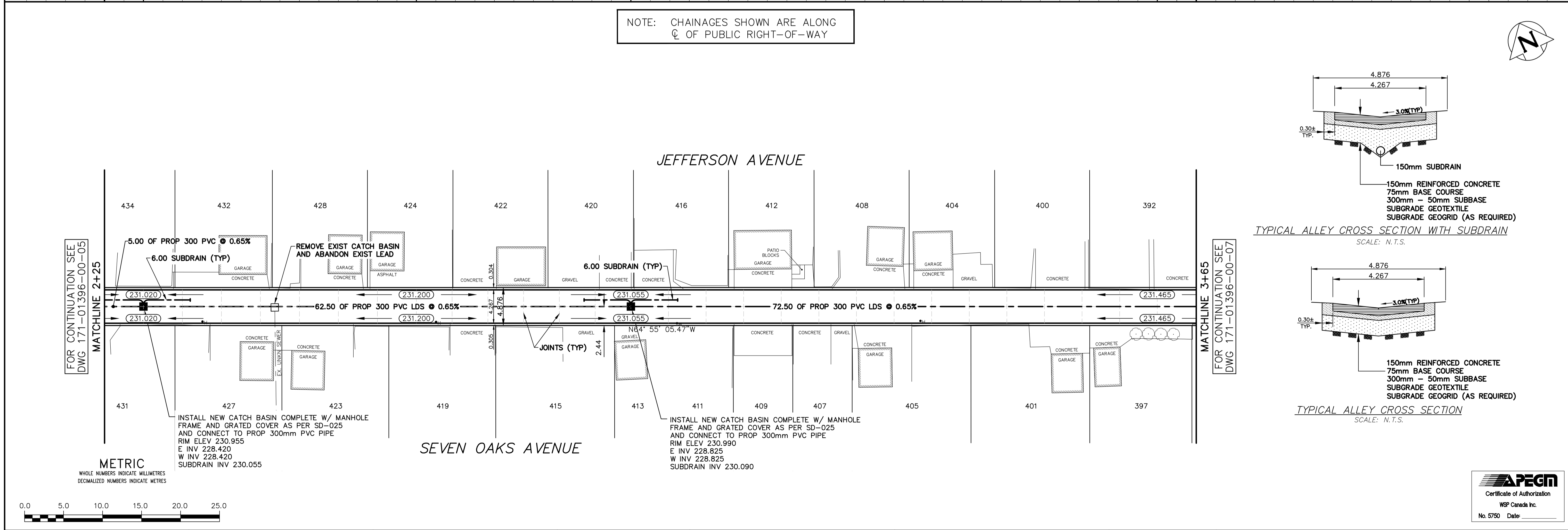


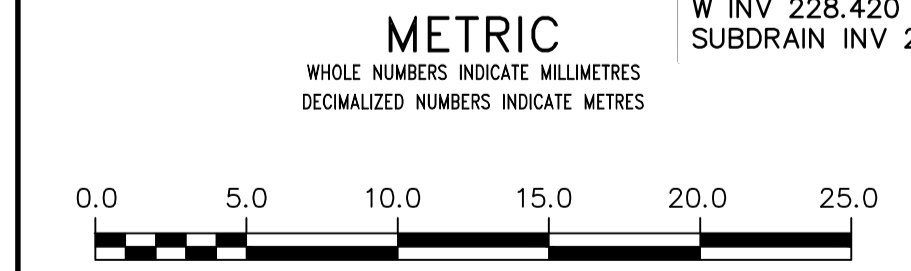
- NOTES:**
- ISOLATE EXISTING HYDRO POLES AS DIRECTED BY CONTRACT ADMINISTRATOR
 - RENEW EXISTING APPROACHES AND SIDEWALK AS DIRECTED BY CONTRACT ADMINISTRATOR
 - ADDITIONAL EXCAVATION AND INSTALLATION OF SUBGRADE GEOGRID TO BE DETERMINED BY CONTRACT ADMINISTRATOR
 - ADJUSTMENTS TO PROPOSED CROSSFALL, WHERE REQUIRED, ARE TO BE DETERMINED BY CONTRACT ADMINISTRATOR TO SUIT EXISTING DRIVEWAYS, APPROACHES, ETC.
 - LIGHT STANDARDS, HYDROPOLES, AND ANCHORS MAY REQUIRE SUPPORT AND/OR REMOVAL AND REPLACEMENT AT CONTRACTORS EXPENSE

NOTE: CHAINAGES SHOWN ARE ALONG ϕ OF PUBLIC RIGHT-OF-WAY



TYPICAL ALLEY CROSS SECTION WITH SUBDRAIN
SCALE: N.T.S.

TYPICAL ALLEY CROSS SECTION
SCALE: N.T.S.



WATERMAIN	HYDRANT	VALVE	CURB STOP	LAND DRAINAGE SEWER	WASTE WATER SEWER	CB LEAD	MANHOLE	CATCH BASIN	CURB INLET	HYDRO
GAS	M.T.S.	TRAFFIC SIGNALS	CONCRETE/ASPHALT	SIDEWALK	CURB RAMP	ELEVATIONS	PROPERTY LINE	SURVEY BAR		
150 WM	150 WM	300 LDS	250 WWS	300 LDS	250 WWS					
WATERMAIN	VALVE	LAND DRAINAGE SEWER	WASTE WATER SEWER	CENTERLINE	SOUTH & EAST GUTTER	NORTH & WEST GUTTER	S & E GARAGE PAD	N & W GARAGE PAD		
LEGEND - PLAN	PROPOSED	EXISTING	LEGEND - PLAN	PROPOSED	EXISTING	LEGEND - PROFILE	PROPOSED	EXISTING	LEGEND - PROFILE	PROPOSED

LOCATION APPROVED UNDERGROUND STRUCTURES

SUPV. U/G STRUCTURES DATE COMMITTEE

NOTE:
LOCATION OF UNDERGROUND STRUCTURES AS SHOWN ARE BASED ON THE BEST INFORMATION AVAILABLE BUT NO GUARANTEE IS GIVEN THAT ALL EXISTING UTILITIES ARE SHOWN OR THAT THE GIVEN LOCATIONS ARE EXACT. CONFIRMATION OF EXISTENCE AND EXACT LOCATION OF ALL SERVICES MUST BE OBTAINED FROM THE INDIVIDUAL UTILITIES BEFORE PROCEEDING WITH CONSTRUCTION.

B.M. ELEV.					
DESIGNED BY	A.B.	CHECKED BY	R.H.		
DRAWN BY	A.B.	APPROVED BY	S.M.		
HOR. SCALE:	1:250	RELEASED FOR CONSTRUCTION			
VERT. SCALE:	1:25				
1	PROPOSED LDS ALIGNMENT	17/03/27	A.B.		

111-93 Lombard Avenue
Winnipeg, Manitoba
R3B 3B1 Canada
Phone: 204-943-3178
Fax: 204-943-4948
wsp.com

THE CITY OF WINNIPEG
PUBLIC WORKS DEPARTMENT

2017 ALLEY RENEWALS - CONTRACT 1
JEFFERSON AVENUE/SEVEN OAKS AVENUE ALLEY

FROM MATCHLINE AT 2+25 TO MATCHLINE AT 3+60
CONCRETE PAVEMENT

CITY DRAWING NO. SHEET 2 OF 3
BID OPPORTUNITY 379-2017