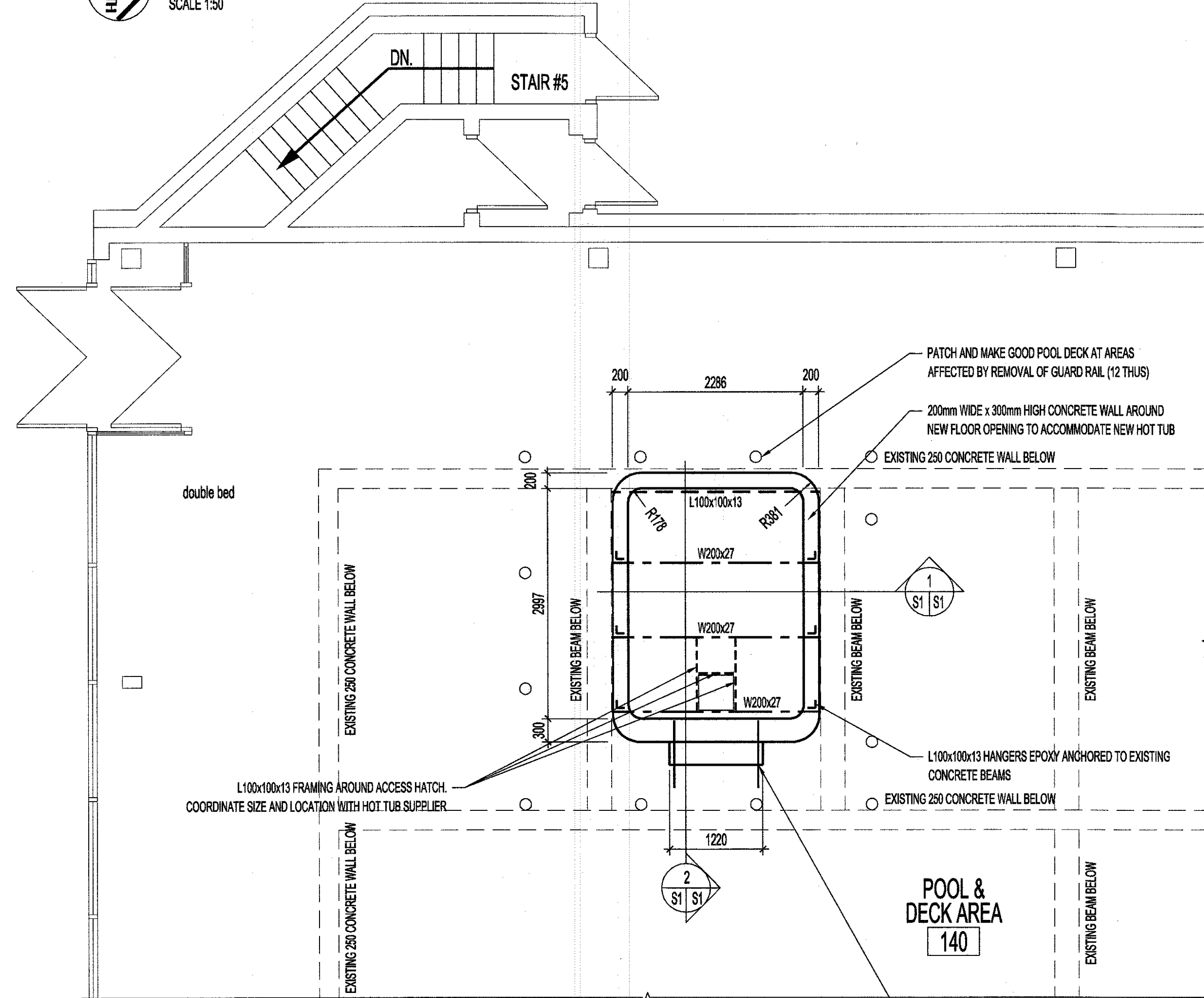
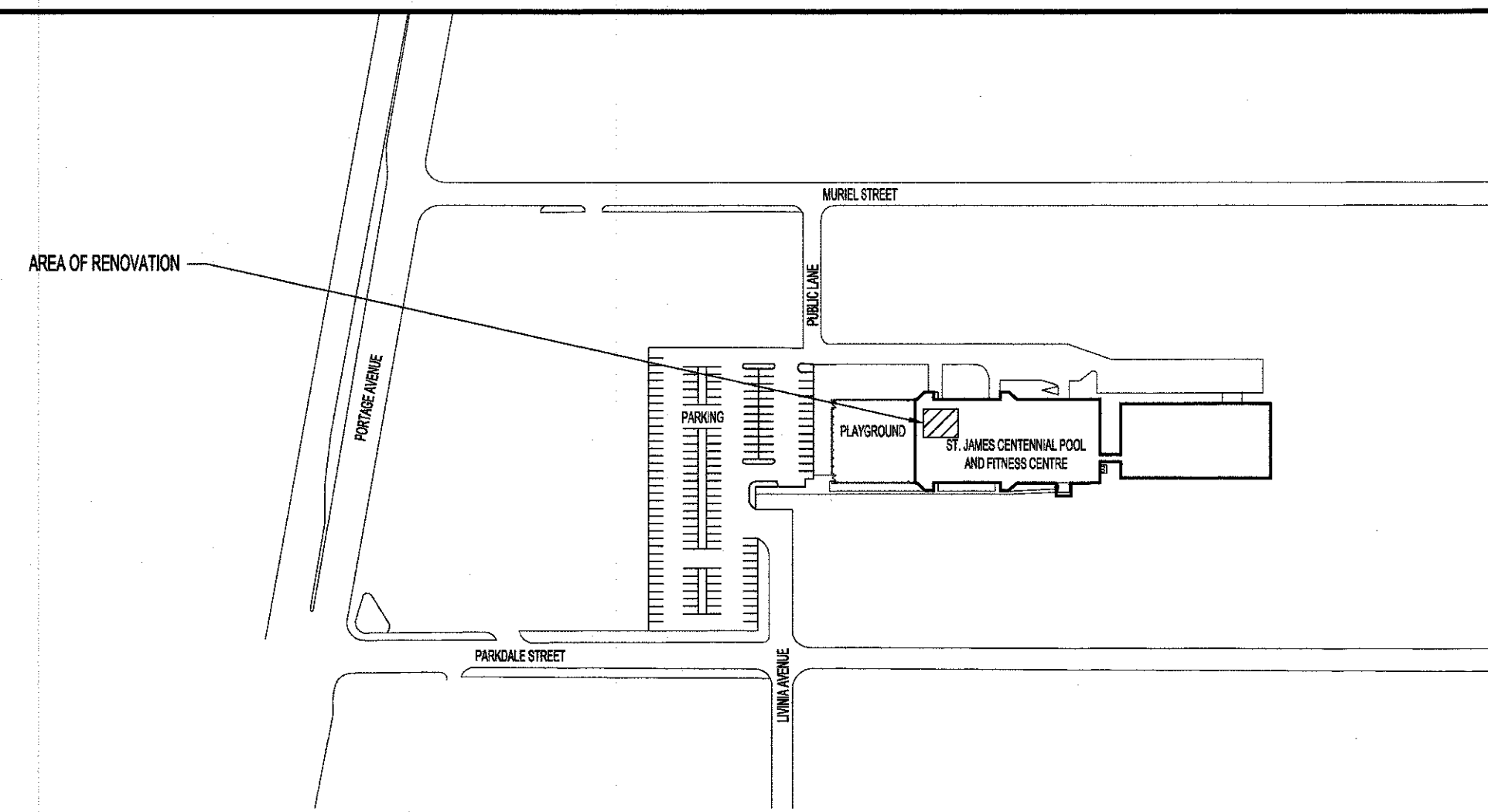


**PARTIAL MAIN FLOOR PLAN - DEMOLITION**  
SCALE 1:50



**PARTIAL MAIN FLOOR PLAN - RENOVATION**  
SCALE 1:50



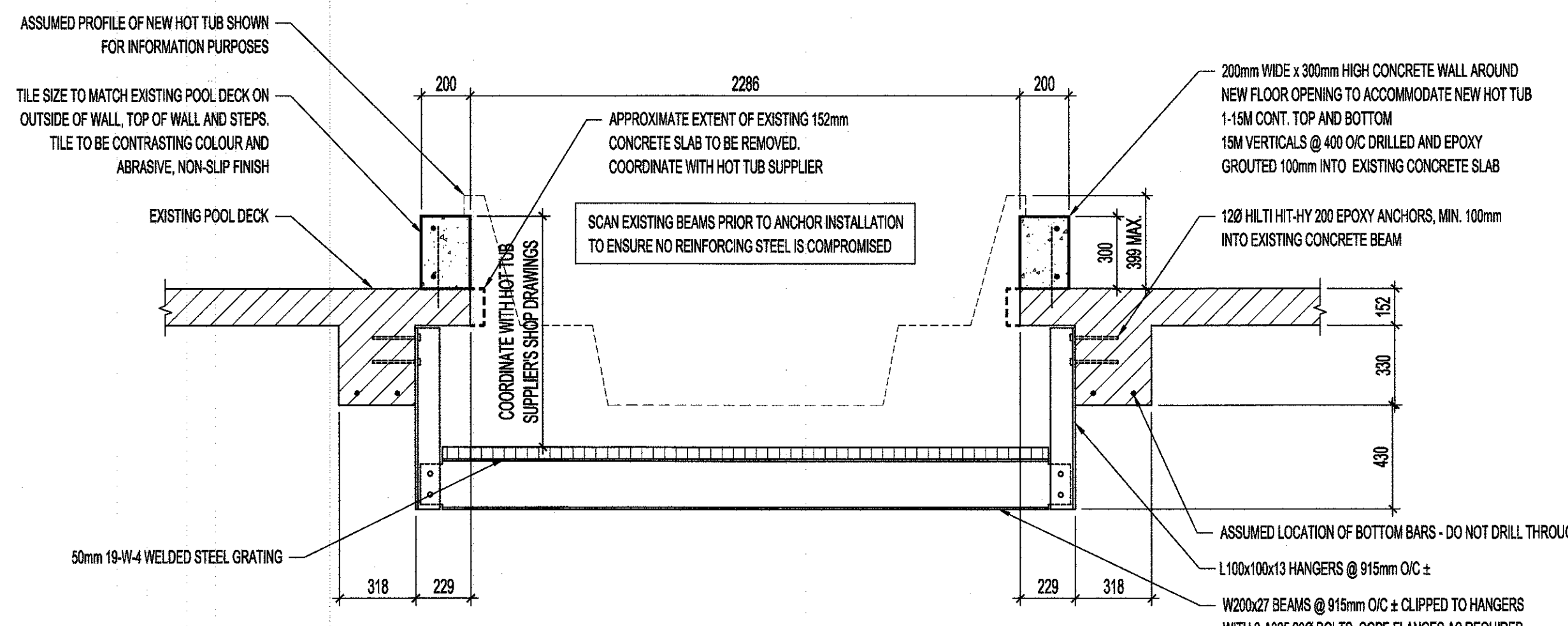
**KEY PLAN**  
SCALE: N.T.S.

**CONCRETE**

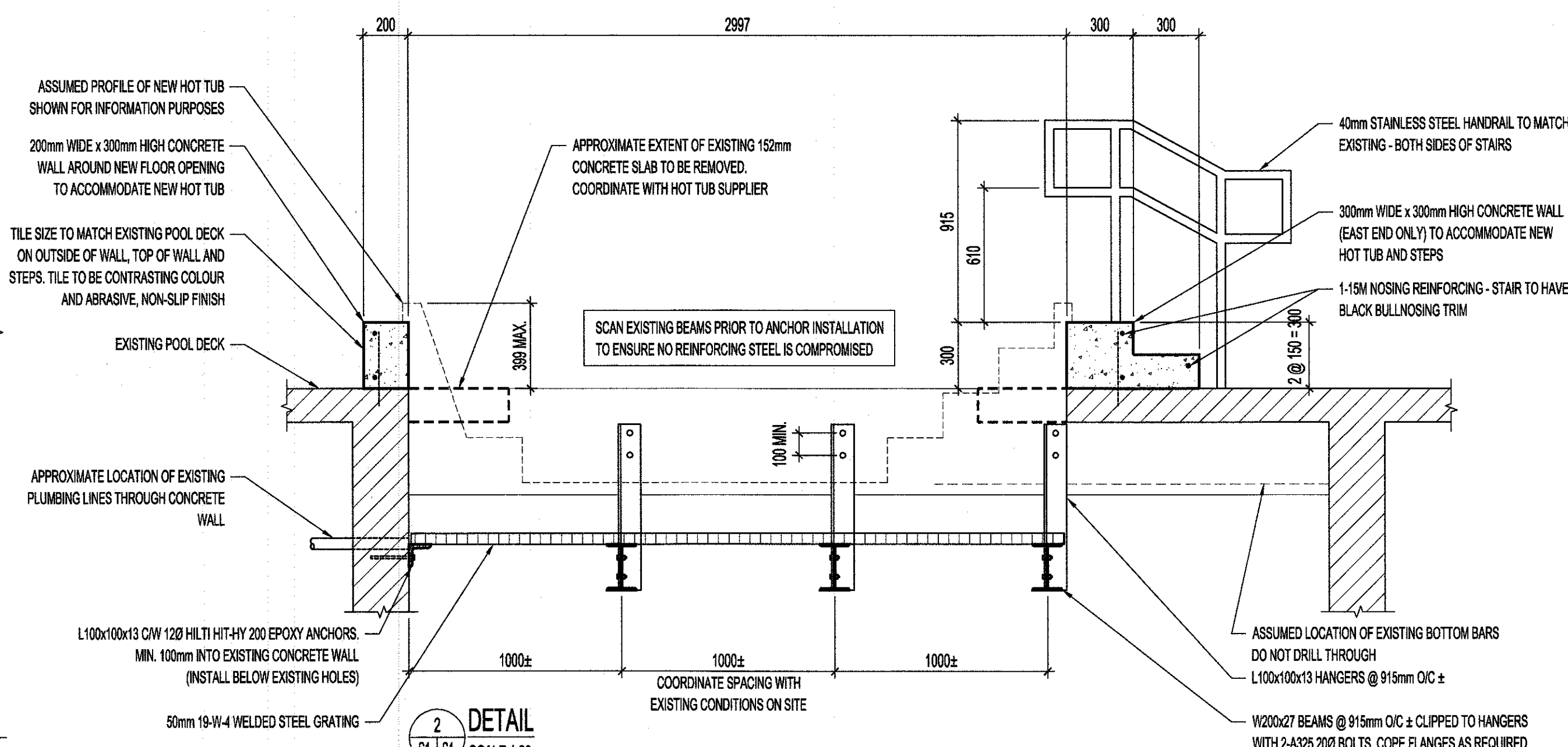
1. CONCRETE WORK SHALL BE IN ACCORDANCE WITH CSA A23.1-09 FOR "CONCRETE MATERIALS AND METHODS OF CONCRETE CONSTRUCTION".
2. CONCRETE TO BE 30MPa @ 28 DAYS, EXPOSURE CLASS C-4, MAX 20mm AGGREGATE.

**REINFORCING**

1. ALL BARS TO CONFORM TO CSA G30.18-M02:  
15M BARS AND LARGER TO BE GRADE 400  
10M BARS AND SUPPORTING RODS TO BE GRADE 300 OR BETTER



**1 DETAIL**  
SCALE 1:20



**2 DETAIL**  
SCALE 1:20

**NOTES:**  
THESE DRAWINGS SHALL NOT BE SCALED.  
THE CONTRACTOR SHALL VISIT THE SITE AND SATISFY ONESELF ALL DIMENSIONS, DATUM, AND DETAILED INFORMATION SHOWN ARE CORRECT.  
ALL OPENINGS THROUGH FIRE ASSEMBLIES ARE TO BE FIRE STOPPED AND SEALED WITH ULC APPROVED FIRE STOPPING TO MAINTAIN THE INTEGRITY OF THE FIRE SEPARATION, AND PROVIDE A SMOKE-TIGHT BARRIER.  
ALL PRODUCTS AND MATERIALS TO BE USED AND INSTALLED SHALL CONFORM WITH MANUFACTURER'S SPECIFICATIONS & APPLICABLE CODES.

No.	REVISION/DESCRIPTION	BY	DATE
0	ISSUED FOR CONSTRUCTION	JAW	MAY 3 2017

SEAL

DRAWN	CHECKED	DESIGNED	APPROVED
JAW	JAW		

THE CITY OF WINNIPEG  
PLANNING, PROPERTY AND  
DEVELOPMENT DEPARTMENT  
MUNICIPAL ACCOMMODATIONS DIVISION  
3-65 GARRY STREET, R3C 4K4

PROJECT  
**ST. JAMES CENTENNIAL POOL  
HOT TUB REPLACEMENT**

644 PARKDALE AVENUE

SHEET TITLE  
**PARTIAL MAIN FLOOR PLAN**

SCALE	PROJECT No:	SHEET No:
AS SHOWN	2017-031	S1