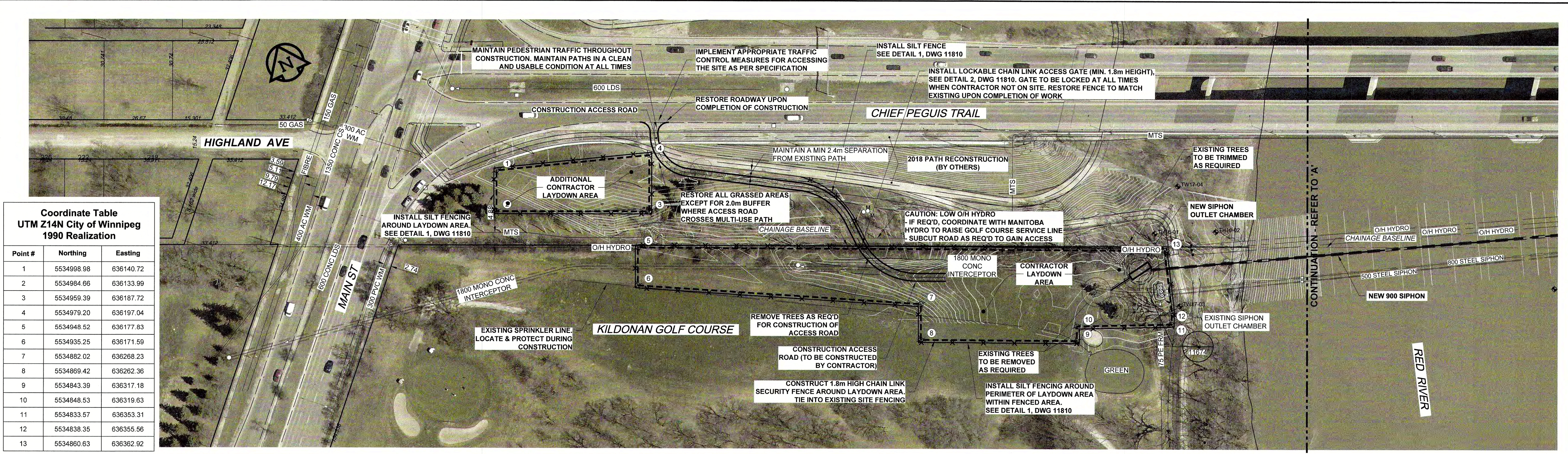


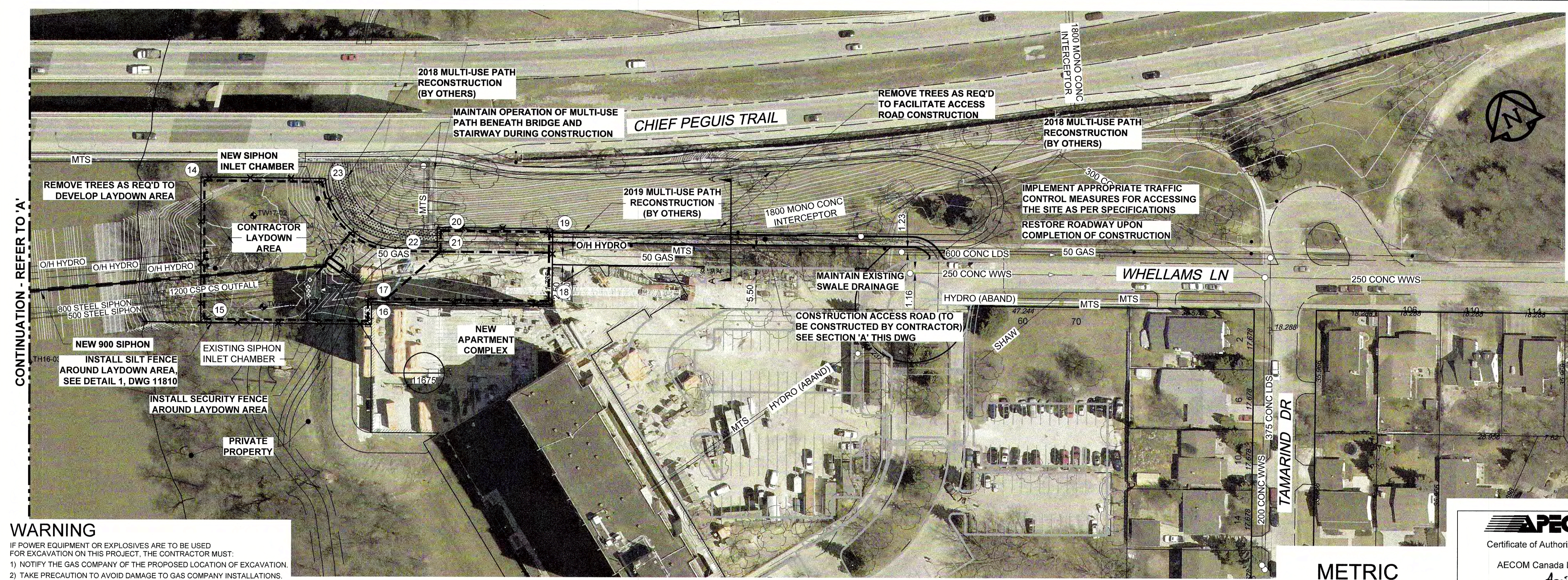
D SIZE 22" x 34" (559mm x 864mm)



**Coordinate Table
UTM Z14N City of Winnipeg
1990 Realization**

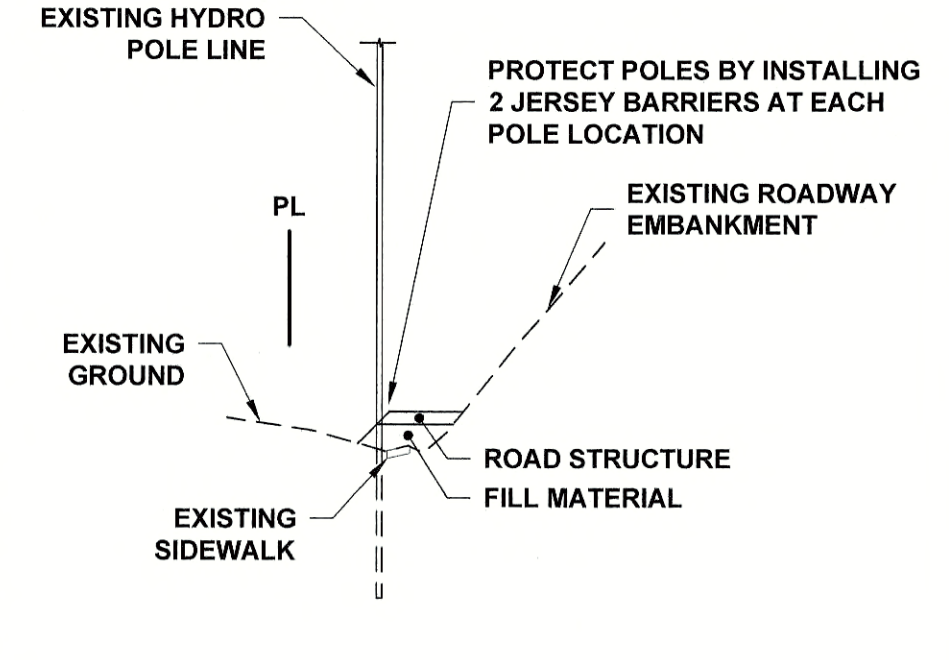
Point #	Northing	Easting
1	5534998.98	636140.72
2	5534984.66	636133.99
3	5534959.39	636187.72
4	5534979.20	636197.04
5	5534948.52	636177.83
6	5534935.25	636171.59
7	5534882.02	636268.23
8	5534869.42	636262.36
9	5534843.39	636317.18
10	5534848.53	636319.63
11	5534833.57	636353.31
12	5534838.35	636355.56
13	5534860.63	636362.92

PLOT: 4/24/2018 11:57:55 AM



**Coordinate Table
UTM Z14N City of Winnipeg
1990 Realization**

Point #	Northing	Easting
14	5534809.33	636563.35
15	5534772.58	636546.07
16	5534751.66	636589.39
17	5534757.55	636592.23
18	5534734.49	636639.97
19	5534752.67	636648.72
20	5534766.54	636620.03
21	5534761.01	636617.39
22	5534766.51	636605.93
23	5534794.25	636594.50



A EAST SIDE - ACCESS ROAD
TYPICAL DETAIL Scale: 1:500

WARNING
IF POWER EQUIPMENT OR EXPLOSIVES ARE TO BE USED FOR EXCAVATION ON THIS PROJECT, THE CONTRACTOR MUST:
1) NOTIFY THE GAS COMPANY OF THE PROPOSED LOCATION OF EXCAVATION.
2) TAKE PRECAUTION TO AVOID DAMAGE TO GAS COMPANY INSTALLATIONS.
SEE PROVINCIAL REGULATION 140/92 FOR DETAILS

EXISTING	LEGEND - PLAN	NEW	EXISTING	LEGEND - PLAN	NEW	EXISTING	LEGEND - PROFILE	NEW
150 WM	WATERMAIN	150 WM	+	CURB STOP	+	150 WM	WATERMAIN	+
+	HYDRANT	+	+	REDUCER	+	+	HYDRANT	+
+	VALVE	+	+	COUPLING	+	+	VALVE	+
300 LDS	LAND DRAINAGE SEWER	300 LDS	X	ANODE	X	300 LDS	LAND DRAINAGE SEWER	X
250 WWS	WASTE WATER SEWER	250 WWS	~	HYDRO	~	250 WWS	WASTE WATER SEWER	~
○	MANHOLE	●	MTS	PAVEMENT CROWN	○	○	N/W PROPERTY LINE	○
△	CATCH BASIN	▲	GAS	N/W GUTTER	○	○	S/E PROPERTY LINE	○
□	CURB INLET	■	TESTHOLE	S/E GUTTER	○	○		○
▭	CULVERT	▭	LAMP STANDARD					
≡	PIPE ABANDONMENTS	≡	TREE					
+	SURVEY BAR							

LOCATION APPROVED
UNDERGROUND STRUCTURES

SUPR. U/G STRUCTURES DATE COMMITTEE

NOTE:
LOCATION OF UNDERGROUND STRUCTURES AS SHOWN ARE BASED ON THE BEST INFORMATION AVAILABLE. BUT NO GUARANTEE IS GIVEN THAT ALL EXISTING UTILITIES ARE SHOWN OR THAT THE GIVEN LOCATIONS ARE EXACT. CONFIRMATION OF EXISTENCE AND EXACT LOCATION OF ALL SERVICES MUST BE OBTAINED FROM THE INDIVIDUAL UTILITIES BEFORE PROCEEDING WITH CONSTRUCTION.

NO.	ISSUED FOR CONSTRUCTION	18/04/24	KLC
0	ISSUED FOR CONSTRUCTION	18/04/24	KLC
NO.	REVISIONS	YYMMDD	BY

AECOM

DESIGNED BY: ADB
CHECKED BY: [Signature]
DRAWN BY: ADL/KLC
APPROVED BY: [Signature]
HOR SCALE: 1:750
VERT SCALE: N/A
DATE: APR 24/18

APECM
Certificate of Authorization
AECOM Canada Ltd.
No. 4671 Date: Apr 12/18

THE CITY OF WINNIPEG
WATER AND WASTE DEPARTMENT

NORTHEAST INTERCEPTOR SEWER RIVER CROSSING

SITE PLAN
CONSTRUCTION STAGING

SHEET 01 OF 11
CITY DRAWING NUMBER
11668
REV 0

BID OPPORTUNITY NO. 1136-2017B

AECOM REVIEW DRFT CHK
AECOM FILE NAME: 60509089-SHT-30-0000-C-1001.dwg Saved By: ccooperk1