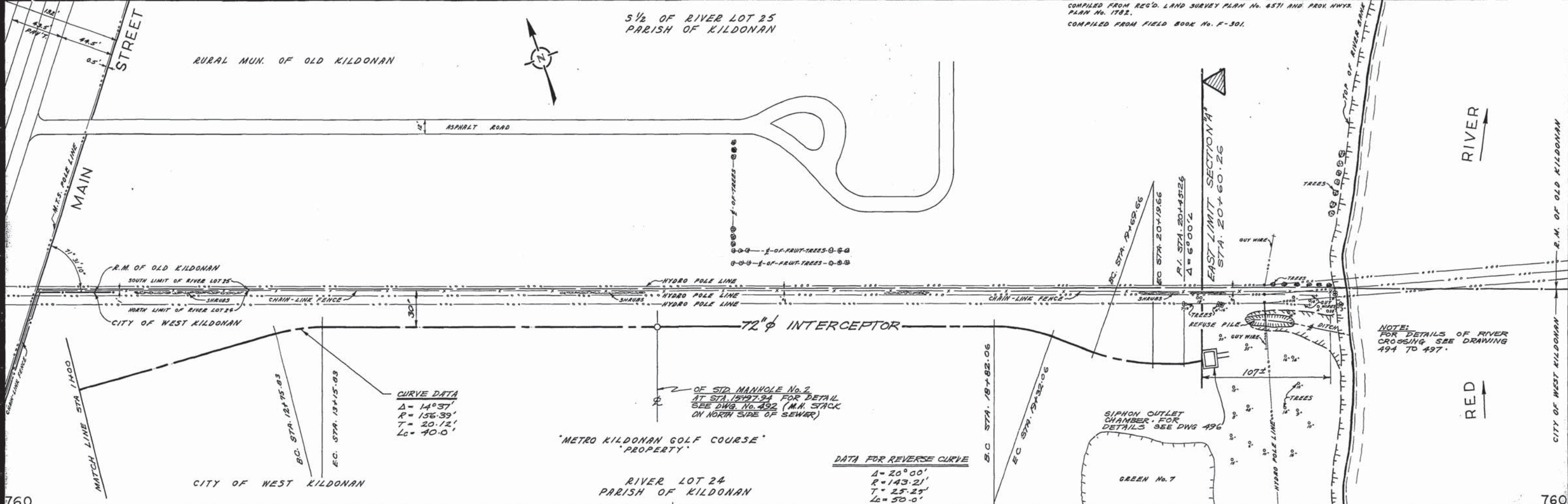


5 1/2 OF RIVER LOT 25
PARISH OF KILDONAN

COMPILED FROM REG'D. LAND SURVEY PLAN No. 4571 AND PROJ. HWS.
PLAN No. 1782.
COMPILED FROM FIELD BOOK No. F-301.

RURAL MUN. OF OLD KILDONAN

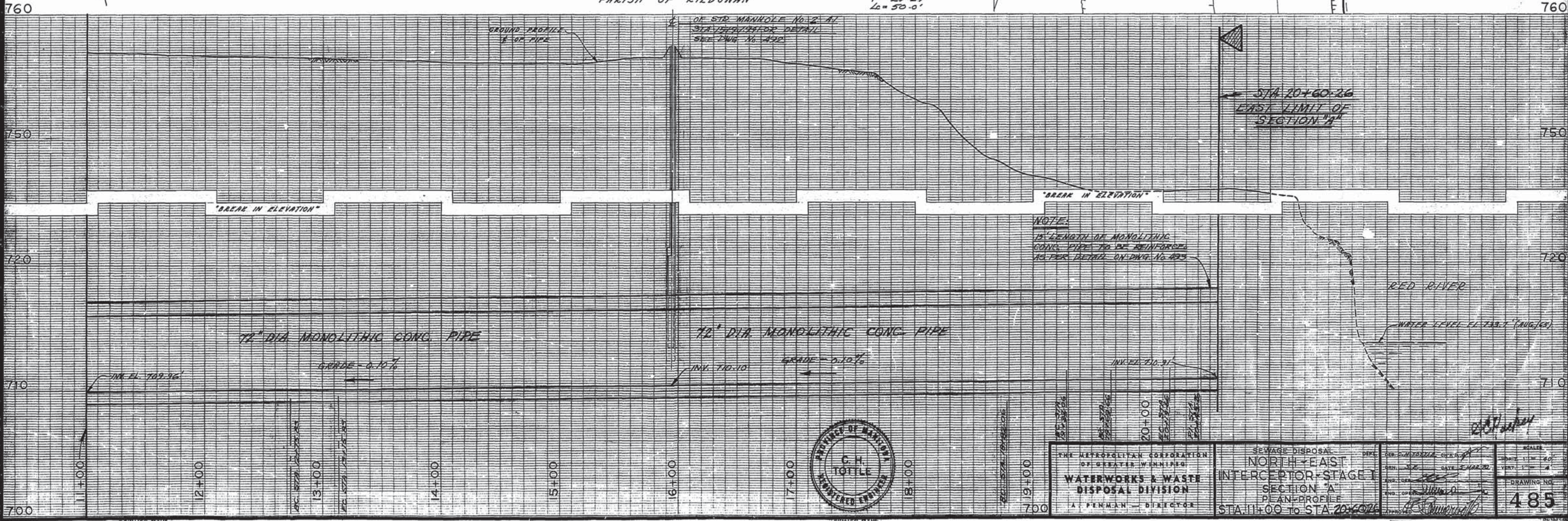


CURVE DATA
 $\Delta = 14^{\circ}37'$
 $R = 156.39'$
 $T = 20.12'$
 $L_c = 40.0'$

OF STD. MANHOLE No. 2
 AT STA. 18+97.94 FOR DETAIL
 SEE DWG. No. 492 (M.H. STACK
 ON NORTH SIDE OF SEWER)

DATA FOR REVERSE CURVE
 $\Delta = 20^{\circ}00'$
 $R = 143.21'$
 $T = 25.25'$
 $L_c = 50.0'$

NOTE:
 FOR DETAILS OF RIVER
 CROSSING SEE DRAWING
 494 TO 497.



NOTE:
 15' LENGTH OF MONOLITHIC
 CONG. PIPE TO BE REINFORCED
 AS PER DETAIL ON DWG. No. 493

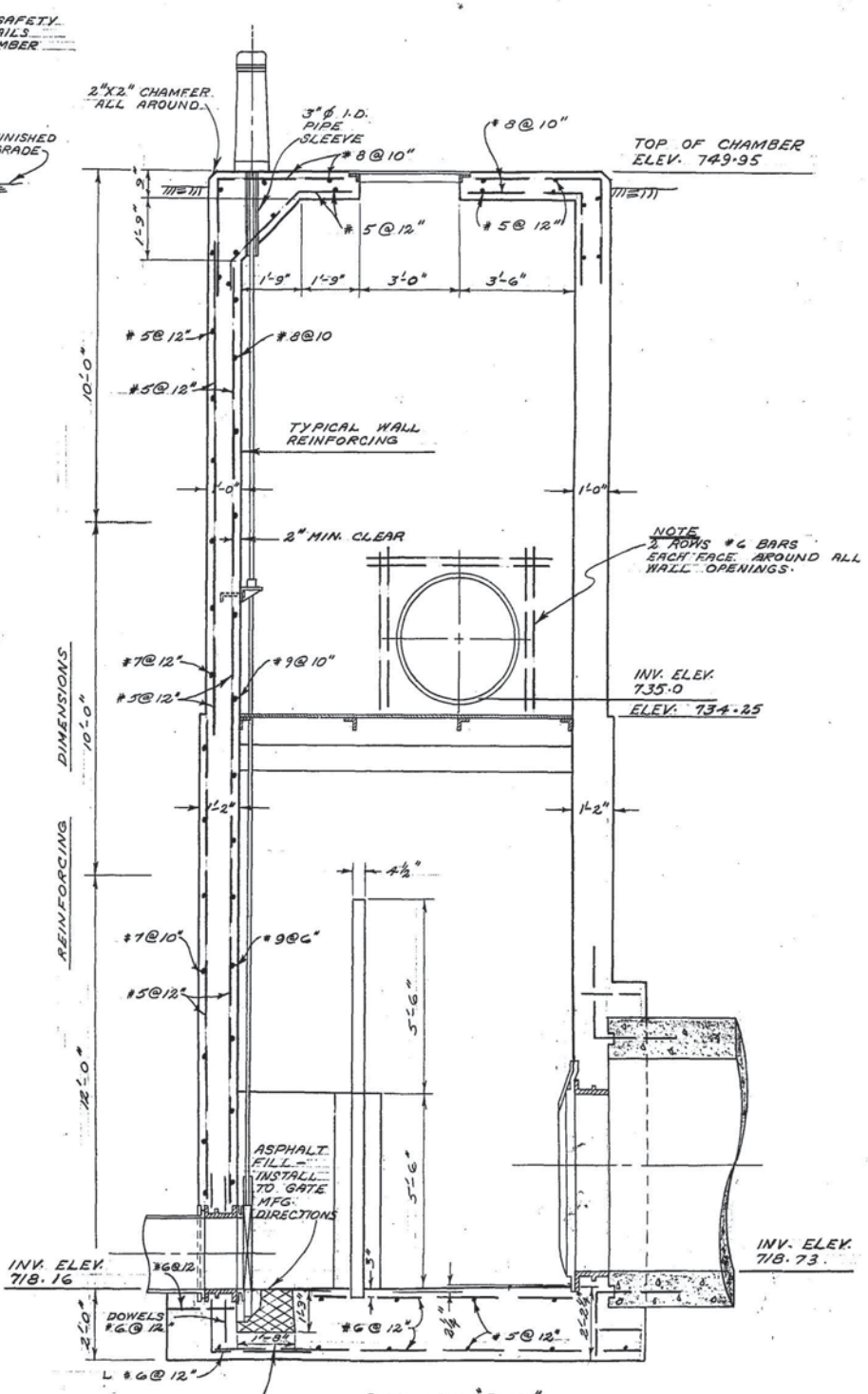
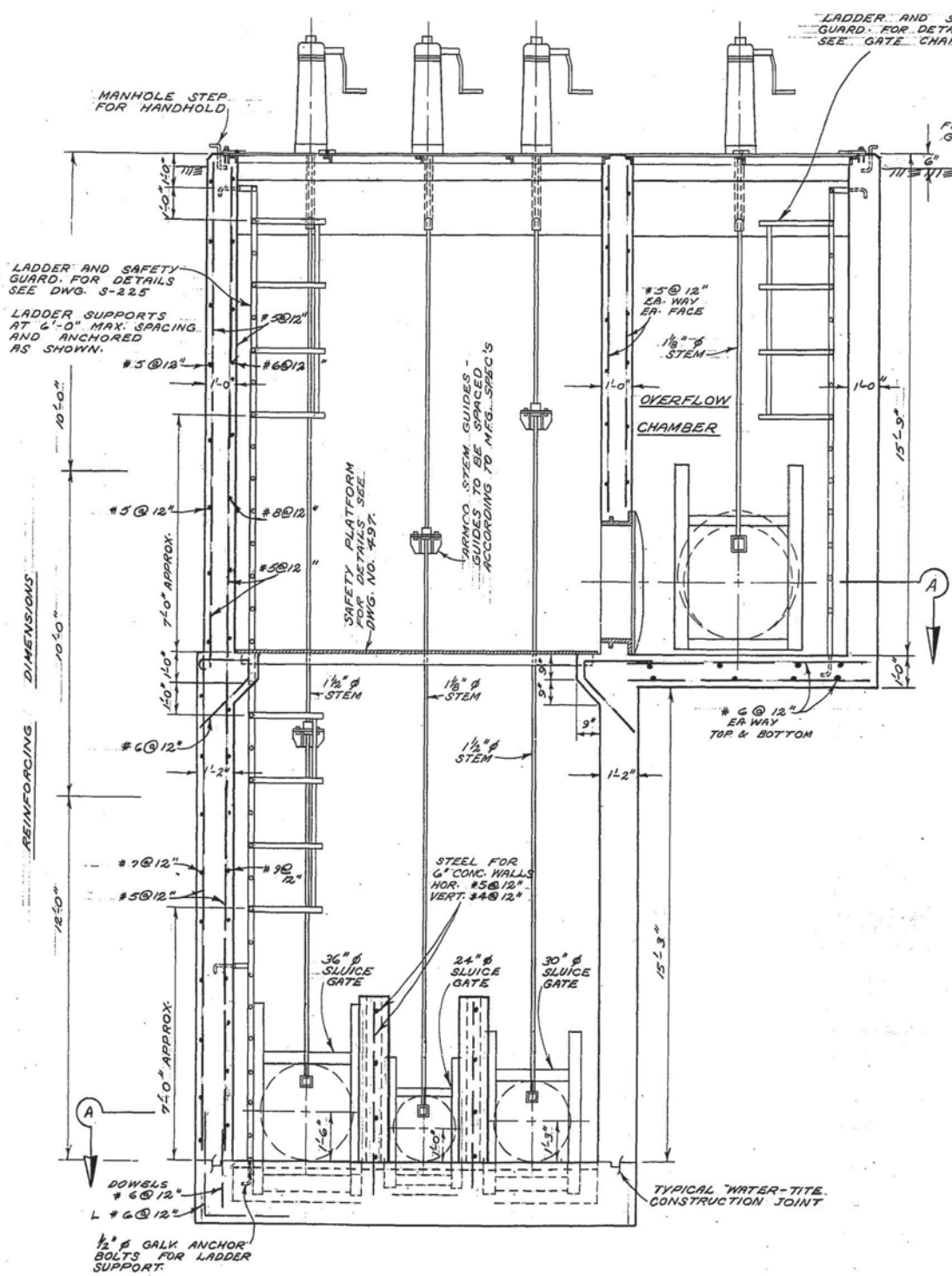
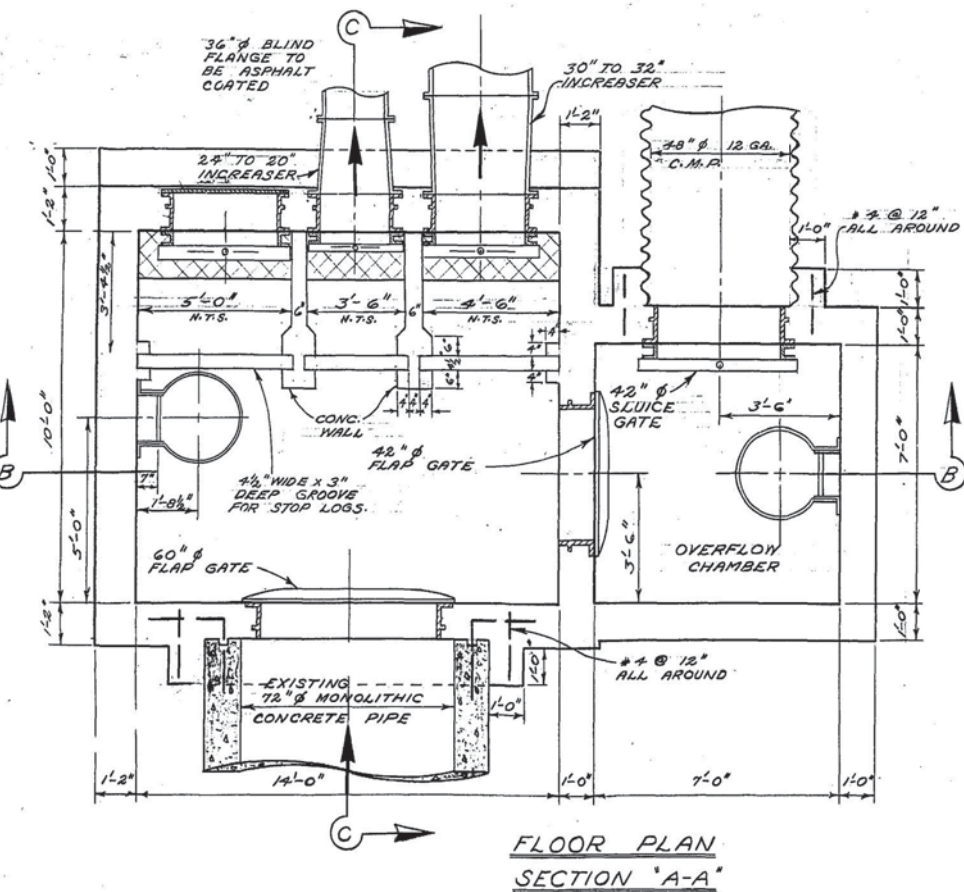
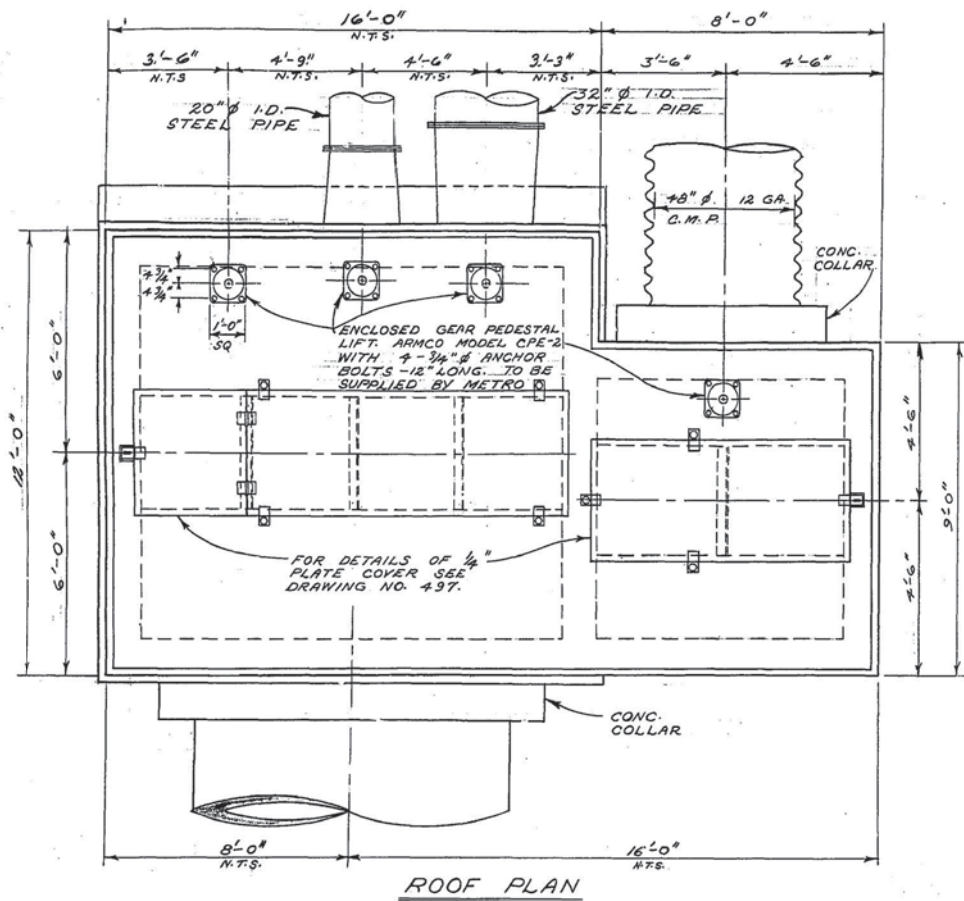


THE METROPOLITAN CORPORATION
 OF GREATER WINNIPEG
**WATERWORKS & WASTE
 DISPOSAL DIVISION**
 A. PENMAN - DIRECTOR

SEWAGE DISPOSAL
**NORTH-EAST
 INTERCEPTOR-STAGE I
 SECTION "A"**
 PLAN-PROFILE
 STA. 11+00 TO STA. 20+60.26

SCALE:
 HORIZ. 1" = 40'
 VERT. 1" = 4'
 DRAWING NO.
485

APPROVED AS BUILT
 BY: **L.D.S.**
 APR 12



- NOTES**
1. 24", 30" & 36" SLUICE GATES TO BE ARMCO MODEL 55-10 FLANGE BACK FLUSH BOTTOM HEAVY DUTY.
 2. 42" SLUICE GATE TO BE MODEL 55-10 FLANGE BACK, STANDARD CLOSURE, MEDIUM DUTY.
 3. 42" & 60" FLAP GATE TO BE ARMCO FLAT BACK HEAVY DUTY.
 4. 24" 30" & 36" WALL THIMBLES TO BE SQUARE FLANGED ROUND OPENING ARMCO TYPE "E".
 5. 42" & 60" WALL THIMBLE TO BE SQUARE FLANGED ROUND OPENING ARMCO TYPE "F".

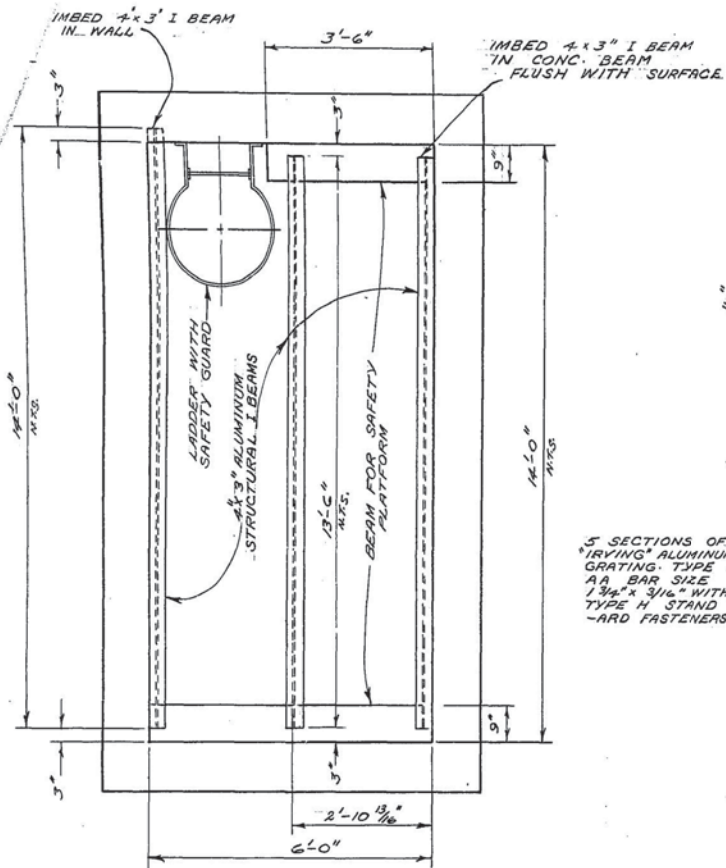
SURVEYED & PLAN CHECKED
BY: [Signature]
APPROVED AS BUILT
BY: [Signature]
DATE: MAR 1972

THE METROPOLITAN CORPORATION
OF GREATER WINNIPEG
**WATERWORKS & WASTE
DISPOSAL DIVISION**
A. PENMAN - DIRECTOR

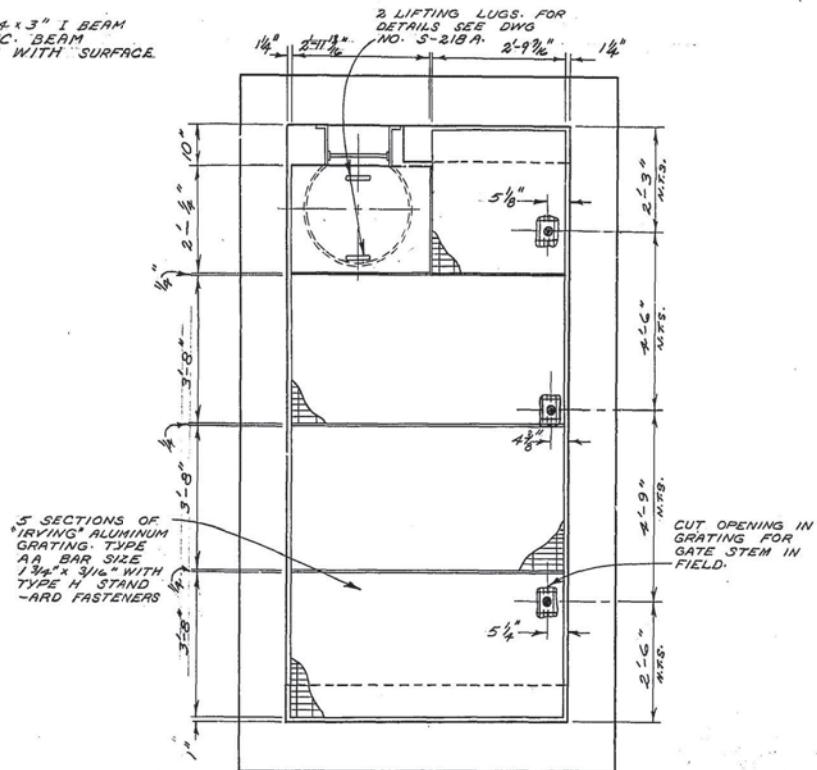
SEWAGE DISPOSAL DEPT.
**NORTH-EAST INTERCEPTOR
RIVER CROSSING
SIPHON INLET CHAMBER**
DRN. V. DUMORE DATE: Aug. 1/70
ENG. DES. [Signature]
ENG. [Signature]

SCALE
3/8" = 1'-0"
DRAWING NO.
495



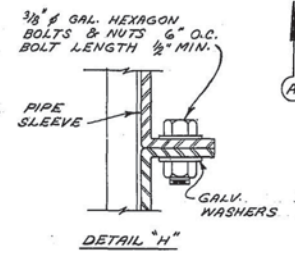


CONCRETE BEAMS AND ANGLE IRON DETAILS

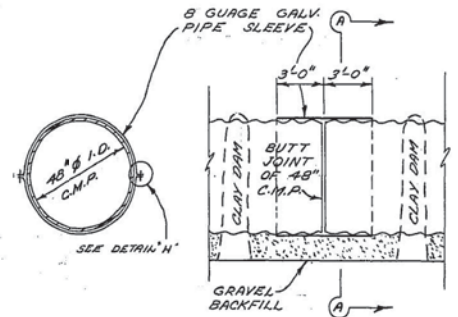


GRATING DETAIL

DETAIL OF SAFETY PLATFORM SIPHON OUTLET CHAMBER



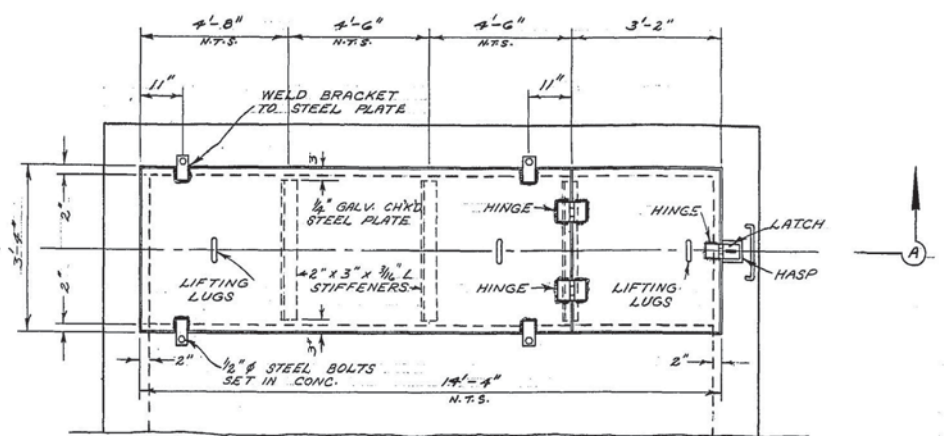
DETAIL "H"



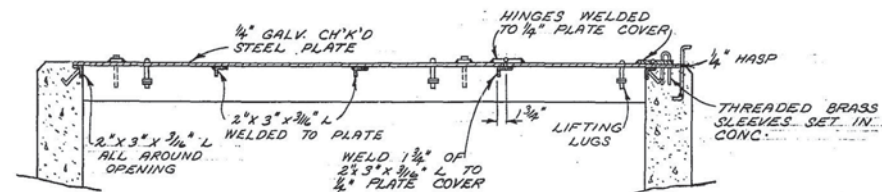
SECTION "A-A"

LONGITUDINAL SECTION

SLIP JOINT DETAIL

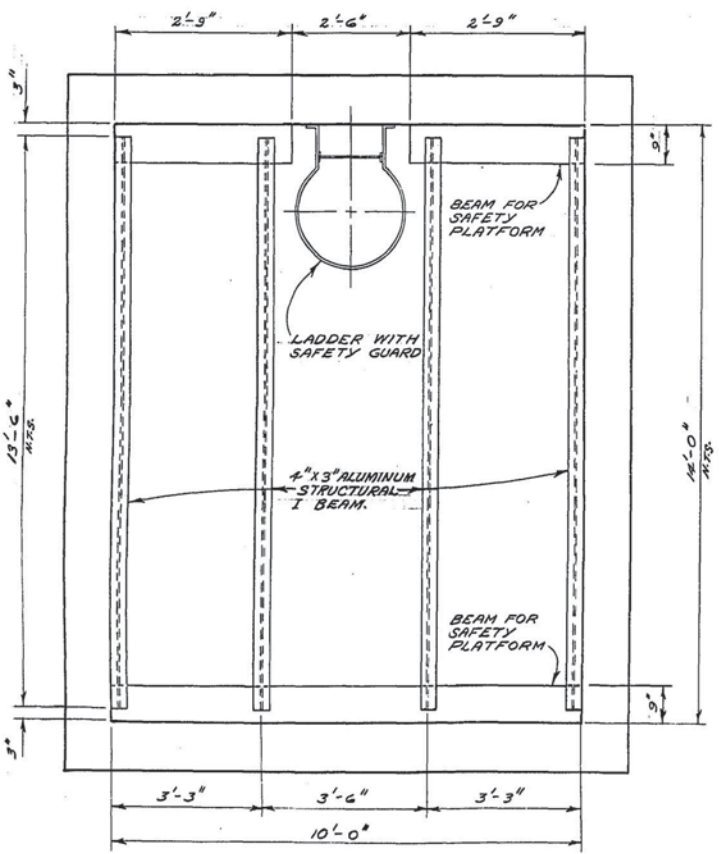


PLAN

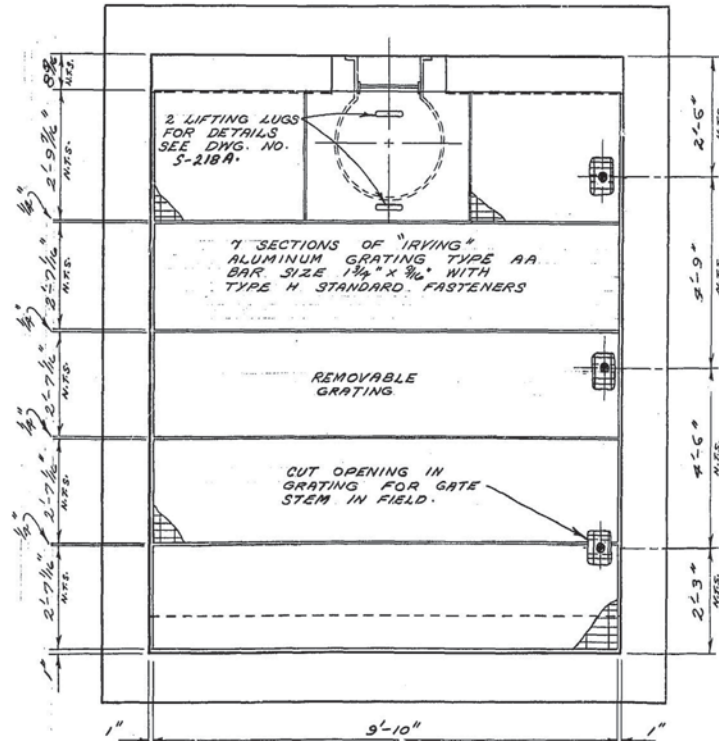


SECTION "A-A"

PLATE COVER FOR INLET AND OUTLET CHAMBERS

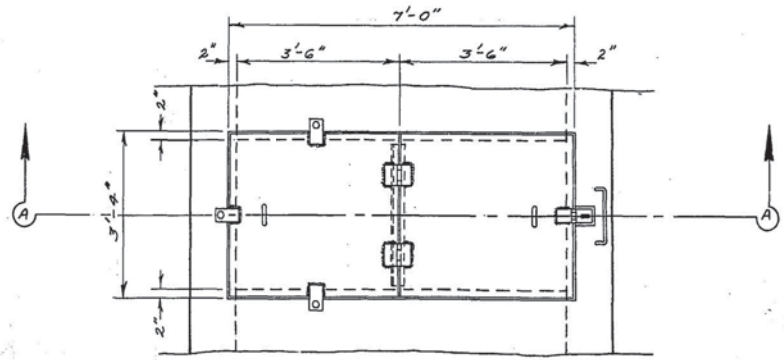


CONCRETE BEAM AND ANGLE IRON DETAIL



GRATING DETAIL

DETAIL OF SAFETY PLATFORM SIPHON INLET CHAMBER



PLAN



SECTION "A-A"

PLATE COVER FOR OVERFLOW CHAMBER



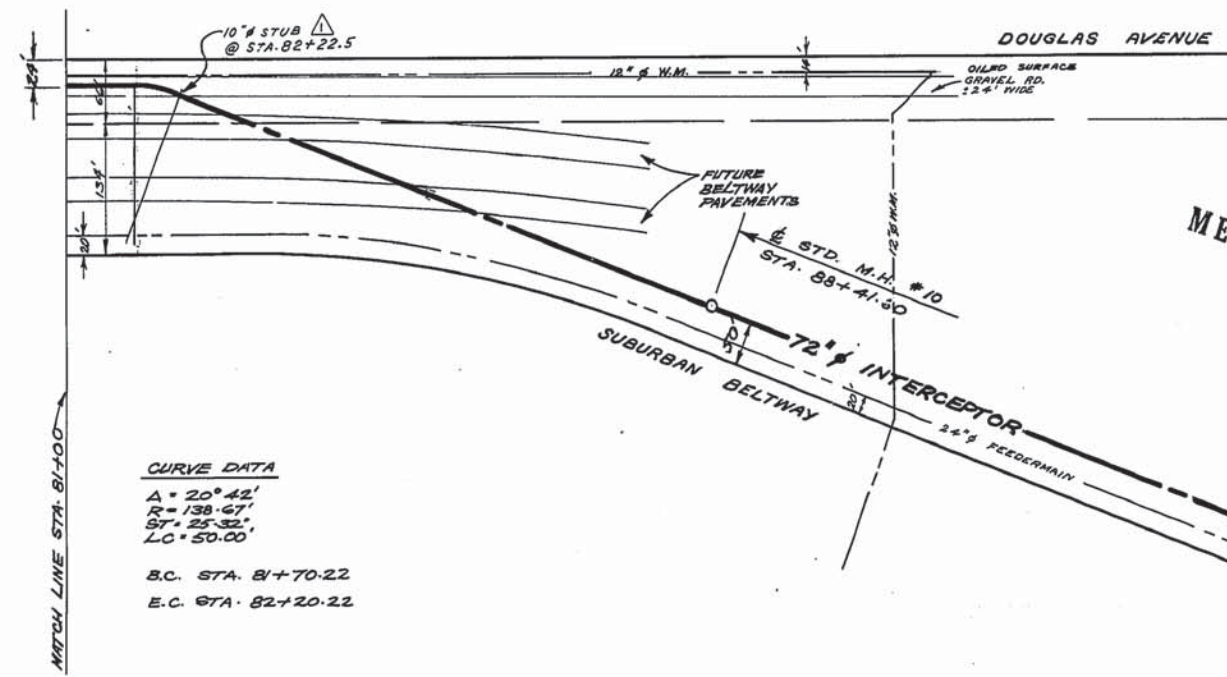
SURVEYED & PLAN CHECKED BY APPROVED AS BUILT BY A.D. O.S. MAR. 1972

THE METROPOLITAN CORPORATION OF GREATER WINNIPEG WATERWORKS & WASTE DISPOSAL DIVISION PENMAN - DIRECTOR

SEWAGE DISPOSAL DEPT. NORTH-EAST INTERCEPTOR RIVER CROSSING MISC. DETAILS

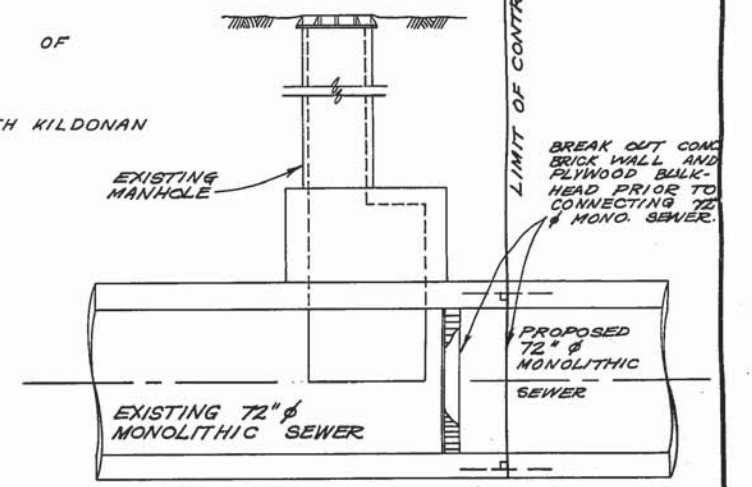
DESIGNED BY CH'K'D. BY DRN. V. DUMORE DATE SEPT. 3/70 ENG. DES. DATE 10/70 ENG. APPROVED BY

SCALE 1/2" = 1'-0" DRAWING NO. 497



CURVE DATA
 A = 20° 42'
 R = 138.67'
 SP = 25.32'
 LC = 50.00'
 B.C. STA. 81+70.22
 E.C. STA. 82+20.22

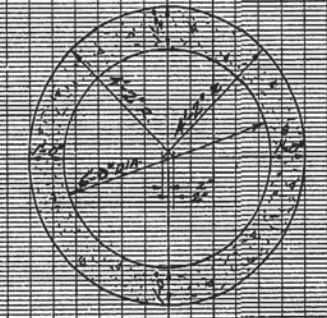
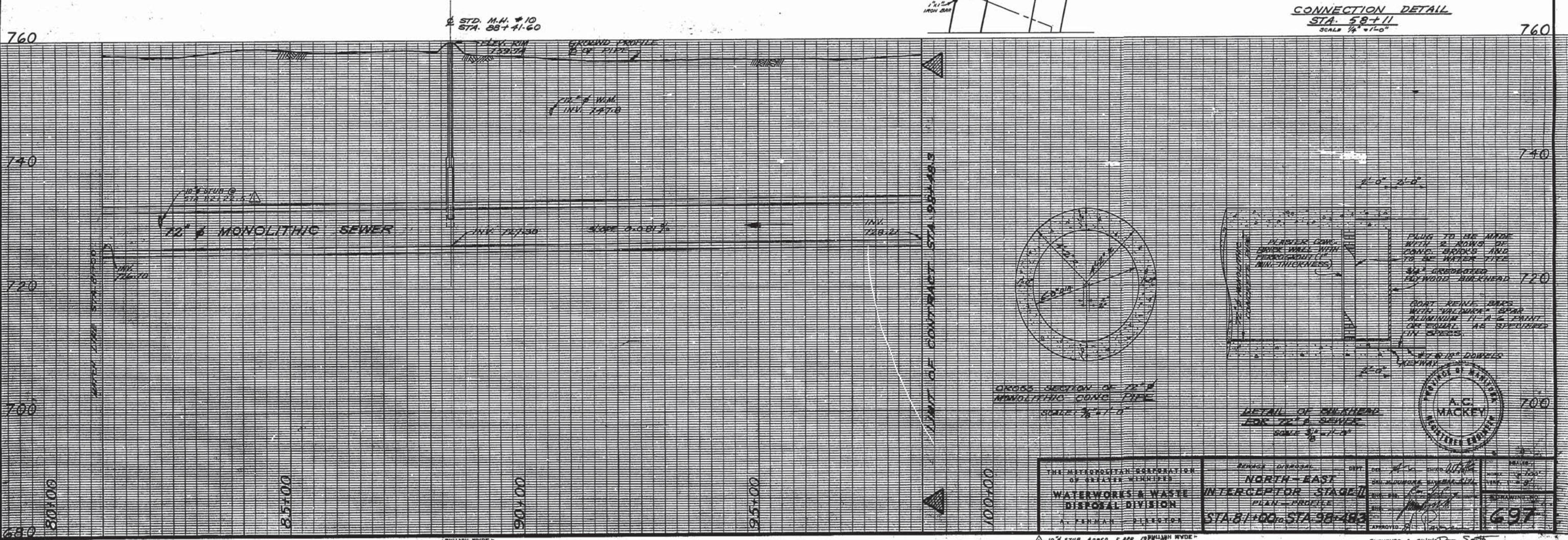
MUNICIPALITY
 OF
 NORTH KILDONAN



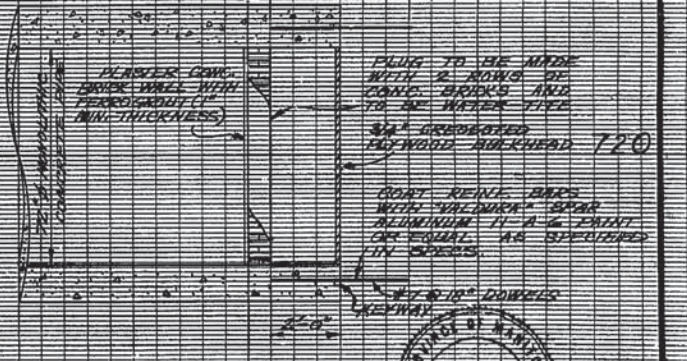
CONNECTION DETAIL
 STA. 58+11
 SCALE 1/8" = 1'-0"

760

760



CROSS SECTION OF 72" MONOLITHIC CONG. PIPE
 SCALE 1/8" = 1'-0"



DETAIL OF BULKHEAD FOR 72" SEWER
 SCALE 1/8" = 1'-0"



THE METROPOLITAN CORPORATION OF GREAT BRITAIN WATERWORKS & WASTE DISPOSAL DIVISION A. PENNAN - DIRECTOR	DESIGNER NORTH-EAST INTERCEPTOR STAGE II PLAN - PROFILE STA. 81+00 TO STA. 95+48.3	DATE 1974	DRAWING NO. 697
	APPROVED 	CHECKED 	SURVEYED & CHECKED 1974