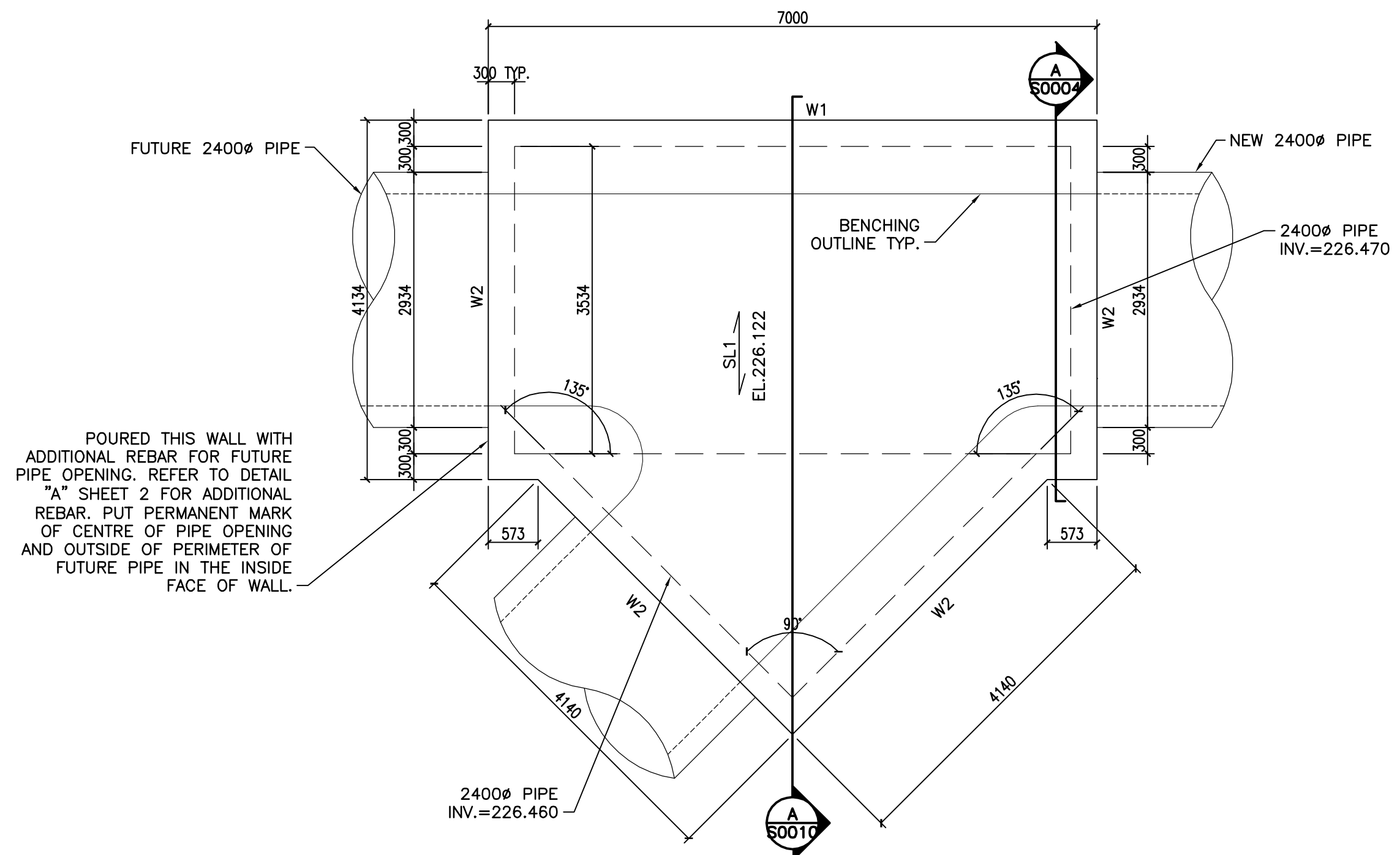


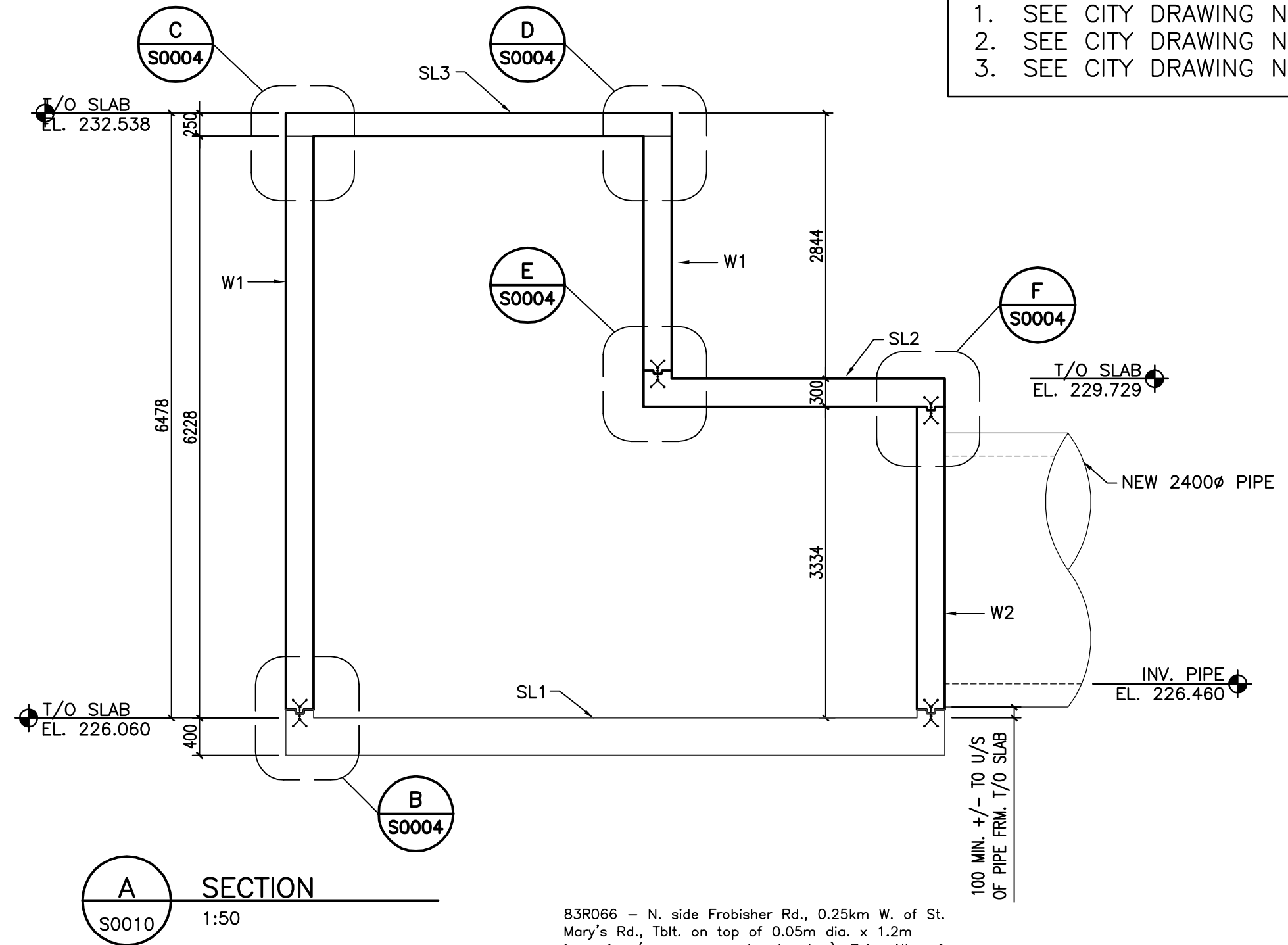
1 TOP SLAB CHAMBER #6
S0010 1:50

DESIGN LOADS:
LIVE = 4.8 kPa



2 BOTTOM SLAB CHAMBER #6
S0010 1:50

DRAWING NOTES:
1. SEE CITY DRAWING NUMBER 1-0102U-S0003-001 FOR GENERAL NOTES.
2. SEE CITY DRAWING NUMBER 1-0102U-S0003-001 FOR WALL, SLAB AND BEAM SCHEDULE.
3. SEE CITY DRAWING NUMBER 1-0102U-S0004-001 FOR CONCRETE SECTIONS & TYPICAL DETAILS.



A SECTION
S0010 1:50

83R066 - N. side Frobiasher Rd., 0.25km W. of St. Mary's Rd., Tblt. on top of 0.05m dia. x 1.2m iron pipe (near conc. gate chamber), 7.1m Nly. of N. side & 9.8m Wly. of W. side of conc. gate chamber 0.25km W. of St. Mary's Rd.



RECORD DRAWING
BY G.L. / M.F. DATE 12.08.27
CHECKED BY B.F.

CONSTRUCTION COMPLETION DATE - APRIL 2011

METRIC
WHOLE NUMBERS INDICATE MILLIMETRES
DECIMALIZED NUMBERS INDICATE METRES

LOCATION APPROVED UNDERGROUND STRUCTURES			
SUPV. U/G STRUCTURES COMMITTEE	DATE		
NOTE: LOCATION OF UNDERGROUND STRUCTURES AS SHOWN ARE BASED ON THE BEST INFORMATION AVAILABLE BUT NO GUARANTEE IS GIVEN THAT THE GIVEN LOCATIONS ARE EXACT. CONFIRMATION OF EXISTENCE AND EXACT LOCATION OF ALL SERVICES MUST BE OBTAINED FROM THE INDIVIDUAL UTILITIES BEFORE PROCEEDING WITH CONSTRUCTION.			

B.M. 81-007 ELEV. 230.438			
NO.	REVISIONS	DATE	BY
02	DWG WAS 1-0102A-S0008-001	12.10.02	SW
1	RECORD DRAWING	12.02.03	G.L.
A	ISSUED FOR TENDER	09.10.13	H.A.K.

Stantec Consulting Ltd.			
905 Waverley Street, Winnipeg, Manitoba Tel 204-489-5900 Fax 204-453-9012			
DESIGNED BY	M.H.	CHECKED BY	T.D.
DRAWN BY	M.F.	APPROVED BY	C.M.
HOR. SCALE:	AS NOTED	RELEASED FOR CONSTRUCTION:	
VERTICAL:		DATE	09-09-21

ENGINEER'S SEAL	
ORIGINAL SEALED BY	B.E. FRASER
	P. ENG
	12/08/28
BID OPPORTUNITY NO.	709-2009

THE CITY OF WINNIPEG WATER AND WASTE DEPARTMENT	
SOUTH END WATER POLLUTION CONTROL CENTRE INSTALLATION OF OUTFALL PIPE EFFLUENT SAMPLING FACILITY AND ASSOCIATED WORKS CHAMBER NO.6 PLAN & SECTION	
CITY DRAWING NUMBER	1-0102U-S0010-001
SHEET	1 OF 1