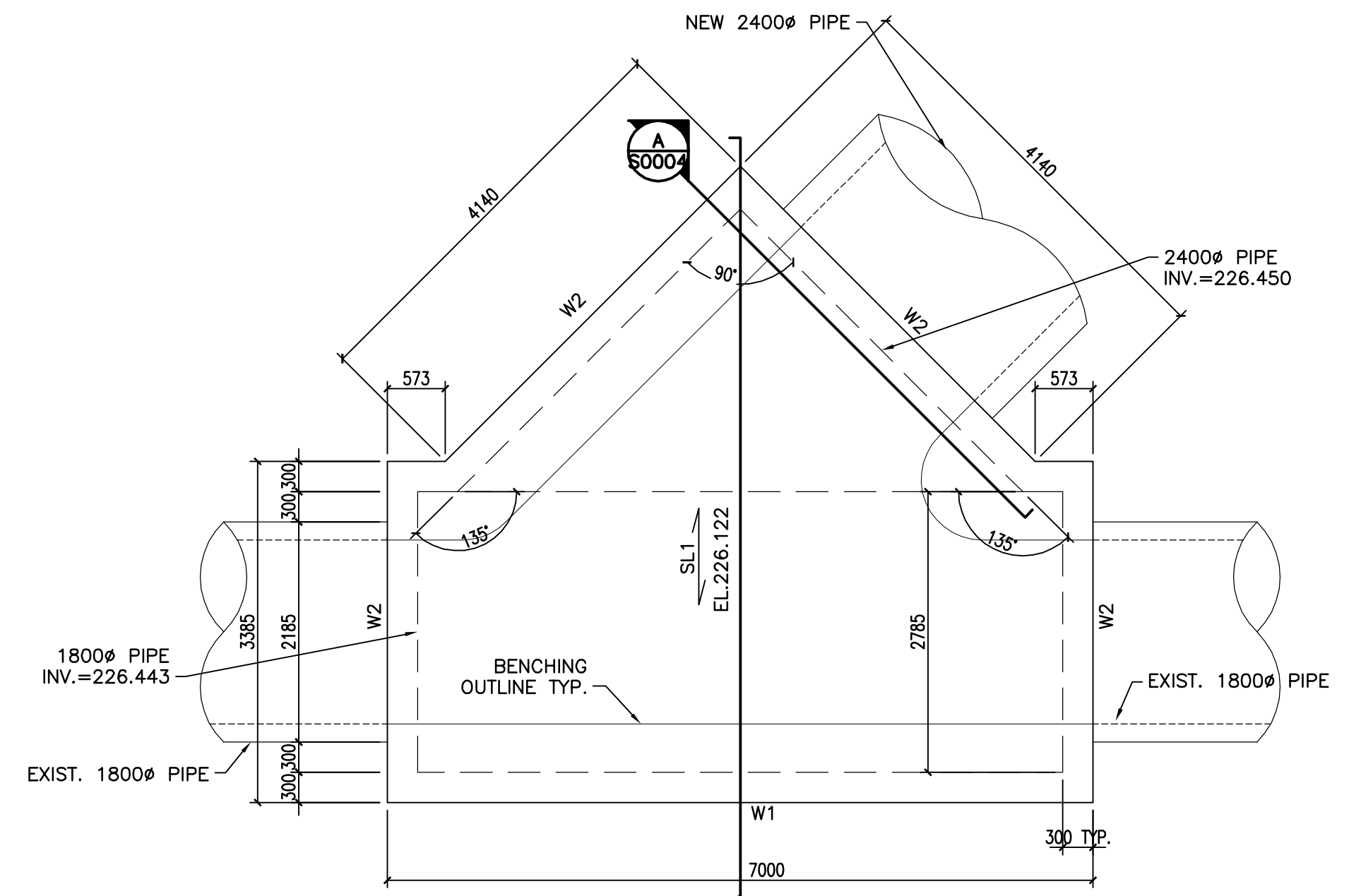


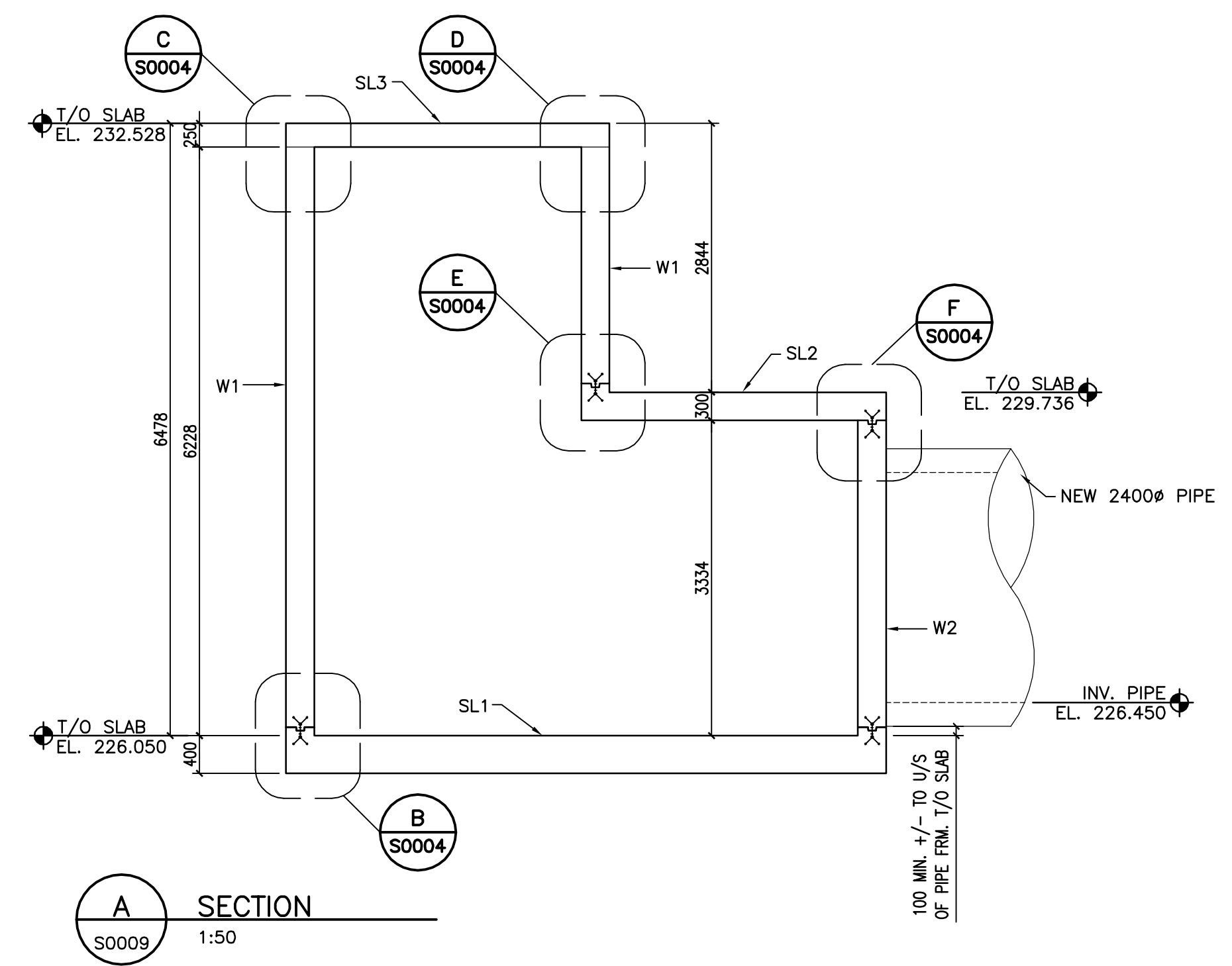
1 TOP SLAB CHAMBER #5
S0009 1:50

DESIGN LOADS:
LIVE = 4.8 kPa



2 BOTTOM SLAB CHAMBER #5
S0009 1:50

DRAWING NOTES:
1. SEE CITY DRAWING NUMBER 1-0102U-S0003-001 FOR GENERAL NOTES.
2. SEE CITY DRAWING NUMBER 1-0102U-S0003-001 FOR WALL, SLAB AND BEAM SCHEDULE.
3. SEE CITY DRAWING NUMBER 1-0102U-S0004-001 FOR CONCRETE SECTIONS & TYPICAL DETAILS.



83R066 - N. side Frohisher Rd., 0.25km W. of St. Mary's Rd., Tbit. on top of 0.05m dia. x 1.2m iron pipe (near conc. gate chamber), 7.1m Nly. of N. side & 9.8m Wly. of W. side of conc. gate chamber 0.25km W. of St. Mary's Rd.

APEGM
Certificate of Authorization
Stantec Consulting Ltd.
No. 1301

RECORD DRAWING
BY G.L. / M.F. DATE 12.08.27
CHECKED BY B.F.

CONSTRUCTION COMPLETION DATE - APRIL 2011

METRIC
WHOLE NUMBERS INDICATE MILLIMETRES
DECIMALIZED NUMBERS INDICATE METRES

LOCATION APPROVED UNDERGROUND STRUCTURES

SUPV. U/G STRUCTURES COMMITTEE	DATE

NOTE:
LOCATION OF UNDERGROUND STRUCTURES AS SHOWN ARE BASED ON THE BEST INFORMATION AVAILABLE BUT NO GUARANTEE IS GIVEN THAT THE GIVEN LOCATIONS ARE EXACT. CONFIRMATION OF EXISTENCE AND EXACT LOCATION OF ALL SERVICES MUST BE OBTAINED FROM THE INDIVIDUAL UTILITIES BEFORE PROCEEDING WITH CONSTRUCTION.

NO.	REVISIONS	DATE	BY	DATE
02	DWG WAS 1-0102A-S0007-001	12.10.02	SW	
1	RECORD DRAWING	12.02.03	G.L.	
A	ISSUED FOR TENDER	09.10.13	H.A.K.	

Stantec Consulting Ltd.
905 Waverley Street, Winnipeg, Manitoba
Tel 204-489-5900 Fax 204-453-9012

DESIGNED BY M.H.	CHECKED BY T.D.
DRAWN BY M.F.	APPROVED BY C.M.
HOR. SCALE: AS NOTED	RELEASED FOR CONSTRUCTION:
VERTICAL:	

DATE 09.09.21

ENGINEER'S SEAL
ORIGINAL SEALED BY
B.E. FRASER
P. ENG
12/08/28

THE CITY OF WINNIPEG
WATER AND WASTE DEPARTMENT

**SOUTH END WATER POLLUTION CONTROL CENTRE
INSTALLATION OF OUTFALL PIPE
EFFLUENT SAMPLING FACILITY AND ASSOCIATED WORKS
CHAMBER NO.5
PLAN & SECTION**

BID OPPORTUNITY NO. 709-2009
CITY DRAWING NUMBER 1-0102U-S0009-001
SHEET 1 OF 1