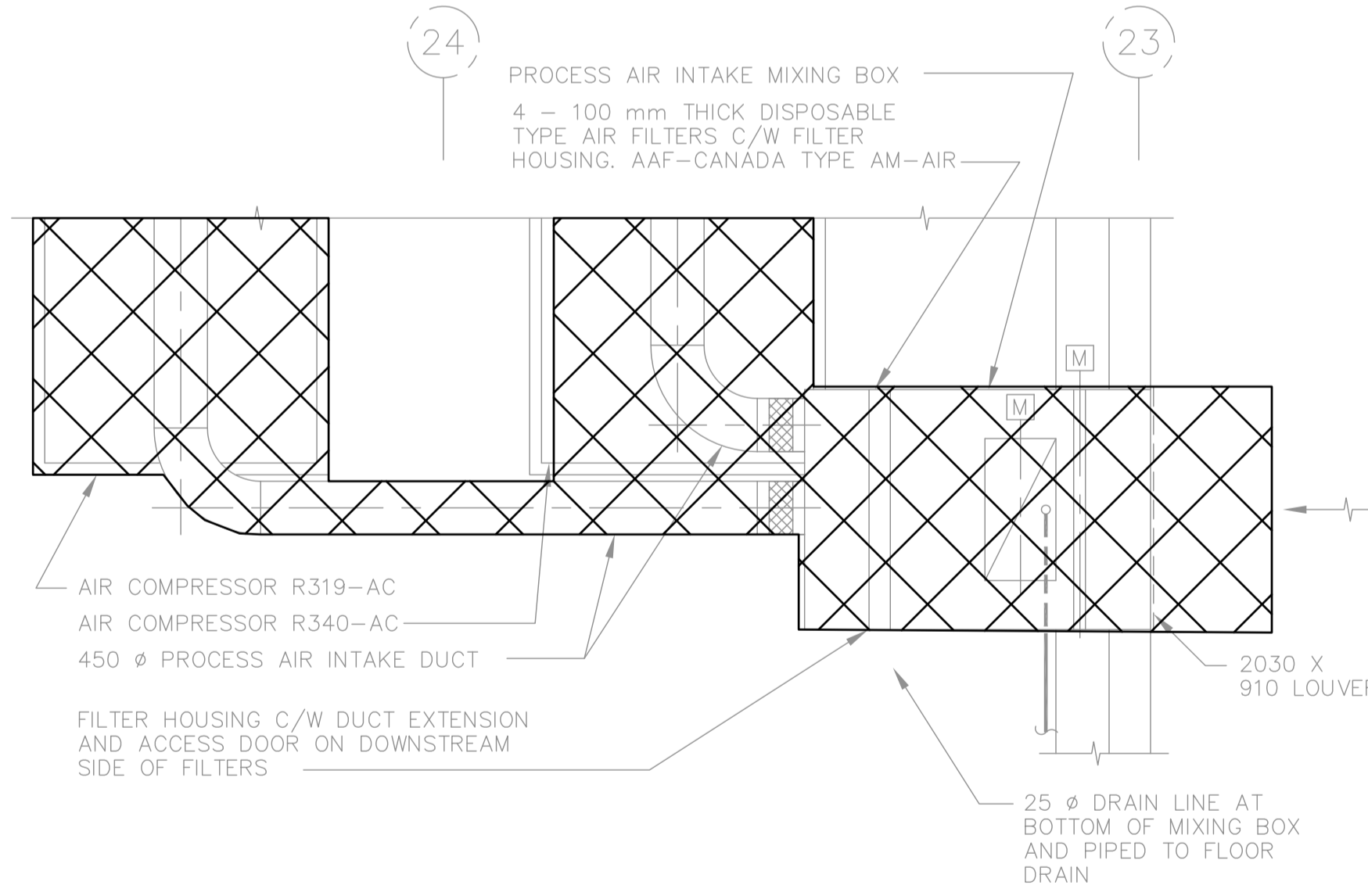


SECTION 1
M206 M207 1 : 50

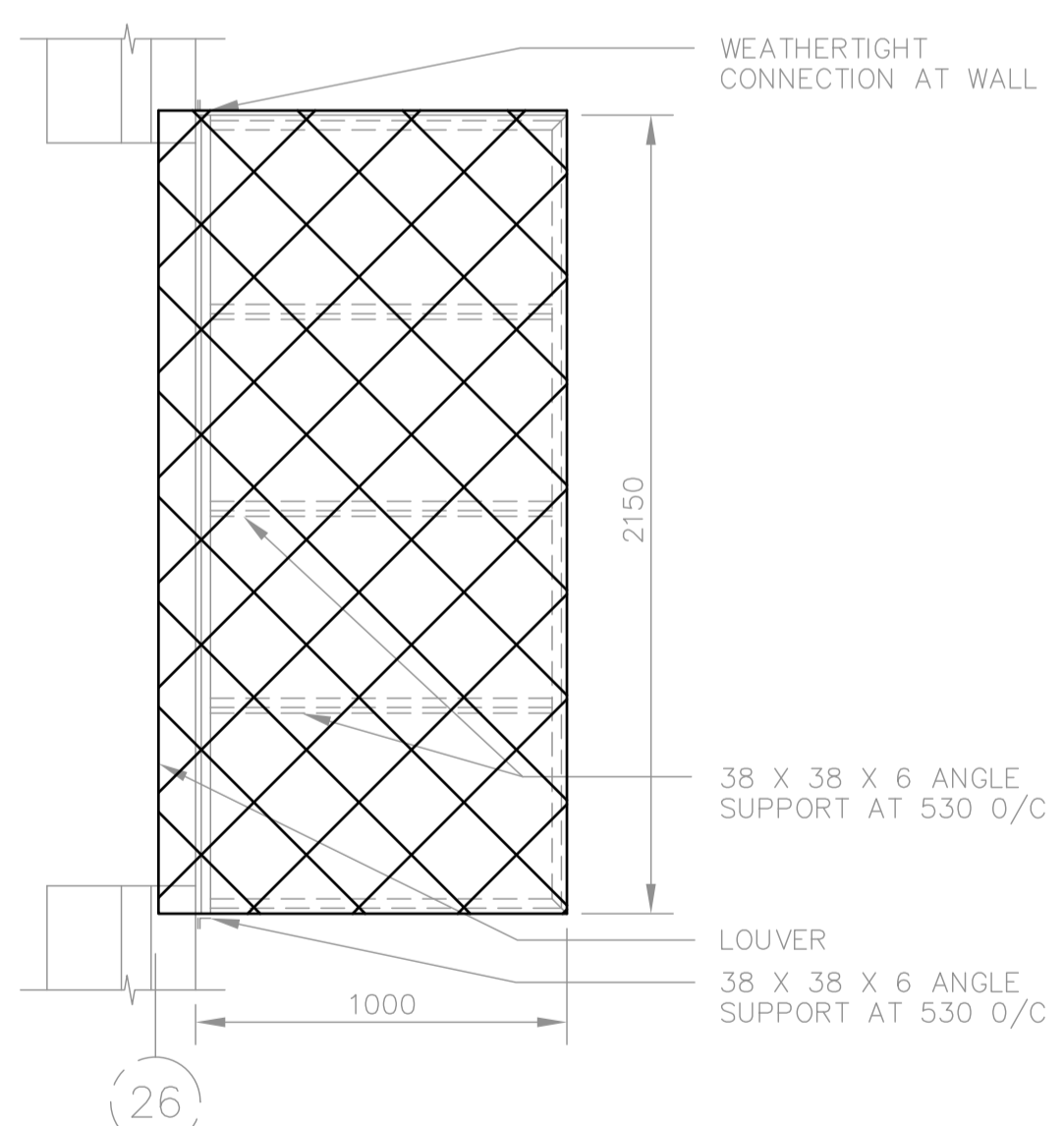
SECTION 2
M206 M207 1 : 50

REMOVE EXISTING AIR COMPRESSORS COMPLETE WITH ASSOCIATED PIPING, ELECTRICAL WIRING AND CONTROLS. ALL ASSOCIATED REMOVALS SHALL EXTEND TO THE SOURCES. PROVIDE ALL CAP OFF AND TERMINATION AT THE SOURCES, COMPLETE WITH ALL FINISHES TO MATCH EXISTING CONDITION. PATCH UP ALL REMAINING OPENINGS DUE TO REMOVALS AND REPAIR TO MATCH EXISTING CONDITION.

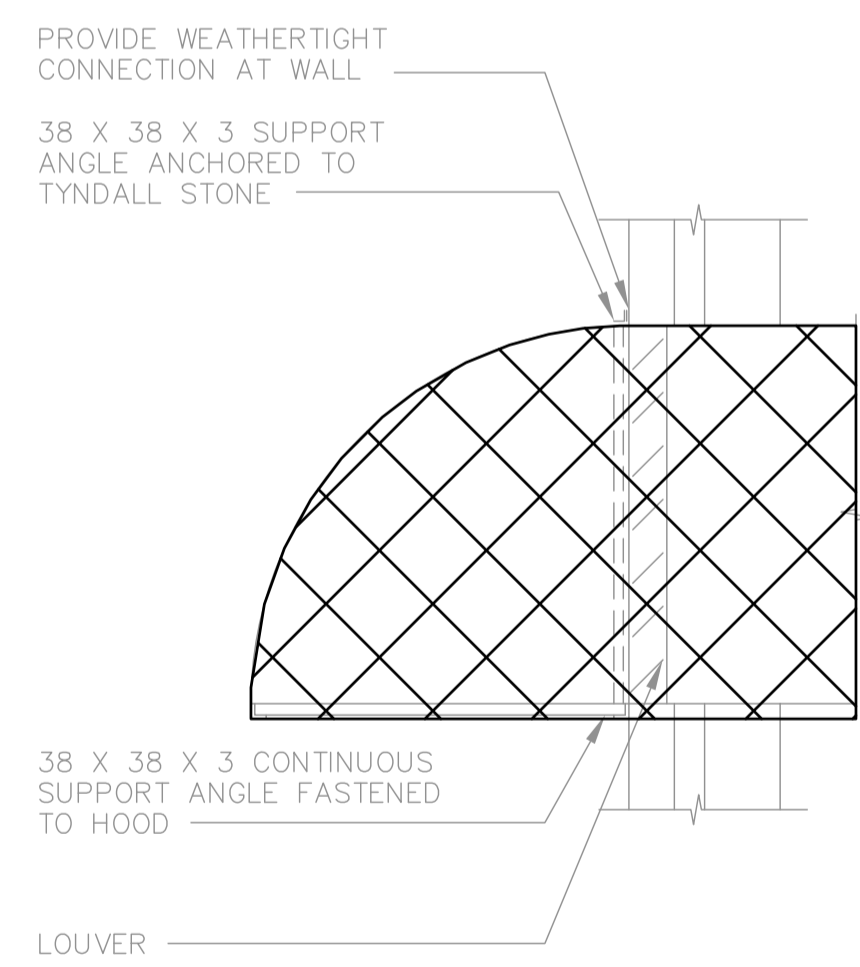
REMOVE EXISTING AIR COMPRESSORS COMPLETE WITH ASSOCIATED PIPING, ELECTRICAL WIRING AND CONTROLS. ALL ASSOCIATED REMOVALS SHALL EXTEND TO THE SOURCES. PROVIDE ALL CAP OFF AND TERMINATION AT THE SOURCES, COMPLETE WITH ALL FINISHES TO MATCH EXISTING CONDITION. PATCH UP ALL REMAINING OPENINGS DUE TO REMOVALS AND REPAIR TO MATCH EXISTING CONDITION.



SECTION 3
PSA COMPRESSOR ROOM PART PLAN



SECTION 5
INTAKE HOOD
1 : 50

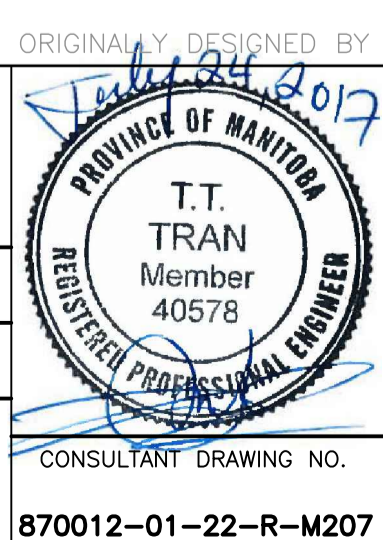


SECTION 4
1 : 20

- NOTES:**
- FOR NEW CONSTRUCTION SEE PROCESS/MECHANICAL PRIMARY SLUDGE FERMENTERS/THICKENERS DRAWINGS.
 - REFER TO GENERAL DEMOLITION NOTES DRAWING 1-0102-DAAA-AD01.
 - CONFIRMED ASBESTOS CONTAINING MATERIALS IN DUCTWORK INSULATION. REFER TO ASBESTOS ABATEMENT SPECIFICATIONS FOR ABATEMENT PROCEDURES.
 - CONFIRMED ASBESTOS CONTAINING MATERIALS IN HEATING WATER FITTINGS INSULATION. REFER TO ASBESTOS ABATEMENT SPECIFICATIONS FOR ABATEMENT PROCEDURES.

AS CONSTRUCTED
DATE SEPTEMBER 1993 BY P.R.B.
APPROVED BY

B.M. ELEV.		Mac LAREN ENGINEERS INC. WARDROP ENGINEERING INC.
		ENGINEERING CONSULTANTS
	DESIGNED BY S.Q.	CHECKED BY
	DRAWN BY V.J.H.	APPROVED BY
	HOR. SCALE: 1:50	RELEASED FOR CONSTRUCTION:
	VERTICAL:	DATE JAN.1990
01 ISSUED FOR ADDENDUM 7 - 976-2016 07/20/2017 JBC		
00 ISSUED FOR CONSTRUCTION - 976-2016 04/05/2017 K.F.		
NO. REVISIONS	DATE BY	DATE



THE CITY OF WINNIPEG
WORKS AND OPERATIONS DIVISION
WATERWORKS, WASTE & DISPOSAL DEPARTMENT

SOUTH END WATER POLLUTION CONTROL CENTRE
PSA EXPANSION - MECHANICAL
COMPRESSOR ROOM SECTIONS
VENTILATION AND PIPING

CITY DRAWING NUMBER
SHEET OF
SEP-377

780012-01-22-R-M207