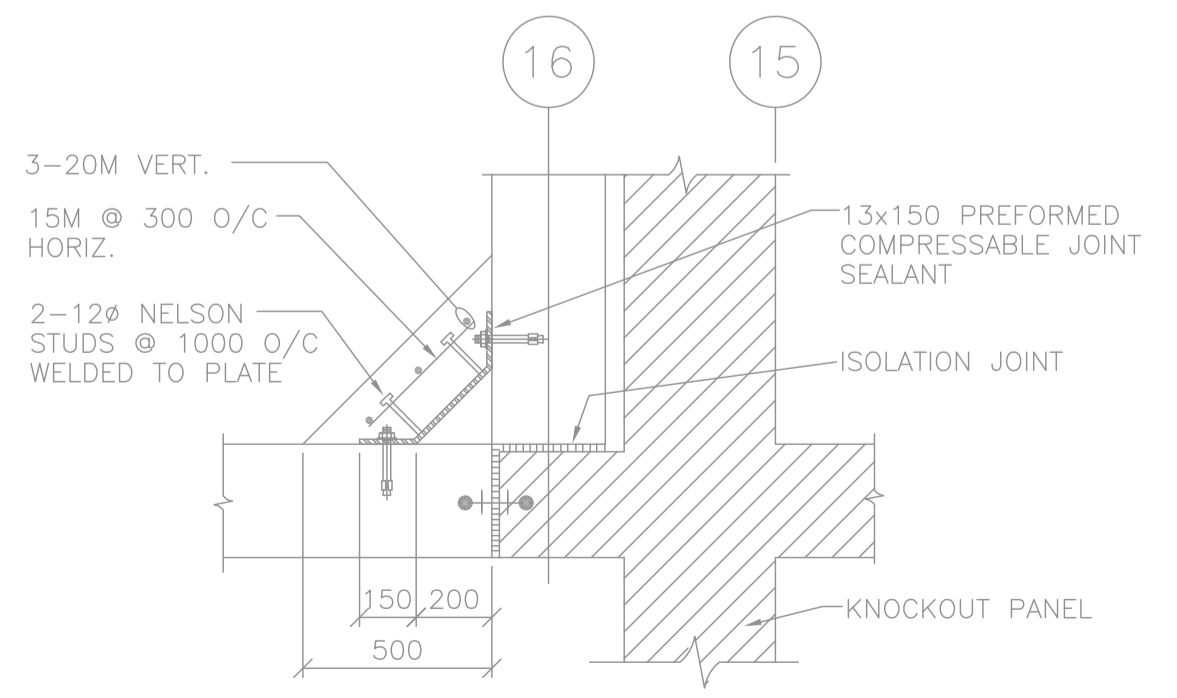


1 PLAN AT ELEV. 228.130
1:100

2 PLAN AT ELEV. 231.038
1:100

NOTES:
1. FOR GENERAL NOTES SEE S101.

- NOTES:**
1. FOR NEW CONSTRUCTION SEE STRUCTURAL BIOFILTER DRAWINGS.
 2. REFER TO GENERAL DEMOLITION NOTES ON DRAWING 1-0102-DAAA-AD01.
 3. CONFIRMED ASBESTOS CONTAINING MATERIALS IN EXTERIOR WALL PLASTER. REFER TO ASBESTOS ABATEMENT SPECIFICATIONS FOR ABATEMENT PROCEDURES.



2 CORNER SUPPORT FILLET
1:20

AS CONSTRUCTED
DATE SEPTEMBER 1993 BY C.J.A.
APPROVED BY

ORIGINALLY DESIGNED BY
JULY 21 2017
PROVINCE OF MANITOBA
REGISTERED PROFESSIONAL ENGINEER
LUI
Member
37003
CONSULTANT DRAWING NO.
870012-01-19-R-S102

B.M. ELEV.	DATE	BY	DESCRIPTION	DESIGNED BY	CHECKED BY
	07/17	JBC	ISSUED FOR ADDENDUM 7 - 976-2016	K.L.	
	04/17	G.O.	ISSUED FOR CONSTRUCTION - 976-2016		
	07/16	G.O.	ISSUED FOR 60% PRELIMINARY REVIEW		
	09/93	P.R.B.	AS CONSTRUCTED	N.M./B.R.	
	07/90	K.L.	ISSUED FOR TENDER		
	04/90	K.L.	ISSUED FOR APPROVAL		
NO. REVISIONS	DATE	BY	DATE	JULY 1990	

THE CITY OF WINNIPEG
WORKS AND OPERATIONS DIVISION
WATERWORKS, WASTE & DISPOSAL DEPARTMENT

SOUTH END WATER POLLUTION CONTROL CENTRE
OXYGEN REACTOR EXPANSION-STRUCTURAL
FLOOR PLAN ELEV 228.130 & 231.038

CITY DRAWING NUMBER
SHEET OF
SEP-338