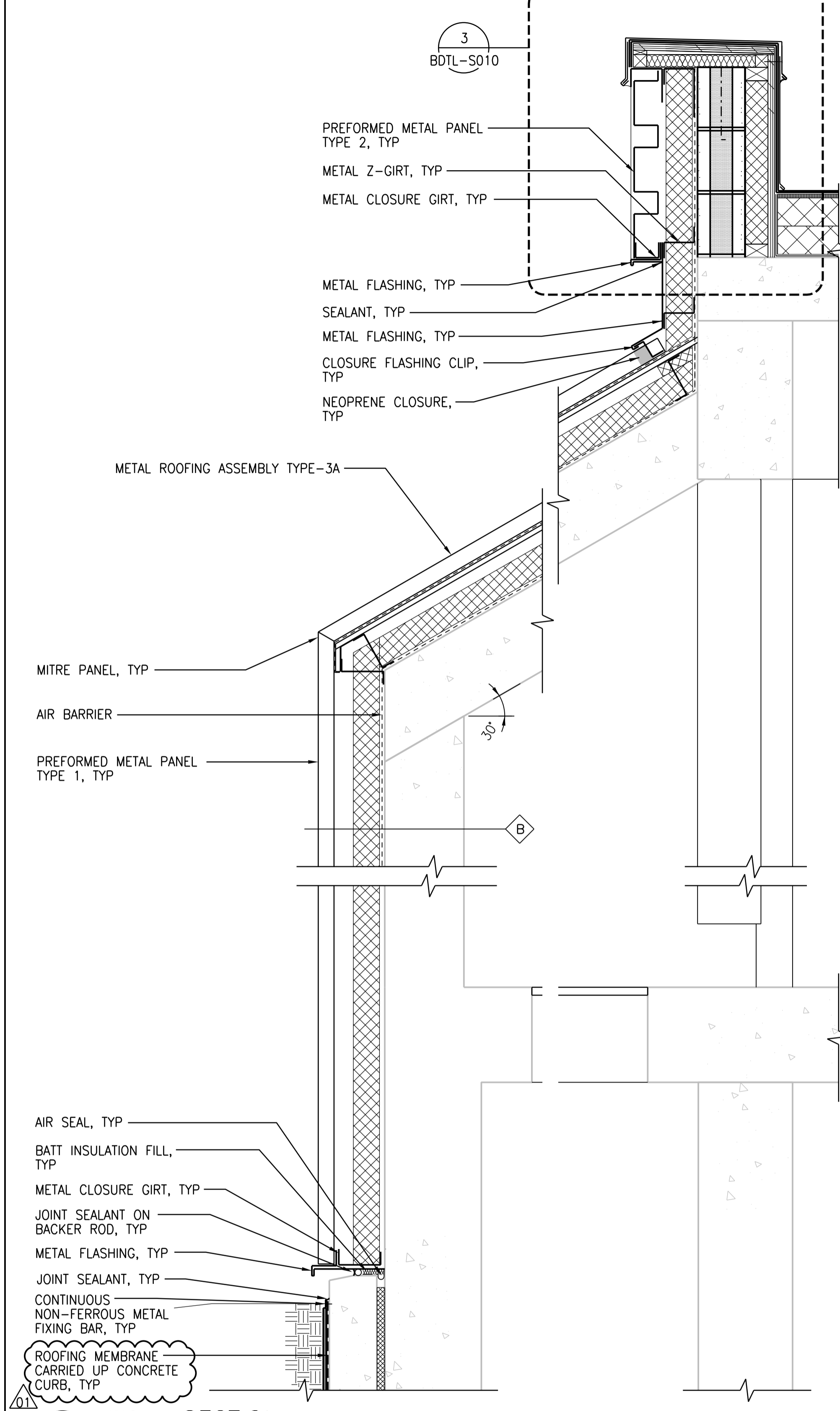
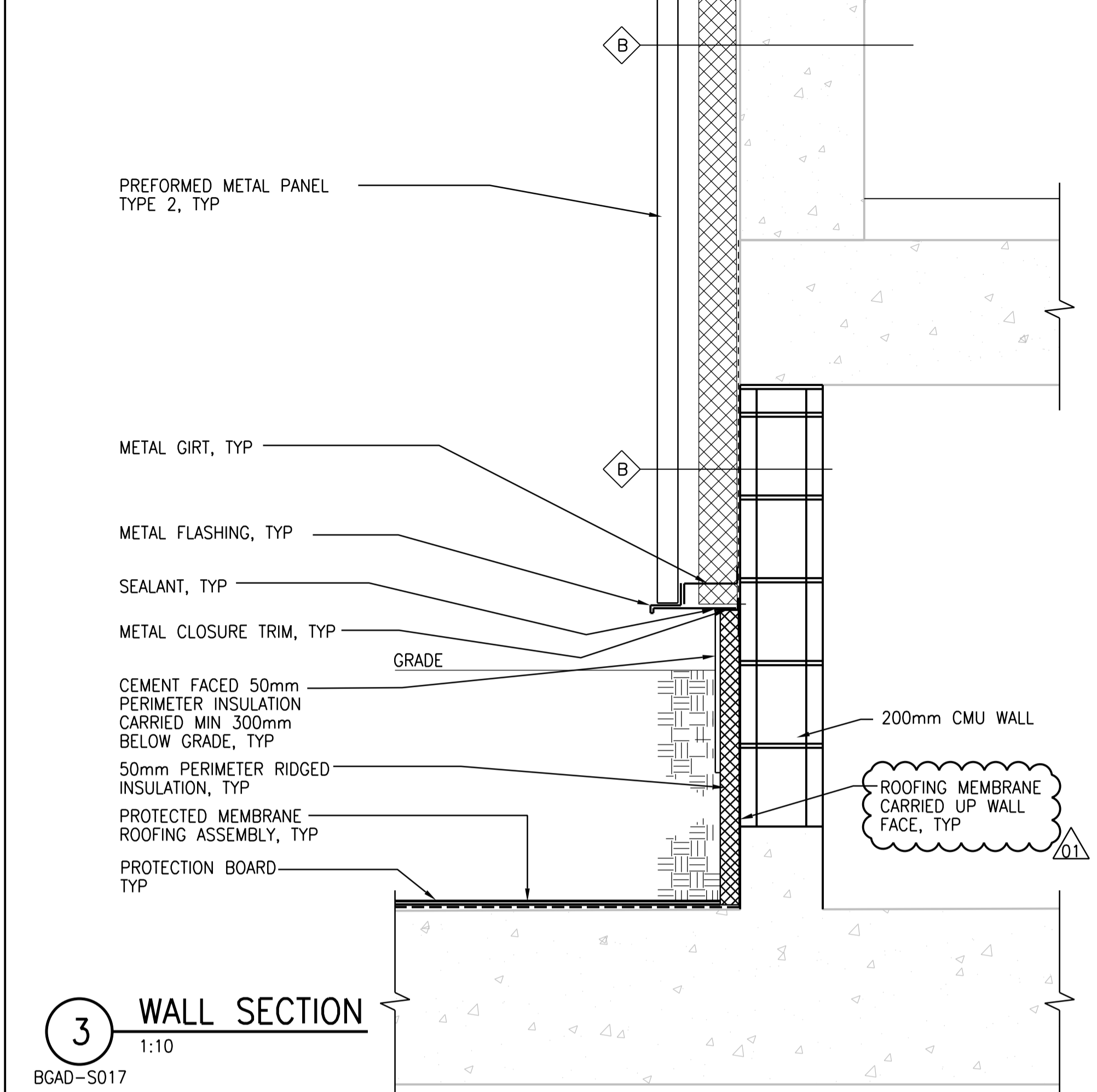


1 WALL SECTION
1:10
BGAD-S009
BGAD-S018

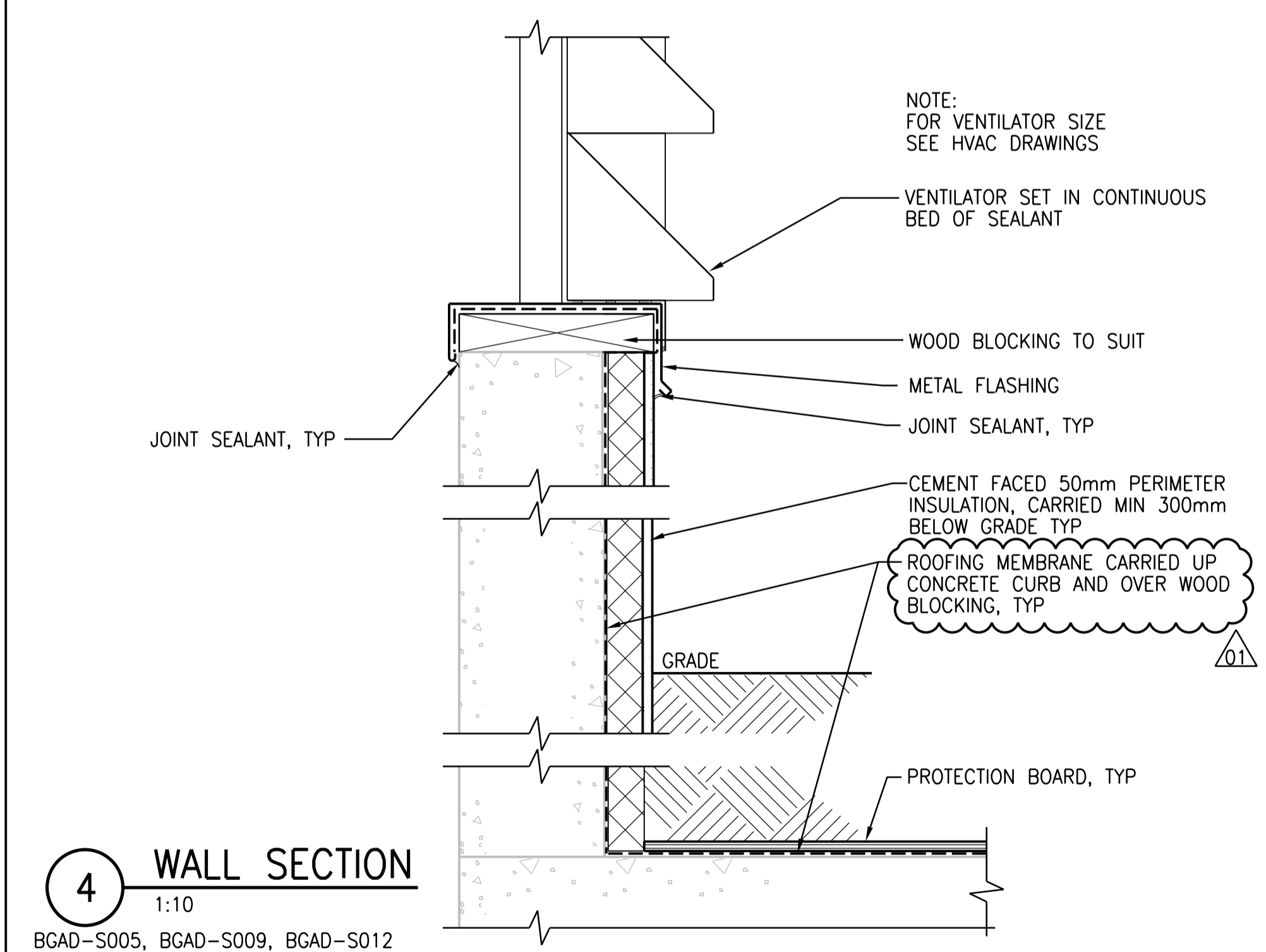


2 WALL SECTION
1:10
BGAD-S009
BGAD-S017

APEGM
Certificate of Authorization
CH2M HILL Canada Ltd.
No. 1441



3 WALL SECTION
1:10
BGAD-S017



4 WALL SECTION
1:10
BGAD-S005, BGAD-S009, BGAD-S012

NO.	REVISIONS	DATE	DESIGN	CHECK
01	ISSUED FOR ADDENDUM 7 - 976-2016	2017/07/21	R.B.	J.C.
00	ISSUED FOR CONSTRUCTION - 976-2016	2017/04/05	N.B.	J.C.

CH2MHILL CANADA
Architects Inc.
SNC-LAVALIN
DESIGNED BY: R. ZAKKO
DRAWN BY: N. BOYCHUK
SCALE: AS SHOWN
DATE: 2017/04/05
CONSULTANT NO.: 474248
CHECKED BY: B. KOLIS-HUPA
APPROVED BY: H.T. FREIHAMMER
ISSUED FOR CONSTRUCTION BY: J. SHUMKA
DATE: 2017/04/05

ENGINEER'S SEAL
PROVINCE OF MANITOBA
REID ZAKKO
REGISTERED ARCHITECT

THE CITY OF WINNIPEG
Winnipeg WATER AND WASTE DEPARTMENT
SOUTH END WATER POLLUTION CONTROL CENTRE
SEWPPC UPGRADING/EXPANSION PROJECT
BUILDING
SECONDARY CLARIFIERS 4 AND 5
WALL SECTIONS - PART 2
CITY DRAWING NUMBER: 1-0102-BDTL-S004
SHEET: 001
REV: 01
SIZE: A1