

NOTES:

1. ALL EXCAVATED MATERIAL WITHIN 107.0 OF THE REGULATED SUMMER RIVER LEVEL (RSRL) MUST BE REMOVED FROM SITE (NO STOCKPILING).

METRIC

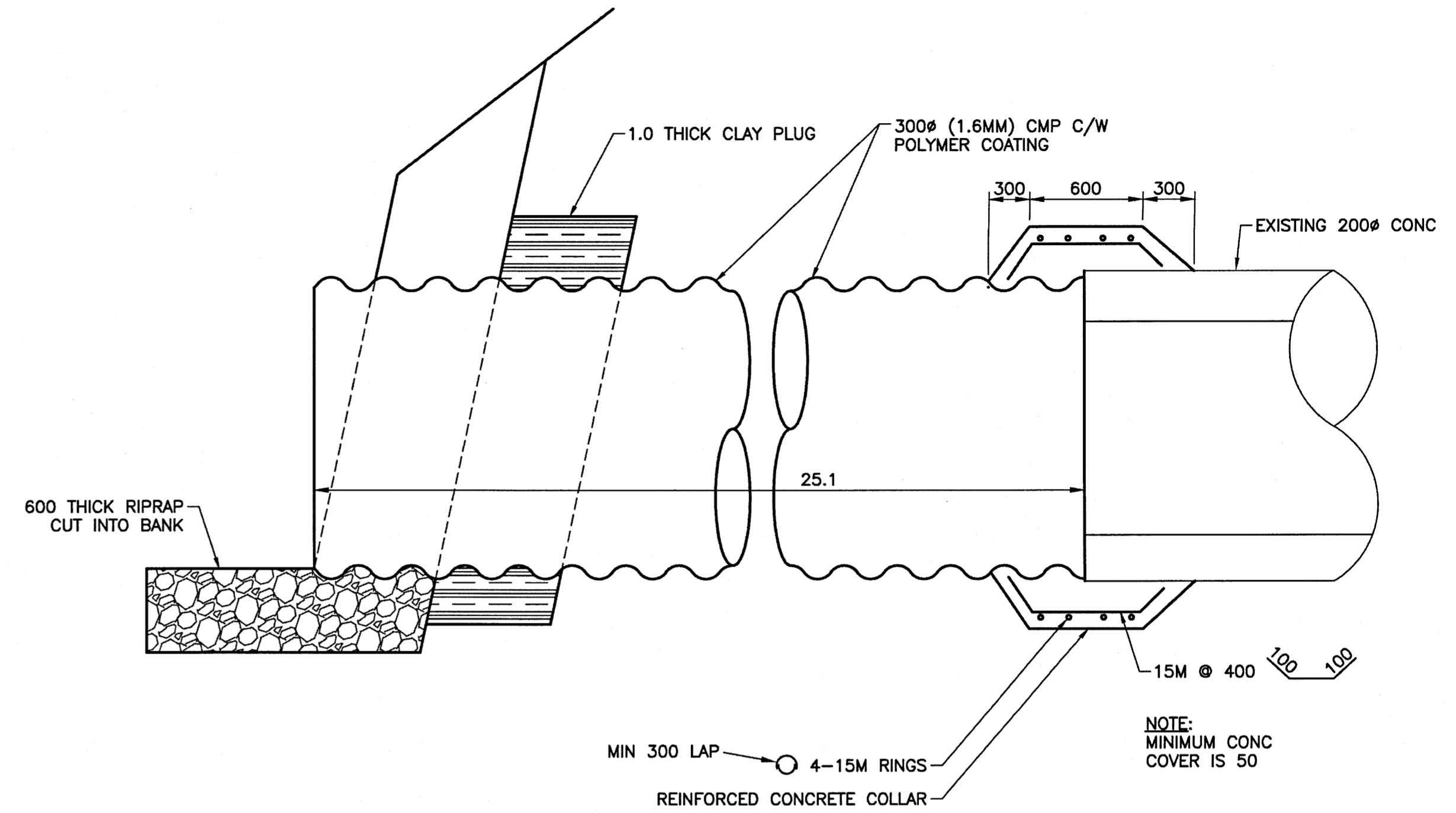
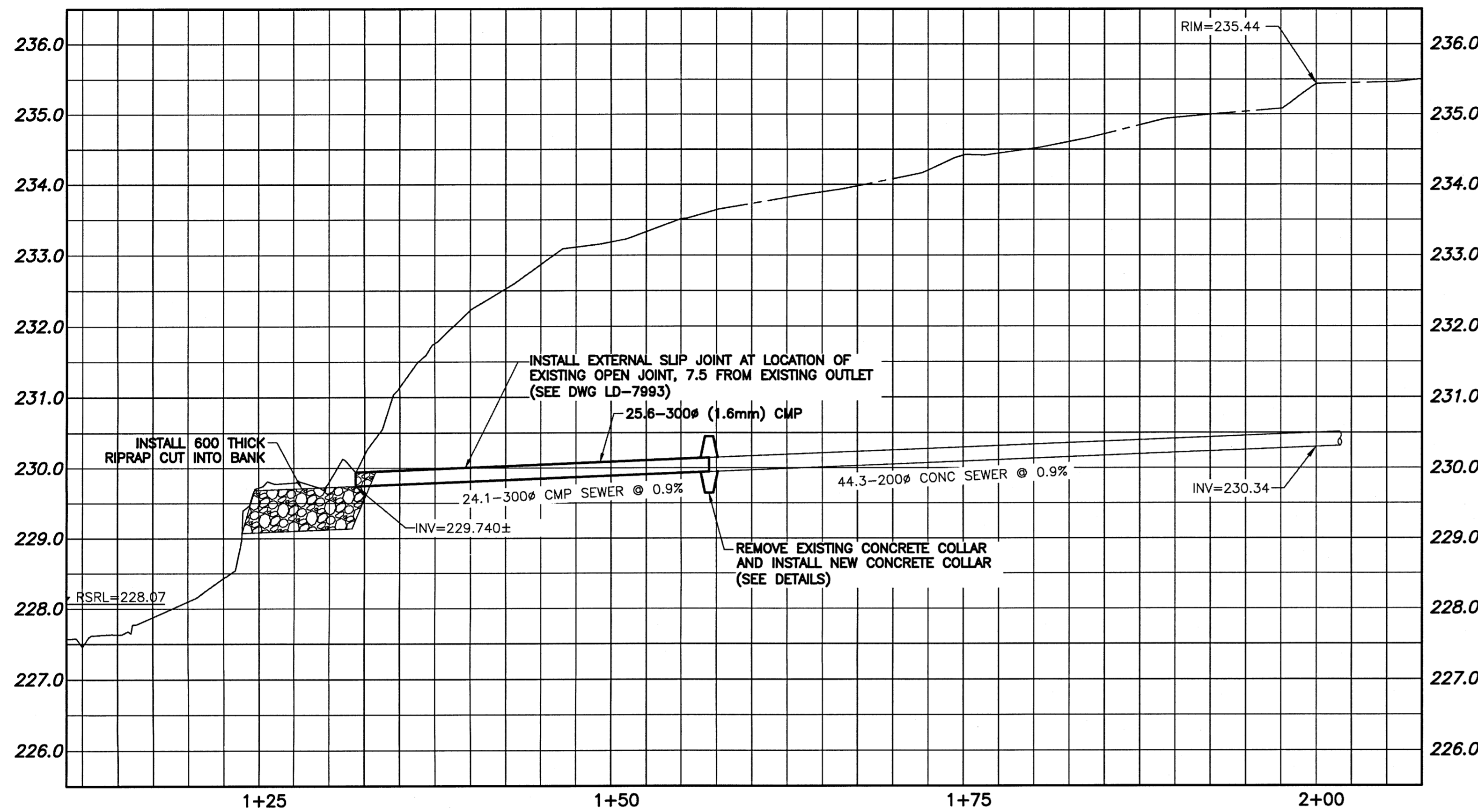
WHOLE NUMBERS INDICATE MILLIMETRES
DECIMALIZED NUMBERS INDICATE METRES

WARNING

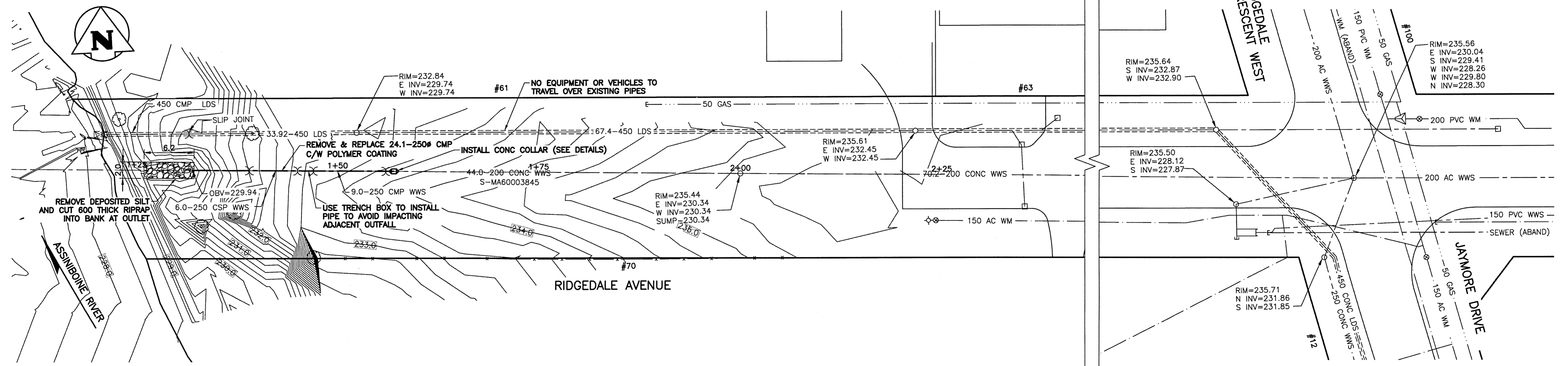
1. NOTIFY THE GAS COMPANY OF THE PROPOSED LOCATION OF EXCAVATION.
2. TAKE PRECAUTION TO AVOID DAMAGE TO GAS COMPANY INSTALLATIONS.
3. SEE PROVINCIAL REGULATION 210/72 FOR DETAILS.

PROPERTY LIMITS DELINEATION

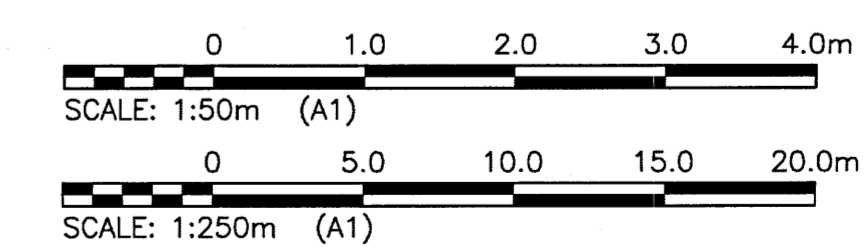
DELINEATION OF PROPERTY LIMITS AS SHOWN ON THIS DWG DOES NOT REPRESENT A "LEGAL SURVEY". KGS GROUP MAKES NO REPRESENTATION OR WARRANTY AS TO THE ACCURACY OF PROPERTY LIMITS DELINEATED ON THIS DWG, NOR ON THE DIMENSIONAL ACCURACY OF DWG FEATURES RELATIVE TO THOSE PROPERTY LIMITS.



CULVERT END & REINFORCED CONCRETE JOINT DETAIL
SCALE: NTS



APEGM
Certificate of Authorization
KGS Group
No. 245



APEGM
Certificate of Authorization
KGS Group
No. 245

| | | | | | | | |
|----------|---------------------|----------|----------------|----------------|----------|----------|----------------|
| 150 WM | WATERMAIN | 150 WM | HYDRO | | | | |
| ⊕ | HYDRANT | ⊕ | M.T.S. | | | | |
| ⊙ | VALVE | ⊙ | PROPERTY LINE | | | | |
| 300 LDS | LAND DRAINAGE SEWER | 300 LDS | SURVEY BAR | | | | |
| 250 WWS | WASTE WATER SEWER | 250 WWS | LIGHT STANDARD | | | | |
| ○ | MANHOLE | ● | HYDRO POLE | | | | |
| □ | CATCH BASIN | — | GUY WIRE | | | | |
| ▽ | CURB INLET | ○ | SIGN | | | | |
| + | JUNCTIONS | —+— | BUSH LINE | | | | |
| — — | CULVERT | — — | FENCE | | | | |
| — — | GAS | — — | ELEVATION | | 32.231 | | |
| EXISTING | LEGEND-PLAN | PROPOSED | EXISTING | LEGEND-PROFILE | PROPOSED | EXISTING | LEGEND-PROFILE |

LOCATION APPROVED UNDERGROUND STRUCTURES

| | |
|--------------------------------|------|
| SUPV. U/G STRUCTURES COMMITTEE | DATE |
| | |

NOTE:
LOCATION OF UNDERGROUND STRUCTURES AS SHOWN ARE BASED ON THE BEST INFORMATION AVAILABLE BUT NO GUARANTEE IS GIVEN THAT ALL EXISTING UTILITIES ARE SHOWN OR THAT THE GIVEN LOCATIONS ARE EXACT. CONFIRMATION OF EXISTENCE AND EXACT LOCATION OF ALL SERVICES MUST BE OBTAINED FROM THE INDIVIDUAL UTILITIES BEFORE PROCEEDING WITH CONSTRUCTION.

B.M. KGS_BASE
ELEV=249.213 NAD83 CSRS CGVD28

KGS GROUP
CONSULTING ENGINEERS

| | |
|----------------------------------|----------------------------|
| DESIGNED BY JB | CHECKED BY RBO |
| DRAWN BY DMW | APPROVED BY |
| HOR. SCALE: 1:250 | RELEASED FOR CONSTRUCTION: |
| VERTICAL: 1:50 | |
| ISSUED FOR CONSTRUCTION 03/11/16 | |
| NO. REVISIONS | DATE BY |
| | 29/09/16 |

ENGINEER'S SEAL
J. A. [Signature]
Member 34869
2016-11-03

THE CITY OF WINNIPEG
WATER & WASTE DEPARTMENT

2017 OUTFALL RENEWAL/
REHABILITATION PROGRAM
RIDGEDALE AVENUE OUTFALL (AS-26)
PLAN AND PROFILE
S-MA60003854

SHEET 04 OF 08
CAD FILE DRAWING NUMBER 16-0107-021_CALL
CITY DRAWING NUMBER LD-7989

CONSULTANT DRAWING NO. 16-0107-021-C04

File Name: U:\FWS\16-0107-021\16-0107-021_CALL.dwg - Tab: C04 Plotted By: dweber 16/11/03 [Thu 3:04pm] Plot Scale: 1:1