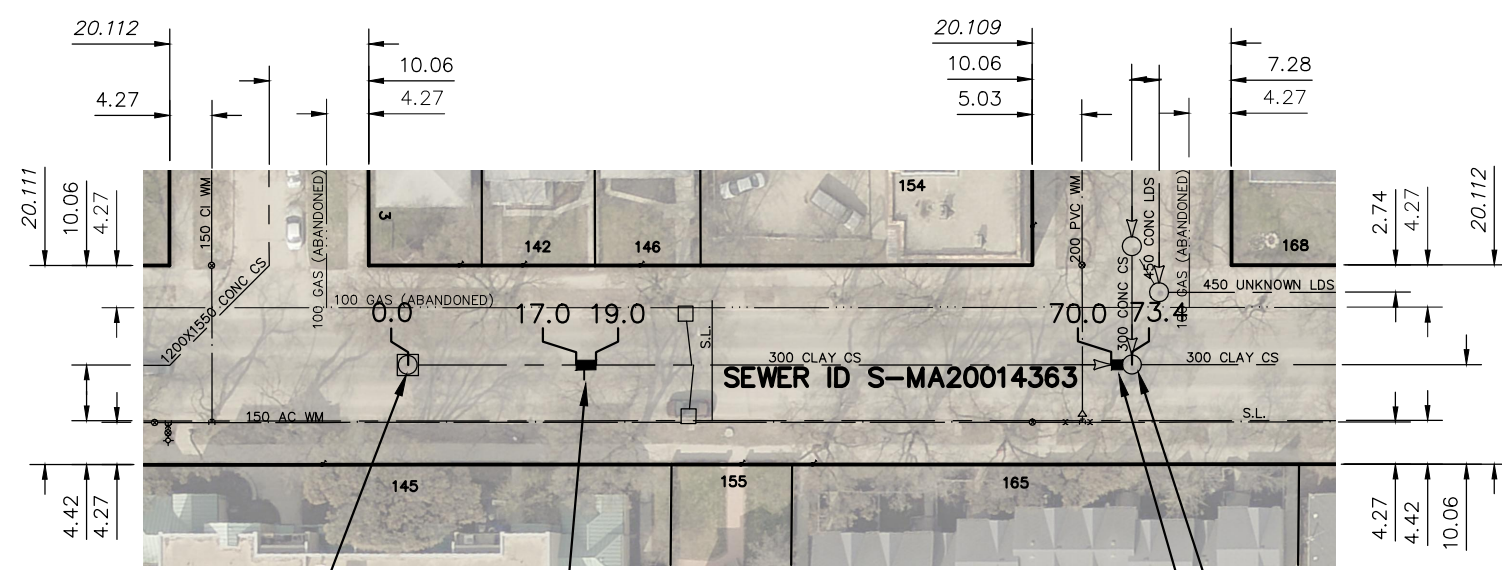
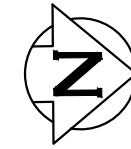


PURCELL AVE

MARYLAND STREET

ALLOWAY AVE



SEWER JUNCTION INFORMATION FROM SEWER VIDEO INSPECTION		
SEWER ID S-MA20014363		
DISTANCE FROM MH ID S-MH20012984		
DISTANCE	DIAMETER	CLOCK
2.5	250	3
5.4	150	10
7.8	150	10
14.2	150	10
17.8	150	2
21.6	150	10
23.8	250	2
28.8	250	1
29.5	250	11
34.6	150	1
62.0	150	2

2.0 OF 300 SDR35 PVC SEWER REPAIR (SD-022A) INCLUDING 1 SERVICE CONNECTION

3.4 OF 300 SDR35 PVC SEWER REPAIR (SD-022B)

S-MH20012984  
RIM 232.30  
INV N 229.13

S-MH20012981  
RIM 232.35  
INV N 228.03  
INV S 228.03  
INV W 228.02

FOR INDEX SEE 11308

**WARNING**

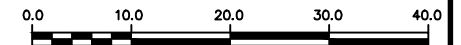
IF POWER EQUIPMENT OR EXPLOSIVES ARE TO BE USED FOR EXCAVATION ON THIS PROJECT THE CONTRACTOR MUST:

- 1) NOTIFY THE GAS COMPANY OF THE PROPOSED LOCATION OF EXCAVATION.
- 2) TAKE PRECAUTION TO AVOID DAMAGE TO GAS COMPANY INSTALLATIONS.

SEE PROVINCIAL REGULATION 210/72 FOR DETAILS

**METRIC**

WHOLE NUMBERS INDICATE MILLIMETRES  
DECIMALIZED NUMBERS INDICATE METRES



LOCATION APPROVED  
UNDERGROUND STRUCTURES

SUPV. U/G STRUCTURES COMMITTEE DATE

NOTE:

LOCATION OF UNDERGROUND STRUCTURES AS SHOWN ARE BASED ON THE BEST INFORMATION AVAILABLE BUT NO GUARANTEE IS GIVEN THAT ALL EXISTING UTILITIES ARE SHOWN OR THAT THE GIVEN LOCATIONS ARE EXACT. CONFIRMATION OF EXISTENCE AND EXACT LOCATION OF ALL SERVICES MUST BE OBTAINED FROM THE INDIVIDUAL UTILITIES BEFORE PROCEEDING WITH CONSTRUCTION.

B.M. ELEV.	NO.	REVISIONS	DATE	BY

DESIGNED BY	TS	CHECKED BY	SC
DRAWN BY	RJ	APPROVED BY	KZ
SCALE:	1:750	RELEASED FOR CONSTRUCTION	K. ZUREK
HORIZONTAL		DATE	
VERTICAL	DATE	2016 11 14	
DATE		2016 11 18	
PLOT DATE: 2016 11 18			

ENGINEER'S SEAL

**ORIGINAL SIGNED BY S.R.J. COURNOYER 16/11/14**

CONSULTANT DRAWING NUMBER



**THE CITY OF WINNIPEG**  
WATER AND WASTE DEPARTMENT  
ENGINEERING DIVISION

2016 SEWER MAIN RENEWALS  
BY EXTERNAL POINT REPAIR  
**MARYLAND STREET**  
MH AT PURCELL AVENUE (N ♯) TO  
MH AT ALLOWAY AVENUE (E)

SHEET **14** OF **29**  
CITY DRAWING NUMBER  
**11321**