

**1 SECTION (WALKWAY #1)**  
S1.2 3/4" = 1'-0"

**2 SECTION (WALKWAY #2)**  
S1.2 3/4" = 1'-0"

**GYPSUM BOARD**

**PART 1 GENERAL**

- 1.1 REFERENCES
  1. AMERICAN SOCIETY FOR TESTING AND MATERIALS INTERNATIONAL. (ASTM)
    1. ASTM C475/C475M-12, SPECIFICATION FOR JOINT COMPOUND AND JOINT TAPE FOR FINISHING GYPSUM BOARD.
    2. ASTM C840.13, STANDARD SPECIFICATION FOR APPLICATION AND FINISHING OF GYPSUM BOARD.
    3. ASTM C1002.07(2013), SPECIFICATION FOR STEEL SELF-PIERCING TAPPING SCREWS FOR THE APPLICATION OF GYPSUM PANEL PRODUCTS OR METAL PLASTER BASES TO WOOD STUDS OR STEEL STUDS.
    4. ASTM C1047.10A, STANDARD SPECIFICATION FOR ACCESSORIES FOR GYPSUM WALLBOARD AND GYPSUM VENEER BASE.
    5. ASTM C1396/C1396M.13, SPECIFICATION FOR GYPSUM WALLBOARD.
    6. CANADIAN GENERAL STANDARDS BOARD (CGSB)
      1. CAN/CGSB\_51.34\_M86(R1988), VAPOUR BARRIER, POLYETHYLENE SHEET FOR USE IN BUILDING CONSTRUCTION.

**PART 2 PRODUCTS**

- 2.1 MATERIALS
  1. STANDARD BOARD: TO ASTM C1396/C1396M REGULAR, TYPE X, 5/8 INCH THICK, 4'-0" WIDE X MAXIMUM PRACTICAL LENGTH, ENDS SQUARE CUT, EDGES TAPERED.
  2. DRYWALL FURRING: PRESSURE TREATED WOOD.
  3. STEEL DRILL SCREWS: TO ASTM C1002.
  4. CASING BEADS, CORNER BEADS, CONTROL JOINTS AND EDGE TRIM: TO ASTM C1047, PVC, 0.5MM BASE THICKNESS, PERFORATED FLANGES, ONE PIECE LENGTH PER LOCATION.
  5. POLYETHYLENE: TO CAN/CGSB\_51.34, TYPE 2.
  6. JOINT COMPOUND: TO ASTM C475/C475M, ASBESTOS-FREE.
- 2.2 FINISHES
  1. TEXTURE FINISH: ASBESTOS-FREE STANDARD WHITE TEXTURE COATING AND PRIMER-SEALER, RECOMMENDED BY GYPSUM BOARD MANUFACTURER.

**PART 3 EXECUTION**

- 3.1 ERECTION
  1. DO APPLICATION AND FINISHING OF GYPSUM BOARD IN ACCORDANCE WITH ASTM C840 EXCEPT WHERE SPECIFIED OTHERWISE.
  2. REUSE EXISTING WOOD FURRING.
  3. REPLACE DETERIORATED WOOD FURRING WHERE DIRECTED BY CONTRACT ADMINISTRATOR. TREAT CUT ENDS OF PRESSURE TREATED WOOD. COSTS FOR NEW WOOD FURRING TO BE PAID ON A UNIT PRICE.
- 3.2 APPLICATION
  1. REPLACE EXISTING POLYETHYLENE VAPOUR RETARDED WITH NEW.
  2. APPLY SINGLE LAYER GYPSUM BOARD TO WOOD FURRING USING SCREW FASTENERS. MAXIMUM SPACING OF SCREWS 12 INCHES ON CENTRE.
  3. APPLY 1/2 INCH DIAMETER BEAD OF ACOUSTIC SEALANT CONTINUOUSLY AROUND PERIPHERY OF EACH FACE OF PARTITIONING TO SEAL GYPSUM BOARD/STRUCTURE JUNCTION WHERE PARTITIONS ABUT FIXED BUILDING COMPONENTS. SEAL FULL PERIMETER OF CUT-OUTS AROUND ELECTRICAL BOXES, DUCTS, IN PARTITIONS WHERE PERIMETER SEALED WITH ACOUSTIC SEALANT.
  4. INSTALL GYPSUM BOARD ON VERTICALLY TO AVOID END-BUTT JOINTS.
  5. INSTALL GYPSUM BOARD WITH FACE SIDE OUT.
  6. DO NOT INSTALL DAMAGED OR DAMP BOARDS.
  7. LOCATE EDGE OR END JOINTS OVER SUPPORTS.
- 3.3 INSTALLATION
  1. INSTALL CASING BEADS WHERE GYPSUM BOARD BUTTS AGAINST SURFACES HAVING NO TRIM CONCEALING JUNCTION. SEAL JOINTS WITH SEALANT.
  2. INSTALL CONTROL JOINTS STRAIGHT AND TRUE.
  3. FINISH FACE PANEL JOINTS AND INTERNAL ANGLES WITH JOINT SYSTEM CONSISTING OF JOINT COMPOUND, JOINT TAPE AND TAPING COMPOUND INSTALLED ACCORDING TO MANUFACTURER'S DIRECTIONS AND FEATHERED OUT ONTO PANEL FACES.
  4. GYPSUM BOARD FINISH: FINISH GYPSUM BOARD WALLS AND CEILINGS TO FOLLOWING LEVELS IN ACCORDANCE WITH ASSOCIATION OF THE WALL AND CEILING INDUSTRIES (AWCI) INTERNATIONAL RECOMMENDED SPECIFICATION ON LEVELS OF GYPSUM BOARD FINISH:
    1. LEVEL 5 (ALL OTHER AREAS): EMBED TAPE FOR JOINTS AND INTERIOR ANGLES IN JOINT COMPOUND AND APPLY THREE SEPARATE COATS OF JOINT COMPOUND OVER JOINTS, ANGLES, FASTENER HEADS AND ACCESSORIES; APPLY A THIN SKIM COAT OF JOINT COMPOUND TO ENTIRE SURFACE; SURFACES SMOOTH AND FREE OF TOOL MARKS AND RIDGES.
  5. FINISH CORNER BEADS, CONTROL JOINTS AND TRIM AS REQUIRED WITH TWO COATS OF JOINT COMPOUND AND ONE COAT OF TAPING COMPOUND, FEATHERED OUT ONTO PANEL FACES.
  6. FILL SCREW HEAD DEPRESSIONS WITH JOINT AND TAPING COMPOUNDS TO BRING FLUSH WITH ADJACENT SURFACE OF GYPSUM BOARD SO AS TO BE INVISIBLE AFTER SURFACE FINISH IS COMPLETED.
  7. SAND LIGHTLY TO REMOVE BURRED EDGES AND OTHER IMPERFECTIONS. AVOID SANDING ADJACENT SURFACE OF BOARD.
  8. COMPLETED INSTALLATION TO BE SMOOTH, LEVEL OR PLUMB, FREE FROM WAVES AND OTHER DEFECTS AND READY FOR SURFACE FINISH.
  9. APPLY ONE COAT OF WHITE PRIMER SEALER OVER SURFACE TO BE TEXTURED. WHEN DRY APPLY TEXTURED FINISH IN ACCORDANCE WITH MANUFACTURER'S INSTRUCTIONS.
  10. MIX JOINT COMPOUND SLIGHTLY THINNER THAN FOR JOINT TAPING.
  11. APPLY THIN COAT TO ENTIRE SURFACE USING TROWEL OR DRYWALL BROADKNIFE TO FILL SURFACE TEXTURE DIFFERENCES, VARIATIONS OR TOOL MARKS.
  12. ALLOW SKIM COAT TO DRY COMPLETELY.
  13. REMOVE RIDGES BY LIGHT SANDING OR WIPING WITH DAMP CLOTH.
  14. PROVIDE PROTECTION THAT ENSURES GYPSUM DRYWALL WORK WILL REMAIN WITHOUT DAMAGE OR DETERIORATION AT TIME OF SUBSTANTIAL COMPLETION.

**PAINTING**

**PART 1 GENERAL**

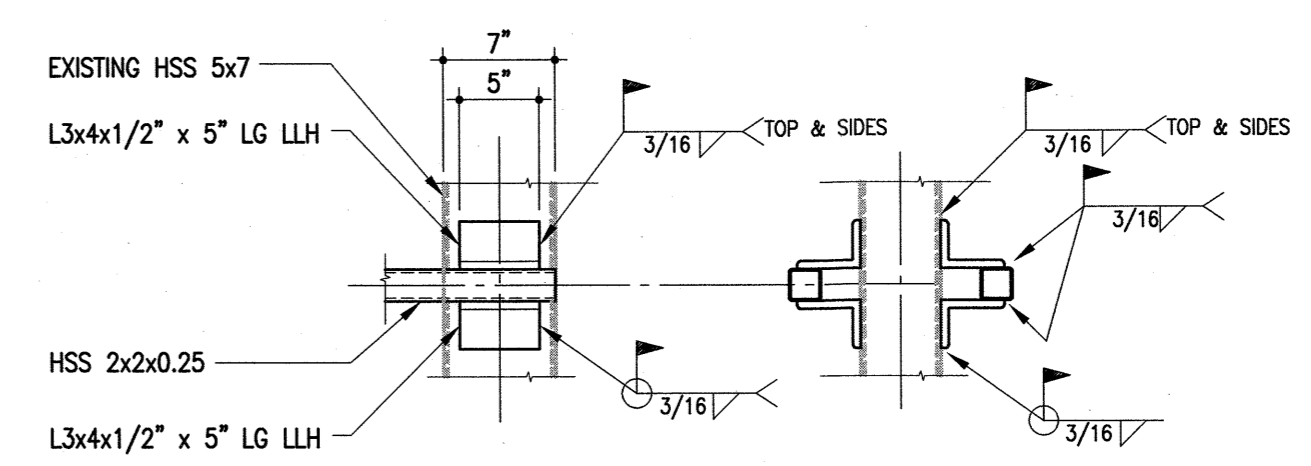
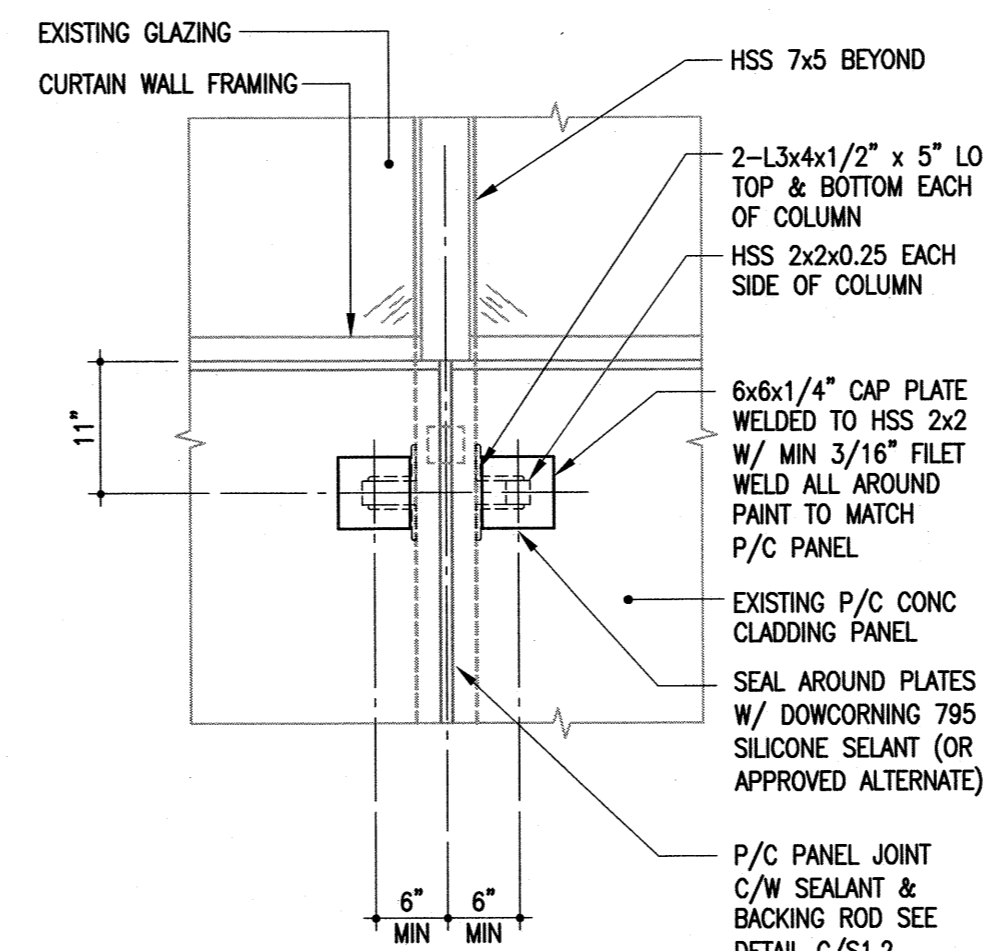
- 1.1 REFERENCES
  1. MASTER PAINTERS INSTITUTE (MPI)
  1. MPI ARCHITECTURAL PAINTING SPECIFICATIONS MANUAL.
  2. MPI MAINTENANCE REPAINTING MANUAL.

**PART 2 PRODUCTS**

- 2.1 MATERIALS
  1. PAINT MATERIALS LISTED IN THE MPI APPROVED PRODUCTS LIST (APL) ARE ACCEPTABLE FOR USE ON THIS PROJECT.
  2. PROVIDE PAINT MATERIALS FOR PAINT SYSTEMS FROM SINGLE MANUFACTURER.
  3. ONLY QUALIFIED PRODUCTS WITH E3 OR BETTER "ENVIRONMENTALLY FRIENDLY" RATING ARE ACCEPTABLE FOR INTERIOR USE ON THIS PROJECT.
  4. CONFORM TO LATEST MPI REQUIREMENTS FOR ALL PAINTING WORK INCLUDING PREPARATION AND PRIMING.
  5. MATERIALS (PRIMERS, PAINTS, COATINGS, VARNISHES, STAINS, LACQUERS, FILLERS, THINNERS, SOLVENTS, ETC.) IN ACCORDANCE WITH MPI - ARCHITECTURAL PAINTING SPECIFICATION MANUAL AND MPI - MAINTENANCE REPAINTING MANUAL "APPROVED PRODUCT" LISTING.
  6. PROVIDE PAINT PRODUCTS MEETING MPI "ENVIRONMENTALLY FRIENDLY" E2 OR E3 RATINGS BASED ON VOC (EPA METHOD 24) CONTENT LEVELS.
- 2.2 FINISHES AND COLOURS
  1. UNLESS INDICATED OTHERWISE ON DRAWINGS PAINTED SURFACES UNDER THIS CONTRACT TO MATCH ADJACENT EXISTING SURFACES.
- 2.3 MIXING AND TINTING
  1. PERFORM COLOUR TINTING OPERATIONS PRIOR TO DELIVERY OF PAINT TO SITE, IN ACCORDANCE WITH MANUFACTURER'S WRITTEN INSTRUCTIONS.
  2. USE AND ADD THINNER IN ACCORDANCE WITH PAINT MANUFACTURER'S RECOMMENDATIONS. DO NOT USE KEROSENE OR SIMILAR ORGANIC SOLVENTS TO THIN WATER-BASED PAINTS.
  3. THIN PAINT FOR SPRAYING IN ACCORDANCE WITH PAINT MANUFACTURER'S INSTRUCTIONS.
  4. REMIX PAINT IN CONTAINERS PRIOR TO AND DURING APPLICATION TO ENSURE BREAK-UP OF LUMPS, COMPLETE DISPERSION OF SETTLED PIGMENT, AND COLOUR AND GLOSS UNIFORMITY.
- 2.4 PAINTING
  1. STRUCTURAL STEEL AND METAL FABRICATIONS
    1. EXTERIOR: EXT 5.1D ALKYD, G5 FINISH.
    2. INTERIOR: INT 5.1E ALKYD - G5 FINISH.
  2. GYPSUM BOARD:
    1. INT 9.2M - INSTITUTIONAL LOW ODOUR/LOW VOC, SEMI-GLOSS.

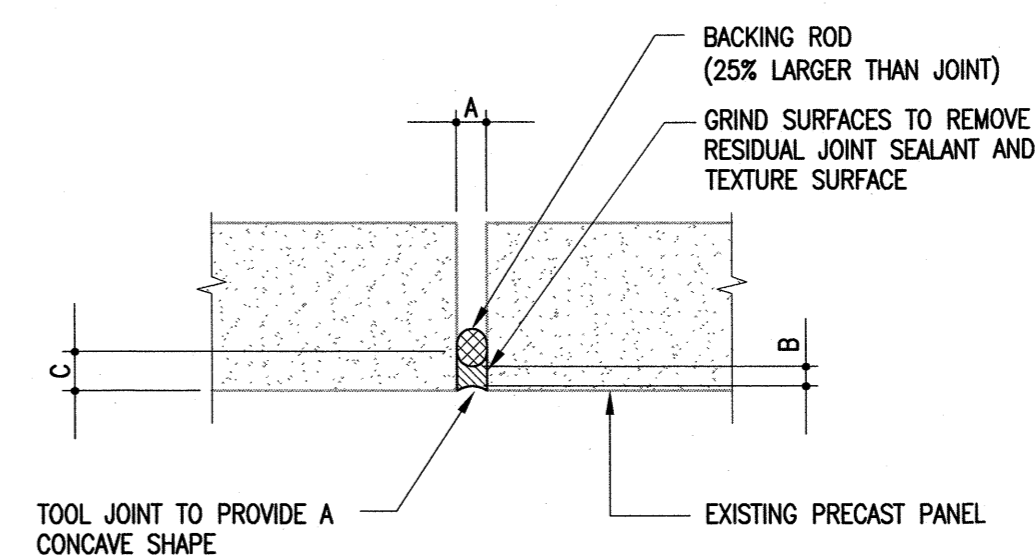
**PART 3 EXECUTION**

- 3.1 GENERAL
  1. COMPLY WITH MANUFACTURER'S WRITTEN RECOMMENDATIONS OR SPECIFICATIONS.
  2. PERFORM PREPARATION AND OPERATIONS FOR INTERIOR PAINTING IN ACCORDANCE WITH MPI - ARCHITECTURAL PAINTING SPECIFICATIONS MANUAL AND MPI - MAINTENANCE REPAINTING MANUAL EXCEPT WHERE SPECIFIED OTHERWISE.
- 3.2 PREPARATION
  1. PROTECT EXISTING BUILDING SURFACES AND ADJACENT STRUCTURES FROM PAINT SPATTERS, MARKINGS AND OTHER DAMAGE BY SUITABLE NON-STAINING COVERS OR MASKING. IF DAMAGED, CLEAN AND RESTORE SURFACES AS DIRECTED BY CONSULTANT.
  2. PROTECT ITEMS THAT ARE PERMANENTLY ATTACHED SUCH AS FIRE LABELS ON DOORS AND FRAMES.
  3. PROTECT FACTORY FINISHED PRODUCTS AND EQUIPMENT.
  4. CLEAN AND PREPARE SURFACES IN ACCORDANCE WITH MPI - ARCHITECTURAL PAINTING SPECIFICATION MANUAL AND MPI - MAINTENANCE REPAINTING MANUAL SPECIFIC REQUIREMENTS AND COATING MANUFACTURER'S RECOMMENDATIONS.
  5. PREVENT CONTAMINATION OF CLEANED SURFACES BY SALTS, ACIDS, ALKALIS, OTHER CORROSIVE CHEMICALS, GREASE, OIL AND SOLVENTS BEFORE PRIMER COAT IS APPLIED AND BETWEEN APPLICATIONS OF REMAINING COATS. APPLY PRIMER, PAINT, OR PRE-TREATMENT AS SOON AS POSSIBLE AFTER CLEANING AND BEFORE DETERIORATION OCCURS.
  6. SAND AND DUST BETWEEN COATS AS REQUIRED TO PROVIDE ADEQUATE ADHESION FOR NEXT COAT AND TO REMOVE DEFECTS VISIBLE FROM A DISTANCE UP TO 1000 MM.
  7. CLEAN METAL SURFACES TO BE PAINTED BY REMOVING RUST, LOOSE MILL SCALE, WELDING SLAG, DIRT, OIL, GREASE AND OTHER FOREIGN SUBSTANCES IN ACCORDANCE WITH MPI REQUIREMENTS.
  8. TOUCH UP OF SHOP PRIMERS WITH PRIMER AS SPECIFIED.
- 3.3 APPLICATION
  1. METHOD OF APPLICATION TO CONFORM WITH MPI PREMIUM PAINT SYSTEMS. CONFORM TO MANUFACTURER'S APPLICATION INSTRUCTIONS UNLESS SPECIFIED OTHERWISE.
  2. APPLY COATS OF PAINT CONTINUOUS FILM OF UNIFORM THICKNESS. REPAINT THIN SPOTS OR BARE AREAS BEFORE NEXT COAT OF PAINT IS APPLIED.
  3. ALLOW SURFACES TO DRY AND PROPERLY CURE AFTER CLEANING AND BETWEEN SUBSEQUENT COATS FOR MINIMUM TIME PERIOD AS RECOMMENDED BY MANUFACTURER.
  4. SAND AND DUST BETWEEN COATS TO REMOVE VISIBLE DEFECTS.
  5. FINISH SURFACES BOTH ABOVE AND BELOW SIGHT LINES AS SPECIFIED FOR SURROUNDING SURFACES, INCLUDING SUCH SURFACES AS TOPS OF INTERIOR CUPBOARDS AND CABINETS AND PROJECTING LEDGES.
  6. FINISH INSIDE OF CUPBOARDS AND CABINETS AS SPECIFIED FOR OUTSIDE SURFACES.
  7. FINISH CLOSETS AND ALCOVES AS SPECIFIED FOR ADJOINING ROOMS.



**A DETAIL**  
S1.2 3/4" = 1'-0"

**B DETAIL**  
S1.2 1" = 1'-0"



**C DETAIL**  
S1.2 3" = 1'-0"

The Contractor shall check & verify all dimensions and report any errors or omissions to the contract administrator.

No.	Date	Issue/Revision	By
0	2016-09-19	ISSUED FOR CONSTRUCTION	DJM



Consultant  
**Winnipeg**  
 THE CITY OF WINNIPEG  
 PLANNING, PROPERTY AND  
 DEVELOPMENT DEPARTMENT  
 MUNICIPAL ACCOMMODATIONS  
 DIVISION  
 3-65 GARRY STREET, R3C 4K4  
 CITY OF WINNIPEG BID OPP #822-2016  
 CITY OF WINNIPEG PROJECT #2016-053

300-275 Carlton Street  
 Winnipeg, Manitoba R3C 5R6  
 T 204. 943. 7501  
 F 204. 943. 7507  
**Crosier Kilgour & Partners Ltd.**  
 CONSULTING STRUCTURAL ENGINEERS

Project  
**CARLTON STREET  
 PROTECTED WALKWAYS**  
 PRECAST PANEL STABILIZATION  
 WINNIPEG, MANITOBA

File	Date
2016-0603	2016-09-19
Design	Drawn
DJM	JLP
Revision	Sheet No.
0	S1.2