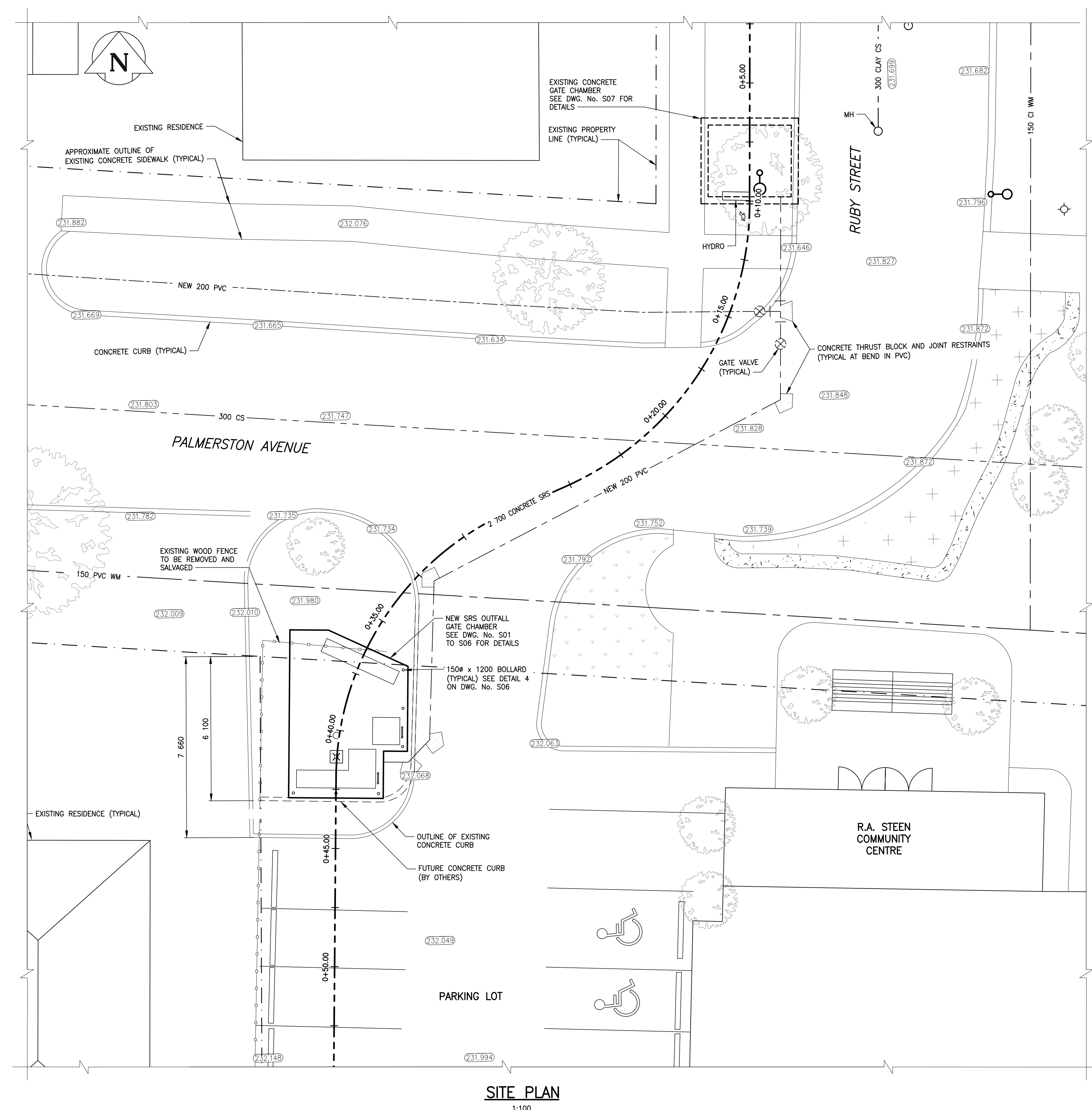
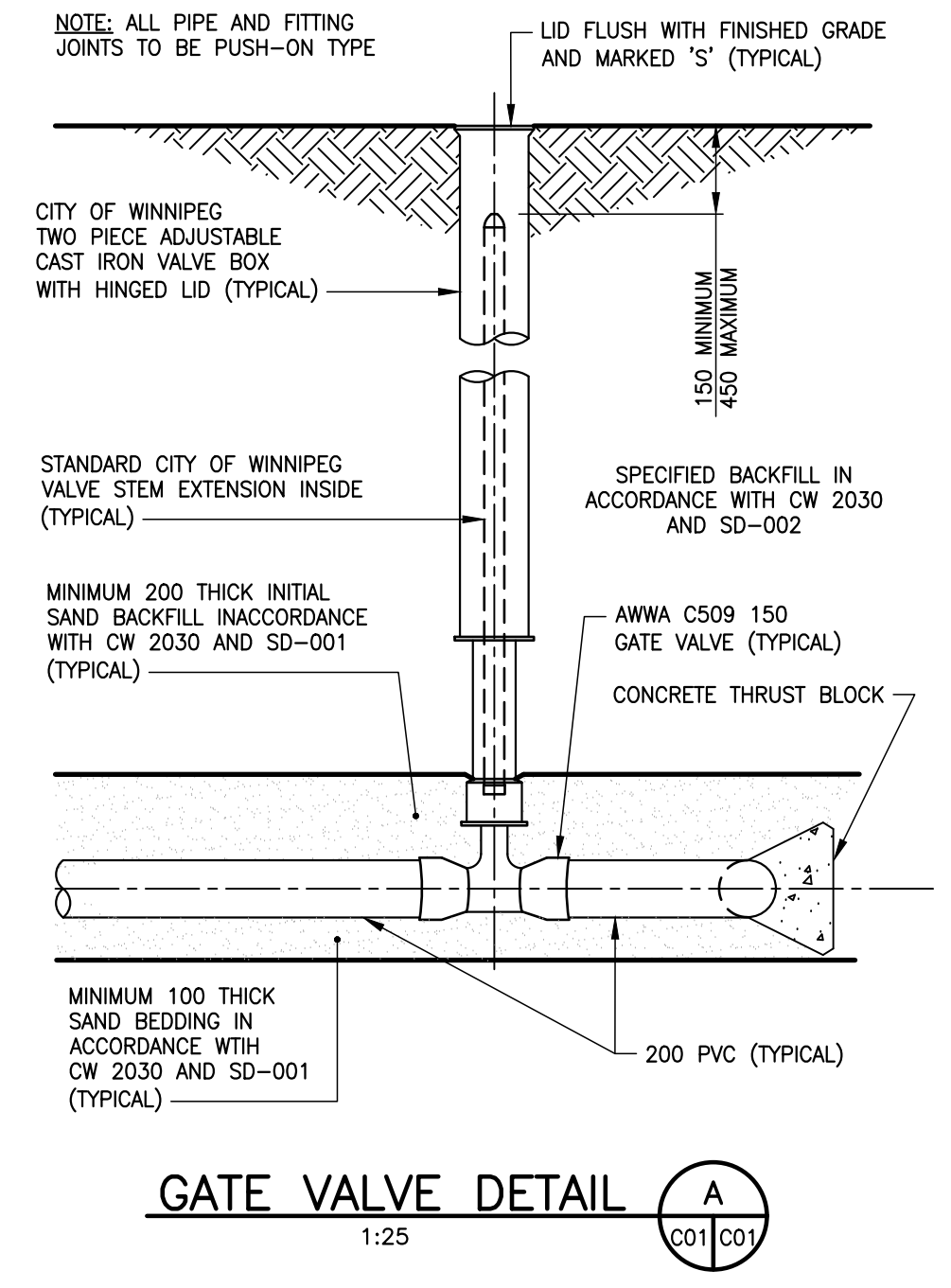


KEY PLAN
N.T.S.



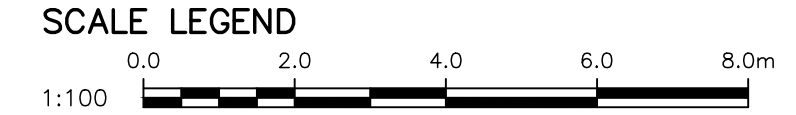
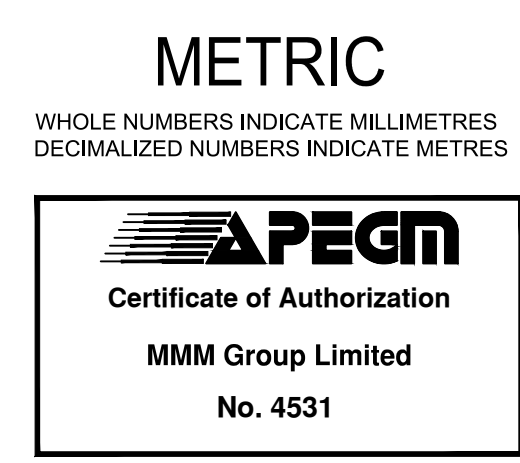
SITE PLAN
1:100



GATE VALVE DETAIL A
1:25

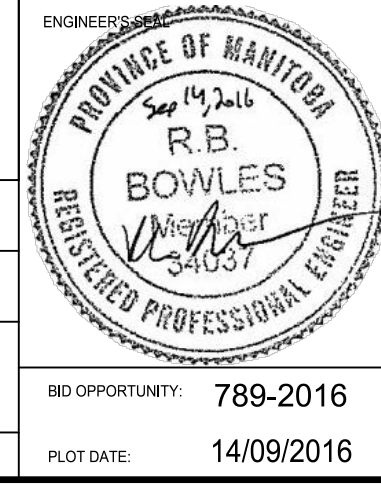
CONSTRUCTION NOTES:

- CONTRACTOR TO MAINTAIN PUBLIC ACCESS TO R.A. STEEN COMMUNITY CENTRE AT ALL TIMES DURING CONSTRUCTION.
- RESTORE ALL DISTURBED GRASS AREAS WITH IMPORTED TOP SOIL AND SOD IN ACCORDANCE WITH CW 3510.
- LEAVE SLUICE GATE IN EXISTING CHAMBER IN FULL OPEN POSITION AT ALL TIMES EXCEPT WHEN ON SITE WORKING ON GATE.
- PROVIDE TEMPORARY PUMPING OF FLOW IN SRS AS REQUIRED DURING CONSTRUCTION.
- PREVENT EXCAVATED MATERIAL, BACKFILL MATERIAL AND SOIL / WATER SLURRY FROM ENTERING THE SRS OUTFALL TO THE RIVER.
- DO NOT REMOVE EXISTING TREES UNLESS NOTED OTHERWISE. PROVIDE TREE PROTECTION IN ACCORDANCE WITH SPECIFICATIONS.
- CONFIRM LOCATION AND ELEVATION OF EXISTING SRS, SEWER MAIN AND WATER MAIN BEFORE CONSTRUCTION COMMENCES.



PLAN LEGEND	DESCRIPTION	PROPOSED	NO.	REVISIONS	DATE	BY
WM	WATER MAIN	---				
SRS	STORM RELIEF SEWER	---				
CS	COMBINED SEWER	---				
(---)	BARRIER CURB	---				
(2.50)	ELEVATION					
(X)	GATE VALVE					
(O)	LIGHT STANDARD					
(-o-)	MANHOLE					
(---)	PROPERTY LINE					
(---o---)	WOOD FENCE					
(---o---	EXISTING	DESCRIPTION	PROPOSED			

MMM Group Limited,
 Suite 111 - 93 Lombard Ave.
 Winnipeg, MB R3B 3B1
 t. 204.943.3178
 f. 204.943.4948
 www.mmm.ca
 DESIGNED BY: BB/MRI
 CHECKED BY: EH
 DRAWN BY: KD
 APPROVED BY: JPL
 HOR. SCALE: AS NOTED
 VERTICAL: AS NOTED
 RELEASED FOR CONSTRUCTION: 13/09/16
 DATE: 13/09/2016



THE CITY OF WINNIPEG
 WATER AND WASTE DEPARTMENT
 OUTFALL GATE CHAMBER UPGRADES
RUBY STREET
SRS OUTFALL GATE CHAMBER
 BID OPPORTUNITY: 789-2016
 PLOT DATE: 14/09/2016
 CONSULTANT DRAWING NUMBER: 5516047 - C01
 SHEET OF: 2 OF 34
 CITY DRAWING NUMBER: LD-7923
 SITE PLAN

Sep 14, 2016 -- 9:36am
 C:\Users\m3120329\Documents\MMM Drawings\5516047 - Ruby & Aubrey Chamber Upgrades\MMM Drawings\5516047 - 002 - 003 - Site plan.dwg -- rbs-C01

NOTE:
 These design documents are prepared solely for the use by the party with whom the design professional has entered into a contract and there are no representations of any kind made by the design professional to any party with whom the design professional has not entered into a contract.