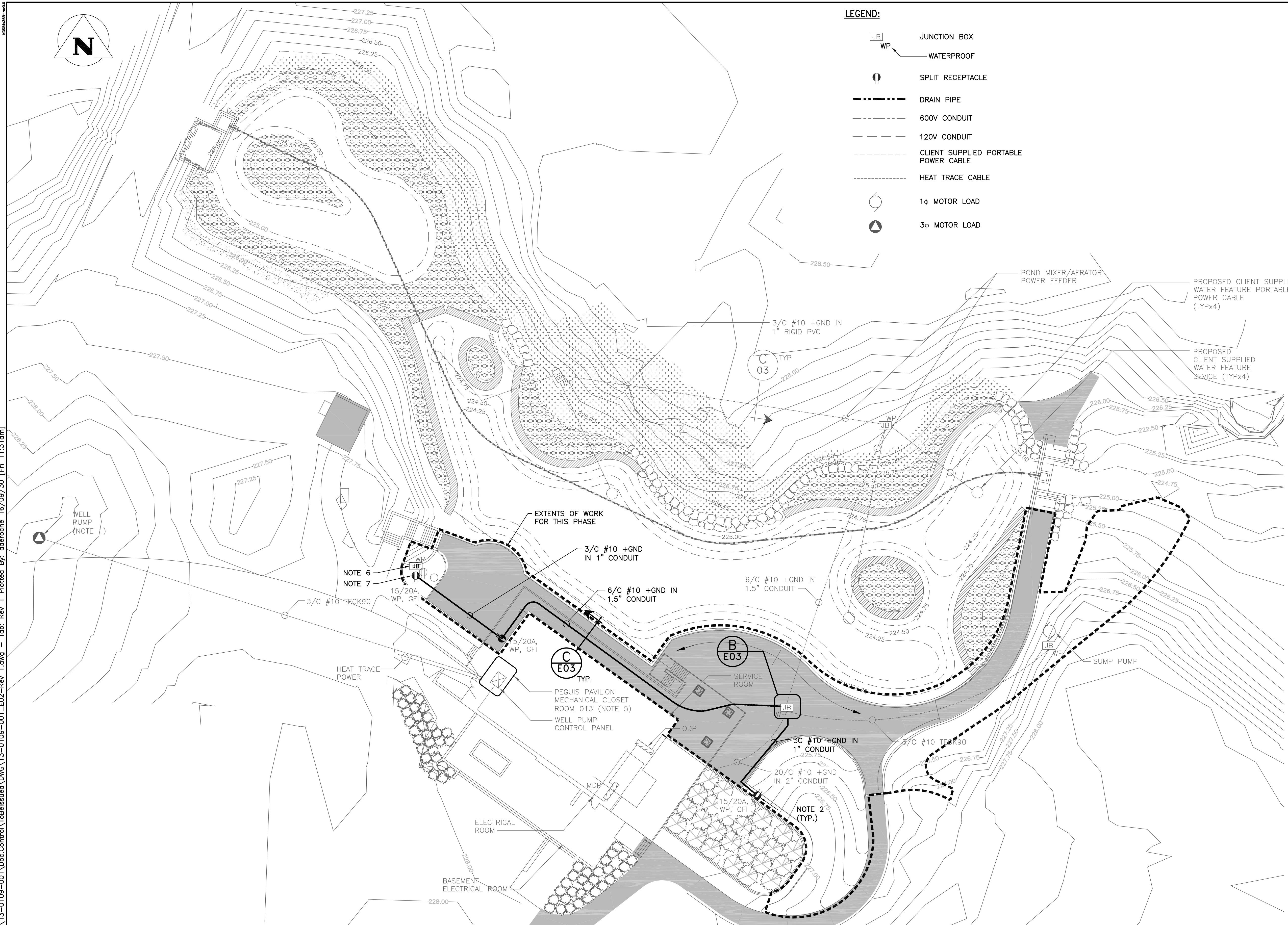
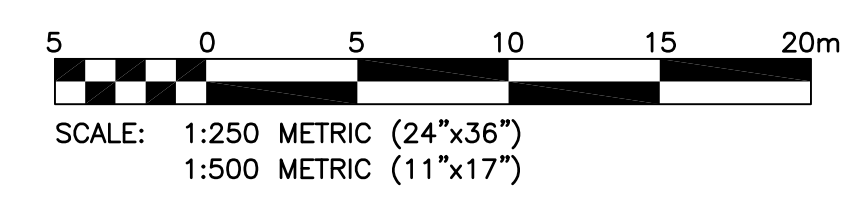


File Name: P:\Projects\2013\13-0109-001\Doc.Control\ToBeIssued\DWG\13-0109-001_E02-Rev.1.dwg - Tab: Rev. 1 Plotted By: dderochs 16/09/30 [Fri 11:31am]



- LEGEND:**
- JUNCTION BOX
 - WATERPROOF
 - SPLIT RECEPTACLE
 - DRAIN PIPE
 - 600V CONDUIT
 - 120V CONDUIT
 - CLIENT SUPPLIED PORTABLE POWER CABLE
 - HEAT TRACE CABLE
 - 1φ MOTOR LOAD
 - 3φ MOTOR LOAD

- NOTES:**
1. REFER TO MUNICIPAL DRAWING C01 FOR THE EXACT LOCATION OF THE WELL PUMP, WELL PUMP SUPPLY LINE AND SUMP PIT.
 2. REFER TO THE CONTRACT ADMINISTRATOR DRAWINGS FOR THE EXACT LOCATIONS OF ALL THE RECEPTACLES.
 3. REFER TO CONTRACT ADMINISTRATOR DRAWINGS FOR EXACT LOCATIONS OF EQUIPMENT.
 4. GREY SHADED LINE WEIGHT DENOTES EQUIPMENT PROVIDED BY OTHERS OR EXISTING.
 5. REFER TO MECHANICAL DRAWING M01 FOR THE ROOM LAYOUT AND EXACT LOCATION OF EQUIPMENT.
 6. MOUNT JUNCTION BOX IN PLANTER, COORDINATE WITH LANDSCAPING.
 7. MOUNT DUPLEX RECEPTACLE IN GROUND. PROVIDE RECEPTACLE COVERS AS REQUIRED BY CODE. COORDINATE ALL RECEPTACLE LOCATIONS WITH CONTRACT ADMINISTRATOR.



NO.	YY/MM/DD	DESCRIPTION	DESIGN BY	DESIGN CHECK
1	16/09/27	ISSUED FOR CONSTRUCTION	DAL	AP
0	14/04/14	ISSUED FOR TENDER	DAL	AP

REVISIONS / ISSUE

CLIENT:

SCATLIFF+MILLER+MURRAY Inc.
 TEL: 204-622-4444 FAX: 204-622-4443
 6-30 WILKES AVENUE WINNIPEG, MB CANADA

PROJECT:
**PEGUIS PAVILION
 POND REDEVELOPMENT
 & LANDSCAPE RENOVATIONS**

DWG. DESCRIPTION:
**ELECTRICAL
 SITE PLAN**

DESIGN BY:	DATE (YY/MM/DD):
CLS	14/03/12
DESIGN CHECK:	DATE:
AP	14/04/11
DRAWN BY:	DATE:
CBW	14/03/19
DWG. CHECK:	DATE:
DAL	14/04/11

DWG. NO. 13-0109-001 E02



ENG. STAMP

REV: 1