

LUMINAIRE SCHEDULE							
TYPE	MANUFACTURER	CATALOGUE NUMBER	LAMPS	WATTS	LUMINAIRE STYLE	VOLTAGE	COMMENTS
A	COOPER METALUX	24EN-LD2-4500-UNV-LP835-CD-U	LED 3500K	38W	RECESSED TROFFER (LAY-IN)	120V	
B	COOPER PORTFOLIO	LD6A-10-D010TE-ERM6A-10-80-35 C/W 6LM1-LJ	LED 3500K	14.1W	RECESSED DOWNLIGHT	120V	
C	COOPER	4SNLED-LD4-46SL-LN-UNV-L835-CD-U	LED 3500K	41W	STRIP LIGHT	120V	
F	METALUX	FMLED16WH835PR	LED 3500K	22W	SURFACE MOUNT	120V	
G	TERON LIGHTING	VCY24-L18.0-120-277V-SLT-TE500-SM-35K	LED 3500K	18W	VANITY LIGHT	120V	
H	LUMEN PULSE	LOGP-HO-120-48-40K-WW-WAMH6-KC-NO	LED 4000K	61W	EXTERIOR SIGN LIGHT	120V	
J	LUMINIS	SYRIOS SQ 800	LED 4000K	18W	EXTERIOR WALL MOUNT	120V	

NOTES:  
 1. ALL LUMINAIRES, BALLASTS, LAMPS, ETC. TO BE CSA APPROVED.  
 2. ALL BALLASTS AND DRIVER CUTSHEETS MUST BE INCLUDED WITH EACH LUMINAIRE SHOP DRAWING.  
 3. PROVIDE ALL REQUIRED MOUNTING KITS/HARDWARE FOR ALL CEILING/WALL TYPES.  
 4. ELECTRICAL CONTRACTOR TO SUBMIT ENTIRE LIGHTING INSTALLATION FOR MANITOBA HYDRO POWER SMART REBATE PROGRAM ON BEHALF OF OWNER. ALL REBATES TO BE MADE PAYABLE TO OWNER.

EMERGENCY LIGHTING BATTERY BANK SCHEDULE						
TYPE	MANUFACTURER	CATALOGUE NUMBER	WATTAGE	CIRCUIT NUMBER	LOCATION	LAMPS
EBB-1	LUMACELL	RG12S72LD9ATCTVSR	72W	EXISTING AREA LIGHTING		2x5w LED
EBB-2	LUMACELL	RG12S100LD9ATCTVSR	100W	EXISTING AREA LIGHTING		2x5w LED
EBB-3	LUMACELL	LSC72W2LD9AT	72W	EXISTING AREA LIGHTING		2x5w LED

NOTES:  
 1. ALL WIRING TO BE IN EMT CONDUIT 21mm CONDUIT C/W MINIMUM #12 AWG Cu WIRING. CONFIRM WIRE SIZES WITH DISTANCES PER MANUFACTURER'S RECOMMENDATIONS.  
 2. ADJUST LIGHTING HEADS TO PROPERLY ILLUMINATE EGRESS ROUTE.  
 3. ALL REMOTE HEADS TO BE MANUFACTURED BY LUMACELL CAT NO. M0M2LD9.  
 4. ALL EXIT SIGN TO BE MANUFACTURED BY LUMACELL CAT NO. LS3WJ.  
 5. VSR MAY NOT BE REQUIRED FOR EVERY BATTERY PACK UNIT.

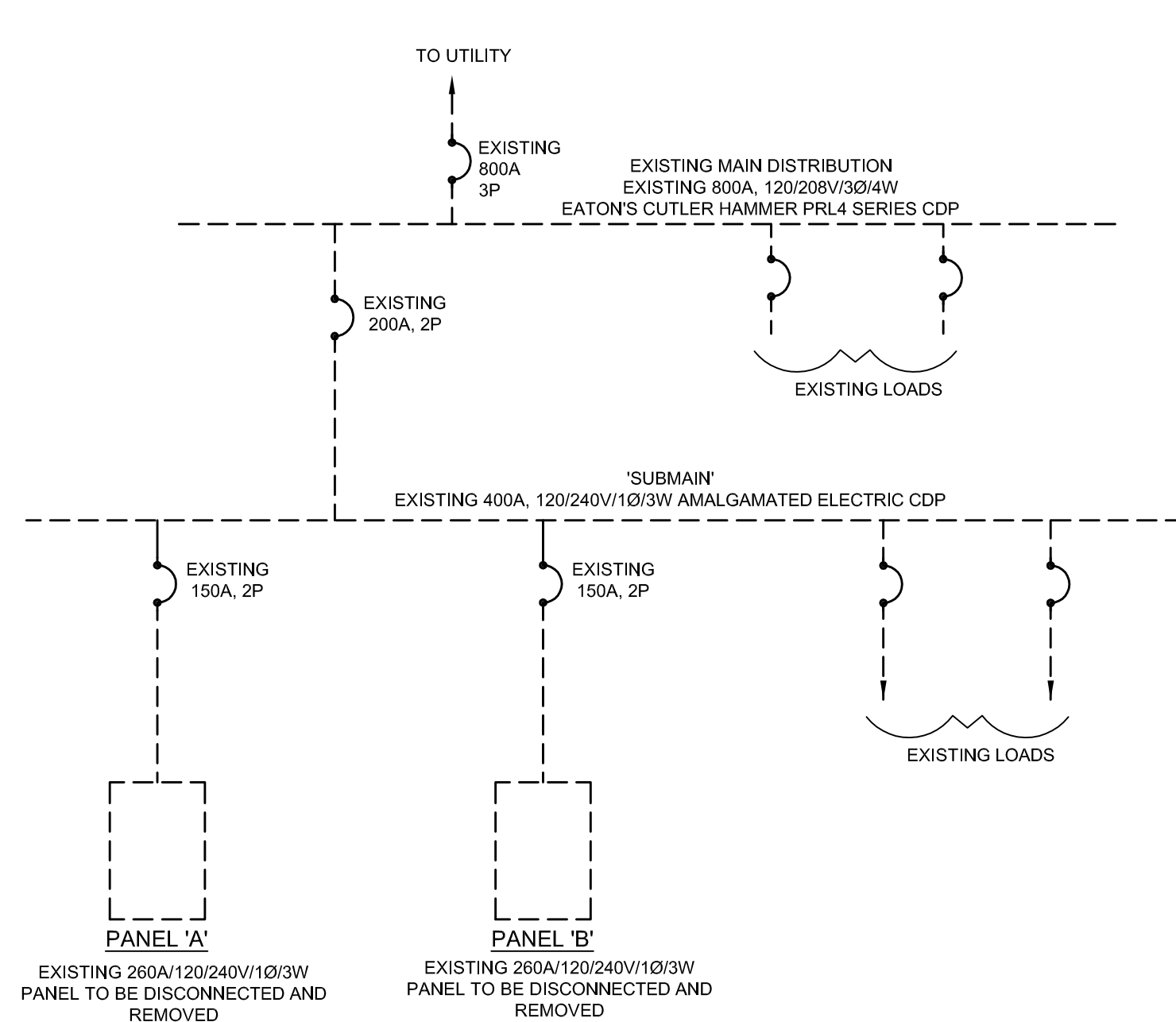
ELECTRIC BASEBOARD HEATER SCHEDULE								
TYPE	STYLE	MANUFACTURER	CATALOGUE NUMBER	FINISH	MOUNTING	HEATING ELEMENT WATTAGE	VOLTAGE	ADDITIONAL INFORMATION
EBBH-1	ELECTRIC BASEBOARD HEATER	OUELLET	ODBA0302-733	WHITE	WALL	300W	120V	

PANELBOARD 'A'									
ITEM	LOAD (kW)	OCB	C	C	ITEM	LOAD (kW)	OCB	C	C
EXISTING		15A	1	2	EXISTING		15A		
EXISTING		15A	3	4	EXISTING		15A		
EXISTING		15A	5	6	EXISTING		15A		
EXISTING		15A	7	8	EXISTING		15A		
EXISTING		15A	9	10	EXISTING		15A		
EXISTING		15A	11	12	EXISTING		15A		
EXISTING		15A	13	14	EXISTING		15A		
EXISTING		15A	15	16	EXISTING		15A		
EXISTING		30A/2P	17	18	EXISTING		15A		
EXISTING		15A	19	20	EXISTING		15A		
EXISTING		15A	21	22	EXISTING		15A		
EXISTING		15A	23	24	RECEPTACLE COMPUTER STATION	0.40	15A		
EXISTING		30A/2P	25	26	RECEPTACLE WORKROOM	0.40	15A		
EXISTING		15A	27	28	RECEPTACLE WORKROOM	0.40	15A		
EXISTING		15A	29	30	RECEPTACLE OFFICE	0.40	15A		
EXISTING		15A	31	32	RECEPTACLE LUNCH ROOM AND ACTUATOR	1.00	15A		
EXISTING		30A/2P	33	34	RECEPTACLE MICROWAVE	1.00	15A		
EXISTING		15A	35	36	RECEPTACLE COUNTERTOP	0.40	20A		
EXISTING		15A	37	38	RECEPTACLE COUNTERTOP	0.40	20A		
PRINTER	1.00	15A	39	40	RECEPTACLE FRIDGE	0.80	15A		
RECEPTACLE ADULTS AREA	0.60	15A	41	42	RECEPTACLE COMPUTER STATION	0.90	15A		
SPARE		15A	43	44	RECEPTACLE PUBLIC SPACE	0.60	15A		
SPARE		15A	45	46	MEZZANINE RECEPTACLE	0.60	15A		
			47	48	MEZZANINE RECEPTACLE	0.60	15A		
			49	50	MEZZANINE RECEPTACLE	0.60	15A		
			51	52	MEZZANINE RECEPTACLE	0.60	15A		
			53	54	MEZZANINE RECEPTACLE	0.60	15A		

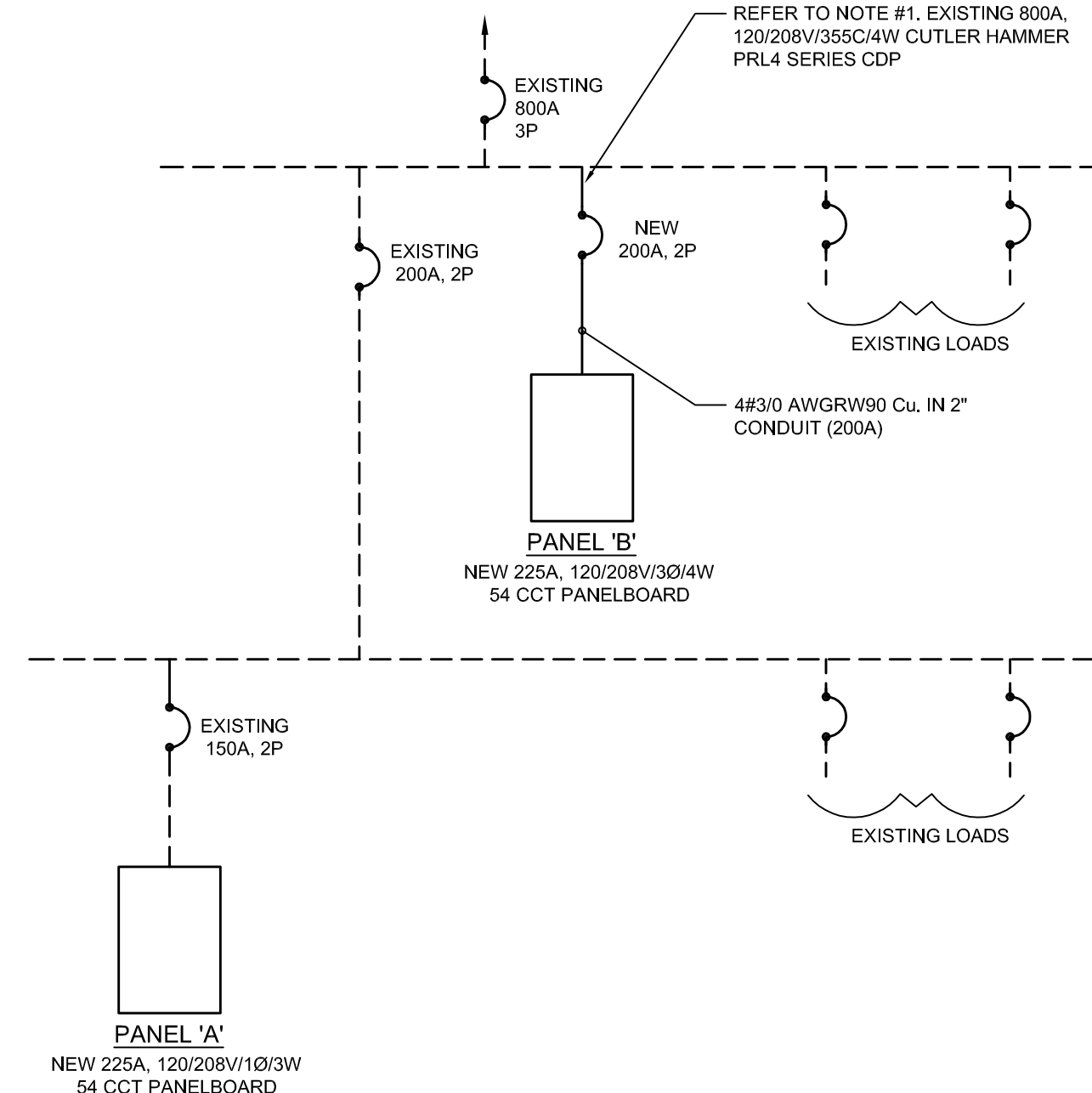
NOTES:  
 CONFIRM BREAKERS FOR EXISTING CIRCUITS PRIOR TO ORDERING NEW PANEL. MOUNTING: RECESSED RATING: 225A, 120/208V/1Ø/3W

PANELBOARD 'B'									
ITEM	LOAD (kW)	OCB	C	C	ITEM	LOAD (kW)	OCB	C	C
EXISTING		15A	1	2	EXISTING		15A		
EXISTING		15A	3	4	EXISTING		15A		
EXISTING		15A	5	6	EXISTING		15A		
EXISTING		15A	7	8	EXISTING		15A		
EXISTING		15A	9	10	EXISTING		15A		
EXISTING		15A	11	12	EXISTING		15A		
EXISTING		30A	13	14	EXISTING		15A		
EXISTING		15A	15	16	EXISTING		15A		
EXISTING		15A	17	18	EXISTING		15A		
EXISTING		15A	19	20	EXISTING		15A		
EXISTING		15A	21	22	EXISTING		15A		
EXISTING		15A	23	24	EXISTING		15A		
EXISTING		15A	25	26	EXISTING		15A		
EXISTING		15A/2P	27	28	RECEPTACLE COMPUTER STATION	0.40	15A		
			29	30	RECEPTACLE COMPUTER STATION	0.40	15A		
			31	32	RECEPTACLE COMPUTER STATION	0.40	15A		
			33	34	RECEPTACLE COMPUTER STATION	0.40	15A		
			35	36	RECEPTACLE COMPUTER STATION	0.40	15A		
			37	38	RECEPTACLE COMPUTER STATION	0.40	15A		
			39	40	RECEPTACLE STACKS AREA	0.80	15A		
			41	42	PROJECTOR	0.50	15A		
			43	44	EBBH-1	0.25	15A		
			45	46	RECEPTACLE BASEMENT	0.60	15A		
			47	48	RECEPTACLE BASEMENT	0.40	15A		
DOOR ACTUATOR	0.60	15A	49	50	RECEPTACLE BASEMENT	0.40	15A		
DOOR ACTUATOR	0.60	15A	51	52	EXTERIOR LIGHTING	0.25	15A		
EMERGENCY CALL SYSTEM	0.10	15A	53	54	SPARE		15A		

NOTES:  
 CONFIRM BREAKERS FOR EXISTING CIRCUITS PRIOR TO ORDERING NEW PANEL. MOUNTING: RECESSED RATING: 225A, 120/208V/3Ø/4W



1 EXISTING SINGLE LINE DISTRIBUTION DIAGRAM  
 E-16 NTS



2 NEW SINGLE LINE DISTRIBUTION DIAGRAM  
 E-16 NTS

NOTE:  
 1. PROVIDE ALL REQUIRED MODIFICATIONS AND HARDWARE TO EXISTING DISTRIBUTION.

