

1+200 1+220 1+240 1+260 1+280

NOTE: CHAINAGES SHOWN ARE ALONG CL OF PROPOSED PIPE

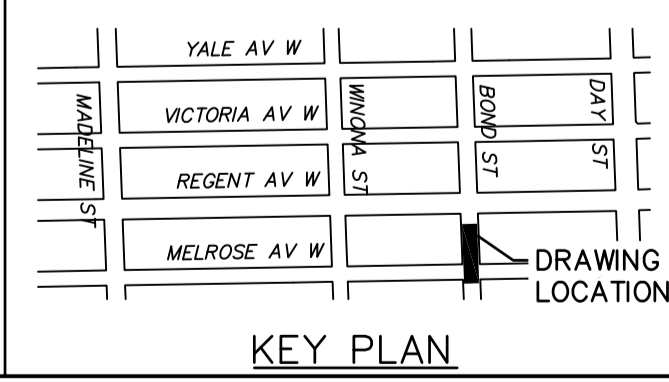
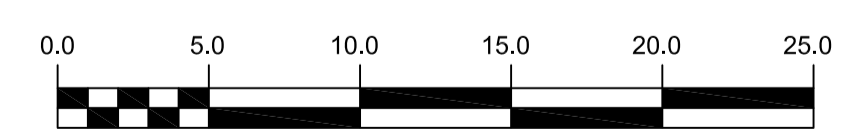
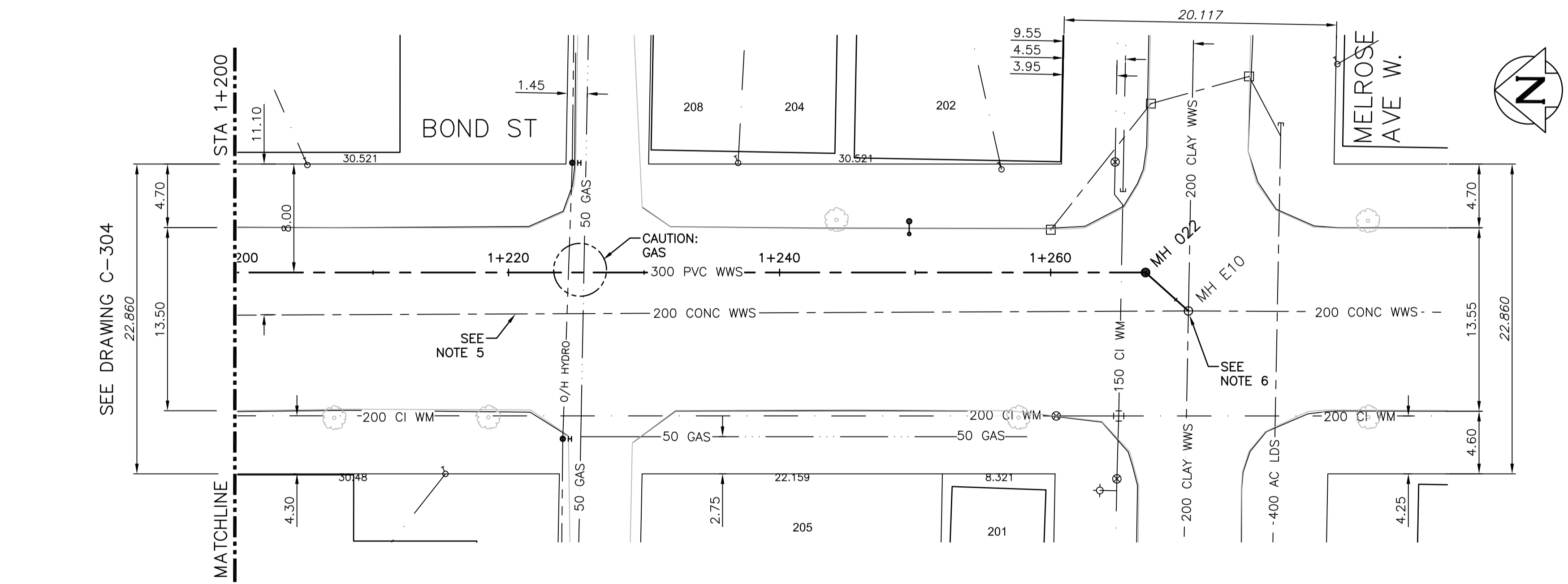
**WARNING**  
 IF POWER EQUIPMENT OR EXPLOSIVES ARE TO BE USED FOR EXCAVATION ON THIS PROJECT THE CONTRACTOR MUST:  
 1) NOTIFY THE GAS COMPANY OF THE PROPOSED LOCATION OF EXCAVATION.  
 2) TAKE PRECAUTION TO AVOID DAMAGE TO GAS COMPANY INSTALLATIONS.  
 SEE PROVINCIAL REGULATION 210/72 FOR DETAILS

- CONSTRUCTION NOTES:**
- SEWER AND WATER SERVICES SHOWN ON DRAWING ARE APPROXIMATE ONLY.
  - LOCATION OF ALL SEWER AND WATER LINES TO BE CONFIRMED IN FIELD.
  - INSTALL NEW SEWER BY TRENCHLESS METHODS, UNLESS OTHERWISE NOTED.
  - FRONT ACCESS TO ALL BOND STREET PROPERTIES TO BE MAINTAINED AT ALL TIMES DURING CONSTRUCTION PERIOD.
  - EXISTING 200 WWS PIPE TO BE ABANDONED AFTER ALL LIVE CONNECTIONS DIVERTED TO NEW 300 PVC WWS AS PER SPECIFICATION.
  - EXISTING OUTGOING 200 PIPE TO BE ABANDONED AFTER ALL LIVE CONNECTIONS DIVERTED TO NEW 300 PVC WWS AS PER SPECIFICATION.
  - ALL SERVICES SHALL BE RENEWED TO PROPERTY LINE.

SEWER JUNCTION INFORMATION FROM SEWER VIDEO INSPECTION		
DISTANCE FROM MH ID E10	DIAMETER	CLOCK
4.9	100	2
11.3	150	3
14.8	150	2
19.4	100	10
39.3	100	11
40.8	150	2
50.6	100	2
56.8	150	10
60.5	150	9
65.7	150	2
75.8	150	10
86.7	150	11

CAPPED

CAPPED



200 WM	WATERMAIN	200 WM	SL, HYDRO	150 WM	WATERMAIN	150 WM
○	HYDRANT	○	MTS	+	HYDRANT	+
⊕	VALVE	⊕	TRAFFIC SIGNALS	X	VALVE	X
525 LDS	LAND DRAINAGE SEWER	525 LDS	50 GAS	300 LOS	LAND DRAINAGE SEWER	300 LOS
375 WWS	WASTEWATER SEWER	375 WWS	SURVEY BAR	250 WWS	WASTEWATER SEWER	250 WWS
○	MANHOLE	●	FENCE	X	○	PROFILE
▽	CATCH BASIN	▽	POLE - HYDRO, MTS	○	○	GROUND ABOVE PIPE
□	CURB INLET	■	CURB STOP	♂		
+	JUNCTIONS	+	GUY ANCHOR			
⌒	CULVERT	⌒	LIGHT STANDARD			
⊕	ANODE	⊕	TREE			
---	EXISTING	---	LEGEND-PLAN	---	---	---
---	LEGEND-PLAN	---	PROPOSED	---	---	---

**LOCATION APPROVED UNDERGROUND STRUCTURES**

DATE: \_\_\_\_\_

NOTE: LOCATION OF UNDERGROUND STRUCTURES AS SHOWN ARE BASED ON THE BEST INFORMATION AVAILABLE BUT NO GUARANTEE IS GIVEN THAT ALL EXISTING UTILITIES ARE SHOWN OR THAT THE GIVEN LOCATIONS ARE EXACT. CONFIRMATION OF EXISTENCE AND EXACT LOCATION OF ALL SERVICES MUST BE OBTAINED FROM THE INDIVIDUAL UTILITIES BEFORE PROCEEDING WITH CONSTRUCTION.

DESIGNED BY	MAF	CHECKED BY	MD
DRAWN BY	JBC	APPROVED BY	ES
SCALE:	HORIZONTAL 1:250	RELEASED FOR CONSTRUCTION	KZ
DATE	2016-09-15	DATE	2016-09-15



**THE CITY OF WINNIPEG**  
 WATER AND WASTE DEPARTMENT  
 ENGINEERING DIVISION

TRANSCONA SEWER RELIEF WORKS  
 CONTRACT NO. 2  
 BOND STREET  
 FROM STA 1+200 TO  
 MELROSE AVE W.

SHEET 16 OF 22  
 CITY DRAWING NUMBER  
 LD-7914