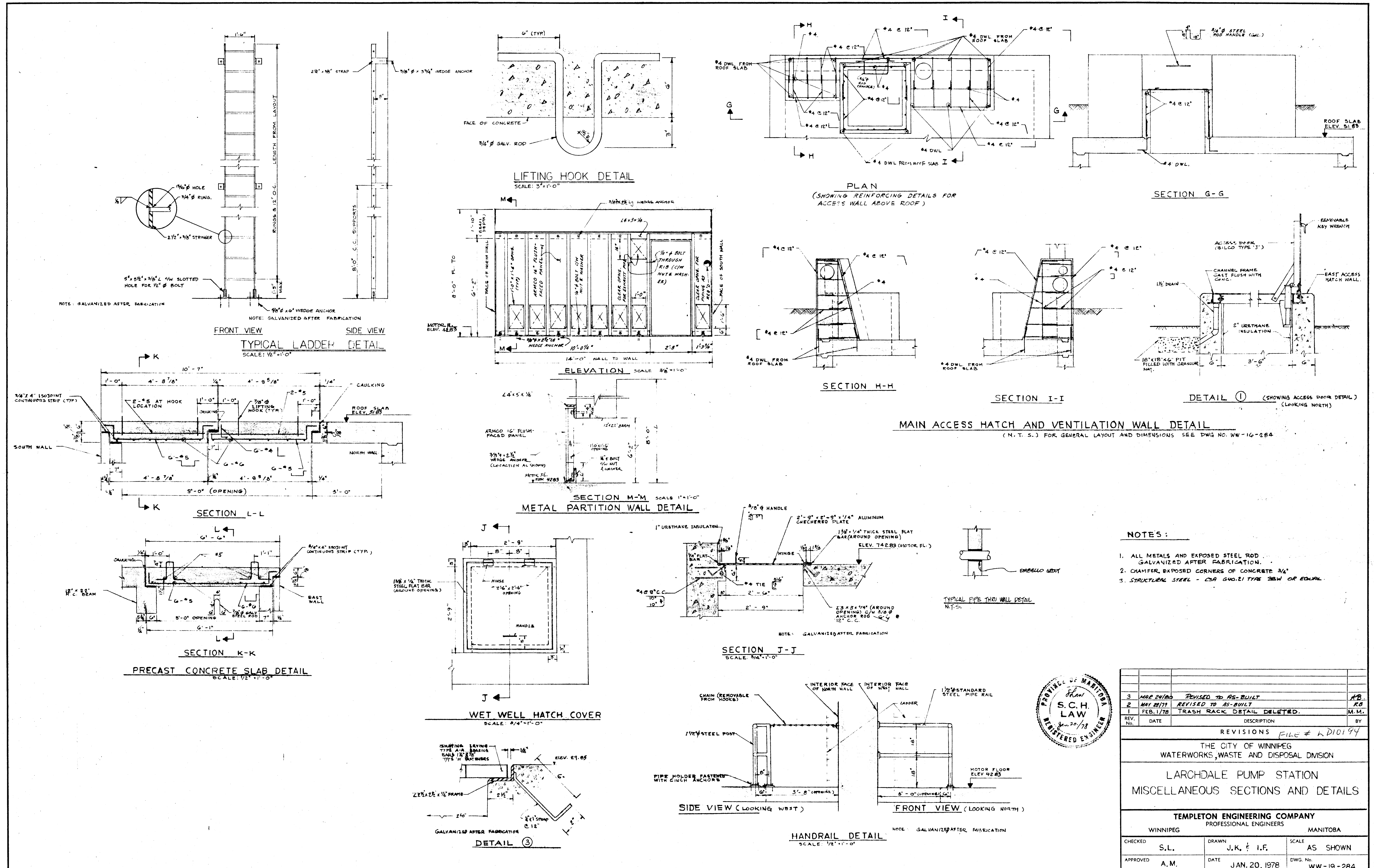


FILE # LD10194

REF. or DRAWING No. LD429

DETAILS



- NOTES:**
1. ALL METALS AND EXPOSED STEEL ROD GALVANIZED AFTER FABRICATION.
 2. CHAMFER EXPOSED CORNERS OF CONCRETE 3/4"
 3. STRUCTURAL STEEL - CSA G40.21 TYPE 35W OF EQUAL.



REV. NO.	DATE	DESCRIPTION	BY
3	MAY 24/80	REVISED TO AS-BUILT	RB
2	MAY 20/79	REVISED TO AS-BUILT	RB
1	FEB. 1/78	TRASH RACK DETAIL DELETED.	M.M.

REVISIONS FILE # LD10194

THE CITY OF WINNIPEG
WATERWORKS, WASTE AND DISPOSAL DIVISION

LARCHDALE PUMP STATION
MISCELLANEOUS SECTIONS AND DETAILS

TEMPLETON ENGINEERING COMPANY
PROFESSIONAL ENGINEERS
WINNIPEG MANITOBA

CHECKED	S.L.	DRAWN	J.K. & I.F.	SCALE	AS SHOWN
APPROVED	A.M.	DATE	JAN. 20, 1978	DWG. No.	WW-19-284