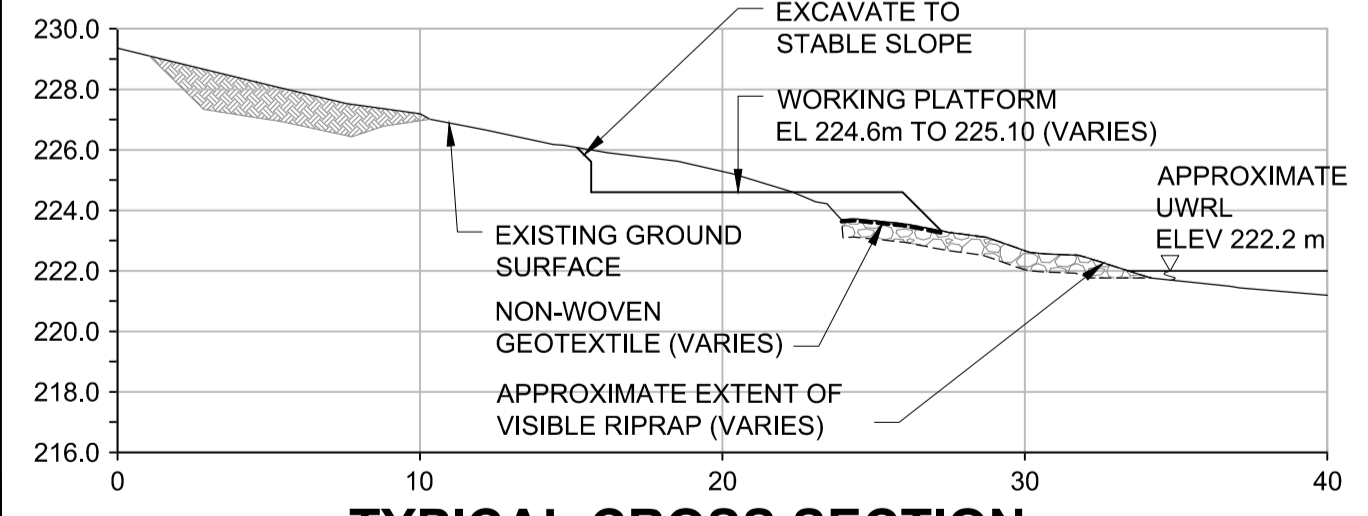
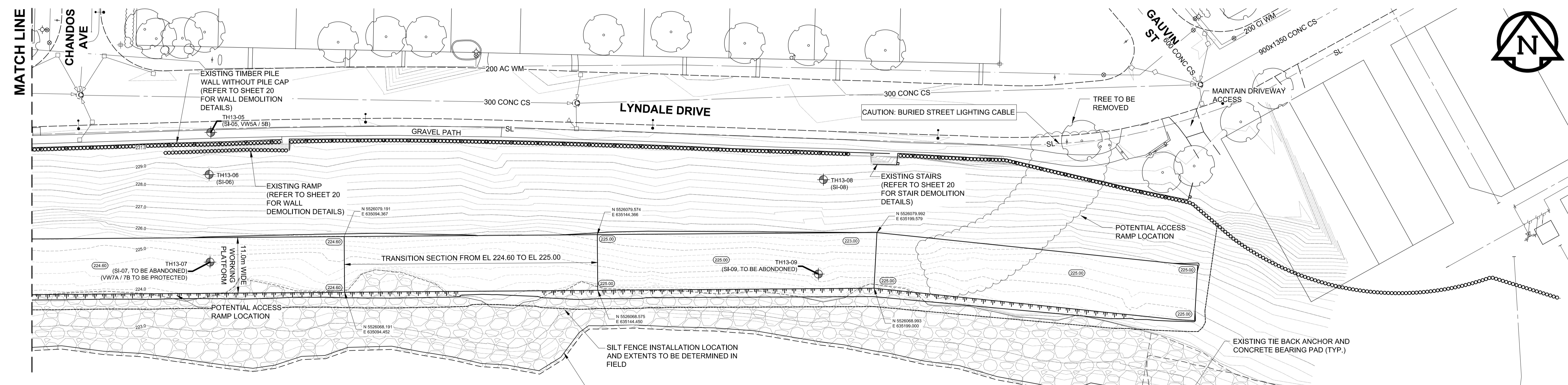
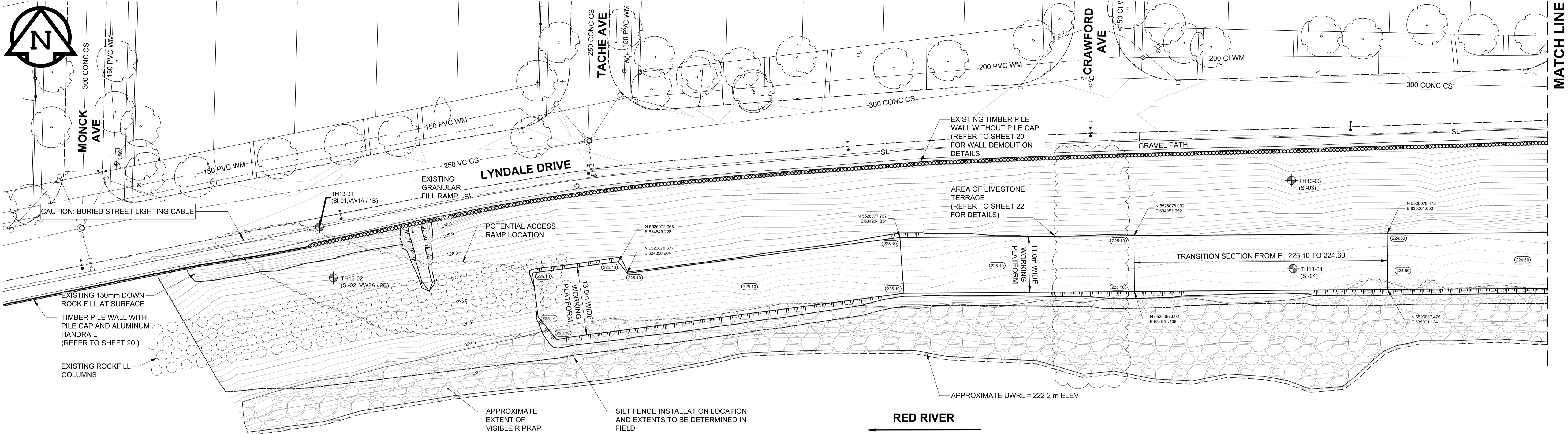


2:\Projects\0015 City of Winnipeg\0015 014 00 Lyndale Monck to Gauvin\3.4 CAD\3.4.3 Working Folder\0015 014 00 SHT07.dwg  
 Last Saved: 9/28/2016 2:10 PM by drewes  
 Plotted: 9/28/2016 2:10 PM by Daniel Neves  
 ISO A1 - 594mm x 841mm



**NOTE:**

1. UWRL (UNREGULATED WINTER RIVER LEVEL) = APPROXIMATELY 222.2 m ELEV.
2. EXISTING GEOTECHNICAL INSTRUMENTATION CONSISTING OF SLOPE INCLINOMETER (SI) AND VIBRATING-WIRE PIEZOMETERS (VW) TO BE PROTECTED UNLESS OTHERWISE NOTED.

	GAS		MANHOLE
	MTS HANDWELL/PEDESTAL		CATCH BASIN/CATCH PIT
	HYDRO HANDWELL/CABINET		CURB INLET WITH BOX
	CATV/FIBRE OPTIC		TREE
	TRAFFIC SIGNALS/PIT		TEST HOLE
	LAND DRAINAGE SEWER		PROPERTY LINE
	SANITARY/COMBINED SEWER		SURVEY BAR
	CB LEAD/SSP/DCP		FENCE
	WATERMAIN		BOC/EDGE OF PAVEMENT
	SUBDRAIN		ELEVATION (33.333)
	DITCH		TRAFFIC SIGN
	EXISTING		NEW

**LOCATION APPROVED UNDERGROUND STRUCTURES**

DATE: \_\_\_\_\_

NOTE: LOCATION OF UNDERGROUND STRUCTURES AS SHOWN ARE BASED ON THE BEST INFORMATION AVAILABLE BUT NO GUARANTEE IS GIVEN THAT ALL EXISTING UTILITIES ARE SHOWN OR THAT THE GIVEN LOCATIONS ARE EXACT. CONFIRMATION OF EXISTENCE AND EXACT LOCATION OF ALL SERVICES MUST BE OBTAINED FROM THE INDIVIDUAL UTILITIES BEFORE PROCEEDING WITH CONSTRUCTION.

BM 34-007	S.W. Cor. Tache Ave. and Lyndale Dr. Toll. In E. Conc. Pile 11.9 W. of E.L. of Tache Ave. & 2.7 S. of S. curb of Pavl on Lyndale Dr.
ELEV 231.455 m	
C	ISSUED FOR TENDER 16/09/29 MVH
B	ISSUED FOR 90% REVIEW 16/09/09 MVH
A	ISSUED FOR 75% REVIEW 16/08/17 MVH
No.	REVISIONS YY/MM/DD BY DATE

DESIGNED BY	MVH	CHECKED BY	KMS
DRAWN BY	BIT	APPROVED BY	
		RELEASED FOR CONSTRUCTION	
HOR SCALE	AS NOTED		
VERT SCALE			
DATE	16/09/29	DATE	

PROFESSIONAL'S SEAL

PROVINCE OF MANITOBA

**M. J. VAN HELDEN**  
Member 24729

REGISTERED PROFESSIONAL ENGINEER

CONSULTANT FILE NAME  
0015 014 00 SHT07.dwg

**METRIC**  
WHOLE NUMBERS INDICATE MILLIMETRES  
DECIMALIZED NUMBERS INDICATE METRES

**THE CITY OF WINNIPEG**  
PUBLIC WORKS DEPARTMENT  
ENGINEERING DIVISION

**LYNDALE DRIVE RIVERBANK STABILIZATION AND ASSOCIATED WORKS**  
MONCK AVENUE TO GAUVIN STREET  
TEMPORARY ACCESS AND WORK PLATFORM

CITY DRAWING NUMBER: RW751-2016-007  
SHEET 7 OF 32  
DRAWING No. REV 7 C

BID OPPORTUNITY No. 721-2016

**APCGM**  
Certificate of Authorization  
Trek Geotechnical Inc.  
No. 4877 Date: \_\_\_\_\_