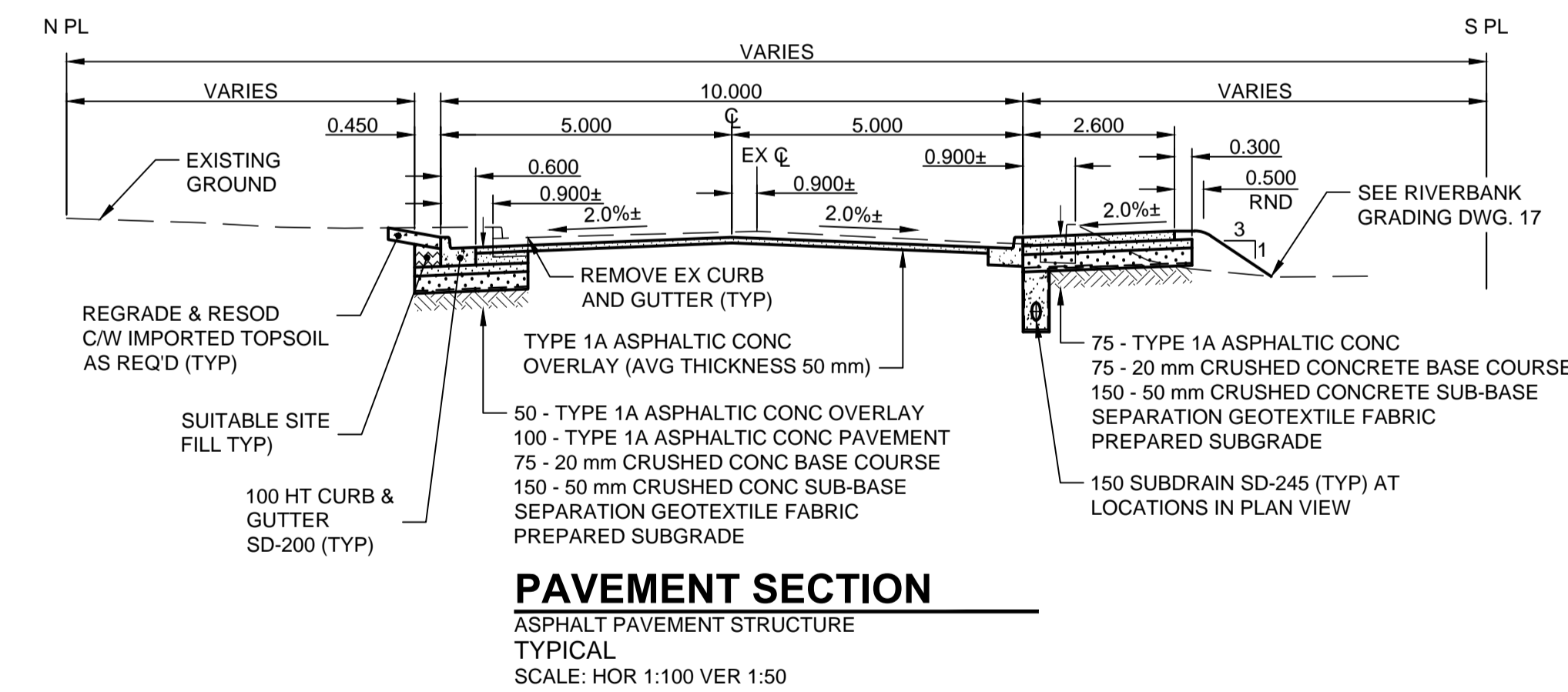
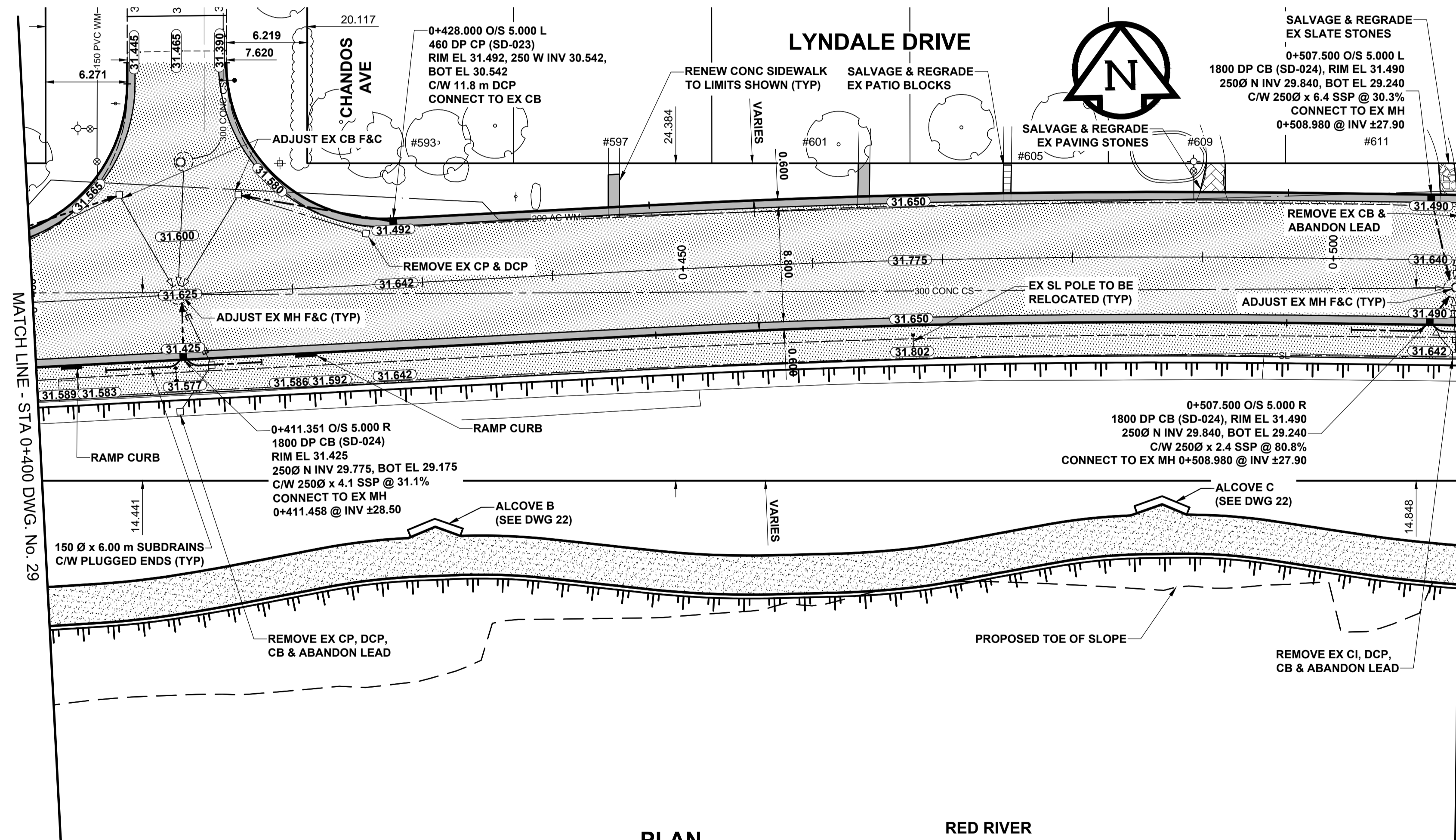
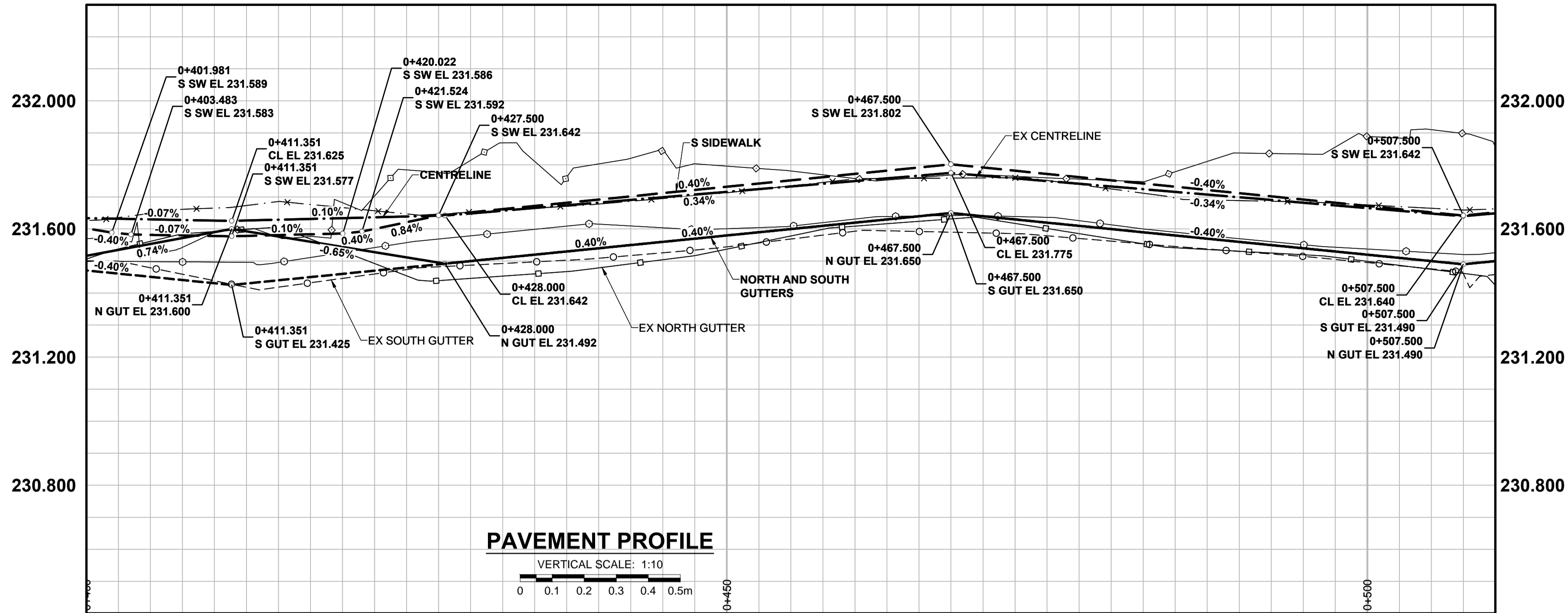


CHAINAGE ALONG PROPOSED PAVEMENT



- NOTES**
1. ADJUST MH AND CB RIMS TO NEW GRADES.
  2. CONTRACTOR TO REGRADE/RENEW EXST PRIVATE SIDEWALKS TO LIMITS AS SHOWN. SIDEWALKS TO BE RENEWED WITH CONCRETE UNLESS NOTED OTHERWISE.
  3. CONTRACTOR TO TAKE PRECAUTIONARY STEPS AS OUTLINED IN THE SPECIFICATIONS TO PROTECT EXISTING TREES WITHIN THE LIMITS OF CONSTRUCTION FROM DAMAGE FROM CONSTRUCTION ACTIVITIES.
  4. MODIFIED BARRIER CURB TO BE CONSTRUCTED AT ALL INTERSECTION RADII, BACK LANE RADII AND BULLNOSES.
  5. CONTRACTOR TO CONFIRM THE LOCATION OF ALL UTILITIES/SERVICES IN THE FIELD PRIOR TO CONSTRUCTION.
  6. ADD 200.000m TO ABBREVIATED ELEVATIONS TO OBTAIN GEODETIC ELEVATIONS.
  7. CB SD-024 OFFSETS ARE DIMENSIONED TO BOC. CB SD-025 OFFSETS ARE DIMENSIONED O/C.
  8. ALL DIMENSIONS TO BACK OF CURB.

**METRIC**  
WHOLE NUMBERS INDICATE MILLIMETRES  
DECIMAL NUMBERS INDICATE METRES

	GAS		MANHOLE		CONCRETE PAVEMENT
	MTS HANDWELL/PEDESTAL		CATCH BASIN/CATCH PIT		CONC SIDEWALK/MEDIAN
	HYDRO HANDWELL/CABINET		CURB INLET WITH BOX		ASPHALT PAVEMENT
	CATV/FIBRE OPTIC		TREE		PAVING STONE
	TRAFFIC SIGNALS/PIT		TEST HOLE		GRAVEL
	LAND DRAINAGE SEWER		PROPERTY LINE		RAMP CURB
	SANITARY/COMBINED SEWER		SURVEY BAR		PLANING/REMOVAL
	CB LEAD/SSP/DCP		FENCE		
	WATERMAIN		BOC/EDGE OF PAVEMENT		
	SUBDRAIN		ELEVATION (33.333)		
	DITCH		TRAFFIC SIGN		
	EXISTING		LEGEND - PLAN		EXISTING
	NEW		LEGEND - PLAN		NEW

**LOCATION APPROVED**  
UNDERGROUND STRUCTURES

DATE: \_\_\_\_\_

**NOTE:**  
LOCATION OF UNDERGROUND STRUCTURES AS SHOWN ARE BASED ON THE BEST INFORMATION AVAILABLE BUT NO GUARANTEE IS GIVEN THAT ALL EXISTING UTILITIES ARE SHOWN OR THAT THE GIVEN LOCATIONS ARE EXACT. CONFIRMATION OF EXISTENCE AND EXACT LOCATION OF ALL SERVICES MUST BE OBTAINED FROM THE INDIVIDUAL UTILITIES BEFORE PROCEEDING WITH CONSTRUCTION.

BM 34-004	ELEV 229.873m
C	ISSUED FOR TENDER 16/09/29 JGK
B	ISSUED FOR FINAL REVIEW 16/09/13 JGK
A	ISSUED FOR 75% REVIEW 16/08/17 JGK
No.	REVISIONS

<b>MORRISON HERSHFIELD</b>	
DESIGNED BY	JGK
CHECKED BY	RPB
DRAWN BY	DID
APPROVED BY	BWB
HOR SCALE	1:250
VERT SCALE	1:10
RELEASED FOR CONSTRUCTION	DATE 16/09/06

PROFESSIONAL'S SEAL  
PROVINCE OF MANITOBA  
**J.G. KENNEDY**  
Member  
22326  
REGISTERED PROFESSIONAL ENGINEER

CONSULTANT FILE NAME  
5160047-Lyndale-PP-30.dwg

**THE CITY OF WINNIPEG**  
PUBLIC WORKS DEPARTMENT  
ENGINEERING DIVISION

**LYNDALE DRIVE RIVERBANK STABILIZATION AND ASSOCIATED WORKS**  
MONCK AVENUE TO GAUVIN STREET  
ROAD WORKS  
HORIZONTAL AND VERTICAL ALIGNMENT  
STA 0+400 TO STA 0+510

CITY DRAWING NUMBER: RW751-2016-30  
SHEET 30 OF 32  
DRAWING No. 30 REV C

BID OPPORTUNITY No. 721-2016