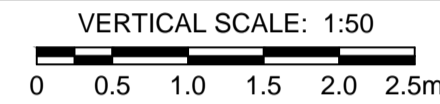


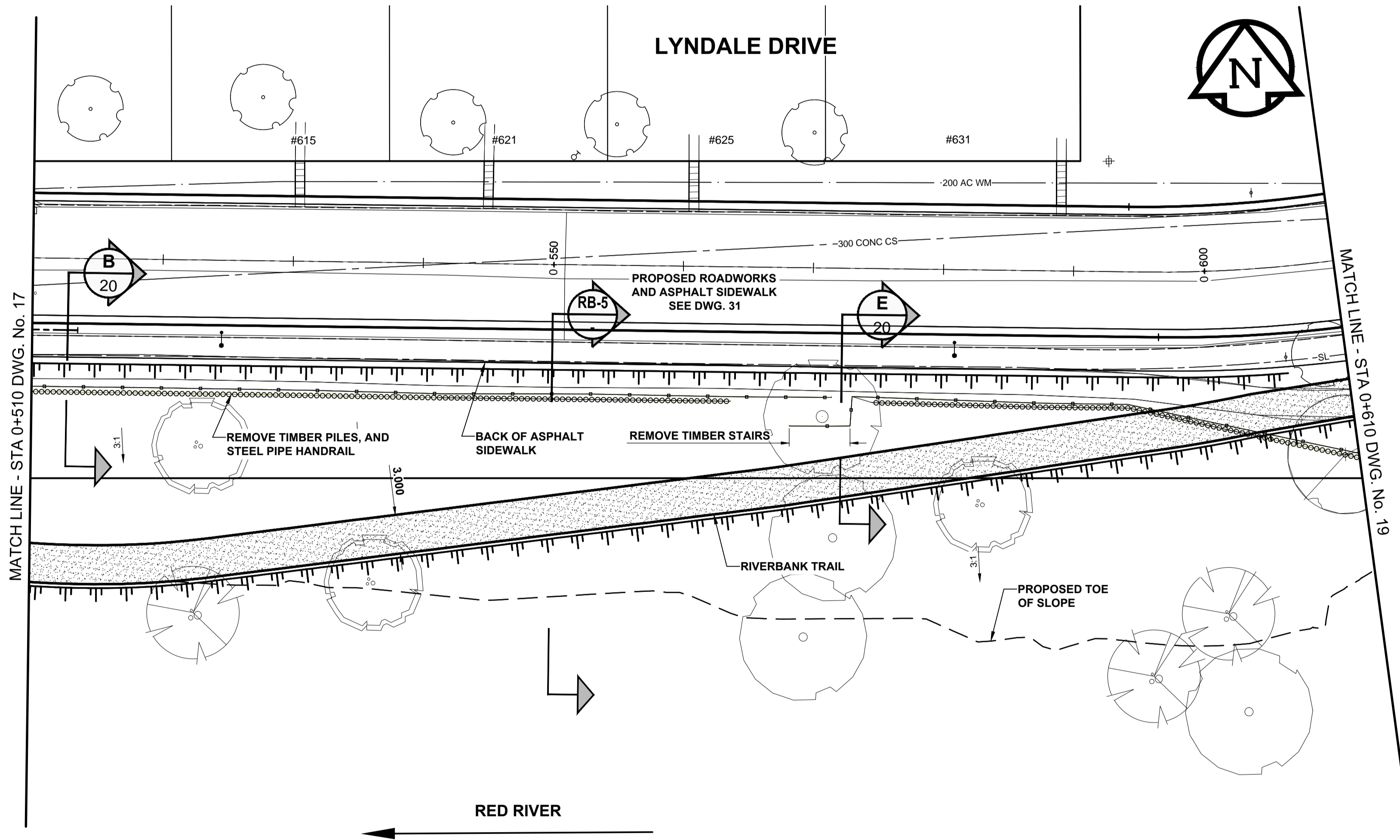
RIVERBANK TRAIL PROFILE



CHAINAGE ALONG PROPOSED PAVEMENT

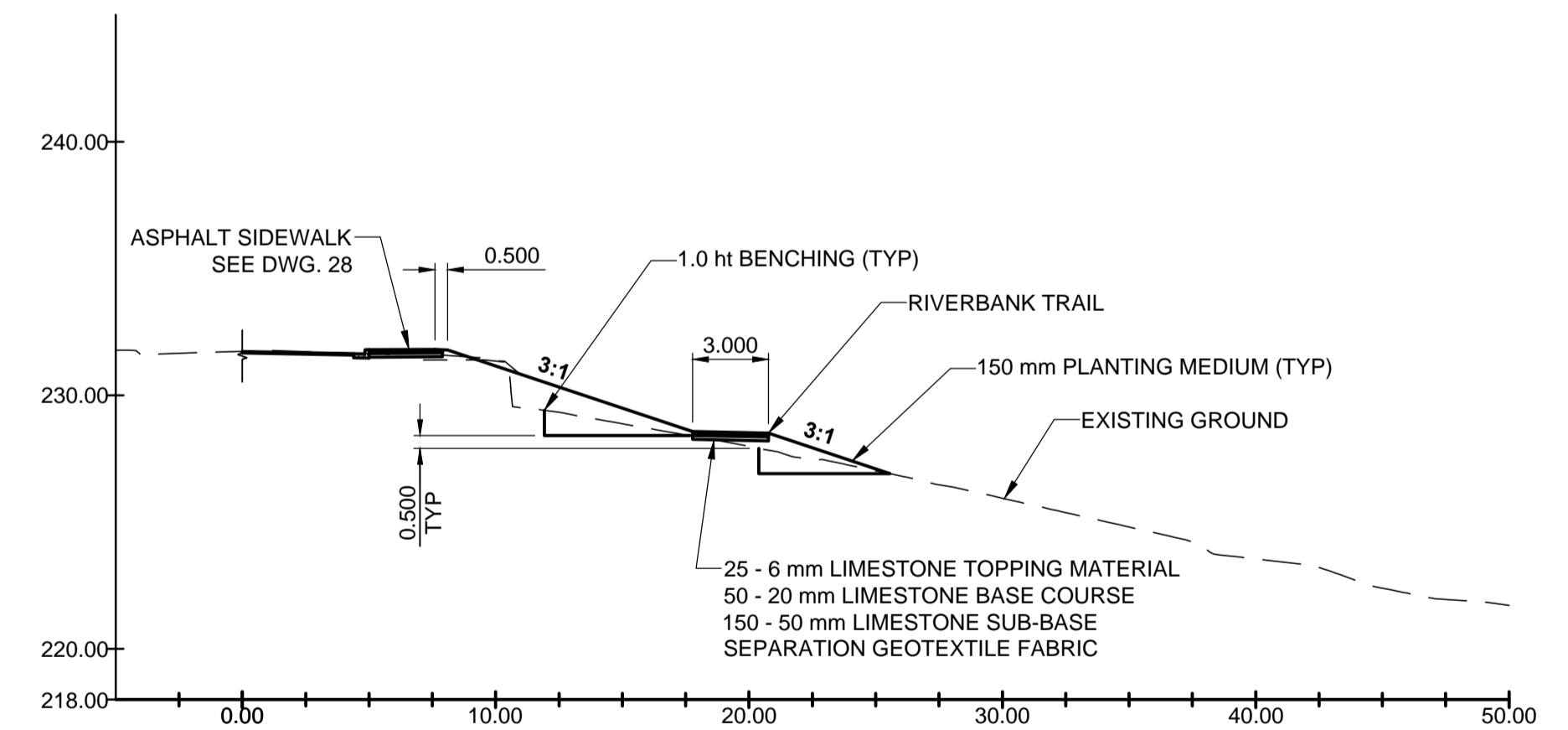
PLANT SPECIFICATION LIST

Symbol	Quantity	Botanical / Common Name	Size / Remarks
Deciduous Trees			
	11	<i>Acer negundo</i> / Manitoba Maple	60mm cal., 3.7 to 4.0m ht., 11 major branches in well formed head 2.0m above grade, B&B or tree mover, wire basket. Double stake.
	9	<i>Ulmus Americana</i> / American Elm	60mm cal., 3.7 to 4.0m ht., 11 major branches in well formed head 2.0m above grade, B&B or tree mover, wire basket. Double stake.
	8	<i>Tilia americana</i> / Basswood	Multi-stem, 3.7 to 4.0m ht., 11 major branches in well formed head 2.0m above grade, B&B or tree mover, wire basket. Double stake.
	11	<i>Populus deltoides</i> / Cottonwood (male - seedless)	60mm cal., 3.7 to 4.0m ht., 11 major branches in well formed head 2.0m above grade, B&B or tree mover, wire basket. Double stake.
	8	<i>Salix amygdaloides</i> 'Andersson' / Peachleaf Willow	Multi-stem, 3.7 to 4.0m ht., 11 major branches in well formed head 2.0m above grade, B&B or tree mover, wire basket. Double stake.



PLAN

SCALE: 1:250



RB-5 RIVERBANK TRAIL SECTION

GRAVEL STRUCTURE STATION 0+550.000 SCALE: HOR 1:250 VER 1:250

METRIC WHOLE NUMBERS INDICATE MILLIMETRES DECIMALIZED NUMBERS INDICATE METRES

---	GAS	○	MANHOLE	●	CONCRETE PAVEMENT	□	LOCATION APPROVED UNDERGROUND STRUCTURES	BM 34-004 ELEV 229.873m
---○---	MTS HANDWELL/PEDESTAL	□	CATCH BASIN/CATCH PIT	■	CONC SIDEWALK/MEDIAN	□	DATE	
---○---	HYDRO HANDWELL/CABINET	△	CURB INLET WITH BOX	▲	ASPHALT PAVEMENT	□	DATE	
---	CATV/FIBRE OPTIC	○	TREE	○	PAVING STONE	□	DATE	
---	TRAFFIC SIGNALS/PIT	⊕	TEST HOLE	⊕	GRAVEL	□	DATE	
---	LAND DRAINAGE SEWER	---	PROPERTY LINE	---	RAMP CURB	---	DATE	
---	SANITARY/COMBINED SEWER	---	SURVEY BAR	---	PLANING/REMOVAL	---	DATE	
---	CB LEAD/SSP/DCP	---	FENCE	---	---	---	DATE	
---	WATERMAIN	---	BOC/EDGE OF PAVEMENT	---	---	---	DATE	
---	SUBDRAIN	---	ELEVATION (33.333)	---	---	---	DATE	
---	DITCH	---	TRAFFIC SIGN	---	---	---	DATE	
---	EXISTING	---	LEGEND - PLAN	---	---	---	DATE	
---	NEW	---	EXISTING	---	---	---	DATE	

LOCATION APPROVED UNDERGROUND STRUCTURES

SUPR. U/G STRUCTURES COMMITTEE

NOTE: LOCATION OF UNDERGROUND STRUCTURES AS SHOWN ARE BASED ON THE BEST INFORMATION AVAILABLE BUT NO GUARANTEE IS GIVEN THAT ALL EXISTING UTILITIES ARE SHOWN OR THAT THE GIVEN LOCATIONS ARE EXACT. CONFIRMATION OF EXISTENCE AND EXACT LOCATION OF ALL SERVICES MUST BE OBTAINED FROM THE INDIVIDUAL UTILITIES BEFORE PROCEEDING WITH CONSTRUCTION.

DESIGNED BY	JGK	CHECKED BY	MVH
DRAWN BY	DID	APPROVED BY	BWB
BY		RELEASED FOR CONSTRUCTION	
DATE	16/09/06	DATE	
NO. REVISIONS	YYMMDD	BY	

PROFESSIONAL'S SEAL
PROVINCE OF MANITOBA
REGISTERED PROFESSIONAL ENGINEER
J.G. KENNEDY
Member
22326
CONSULTANT FILE NAME
5160047-Lyndale-PP-18.dwg

THE CITY OF WINNIPEG
PUBLIC WORKS DEPARTMENT
ENGINEERING DIVISION

LYNDALE DRIVE RIVERBANK STABILIZATION AND ASSOCIATED WORKS
MONCK AVENUE TO GAUVIN STREET
RIVERBANK GRADING AND TRAIL
STA 0+510 TO STA 0+610

CITY DRAWING NUMBER: RW751-2016-18
SHEET 18 OF 32
DRAWING No. 18
REV C

BID OPPORTUNITY No. 721-2016