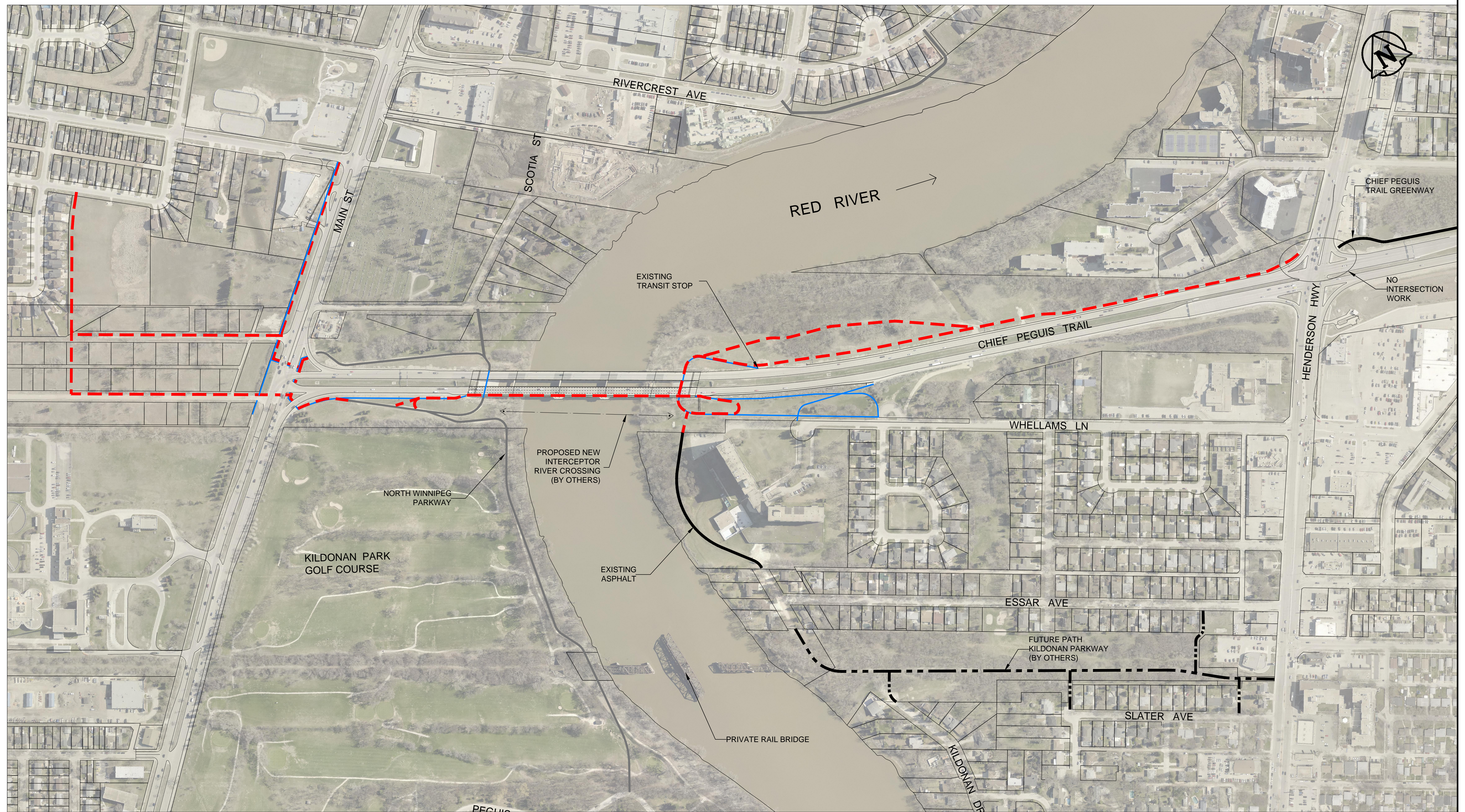


APPENDIX B – T-3409: CHIEF PEGUIS GREENWAY EXTENSION – CONCEPTUAL DESIGN OF MULTI-USE PATH

V:\TRANSPORTATION PLANNING DRAFTING\01 - T\FINAL\T-3400\T-3409_CHIEF PEG GREENWAY EXT.DWG



LEGEND

- POSSIBLE PATH
- EXISTING GRAVEL PATH
- EXISTING ASPHALT PATH
- EXISTING SIDEWALK
- FUTURE PATH BY OTHERS

PRELIMINARY

NOT TO BE USED FOR
CONSTRUCTION



THE CITY OF WINNIPEG
PUBLIC WORKS DEPARTMENT
TRANSPORTATION DIVISION

Chief Peguis Greenway Extension

From Murray Ave to Henderson Hwy
Conceptual Design of Multi-use Path

SHEET OF
1 1

CITY DRAWING NUMBER
T-3409