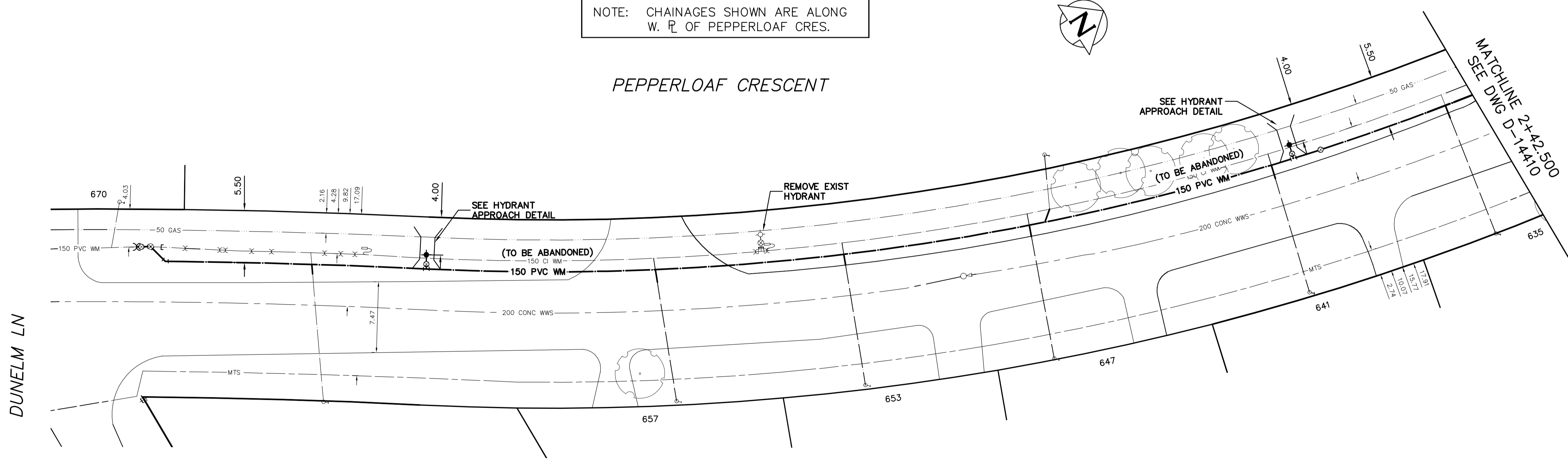


NOTE: CHAINAGES SHOWN ARE ALONG W. R. OF PEPPERLOAF CRES.

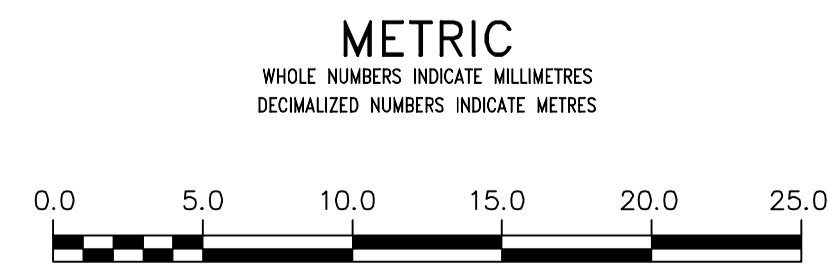
PEPPERLOAF CRESCENT



FOR INDEX SEE D-14403

FOR WATER SERVICE TABLE SEE D-14408

NOTE: ALL VALVES TO BE INSTALLED COUNTERCLOCKWISE TO CLOSE



**WARNING**  
IF POWER EQUIPMENT OR EXPLOSIVES ARE TO BE USED FOR EXCAVATION ON THIS PROJECT THE CONTRACTOR MUST:  
1) NOTIFY THE GAS COMPANY OF THE PROPOSED LOCATION OF EXCAVATION.  
2) TAKE PRECAUTION TO AVOID DAMAGE TO GAS COMPANY INSTALLATIONS.  
SEE PROVINCIAL REGULATION 210/72 FOR DETAILS

**LOCATION APPROVED UNDERGROUND STRUCTURES**  
SUPV. U/G STRUCTURES COMMITTEE DATE  
NOTE: LOCATION OF UNDERGROUND STRUCTURES AS SHOWN ARE BASED ON THE BEST INFORMATION AVAILABLE BUT NO GUARANTEE IS GIVEN THAT ALL EXISTING UTILITIES ARE SHOWN OR THAT THE GIVEN LOCATIONS ARE EXACT. CONFIRMATION OF EXISTENCE AND EXACT LOCATION OF ALL SERVICES MUST BE OBTAINED FROM THE INDIVIDUAL UTILITIES BEFORE PROCEEDING WITH CONSTRUCTION.

NO.	REVISIONS	DATE	BY

DESIGNED BY	ML	CHECKED BY	SC
DRAWN BY	RJ	APPROVED BY	KZ
SCALE:	HORIZONTAL 1:250 VERTICAL 1:50		
DATE	2016 08 09	DATE	2016 07 29
KAS ZUREK			
PLOT DATE: 2016 08 09			

ENGINEER'S SEAL  
ORIGINAL SIGNED BY S.J.R. COURNOYER 16/07/29  
CONSULTANT DRAWING NUMBER

**THE CITY OF WINNIPEG**  
WATER AND WASTE DEPARTMENT  
ENGINEERING DIVISION  
2016 SUPPLEMENTAL WATER MAIN RENEWALS  
CONTRACT 12  
**PEPPERLOAF CRESCENT**  
DUNELM LANE TO  
142 N OF DUNELM LANE

SHEET 7 OF 8  
CITY DRAWING NUMBER  
D-14409