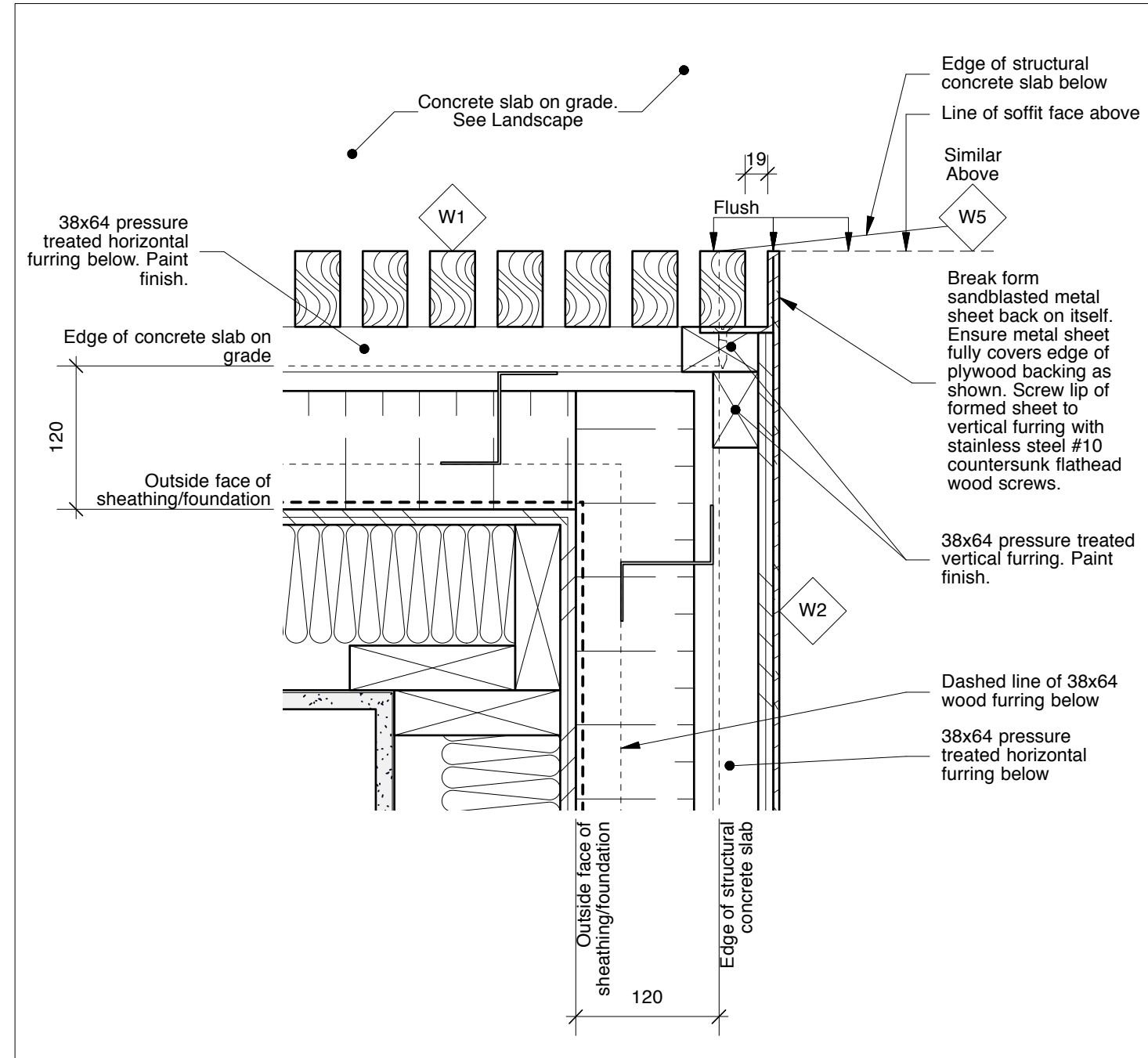
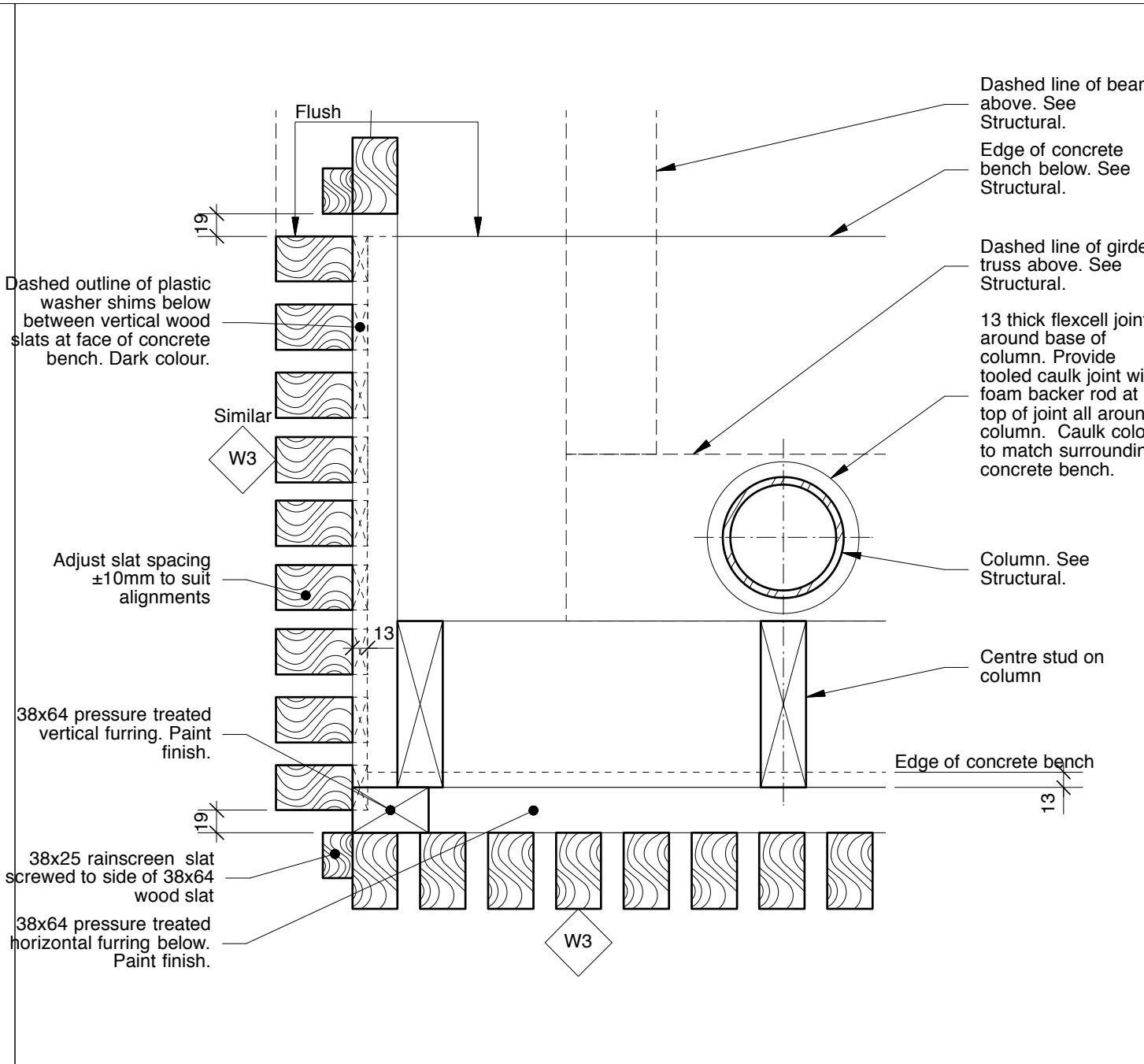


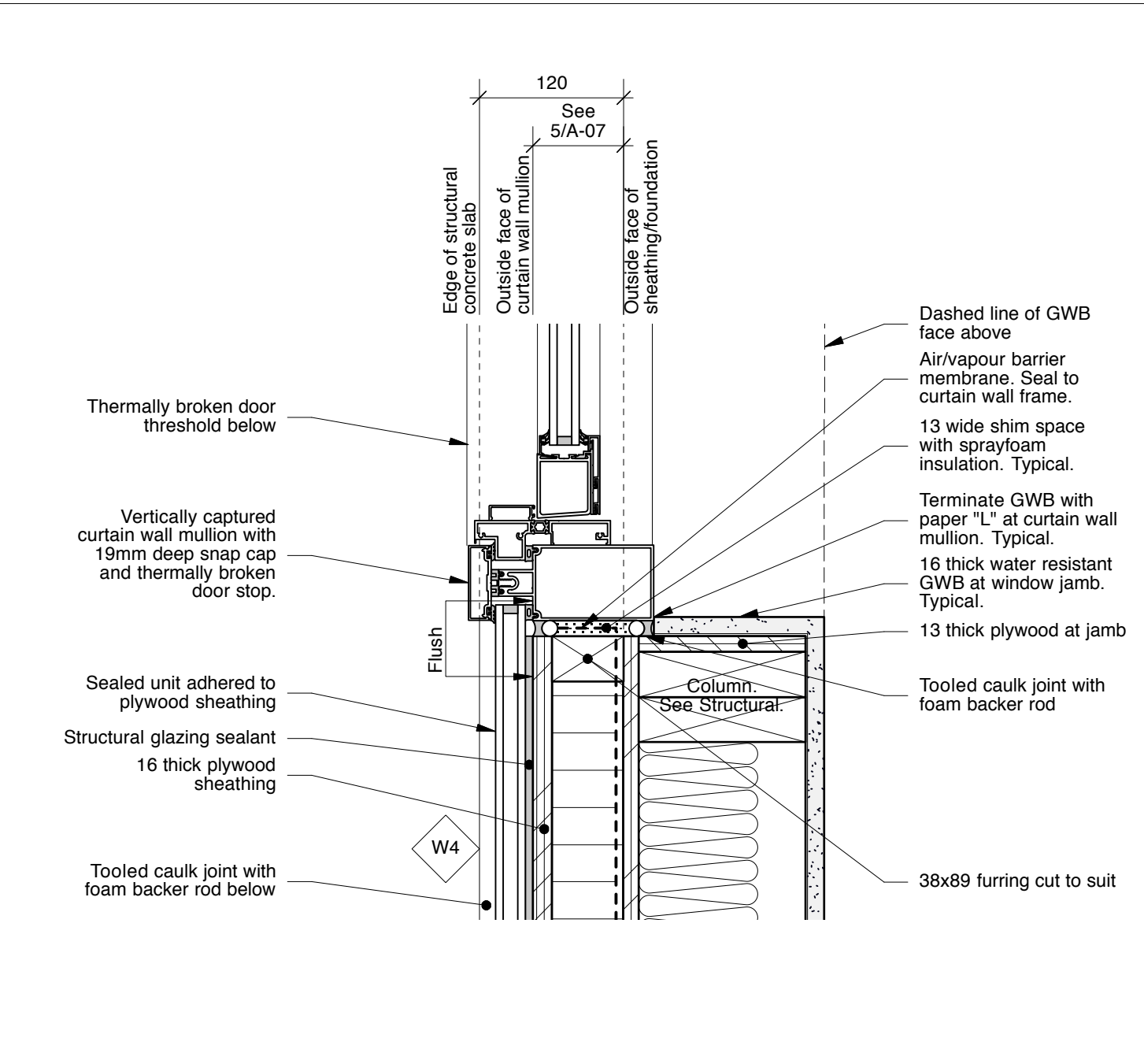
No.	Date	Revision Notes
1.	2016.02.26	Issued for Client Review
2.	2016.07.05	Issued for Construction



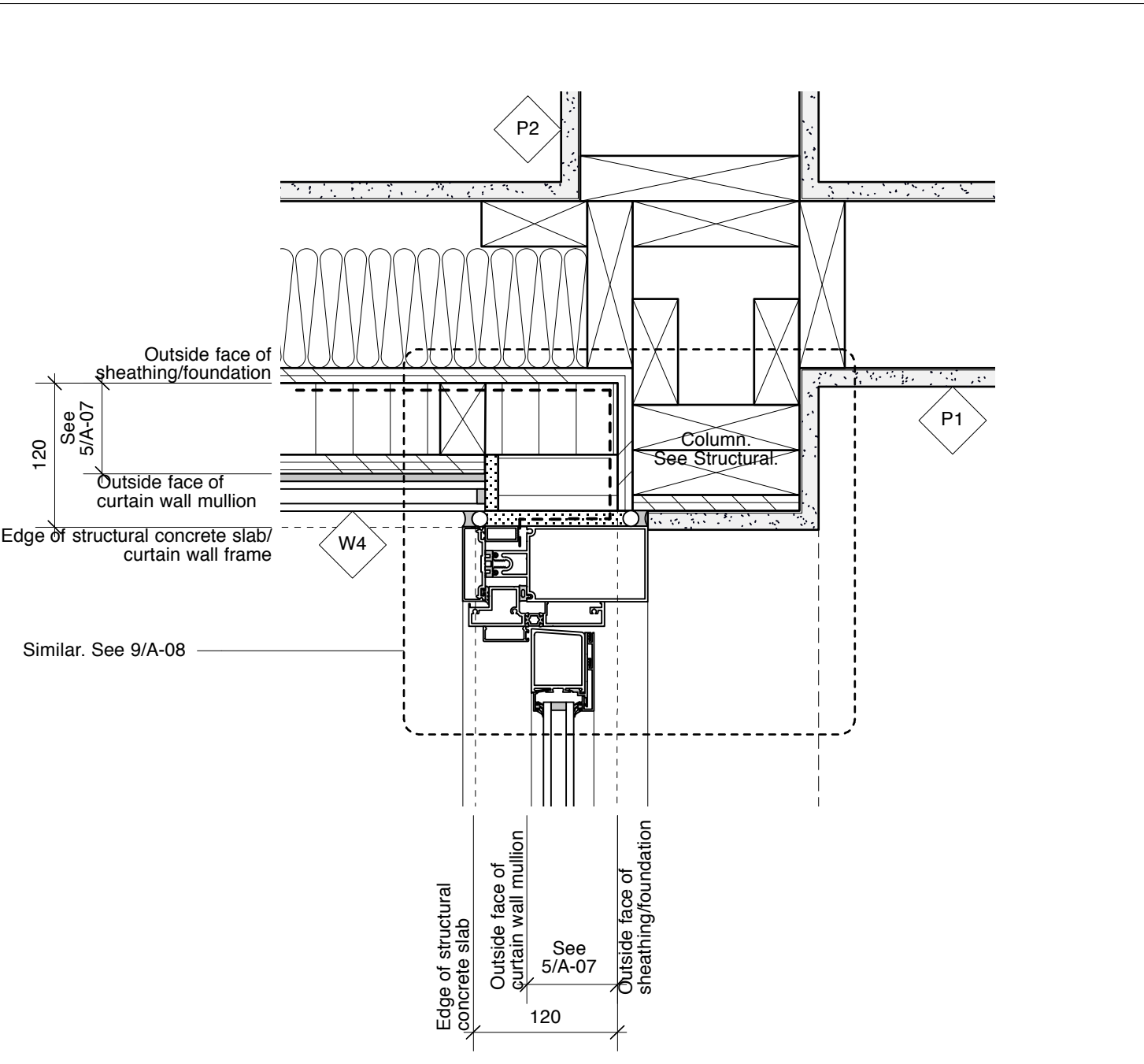
5
 A-08 1:5
 Plan Detail - Typical Polished Metal Wall Cladding Adjoining Wood Slat Screen at Corner



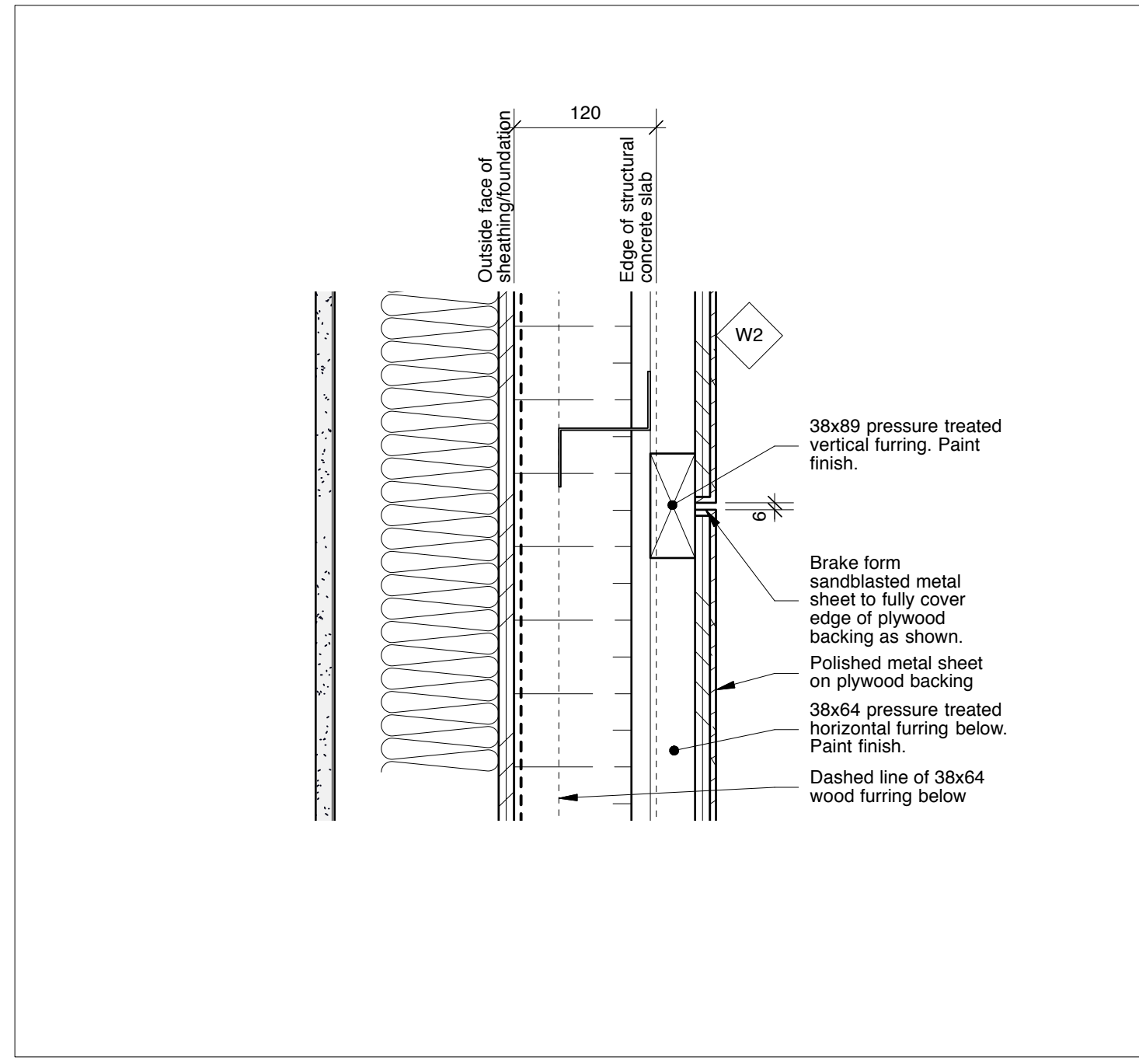
10
 A-08 1:5
 Plan Detail - Wood Slat Screen Edge at Concrete Bench



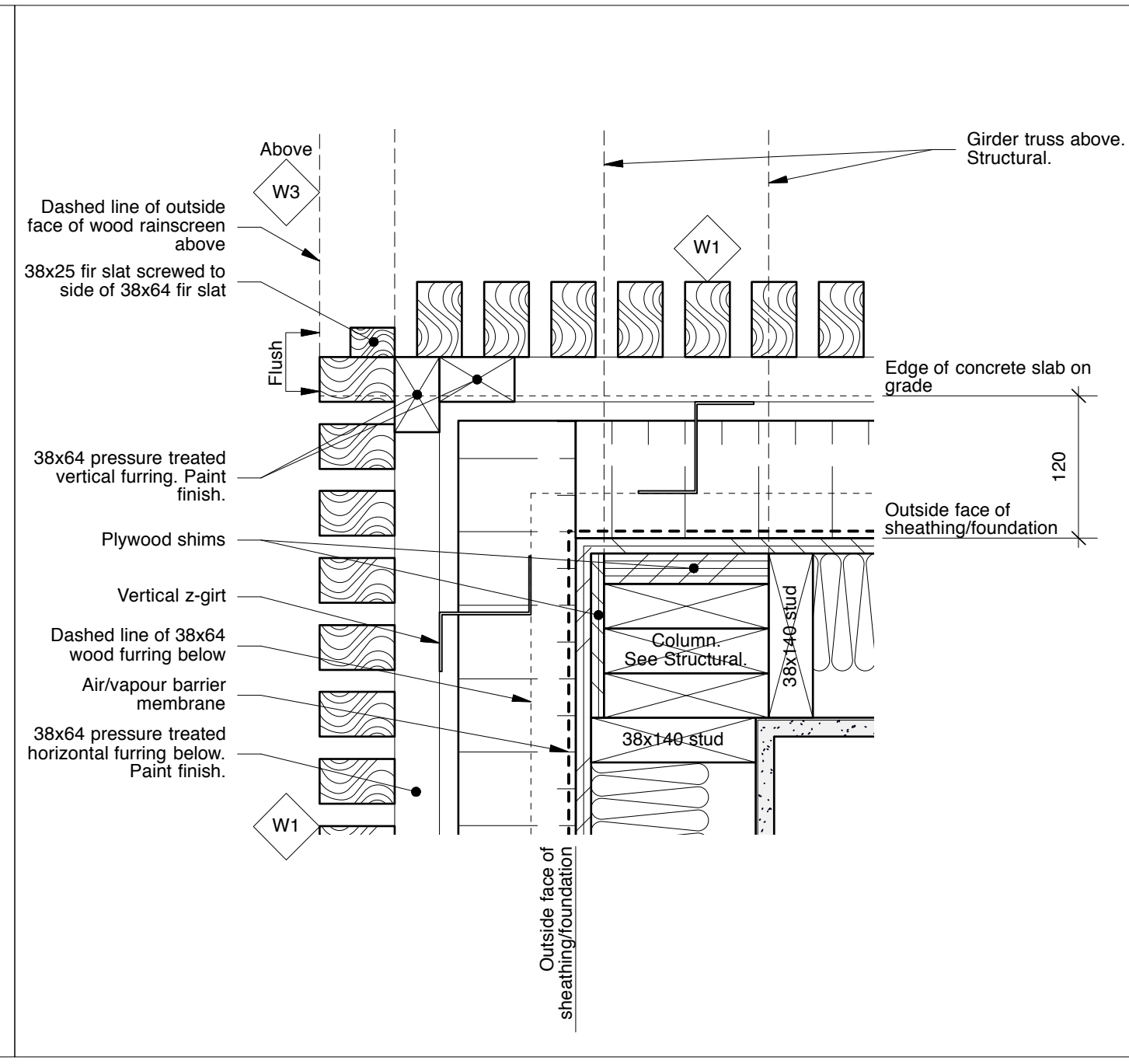
9
 A-08 1:5
 Plan Detail - Door Jamb With Captured/Adhered Sealed Unit



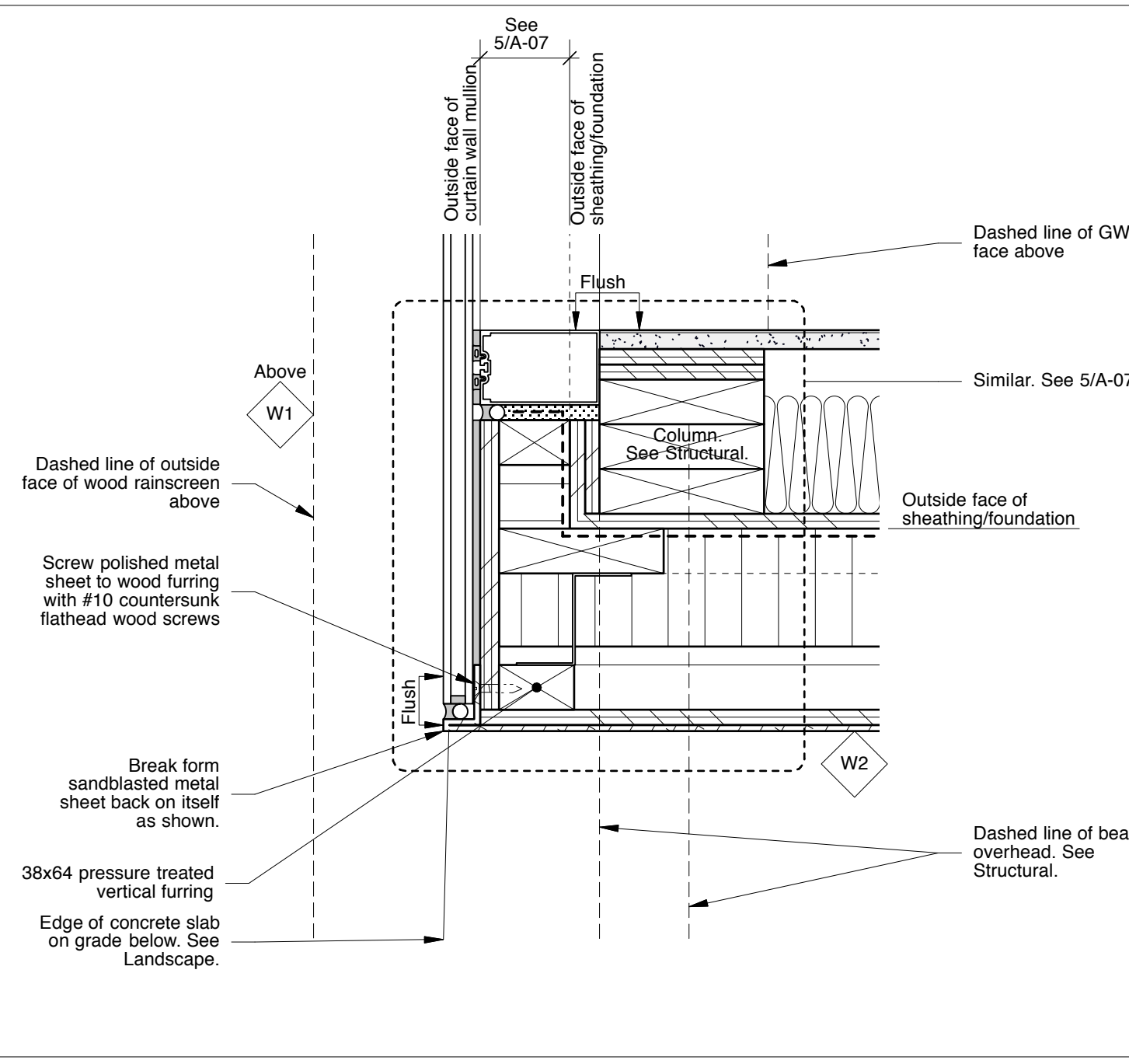
8
 A-08 1:5
 Plan Detail - Door Jamb Abutting Adhered Sealed Unit



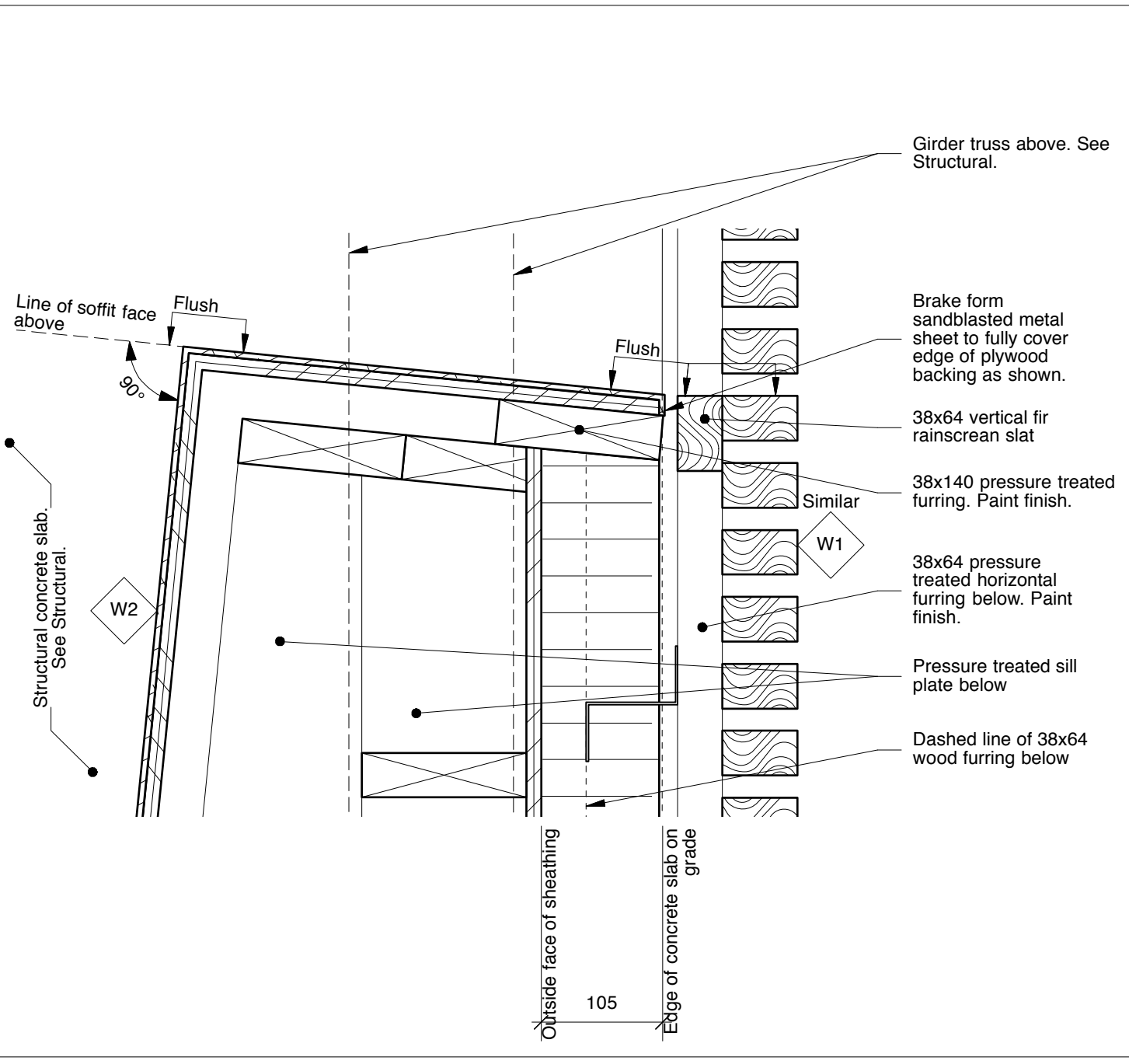
11
 A-08 1:5
 Plan Detail - Vertical Panel Joint in Polished Metal Cladding



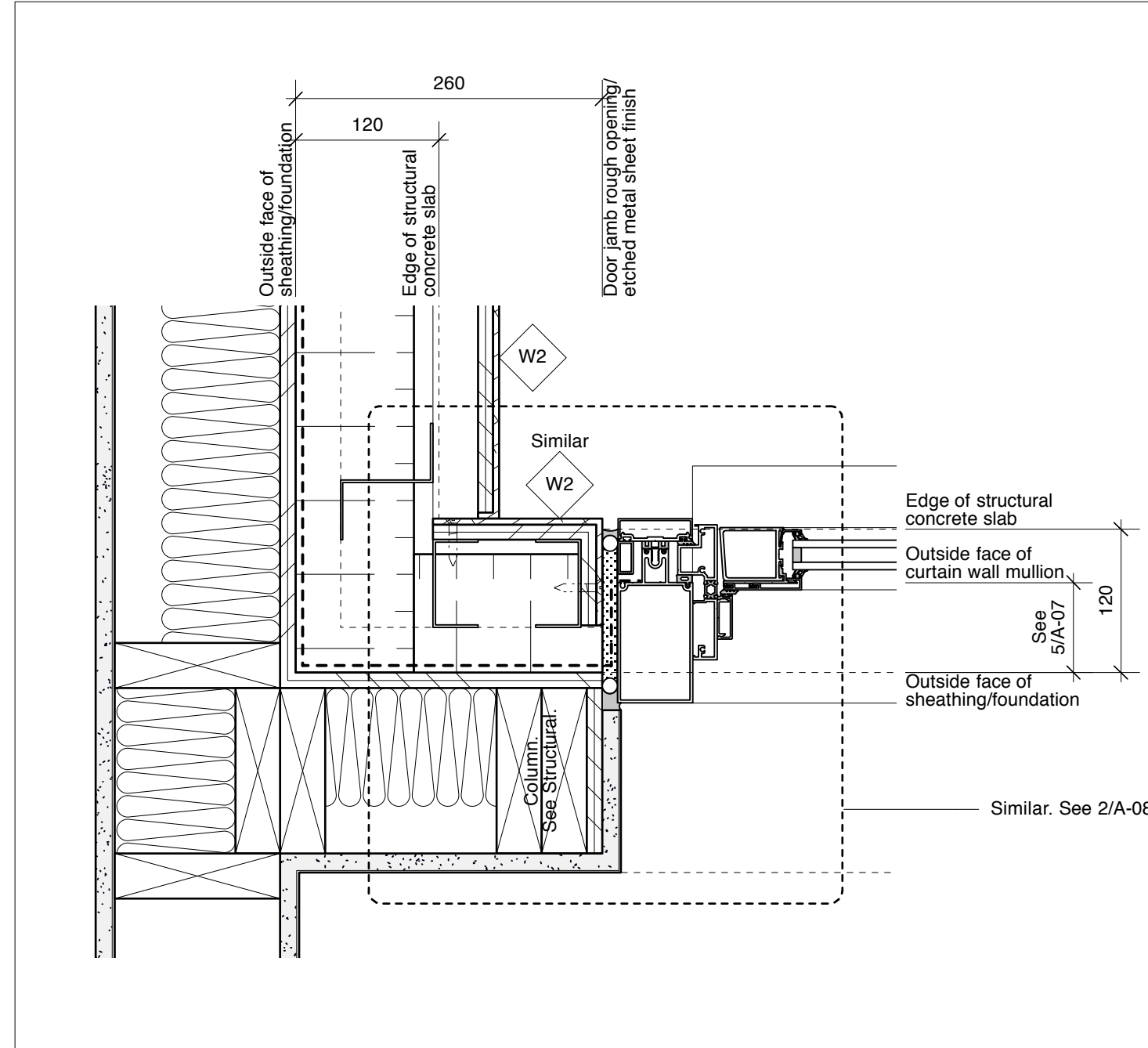
6
 A-08 1:5
 Plan Detail - Typical Wood Slat Screen at Corner



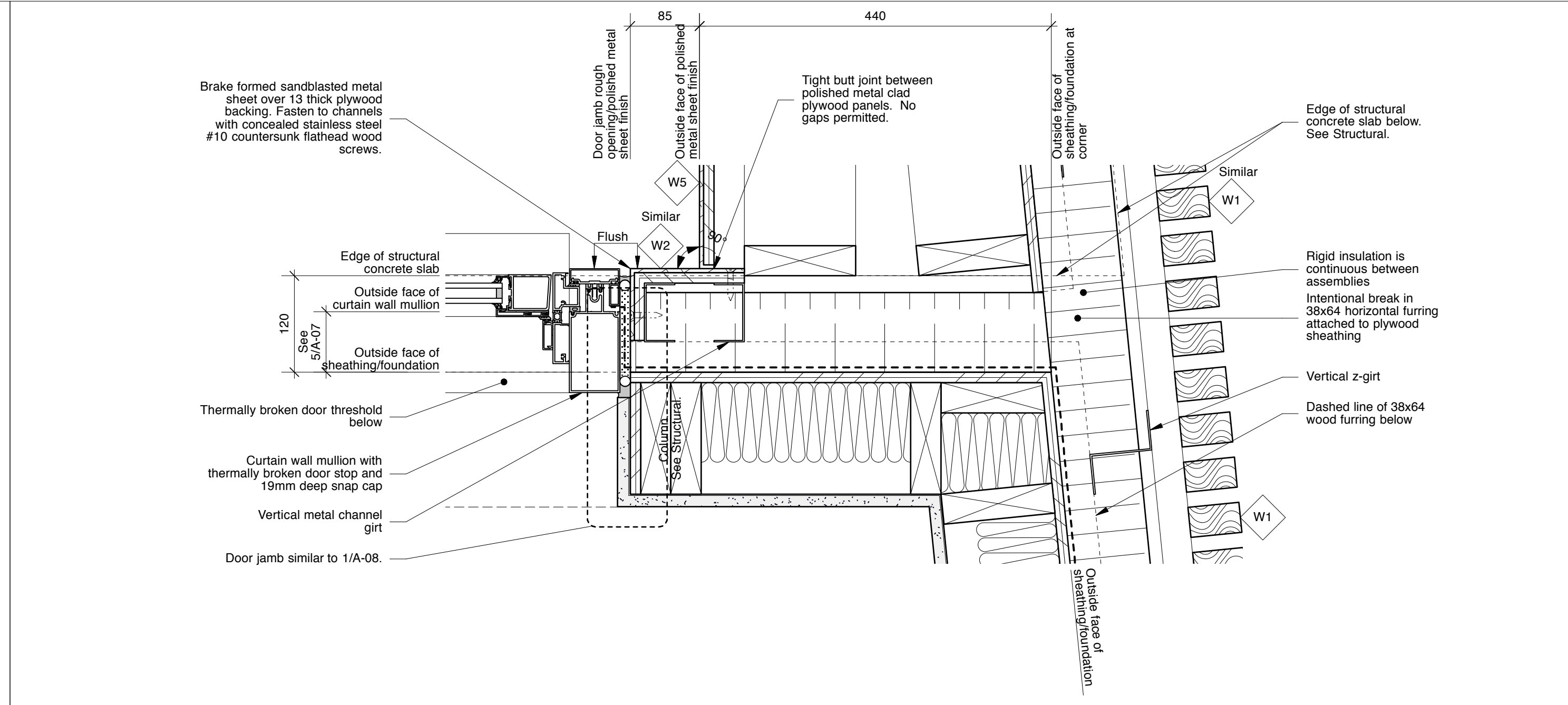
7
 A-08 1:5
 Plan Detail - Window Jamb With Sealed Unit Extension Abutting Polished Metal Cladding



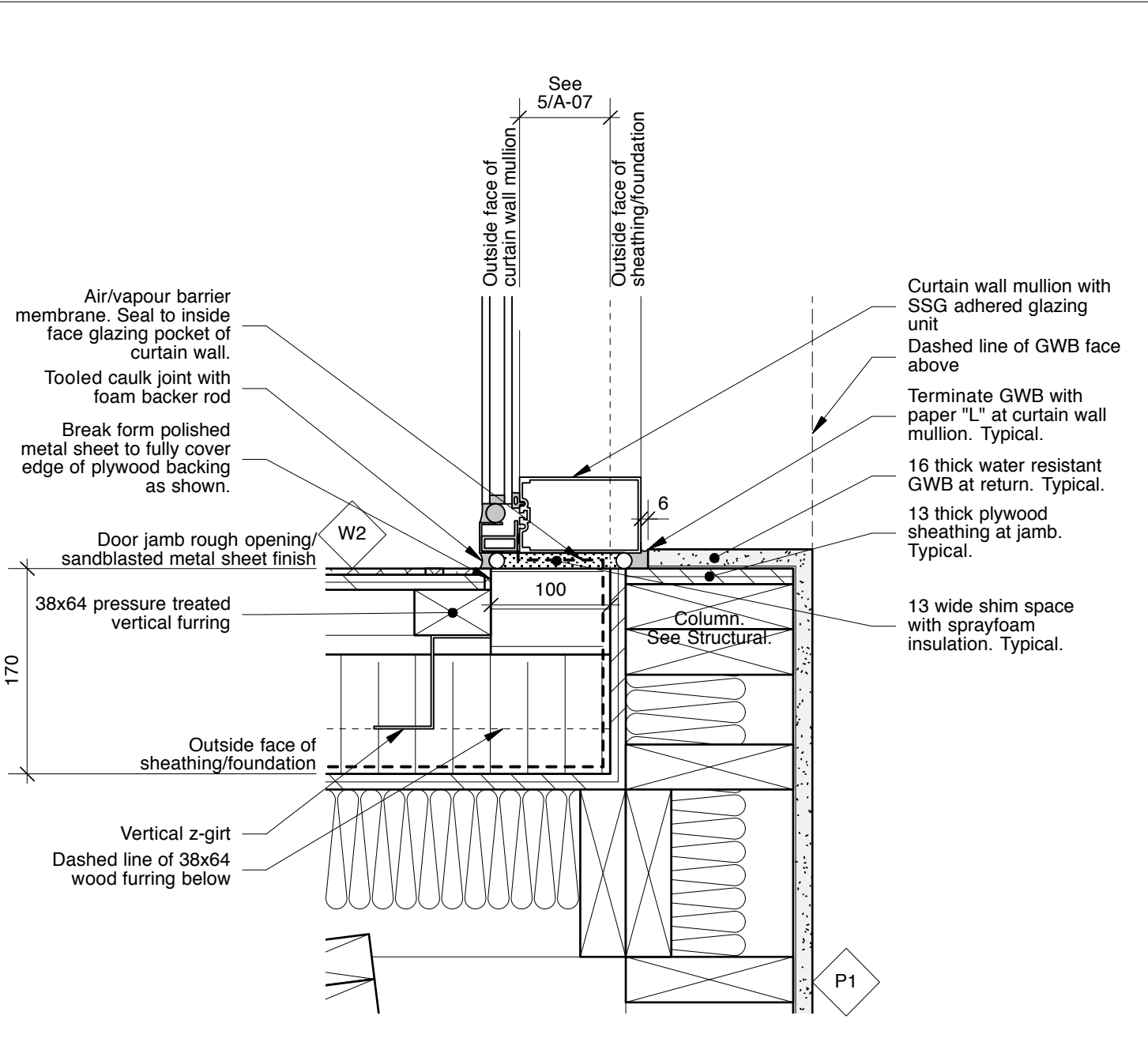
4
 A-08 1:5
 Plan Detail - Window Jamb Abutting Polished Metal Cladding



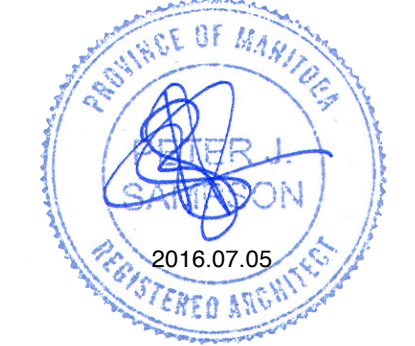
3
 A-08 1:5
 Plan Detail - Multi-Purpose Room Door Jamb Abutting Polished Metal Cladding over Insulated Wall



2
 A-08 1:5
 Plan Detail - Multi-Purpose Room Door Jamb Abutting Polished Metal Cladding over Non-Insulated Wall



1
 A-08 1:5
 Plan Detail - Window Jamb Abutting Polished Metal Cladding



This drawing must not be scaled. The contractors shall verify all dimensions and other data on site prior to commencement of work. Discrepancies, errors, and omissions are to be reported to the Architect prior to proceeding with the Work.
 Drawings and specifications as instruments of service are the property of the Architect; the copyright in the same being reserved to him.
 No reproduction or revision to these drawings may be made without the permission of the Architect, and when made, must bear his name. All prints to be returned to the Architect upon request.

Project
 Crescent Drive Park Pavilion
 Drawing
 Details

Drawn By
 DB, MP
 Scale
 As Noted

Reviewed By
 PS
 Drawing No.
A-08

Date
 January 2016

Project No.
 1448

Revision No.
 0