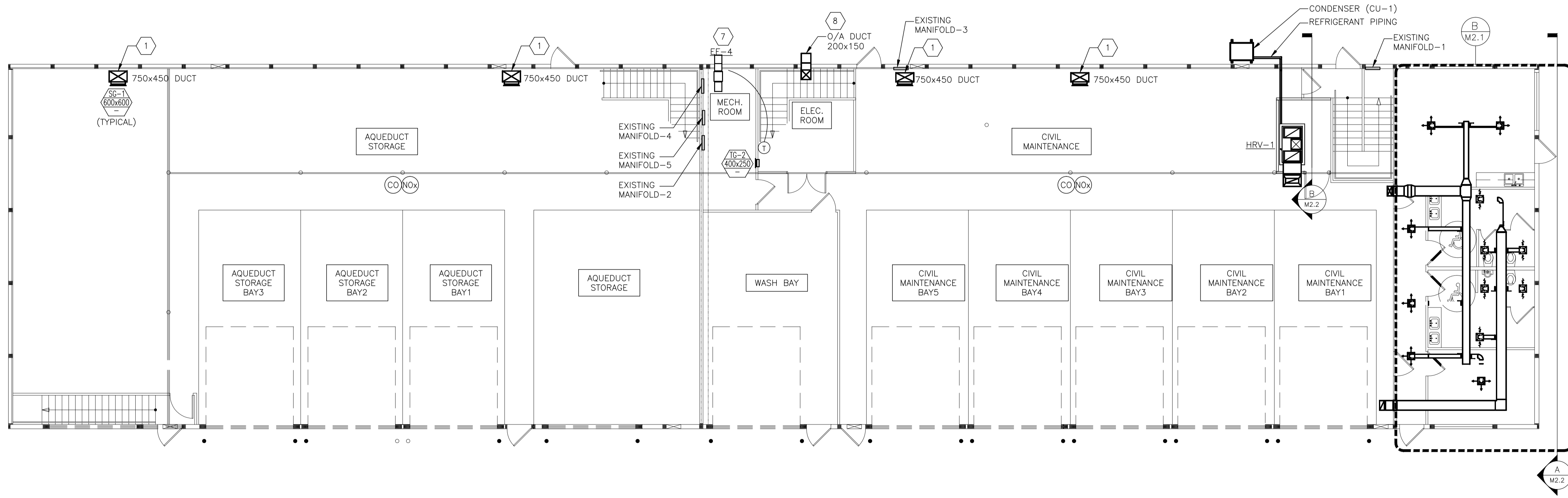


A MEZZANINE LEVEL - HVAC LAYOUT
SCALE 1 = 100



B MAIN FLOOR PLAN - HVAC LAYOUT
SCALE 1 = 100

- GENERAL NOTES**
1. THE CONTRACTOR SHALL BE RESPONSIBLE FOR ANY WORK NOT EXPLICITLY SET OUT IN THE CONTRACT DOCUMENTS BUT WHICH MAY BE REASONABLY IMPLIED FOR THE PROPER COMPLETION OF THE WORK.
 2. THESE PLANS ARE SCHEMATIC IN NATURE AND INDICATE THE APPROXIMATE AND GENERAL LOCATION OF THE WORK. CONTRACTOR SHALL INSTALL WORK THROUGH COORDINATION WITH OTHER TRADES AND TO SUIT FIELD CONDITIONS.
 3. CONTRACTOR SHALL COORDINATE WITH SUBCONTRACTORS TO ENSURE ANY MULTI-DISCIPLINE NOTES OR DETAILS ARE REVIEWED BY ALL SUBCONTRACTORS PRIOR TO BID SUBMISSION. A LATER CLAIM SUBMITTED BY THE CONTRACTOR FOR AN ADDITION TO THE CONTRACT PRICE BECAUSE OF CHANGES IN WORK NECESSITATED DUE TO A LACK OF COORDINATION WILL NOT BE ACCEPTED.
 4. COORDINATE WORKS WITH OTHER SUBCONTRACTORS. REFER TO SPECIFIC DETAILS FOR CUTTING AND SEALING PENETRATIONS THROUGH OPENINGS & FIRE SEPARATIONS.
 5. REFER TO TECHNICAL SPECIFICATIONS FOR EQUIPMENT AND MATERIAL SPECIFICATIONS AND INSTALLATION REQUIREMENTS.
 6. INSULATE DUCTWORK WHERE INDICATED AND SPECIFIED.
 7. PERFORM ALL WORKS IN ACCORDANCE WITH NATIONAL BUILDING CODE, TO SMACNA & ASHRAE STANDARDS, ALL LOCAL CODES, BYLAWS & STANDARDS, AND THE REQUIREMENTS OF THE AUTHORITY HAVING JURISDICTION.
 8. SUPPORT ALL DUCTWORK TO MEET CODE REQUIREMENTS & ESTABLISHED INDUSTRY TRADE PRACTICES. (SMACNA, ASHRAE).
 9. PERFORM ALL CUTTING & PATCHING NECESSARY FOR ANY REQUIRED OPENINGS.
 10. PROVIDE TAB TO ENSURE AIR DISTRIBUTION TO VOLUMES INDICATED.
 11. CONTRACTOR TO PAY FOR AND OBTAIN ALL NECESSARY BUILDING, MECHANICAL AND ELECTRICAL PERMITS/INSPECTIONS REQUIRED BY AUTHORITIES HAVING JURISDICTION.

- KEY NOTES**
- 1 NEW OUTDOOR AIR GRAVITY INTAKE, SIZE AS SHOWN, COMPLETE WITH INLET COWL IN FRAMED OPENING, INSULATED MOTORIZED DAMPER, DUCT RISER AND SUPPLY AIR GRILLE. INTERIOR DUCT RISER TO BE PROVIDED WITH 40MM THICK INSULATING DUCT BLANKET. SUPPORT DUCT AS SPECIFIED. PROVIDE WALL OPENING, BIRD SCREEN AND SEAL WATER TIGHT.
 - 2 NEW HRV-1 SUPPLY AIR/EXHAUST AIR OPENINGS COMPLETE WITH INTAKE/EXHAUST COWL IN FRAMED OPENING, INSULATED MOTORIZED DAMPER. DUCT RUN TO/FROM HRV-1 TO BE PROVIDED WITH 40 MM THICK INSULATING DUCT BLANKET.
 - 3 STORAGE GARAGE EXHAUST FAN EF-3 COMPLETE WITH WALL THIMBLE IN FRAMED OPENING, INLET GUARD, DISCHARGE COWL AND FAN BACK DRAFT DAMPER.
 - 3A CONTROL INTERLOCK TO CO/NOX SENSOR AND INTAKE AIR OPENING MD-1 AND MD-2; BY ELECTRICAL, NIC.
 - 4 STORAGE GARAGE EXHAUST FAN EF-1 COMPLETE WITH WALL THIMBLE IN FRAMED OPENING, INLET GUARD, DISCHARGE COWL AND FAN BACK DRAFT DAMPER.
 - 4A CONTROL INTERLOCK TO CO/NOX SENSOR AND INTAKE AIR OPENING MD-3 AND MD-4; CO/NOX SENSOR SEE SPECIFICATIONS, CONTROL WIRING BY ELECTRICAL, NIC.
 - 5 WASH BAY EXHAUST FAN EF-2 COMPLETE WITH WALL THIMBLE IN FRAMED OPENING, INLET GUARD, DISCHARGE COWL AND FAN BACK DRAFT DAMPER.
 - 5A CONTROL INTERLOCK TO HUMIDITY SENSOR, HS-1; HUMIDITY SENSOR SEE SPECIFICATIONS, CONTROL WIRING BY ELECTRICAL, NIC.
 - 6 CEILING DE-STRATIFICATION FANS, GANGED OPERATION IN EACH STORAGE GARAGE AND COMPLETE WITH WALL MOUNTED SPACE SPEED CONTROLLER MOUNTED AT OPERATOR LEVEL MAIN FLOOR, WIRING BY ELECTRICAL, NIC.
 - 7 BOILER ROOM AND ELECTRICAL ROOM TEMPERATURE CONTROLLED IN LINE EXHAUST FAN EF-4. EF-4 COMPLETE WITH INLET DUCT, DISCHARGE DUCT, RECTANGULAR HOODED WALL CAP AND BACKDRAFT DAMPER; DUCTWORK INSULATED; WIRING BY ELECTRICAL, NIC.
 - 8 ELECTRICAL ROOM OUTDOOR AIR GRAVITY INTAKE. INTAKE COMPLETE WITH INTAKE COWL AND INTERIOR DUCT ORIENTATED AS P-TRAP. 40 MM INSULATING ON INTERIOR DUCTING. INSULATE AND SUPPORT DUCT AS SPECIFIED. PROVIDE WALL OPENING, BIRD SCREEN AND SEAL WATERTIGHT.
 - 9 ELECTRIC UNIT HEATER COMPLETE WITH WALL MOUNTING HARDWARE AND REMOTE MOUNTED WALL LOW VOLTAGE THERMOSTAT. THERMOSTATS ON OUTSIDE WALLS COMPLETE WITH INSULATED BACK PLATE, WIRING BY ELECTRICAL, NIC.

APECN
Certificate of Authorization
Alliance Engineering Services Inc.
No.2906 Date: _____

B.M. ELEV.	FIELD BOOK #:
POSTED TO LBIS	
DESIGNED BY	AFG
CHECKED BY	AFG
DRAWN BY	LM
HOR. SCALE AS NOTED	
VERTICAL AS NOTED	
NO. REVISIONS	DATE BY
1	REVISED & RE-ISSUED FOR TENDER & CONSTRUCTION 2016-07-08 AFG
0	ISSUED FOR TENDER & CONSTRUCTION 2016-06-30 AFG
B	ISSUED FOR 99% 2016-06-15 AFG
A	ISSUED FOR 33% CLIENT REVIEW 2016-05-13 AFG
	DATE 2016-06-15

Alliance
ENGINEERING SERVICES INC.

DESIGNED BY: AFG
CHECKED BY: AFG
DRAWN BY: LM
HOR. SCALE AS NOTED
VERTICAL AS NOTED
DATE: 2016-06-15

RELEASED FOR CONSTRUCTION
DATE:

ENGINEER'S SEAL
PROVINCE OF MANITOBA
A.F.G.
GOSSEN
11-Jul-16
REGISTERED PROFESSIONAL ENGINEER

CONSULTANT DRAWING NO.
M2.0

THE CITY OF WINNIPEG
WATER AND WASTE DEPARTMENT

Winnipeg

SUPPLY & INSTALL OF HVAC SYSTEMS

HVAC FLOOR PLANS

SHEET 1 OF 1
CITY DRAWING NUMBER
1-0601M-M0003-001