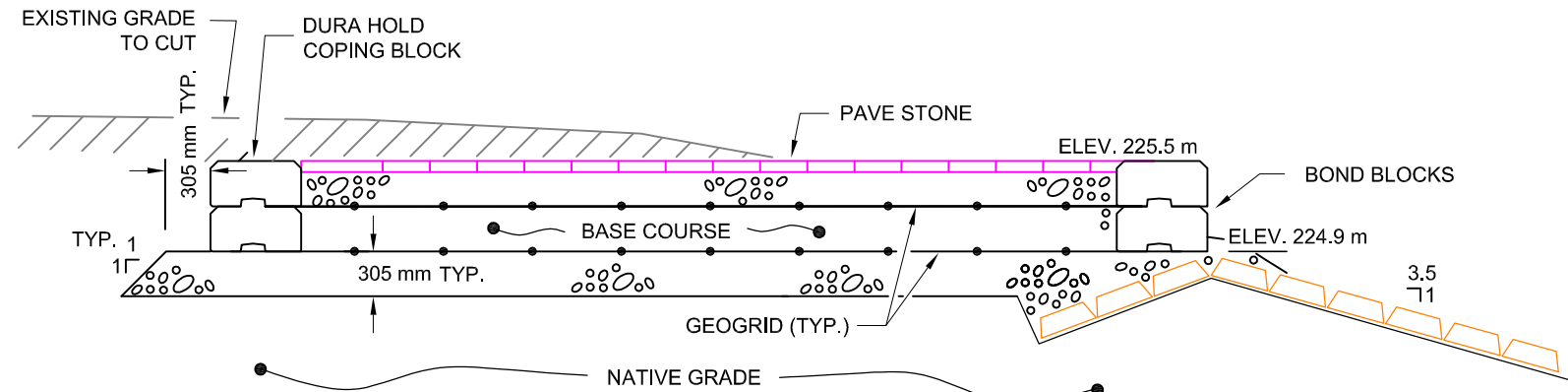
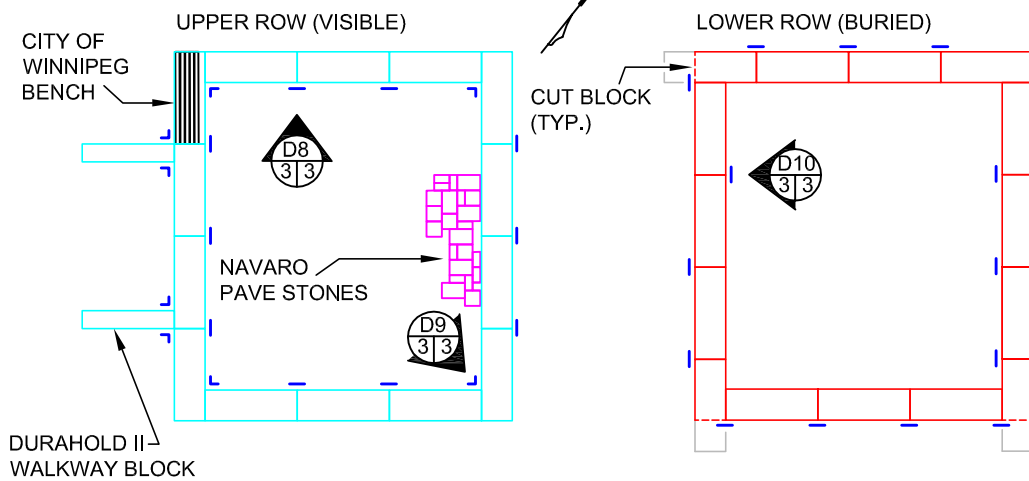
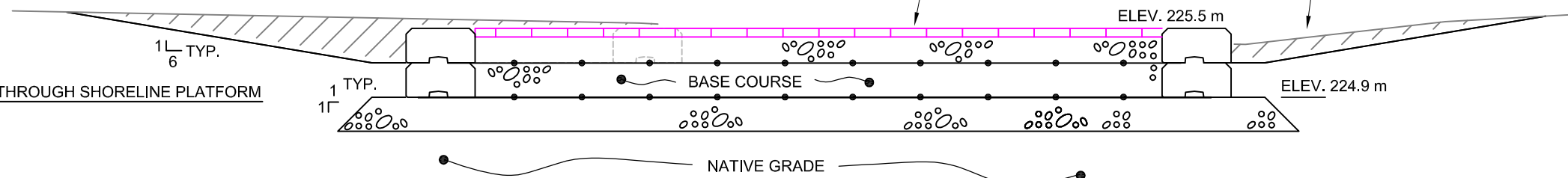


**D1** PLAN DURA HOLD BLOCK LOCATION  
1:150



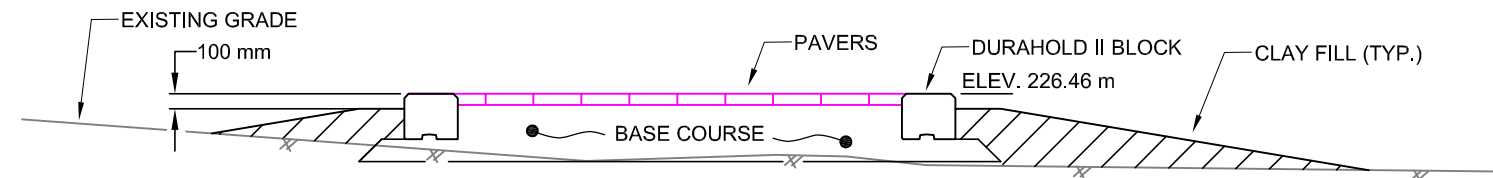
**D3** NORTHEASTWARD SECTION THROUGH SHORELINE PLATFORM  
1:50

**D4** NORTHWESTWARD SECTION THROUGH SHORELINE PLATFORM  
1:50

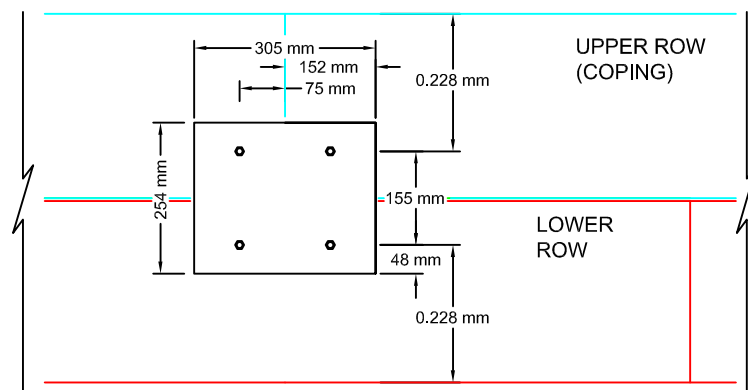


**ADDITIONAL NOTES**

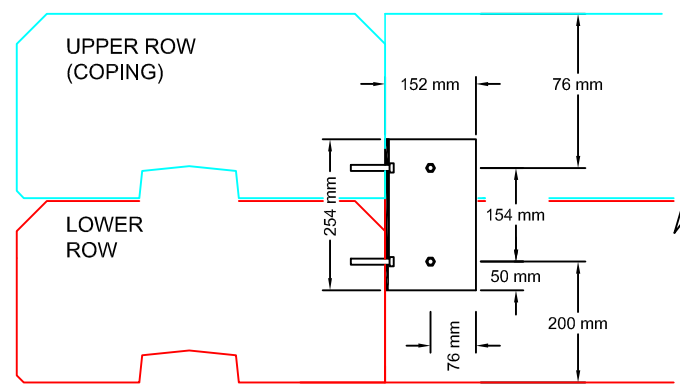
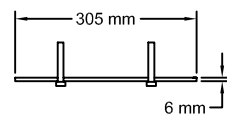
- PLATES SHALL BE HOT TIP GALVANIZED.
- CINCH ANCHOR BOLTS SHALL BE 10 mm ( 3/8 INCH), STAINLESS STEEL.
- FASTEN UPPER AND LOWER BLOCKS TOGETHER USING PLATE 1 ALONG FLAT SURFACES AND USING PLATE 2 AT RIGHT ANGLE CORNERS.
- D8 AND D10 BOTH USE PLATE 1 TO FASTEN BLOCKS TOGETHER, BUT UPPER AND LOWER BLOCK LOCATIONS DIFFER.
- D8 INDICATES THE PLATE THAT FASTENS TWO UPPER BLOCKS AND ONE LOWER BLOCK.
- D10 INDICATES THE PLATE THAT FASTENS ONE UPPER BLOCK AND TWO LOWER BLOCKS.
- BOND DURAHOLD BLOCKS TOGETHER USING LEPAGE PL PREMIUM CONSTRUCTION ADHESIVE OR EQUIVALENT.



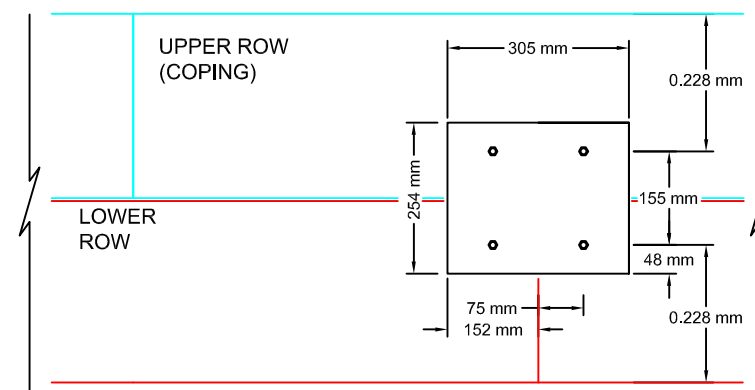
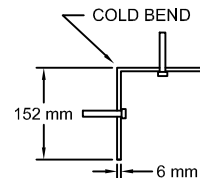
**D11** NORTHWESTWARD SECTION THROUGH SHORELINE PLATFORM  
1:50



**D8** PLATE 1 (25 PLATES TOTAL)  
NTS

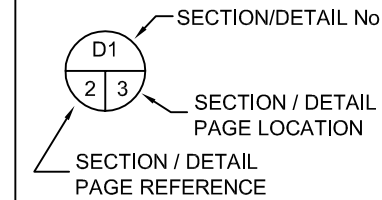


**D9** PLATE 2 (8 PLATES TOTAL)  
NTS



**D10** PLATE 1  
NTS

**LEGEND**



- DURAHOLD (LxWxH) (1.83m x 0.610m x 0.305m)
- DURAHOLD II (LxWxH) (1.83m x 0.355m x 0.305m)

**NOTES**

- ALL ELEVATIONS AND DIMENSIONS ARE IN METERS UNLESS OTHERWISE NOTED.
- CONCRETE IS ABBREVIATED CONC.
- HARD COMPACT NATIVE SUB GRADE TO 98% MAXIMUM DRY DENSITY (MDD), ±2% OPTIMUM MOISTURE CONTENT.
- COMPACT BASE COURSE TO 100% MDD, ±2% OF OPTIMUM MOISTURE CONTENT.
- MOST RECENT VERSION OF CITY OF WINNIPEG STANDARD CONSTRUCTION SPECIFICATIONS SHALL BE USED.
- BASE COURSE SHALL MEET SPECIFICATIONS FOR CRUSHED LIMESTONE CW 3110.

No.	DATE	ISSUE /REVISION
0	Aug 2016	Tender/ Construction

**ENG-TECH CONSULTING LIMITED**  
6 - 854 Marion Street  
Winnipeg, MB R2J 0K4  
Phone: (204) 233-1694  
Fax: (204) 235-1579

ENG. STAMP:  
**APEGM**  
Certificate of Authorization  
ENG-TECH Consulting Limited  
No.2475 Expiry: April 30, 2017

CLIENT: CITY OF WINNIPEG

PROJECT: CRESCENT DRIVE, PROPOSED CANOE LAUNCH SITE, WINNIPEG, MANITOBA

DWG DESCRIPTION: DURA HOLD LOCATIONS, CROSS SECTIONS AND PLATE DETAILS

SCALE: AS SHOWN

DRAWN BY: ERM DATE: AUGUST 2016

FILE No.: 15-217-01 CLIENT DWG/FIG. No.:

ENG-TECH DWG/FIG. No.: 3 OF 6