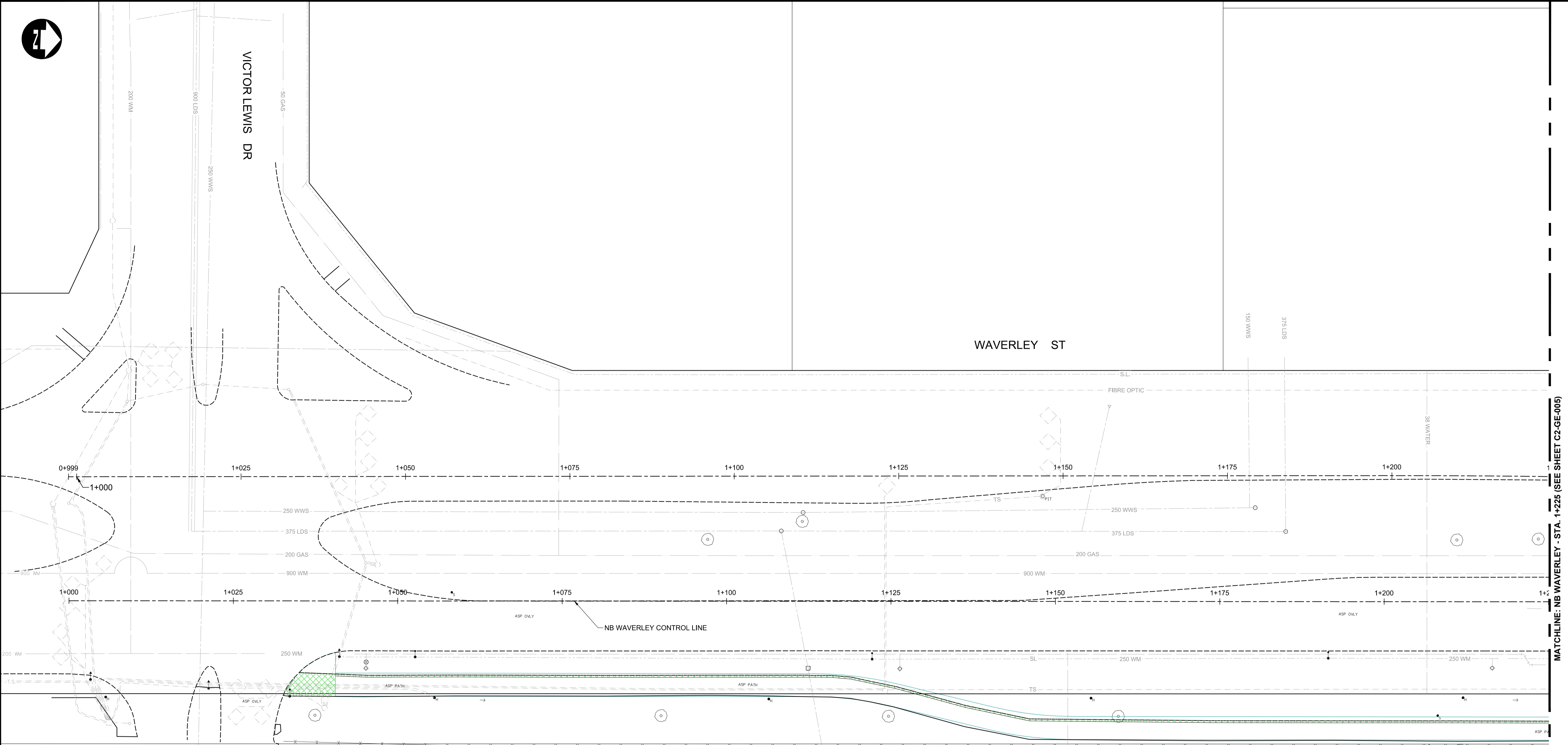


VICTOR LEWIS DR

WAVERLEY ST

MATCHLINE: NB WAVERLEY - STA. 1+225 (SEE SHEET C2-GE-005)



**LEGEND**

REMOVALS / RELOCATES

REMOVALS / RELOCATES BY OTHERS

ADJUSTMENTS

CONCRETE SIDEWALK REMOVAL

ASPHALT SIDEWALK REMOVAL

CONCRETE REMOVAL

ASPHALT REMOVAL

ASPHALT PLANING

NOTE:

1) SEE LANDSCAPING DRAWINGS FOR TREE REMOVALS (TYP.)

2) SEE UNDERGROUND DRAWINGS FOR UNDERGROUND REMOVALS (TYP.)

**APEGM**

Certificate of Authorization

Dillon Consulting Limited (MB)

No. 1789 Date: 17/01/09

150 WM	WATERMAIN	150 WM	CONCRETE	150 WM	WATERMAIN	150 WM
300 LDS	HYDRANT	300 LDS	ASPHALT	300 LDS	LAND DRAINAGE SEWER	300 LDS
250 WWS	VALVE	250 WWS	PLANING	250 WWS	WASTE WATER SEWER	250 WWS
900 WM	MANHOLE	900 WM	SIDEWALK	900 WM	HYDRANT	900 WM
250 WM	CATCH BASIN	250 WM	PAVING STONES	250 WM	VALVE	250 WM
300 LDS	CURB INLET	300 LDS	PARTIAL DEPTH REPAIR	300 LDS	Q PROFILE	300 LDS
250 WWS	LAND DRAINAGE SEWER	250 WWS	PROPERTY LINE	250 WWS	NORTH/WEST GUTTER	250 WWS
HYDRO	WASTE WATER SEWER	HYDRO	DRAINAGE ARROW	HYDRO	SOUTH/EAST GUTTER	HYDRO
M.T.S.	HYDRO	M.T.S.	CURB RAMP (SD-229C)	M.T.S.	NORTH/WEST DITCH	M.T.S.
100 GAS	M.T.S.	100 GAS	DETECTABLE WARNING	100 GAS	SOUTH/EAST DITCH	100 GAS
EXISTING	GAS	EXISTING	SURFACE TILE (SD-229AA)	EXISTING	LEGEND-PROFILE	EXISTING
LEGEND-PLAN	PROPOSED	LEGEND-PLAN	PROPOSED	LEGEND-PROFILE	PROPOSED	LEGEND-PROFILE

**UNDERGROUND STRUCTURES**

SUPPLY: U/G STRUCTURES DATE

LOCATION OF UNDERGROUND STRUCTURES AS SHOWN ARE BASED ON THE BEST INFORMATION AVAILABLE. BUT NO GUARANTEE IS GIVEN THAT ALL EXISTING UTILITIES ARE SHOWN OR THAT THE GIVEN LOCATIONS ARE EXACT. CONFIRMATION OF EXISTENCE AND EXACT LOCATION OF ALL SERVICES MUST BE OBTAINED FROM THE INDIVIDUAL UTILITIES BEFORE PROCEEDING WITH CONSTRUCTION.

B.M. ELEV.			
NO.	REVISIONS	DATE	BY
0	ISSUED FOR TENDER	17/01/09	DBW

DESIGNED BY	PMW	CHECKED BY	RTP
DRAWN BY	RD	APPROVED BY	DBW
HOR. SCALE	1:250	RELEASED FOR CONSTRUCTION	
VERTICAL		DATE	

ENGINEER'S SEAL

PROVINCE OF MANITOBA

**D.B. WIEBE**

Member 22480

REGISTERED PROFESSIONAL ENGINEER

CONSULTANT PROJECT NUMBER

16-3353

**THE CITY OF WINNIPEG**

PUBLIC WORKS DEPARTMENT

WAVERLEY STREET UNDERPASS AT CN MILE 3.89 RIVERS SUB CONTRACT 2: UNDERPASS STRUCTURE, RAILWORKS, ROADWORKS, LAND DRAINAGE SEWER, PUMPING STATION AND LANDSCAPING WORKS

CITY DRAWING NUMBER U-239-2016-C2-GE-004

SHEET 004 OF 052

CONSULTANT DRAWING NUMBER C2-GE-004

WAVERLEY REMOVALS (1 OF 8)

G:\CAD\163353\Technical\Workspace\Engineering\Drawings and Figures\Roadworks\Contract\163353-C2-CON-C1-REMOVALS.dwg