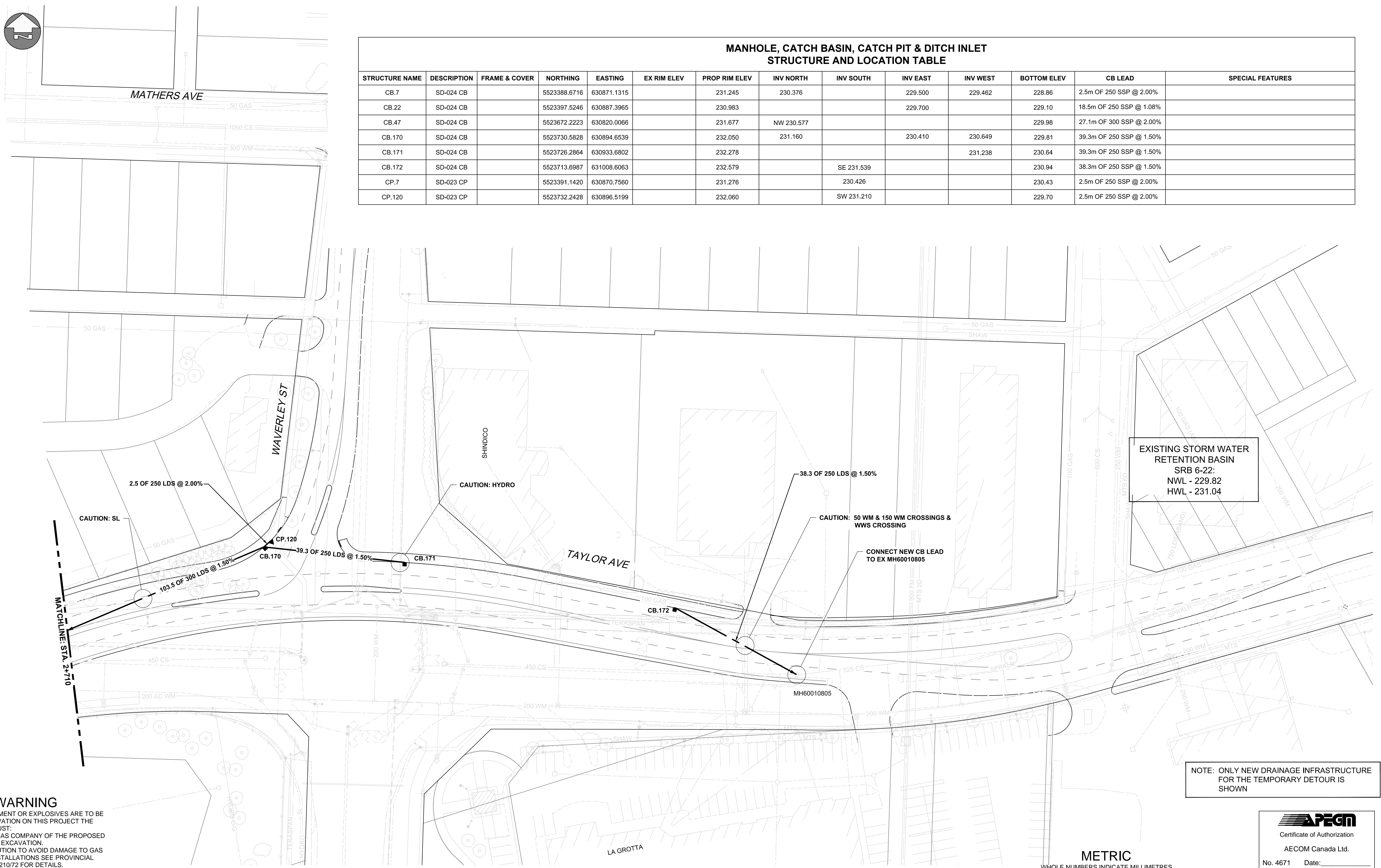


MANHOLE, CATCH BASIN, CATCH PIT & DITCH INLET STRUCTURE AND LOCATION TABLE													
STRUCTURE NAME	DESCRIPTION	FRAME & COVER	NORTHING	EASTING	EX RIM ELEV	PROP RIM ELEV	INV NORTH	INV SOUTH	INV EAST	INV WEST	BOTTOM ELEV	CB LEAD	SPECIAL FEATURES
CB.7	SD-024 CB		5523388.6716	630871.1315		231.245	230.376		229.500	229.462	228.86	2.5m OF 250 SSP @ 2.00%	
CB.22	SD-024 CB		5523397.5246	630887.3965		230.983			229.700		229.10	18.5m OF 250 SSP @ 1.08%	
CB.47	SD-024 CB		5523672.2223	630820.0066		231.677	NW 230.577				229.98	27.1m OF 300 SSP @ 2.00%	
CB.170	SD-024 CB		5523730.5828	630894.6539		232.050	231.160		230.410	230.649	229.81	39.3m OF 250 SSP @ 1.50%	
CB.171	SD-024 CB		5523726.2864	630933.6802		232.278				231.238	230.64	39.3m OF 250 SSP @ 1.50%	
CB.172	SD-024 CB		5523713.6987	631008.6063		232.579		SE 231.539			230.94	38.3m OF 250 SSP @ 1.50%	
CP.7	SD-023 CP		5523391.1420	630870.7560		231.276		230.426			230.43	2.5m OF 250 SSP @ 2.00%	
CP.120	SD-023 CP		5523732.2428	630896.5199		232.060		SW 231.210			229.70	2.5m OF 250 SSP @ 2.00%	



EXISTING STORM WATER RETENTION BASIN  
 SRB 6-22:  
 NWL - 229.82  
 HWL - 231.04

NOTE: ONLY NEW DRAINAGE INFRASTRUCTURE FOR THE TEMPORARY DETOUR IS SHOWN

**WARNING**

IF POWER EQUIPMENT OR EXPLOSIVES ARE TO BE USED FOR EXCAVATION ON THIS PROJECT THE CONTRACTOR MUST:  
 1. NOTIFY THE GAS COMPANY OF THE PROPOSED LOCATION OF EXCAVATION.  
 2. TAKE PRECAUTION TO AVOID DAMAGE TO GAS COMPANY INSTALLATIONS SEE PROVINCIAL REGULATION 210/72 FOR DETAILS.  
 3. OBTAIN EXCAVATION PERMITS PRIOR TO CONSTRUCTION.

**AECOM**  
 Certificate of Authorization  
 AECOM Canada Ltd.  
 No. 4671 Date: \_\_\_\_\_

**METRIC**  
 WHOLE NUMBERS INDICATE MILLIMETRES  
 DECIMALIZED NUMBERS INDICATE METRES

BID OPPORTUNITY NO. 473-2016

150 WM	150 WM	150 WM	150 WM	150 WM	150 WM	150 WM	150 WM
HYDRANT	HYDRANT	SURVEY BAR	HYDRANT	HYDRANT	LAND DRAINAGE SEWER	LAND DRAINAGE SEWER	LAND DRAINAGE SEWER
VALVE	VALVE	CURB STOP	VALVE	VALVE	WASTE WATER SEWER	WASTE WATER SEWER	WASTE WATER SEWER
300 LDS	300 LDS	REDUCER	300 LDS	300 LDS	SEWER SERVICE PIPE	SEWER SERVICE PIPE	SEWER SERVICE PIPE
250 WWS	250 WWS	COUPLING	250 WWS	250 WWS	DRAINAGE CONNECTION PIPE	DRAINAGE CONNECTION PIPE	DRAINAGE CONNECTION PIPE
MANHOLE	MANHOLE	HYDRO	MANHOLE	MANHOLE	CATCH BASIN	CATCH BASIN	CATCH BASIN
CATCH BASIN	CATCH BASIN	MTS	CATCH BASIN	CATCH BASIN	CURB INLET	CURB INLET	CURB INLET
CURB INLET	CURB INLET	GAS	CURB INLET	CURB INLET	CULVERT	CULVERT	CULVERT
CULVERT	CULVERT	TESTHOLE	CULVERT	CULVERT	EXISTING	NEW	NEW
EXISTING	NEW	LAMP STANDARD	EXISTING	NEW	LEGEND - PLAN	LEGEND - PROFILE	LEGEND - PROFILE

UNDERGROUND STRUCTURES	
SUPV. U/G STRUCTURES	DATE

B.M. ELEV.			

**AECOM**

DESIGNED BY	MPG	CHECKED BY	
DRAWN BY	KLC	APPROVED BY	
HOR. SCALE	1:500	RELEASED FOR CONSTRUCTION	
VERTICAL	1:100		

ENGINEER'S SEAL  
 PROVINCE OF MANITOBA  
**M.P.A. GAUDREAU**  
 Member 32167  
 REGISTERED PROFESSIONAL ENGINEER

**THE CITY OF WINNIPEG**  
 PUBLIC WORKS DEPARTMENT

Waverley Street Underpass at CN Mile 3.89 Rivers Sub  
 Contract 2: Underpass Structure, Railworks, Roadworks, Land Drainage Sewer, Pumping Station and Landscaping Works

CITY DRAWING NUMBER  
 U239-2016-C2-CU-015

SHEET 15 OF 41

CONSULTANT DRAWING NUMBER  
 C2-CU-015

DETOUR DRAINAGE PLAN 2

P:\60321148\900-Work\9100-DD-CAD\200-SHEETS\Municipal\63353-C2-CO-CU-CU-DeTour-001.dwg  
 17/01/09 WJD