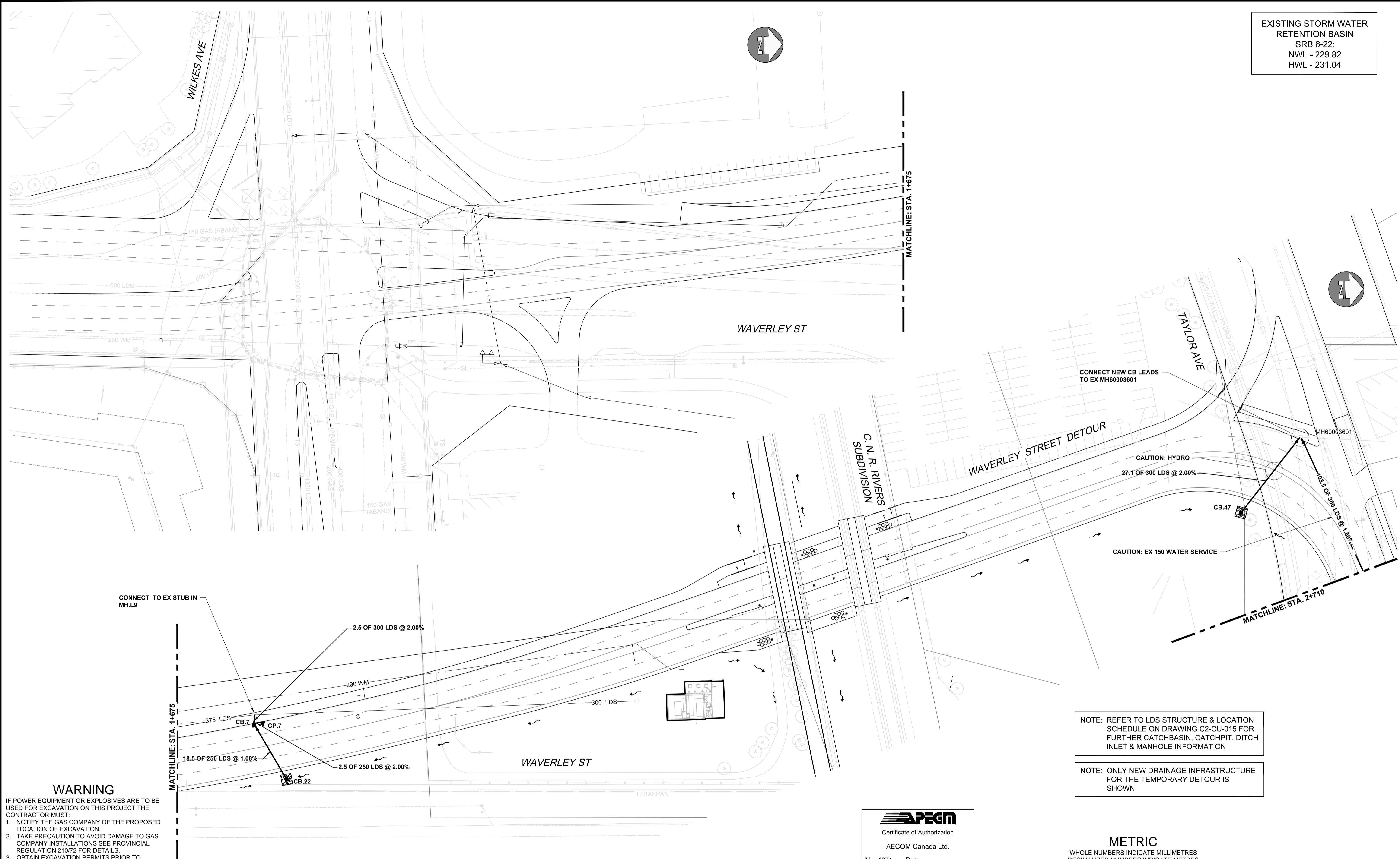


EXISTING STORM WATER  
RETENTION BASIN  
SRB 6-22:  
NWL - 229.82  
HWL - 231.04



CONNECT TO EX STUB IN  
MH.9

CONNECT NEW CB LEADS  
TO EX MH60003601

CAUTION: HYDRO

CAUTION: EX 150 WATER SERVICE

**WARNING**

- IF POWER EQUIPMENT OR EXPLOSIVES ARE TO BE USED FOR EXCAVATION ON THIS PROJECT THE CONTRACTOR MUST:
1. NOTIFY THE GAS COMPANY OF THE PROPOSED LOCATION OF EXCAVATION.
  2. TAKE PRECAUTION TO AVOID DAMAGE TO GAS COMPANY INSTALLATIONS SEE PROVINCIAL REGULATION 210/72 FOR DETAILS.
  3. OBTAIN EXCAVATION PERMITS PRIOR TO CONSTRUCTION.

NOTE: REFER TO LDS STRUCTURE & LOCATION SCHEDULE ON DRAWING C2-CU-015 FOR FURTHER CATCHBASIN, CATCHPIT, DITCH INLET & MANHOLE INFORMATION

NOTE: ONLY NEW DRAINAGE INFRASTRUCTURE FOR THE TEMPORARY DETOUR IS SHOWN

**AECOM**  
Certificate of Authorization  
AECOM Canada Ltd.  
No. 4671 Date: \_\_\_\_\_

**METRIC**  
WHOLE NUMBERS INDICATE MILLIMETRES  
DECIMALIZED NUMBERS INDICATE METRES

BID OPPORTUNITY NO. 473-2016

150 WM	WATER MAIN	150 WM	PIPE ABANDONMENTS	150 WM	WATER MAIN	150 WM	WATER MAIN
⊕	HYDRANT	⊕	SURVEY BAR	+	HYDRANT	+	HYDRANT
⊕	VALVE	⊕	CURB STOP	X	VALVE	X	VALVE
300 LDS	LAND DRAINAGE SEWER	300 LDS	REDUCER	300 LDS	LAND DRAINAGE SEWER	300 LDS	LAND DRAINAGE SEWER
250 WWS	WASTE WATER SEWER	250 WWS	COUPLING	250 WWS	WASTE WATER SEWER	250 WWS	WASTE WATER SEWER
---	SEWER SERVICE PIPE	---	ANODE	---	PAVEMENT CROWN	---	PAVEMENT CROWN
---	DRAINAGE CONNECTION PIPE	---	HYDRO	---	N/W PROPERTY LINE	---	N/W PROPERTY LINE
○	MANHOLE	●	MTS	○	S/E PROPERTY LINE	○	S/E PROPERTY LINE
□	CATCH BASIN	■	GAS	□	N/W GUTTER	□	N/W GUTTER
△	CURB INLET	▲	TESTHOLE	△	S/E GUTTER	△	S/E GUTTER
▭	CULVERT	▭	LAMP STANDARD	▭		▭	
---	EXISTING	---	LEGEND - PLAN	---	EXISTING	---	LEGEND - PROFILE
---	NEW	---	LEGEND - PLAN	---	NEW	---	LEGEND - PROFILE

UNDERGROUND STRUCTURES		B.M. ELEV.
SUPV. U/G STRUCTURES	DATE	
LOCATION OF UNDERGROUND STRUCTURES AS SHOWN ARE BASED ON THE BEST INFORMATION AVAILABLE. BUT NO GUARANTEE IS GIVEN THAT ALL EXISTING UTILITIES ARE SHOWN OR THAT THE GIVEN LOCATIONS ARE EXACT. CONFIRMATION OF EXISTENCE AND EXACT LOCATION OF ALL SERVICES MUST BE OBTAINED FROM THE INDIVIDUAL UTILITIES BEFORE PROCEEDING WITH CONSTRUCTION.		
0	ISSUED FOR TENDER	17/01/09 Wjd
NO.	REVISIONS	DATE BY

<b>AECOM</b>	
DESIGNED BY	MPG
CHECKED BY	
DRAWN BY	KLC
APPROVED BY	
HOR. SCALE	1:500
RELEASED FOR CONSTRUCTION	
VERTICAL	1:100
DATE	

ENGINEER'S SEAL  
PROVINCE OF MANITOBA  
**M.P.A. GAUDREAU**  
Member  
32167  
REGISTERED PROFESSIONAL ENGINEER

**THE CITY OF WINNIPEG**  
PUBLIC WORKS DEPARTMENT

Waverley Street Underpass at CN Mile 3.89 Rivers Sub  
Contract 2: Underpass Structure, Railworks,  
Roadworks, Land Drainage Sewer, Pumping Station  
and Landscaping Works

CITY DRAWING NUMBER  
U239-2016-C2-CU-014

SHEET 14 OF 41

CONSULTANT DRAWING NUMBER  
C2-CU-014

CONSULTANT PROJECT NUMBER  
60321148

**DETOUR**  
DRAINAGE PLAN 1

PA:60321148-900-Work\9100-DD-CAD-200-SHEETS\Municipal\63353-C2-CU-DeTour-001.dwg