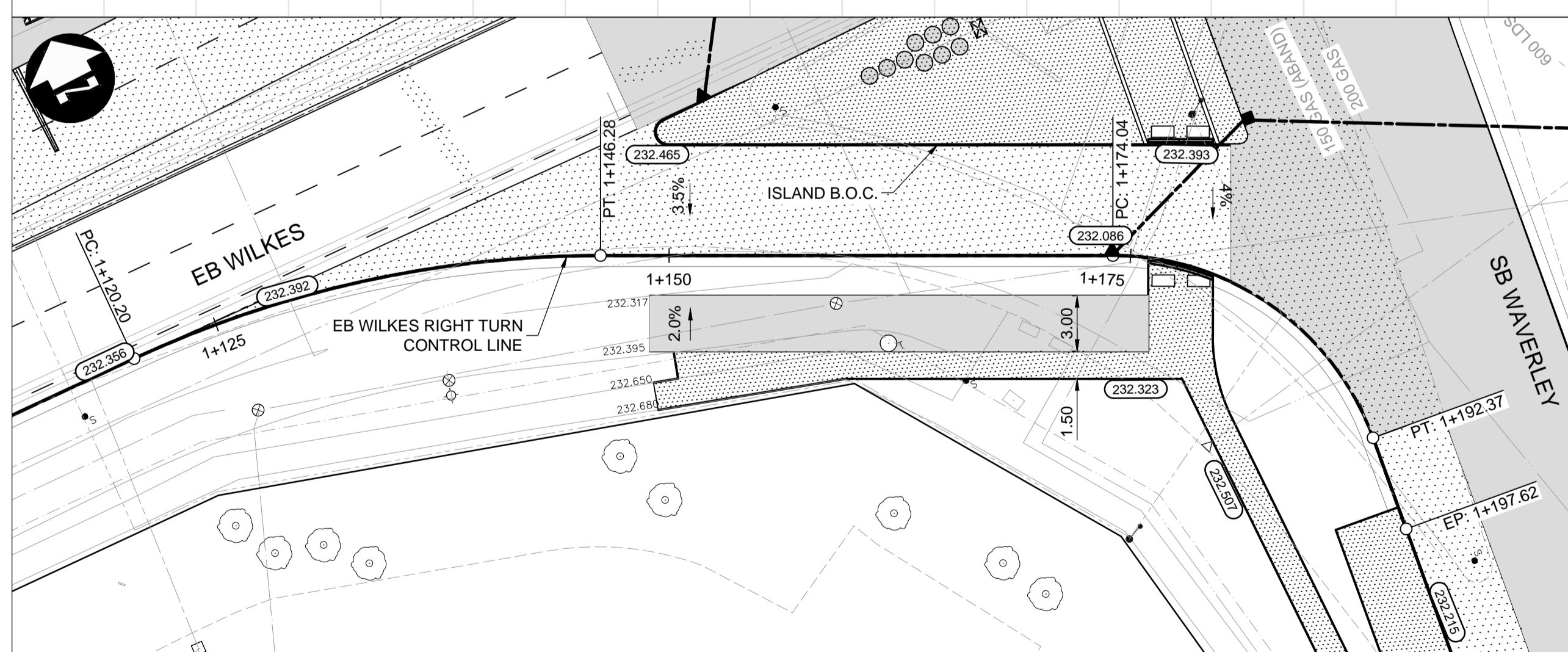
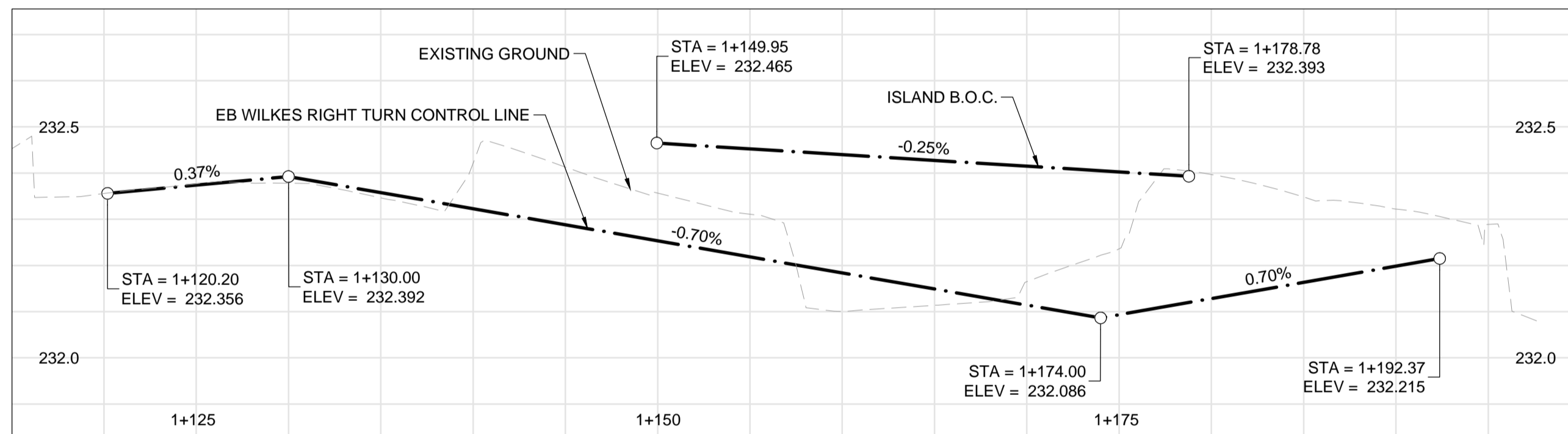
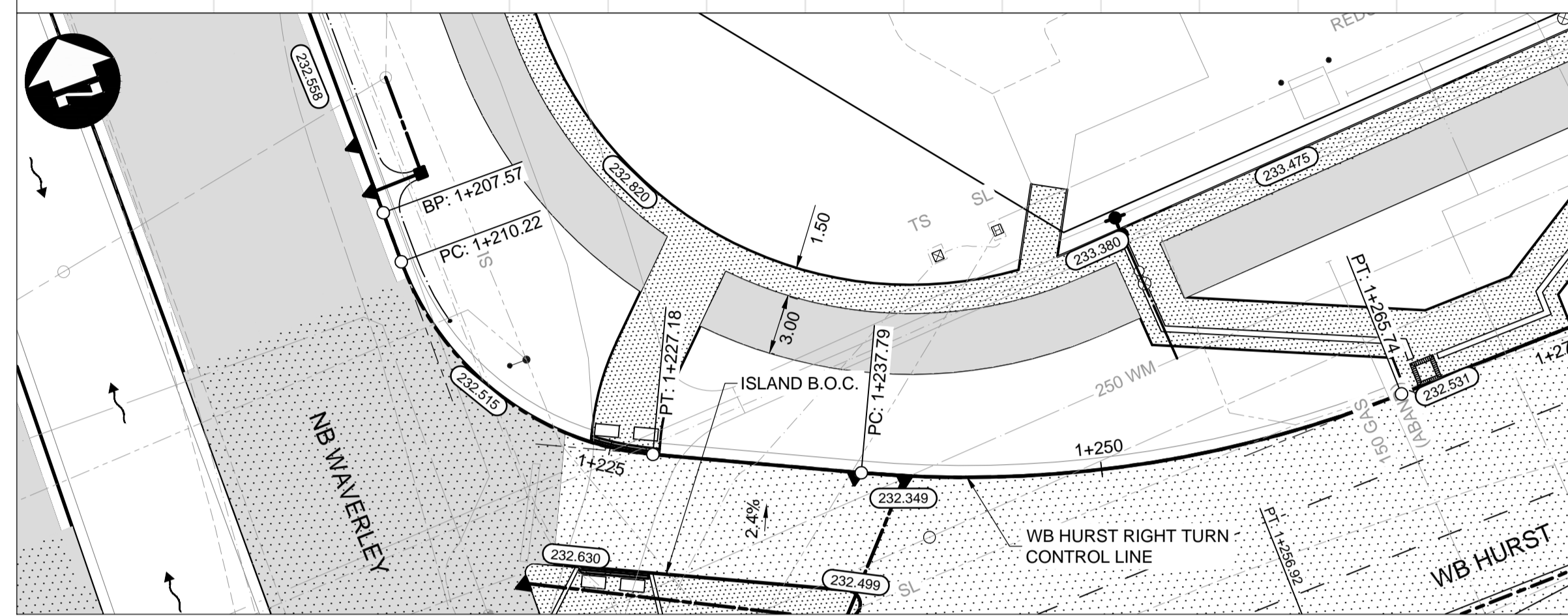
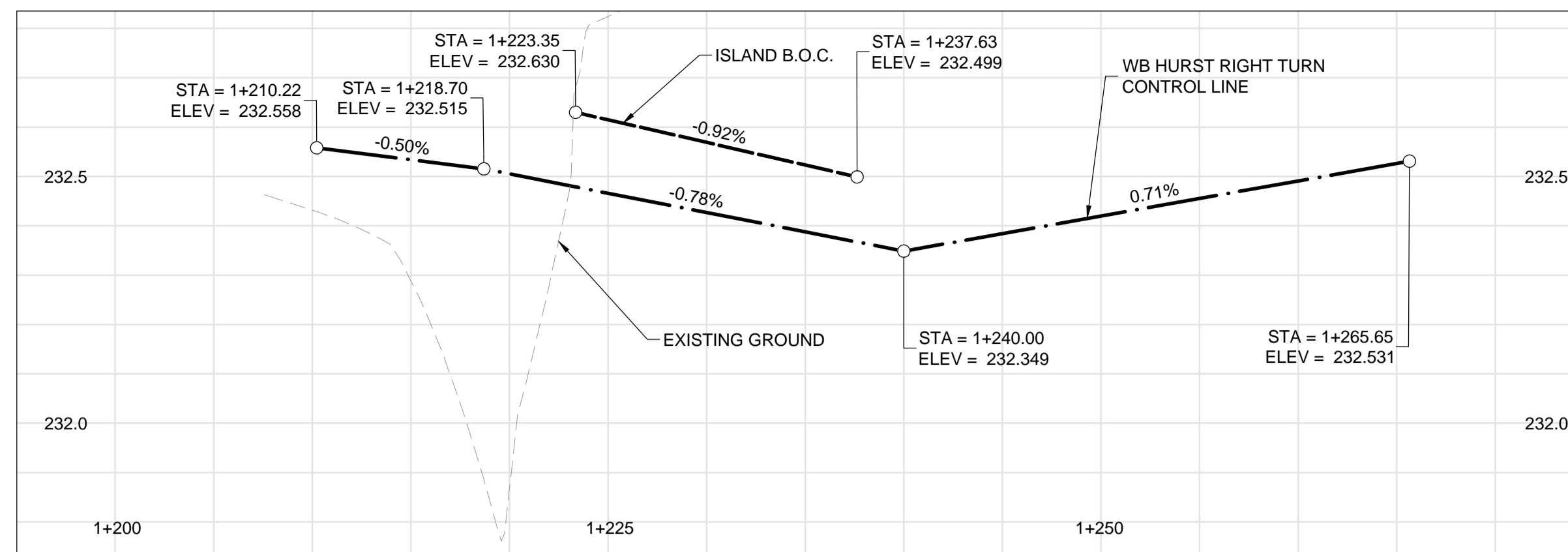


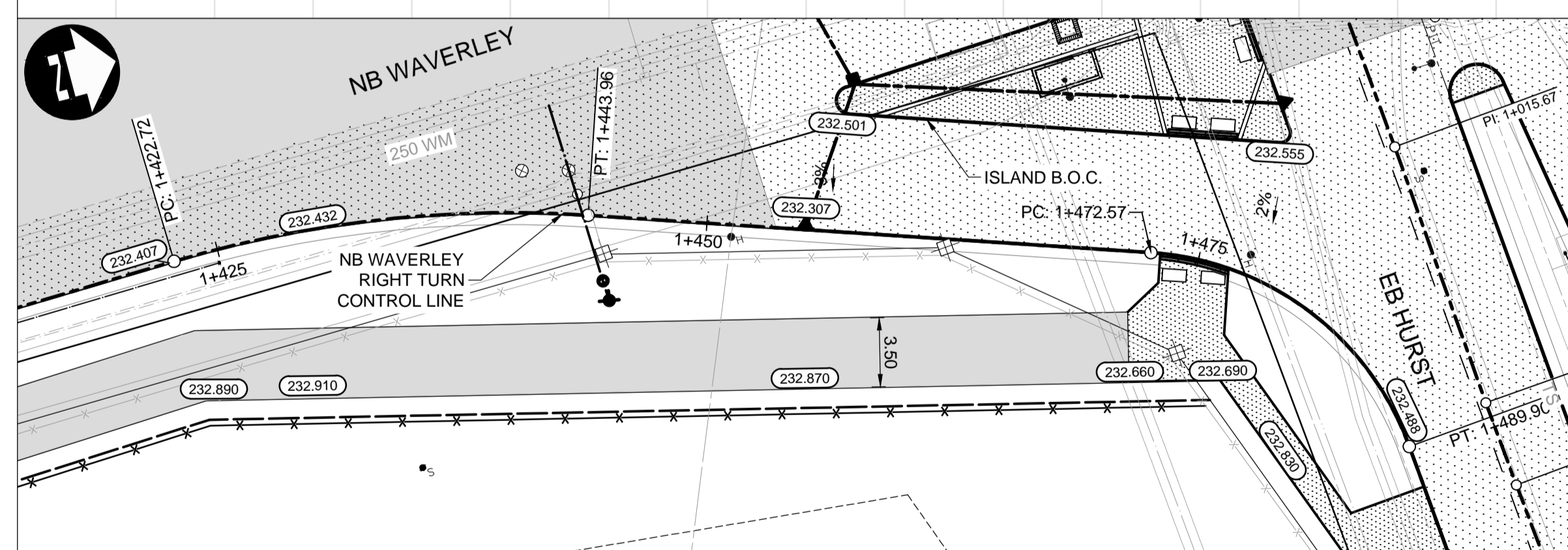
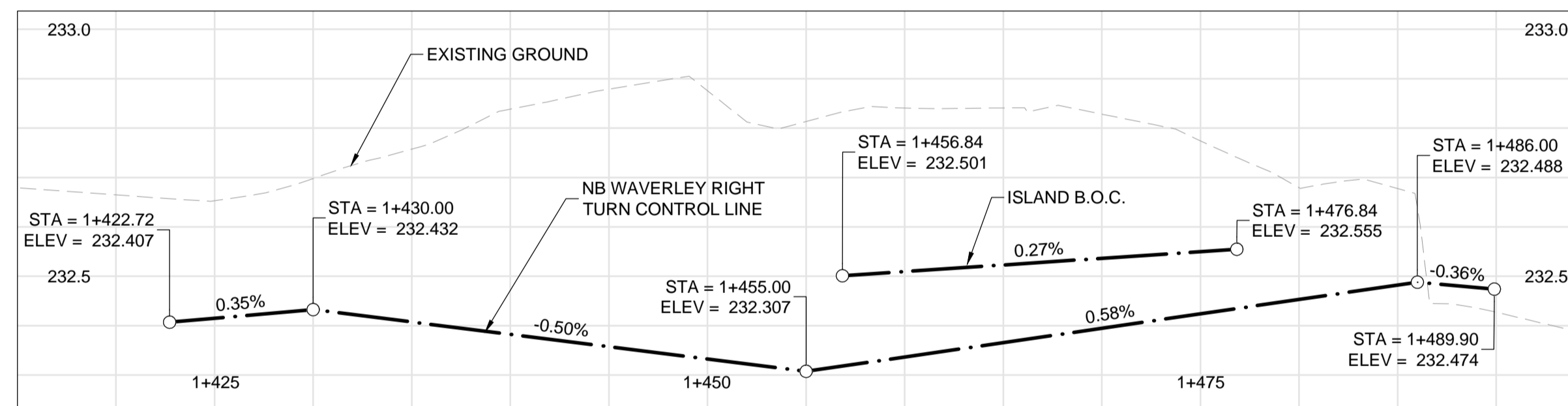
SB WAVERLEY RIGHT TURN TO WB WILKES



EB WILKES RIGHT TURN TO SB WAVERLEY



WB HURST RIGHT TURN TO NB WAVERLEY



NB WAVERLEY RIGHT TURN TO EB HURST

CONSTRUCTION NOTES:

- ISOLATE MISCELLANEOUS ITEMS IN NEW CONCRETE WORKS AS PER SD-228C.
- LEGAL PLAN AND UNDERGROUND INFORMATION FROM CITY OF WINNIPEG L.B.S. CONTRACTOR VERIFY ALL UNDERGROUNDS IN THE FIELD.
- CONTRACTOR TO TAKE PRECAUTIONARY STEPS TO AVOID DAMAGE FROM CONSTRUCTION ACTIVITIES TO TREES WITHIN THE LIMITS OF CONSTRUCTION.
- LOCATION OF EXISTING SERVICES TO BE CONFIRMED IN THE FIELD BY THE CONTRACTOR.
- INSTALL CB LEADS AT MIN. 1.0% SLOPE OR AS DIRECTED BY CONTRACT ADMINISTRATOR.
- FOR CB LEADS, RIP RAP AND LDS INFORMATION SEE "CU" DRAWINGS.
- CONTRACTOR SHALL CONFIRM EXISTING LEAD INVERT ELEVATIONS PRIOR TO INSTALLATION.

METRIC

WHOLE NUMBERS INDICATE MILLIMETRES
DECIMAL NUMBERS INDICATE METRES

WARNING

- IF POWER EQUIPMENT OR EXPLOSIVES ARE TO BE USED FOR EXCAVATION ON THIS PROJECT THE CONTRACTOR MUST:
- NOTIFY THE GAS COMPANY OF THE PROPOSED LOCATION OF EXCAVATION.
 - TAKE PRECAUTION TO AVOID DAMAGE TO GAS COMPANY INSTALLATIONS SEE PROVINCIAL REGULATION 210/72 FOR DETAILS.
 - OBTAIN EXCAVATION PERMITS PRIOR TO CONSTRUCTION.

APEGM
Certificate of Authorization
Dillon Consulting Limited (MB)
No. 1789 Date: 17/01/09

THE CITY OF WINNIPEG
PUBLIC WORKS DEPARTMENT

Waverley Street Underpass at CN Mile 3.89 Rivers Sub
Contract 2: Underpass Structures, Railworks,
Roadworks, Land Drainage Sewer, Pumping Station
and Landscaping Works

Waverley & Hurst-Wilkes
Turn Lanes (Plan-Profile)

CITY DRAWING NUMBER
U-239-2016-C2-CT-063
SHEET 063 OF 081
CONSULTANT DRAWING NUMBER
C2-CT-063

G:\CAD\163353\Technical\Workspack\Engineering\Drawings\Contract\163353-C2-CON-CT-PLAN-PROFILE-TURN-LANES.dwg

EXISTING	LEGEND-PLAN	PROPOSED	EXISTING	LEGEND-PLAN	PROPOSED	EXISTING	LEGEND-PROFILE	PROPOSED
	WATERMAIN			WATERMAIN			WATERMAIN	
	HYDRANT			CONCRETE			CONCRETE	
	VALVE			ASPHALT			ASPHALT	
	MANHOLE			PLANING			PLANING	
	CATCH BASIN			SIDEWALK			SIDEWALK	
	CURB INLET			PAVING STONES			PAVING STONES	
	LAND DRAINAGE SEWER			PARTIAL DEPTH REPAIR			PARTIAL DEPTH REPAIR	
	WASTE WATER SEWER			PROPERTY LINE			PROPERTY LINE	
	HYDRO			DRAINAGE ARROW			DRAINAGE ARROW	
	M.T.S.			CURB RAMP (SD-229C)			CURB RAMP (SD-229C)	
	GAS			DETECTABLE WARNING SURFACE TILE (SD-229AA)			DETECTABLE WARNING SURFACE TILE (SD-229AA)	

UNDERGROUND STRUCTURES

SUPV. U/G STRUCTURES DATE

LOCATION OF UNDERGROUND STRUCTURES AS SHOWN ARE BASED ON THE BEST INFORMATION AVAILABLE BUT NO GUARANTEE IS GIVEN THAT ALL EXISTING UTILITIES ARE SHOWN OR THAT THE GIVEN LOCATIONS ARE EXACT. CONFIRMATION OF EXISTENCE AND EXACT LOCATION OF ALL SERVICES MUST BE OBTAINED FROM THE INDIVIDUAL UTILITIES BEFORE PROCEEDING WITH CONSTRUCTION.

DILLON CONSULTING

DESIGNED BY PMW CHECKED BY RTP
DRAWN BY PMW APPROVED BY DBW

HOR. SCALE 1:250
VERTICAL 1:10

RELEASED FOR CONSTRUCTION

CONSULTANT PROJECT NUMBER 16-3353

ENGINEER'S SEAL

PROVINCE OF MANITOBA
D.B. WIEBE
Member 22480
REGISTERED PROFESSIONAL ENGINEER

ISSUED FOR TENDER 17/01/09 DBW

NO. REVISIONS DATE BY