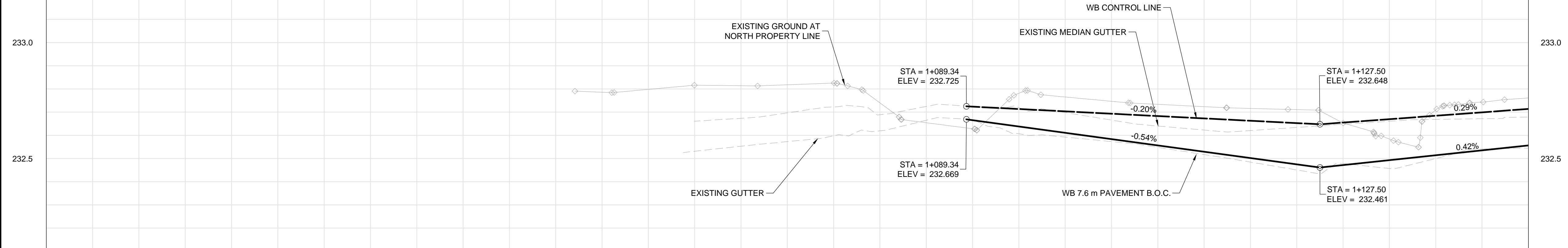
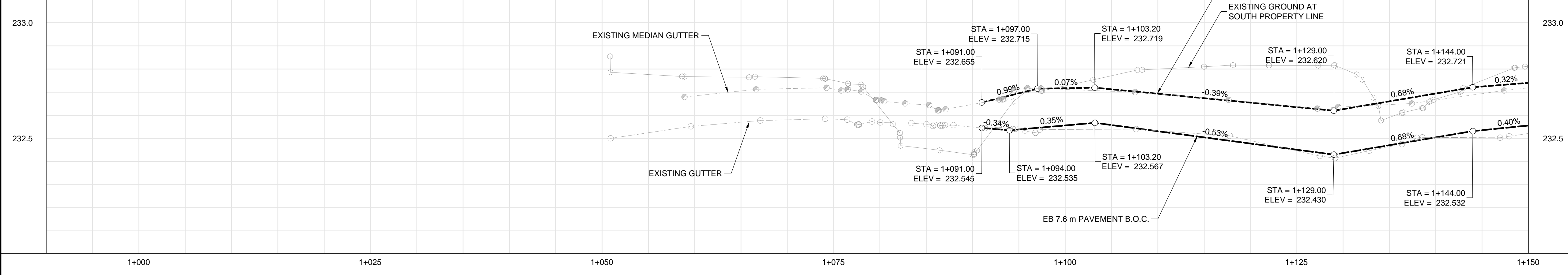


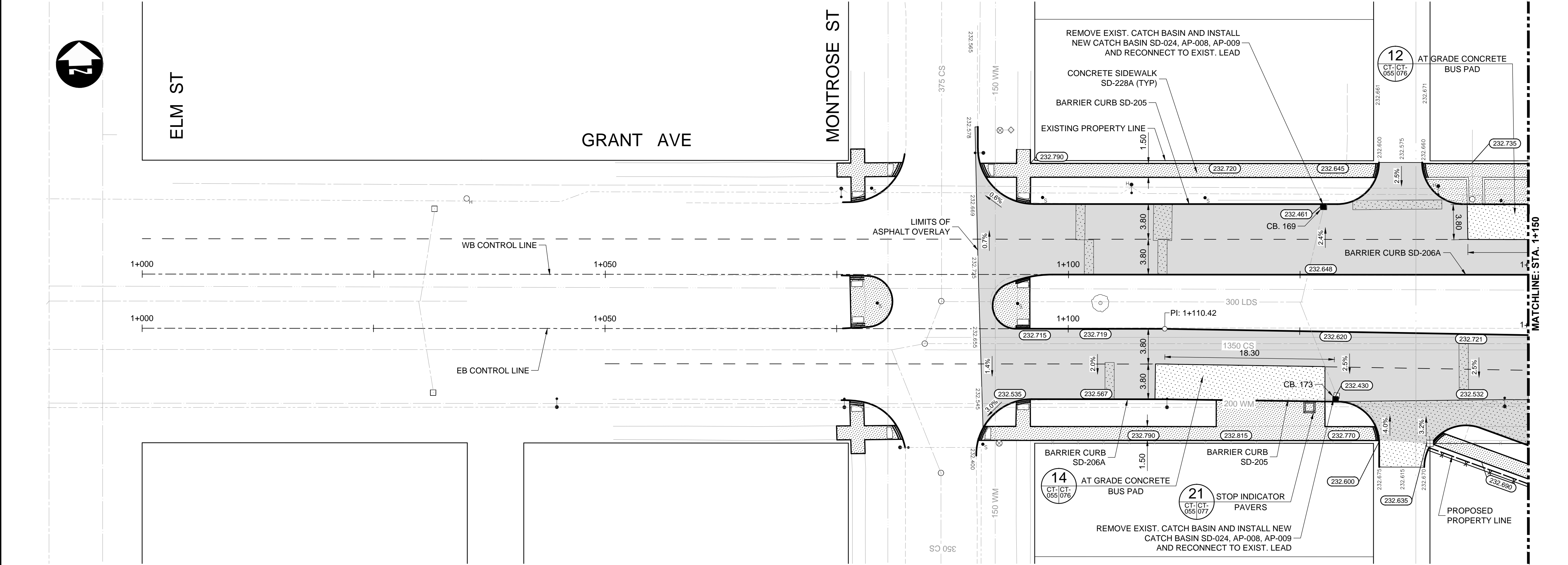
GRANT AVENUE WESTBOUND



GRANT AVENUE EASTBOUND



- CONSTRUCTION NOTES:**
- ISOLATE MISCELLANEOUS ITEMS IN NEW CONCRETE WORKS AS PER SD-228C.
 - LEGAL PLAN AND UNDERGROUND INFORMATION FROM CITY OF WINNIPEG LBIS. CONTRACTOR VERIFY ALL UNDERGROUNDS IN THE FIELD.
 - CONTRACTOR TO TAKE PRECAUTIONARY STEPS TO AVOID DAMAGE FROM CONSTRUCTION ACTIVITIES TO TREES WITHIN THE LIMITS OF CONSTRUCTION.
 - LOCATION OF EXISTING SERVICES TO BE CONFIRMED IN THE FIELD BY THE CONTRACTOR.
 - INSTALL CB LEADS AT MIN. 1.0% SLOPE OR AS DIRECTED BY CONTRACT ADMINISTRATOR.
 - FOR CB LEADS, RIP RAP AND LDS INFORMATION SEE "CU" DRAWINGS.
 - CONTRACTOR SHALL CONFIRM EXISTING LEAD INVERT ELEVATIONS PRIOR TO INSTALLATION.



CATCH BASINS					
CB	STA	AP	RIM	BTM	INV
CB. 169	1+127	AP-008 AP-009	232.461	230.221	230.821
CB. 173	1+129	AP-008 AP-009	232.430	230.190	230.790

METRIC
WHOLE NUMBERS INDICATE MILLIMETRES
DECIMALIZED NUMBERS INDICATE METRES

- WARNING**
- IF POWER EQUIPMENT OR EXPLOSIVES ARE TO BE USED FOR EXCAVATION ON THIS PROJECT THE CONTRACTOR MUST:
- NOTIFY THE GAS COMPANY OF THE PROPOSED LOCATION OF EXCAVATION.
 - TAKE PRECAUTION TO AVOID DAMAGE TO GAS COMPANY INSTALLATIONS SEE PROVINCIAL REGULATION 210/72 FOR DETAILS.
 - OBTAIN EXCAVATION PERMITS PRIOR TO CONSTRUCTION.

APEGM
Certificate of Authorization
Dillon Consulting Limited (MB)
No. 1789 Date: 17/01/09

150 WM	WATERMAIN	150 WM	CONCRETE	150 WM	WATERMAIN	150 WM
+	HYDRANT	+	ASPHALT	+	LAND DRAINAGE SEWER	+
+	VALVE	+	PLANING	+	WASTE WATER SEWER	+
+	MANHOLE	+	SIDEWALK	+	HYDRANT	+
+	CATCH BASIN	+	PAVING STONES	+	VALVE	+
+	CURB INLET	+	PARTIAL DEPTH REPAIR	+	Q PROFILE	+
+	LAND DRAINAGE SEWER	+	PROPERTY LINE	+	NORTH/WEST GUTTER	+
+	WASTE WATER SEWER	+	DRAINAGE ARROW	+	SOUTH/EAST GUTTER	+
+	HYDRO	+	CURB RAMP (SD-229C)	+	NORTH/WEST DITCH	+
+	M.T.S.	+	DETECTABLE WARNING SURFACE TILE (SD-229AA)	+	SOUTH/EAST DITCH	+
+	100 GAS	+		+		+
+	EXISTING	+	LEGEND-PLAN	+	PROPOSED	+

UNDERGROUND STRUCTURES

SUPV. U/G STRUCTURES DATE

LOCATION OF UNDERGROUND STRUCTURES AS SHOWN ARE BASED ON THE BEST INFORMATION AVAILABLE BUT NO GUARANTEE IS GIVEN THAT ALL EXISTING UTILITIES ARE SHOWN OR THAT THE GIVEN LOCATIONS ARE EXACT. CONFIRMATION OF EXISTENCE AND EXACT LOCATION OF ALL SERVICES MUST BE OBTAINED FROM THE INDIVIDUAL UTILITIES BEFORE PROCEEDING WITH CONSTRUCTION.

DILLON CONSULTING

DESIGNED BY: PMW CHECKED BY: RTP
DRAWN BY: PMW APPROVED BY: DBW
HOR. SCALE: 1:250
VERTICAL: 1:10
RELEASED FOR CONSTRUCTION

ENGINEER'S SEAL
PROVINCE OF MANITOBA
REGISTERED PROFESSIONAL ENGINEER
D.B. WIEBE
Member 22480
CONSULTANT PROJECT NUMBER: 16-3353

THE CITY OF WINNIPEG PUBLIC WORKS DEPARTMENT

Waverley Street Underpass at CN Mile 3.89 Rivers Sub
Contract 2: Underpass Structures, Railworks,
Roadworks, Land Drainage Sewer, Pumping Station
and Landscaping Works

CITY DRAWING NUMBER: U-239-2016-C2-CT-055
SHEET OF: 055 OF 081
CONSULTANT DRAWING NUMBER: C2-CT-055

GRANT AVENUE - START TO STA. 1+150 (PLAN-PROFILE)

G:\CAD\163353\Technical\Workspace\Engineering\Drawings and Figures\Roadworks\Contract\163353-C2-CON-CT-PLAN-PROFILE-GRANT.dwg