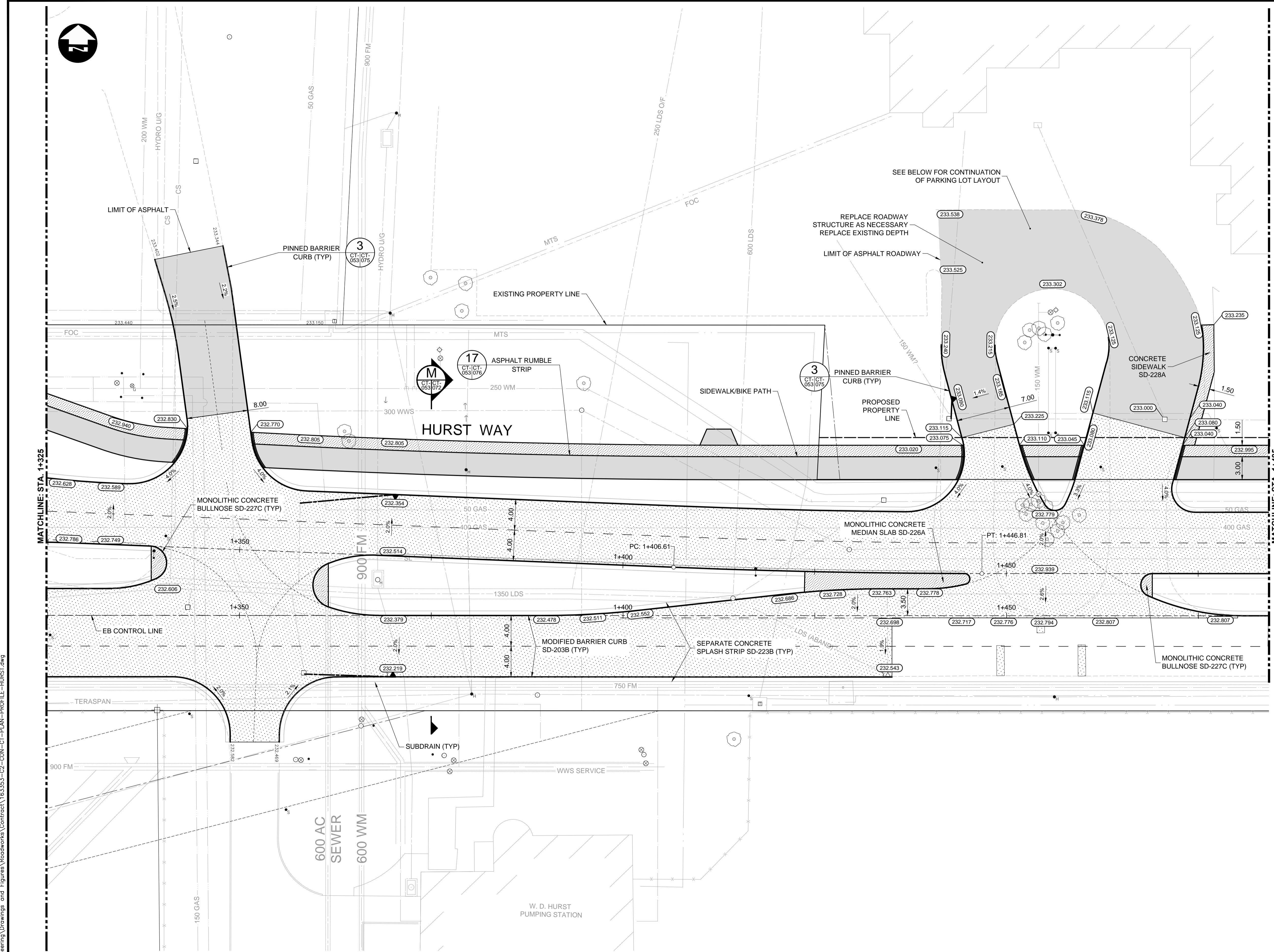


**CONSTRUCTION NOTES:**

- ISOLATE MISCELLANEOUS ITEMS IN NEW CONCRETE WORKS AS PER SD-228C.
- LEGAL PLAN AND UNDERGROUND INFORMATION FROM CITY OF WINNIPEG LBIS. CONTRACTOR VERIFY ALL UNDERGROUNDS IN THE FIELD.
- CONTRACTOR TO TAKE PRECAUTIONARY STEPS TO AVOID DAMAGE FROM CONSTRUCTION ACTIVITIES TO TREES WITHIN THE LIMITS OF CONSTRUCTION.
- LOCATION OF EXISTING SERVICES TO BE CONFIRMED IN THE FIELD BY THE CONTRACTOR.
- INSTALL CB LEADS AT MIN. 1.0% SLOPE OR AS DIRECTED BY CONTRACT ADMINISTRATOR.
- FOR CB LEADS, RIP RAP AND LDS INFORMATION SEE "CU" DRAWINGS.
- CONTRACTOR SHALL CONFIRM EXISTING LEAD INVERT ELEVATIONS PRIOR TO INSTALLATION.



**METRIC**

WHOLE NUMBERS INDICATE MILLIMETRES  
DECIMALIZED NUMBERS INDICATE METRES

**WARNING**

IF POWER EQUIPMENT OR EXPLOSIVES ARE TO BE USED FOR EXCAVATION ON THIS PROJECT THE CONTRACTOR MUST:

- NOTIFY THE GAS COMPANY OF THE PROPOSED LOCATION OF EXCAVATION.
- TAKE PRECAUTION TO AVOID DAMAGE TO GAS COMPANY INSTALLATIONS SEE PROVINCIAL REGULATION 210/72 FOR DETAILS.
- OBTAIN EXCAVATION PERMITS PRIOR TO CONSTRUCTION.



**THE CITY OF WINNIPEG**  
PUBLIC WORKS DEPARTMENT

Waverley Street Underpass at CN Mile 3.89 Rivers Sub  
Contract 2: Underpass Structures, Railworks,  
Roadworks, Land Drainage Sewer, Pumping Station  
and Landscaping Works

WILKES AVENUE-HURST WAY - STA. 1+325  
TO 1+485 (PLAN)

CITY DRAWING NUMBER  
U-239-2016-C2-CT-053  
SHEET 053 OF 081  
CONSULTANT DRAWING NUMBER  
C2-CT-053

EXISTING	LEGEND-PLAN	PROPOSED	EXISTING	LEGEND-PLAN	PROPOSED	EXISTING	LEGEND-PROFILE	PROPOSED
150 WM	WATERMAIN	150 WM	CONCRETE	ASPHALT	150 WM	WATERMAIN	150 WM	WATERMAIN
300 WWS	WASTE WATER SEWER	300 WWS	PAVING STONES	PARTIAL DEPTH REPAIR	300 WWS	WASTE WATER SEWER	300 WWS	WASTE WATER SEWER
250 WWS	WASTE WATER SEWER	250 WWS	PROPERTY LINE	DRAINAGE ARROW	250 WWS	WASTE WATER SEWER	250 WWS	WASTE WATER SEWER
100 GAS	GAS	100 GAS	DRAINAGE ARROW	CURB RAMP (SD-229C)	100 GAS	GAS	100 GAS	GAS
300 LDS	LAND DRAINAGE SEWER	300 LDS	PROPERTY LINE	DETECTABLE WARNING SURFACE TILE (SD-229AA)	300 LDS	LAND DRAINAGE SEWER	300 LDS	LAND DRAINAGE SEWER
250 WWS	WASTE WATER SEWER	250 WWS	DRAINAGE ARROW	CURB RAMP (SD-229C)	250 WWS	WASTE WATER SEWER	250 WWS	WASTE WATER SEWER
150 WM	WATERMAIN	150 WM	CONCRETE	ASPHALT	150 WM	WATERMAIN	150 WM	WATERMAIN
300 WWS	WASTE WATER SEWER	300 WWS	PAVING STONES	PARTIAL DEPTH REPAIR	300 WWS	WASTE WATER SEWER	300 WWS	WASTE WATER SEWER
250 WWS	WASTE WATER SEWER	250 WWS	PROPERTY LINE	DRAINAGE ARROW	250 WWS	WASTE WATER SEWER	250 WWS	WASTE WATER SEWER
100 GAS	GAS	100 GAS	DRAINAGE ARROW	CURB RAMP (SD-229C)	100 GAS	GAS	100 GAS	GAS
300 LDS	LAND DRAINAGE SEWER	300 LDS	PROPERTY LINE	DETECTABLE WARNING SURFACE TILE (SD-229AA)	300 LDS	LAND DRAINAGE SEWER	300 LDS	LAND DRAINAGE SEWER

G:\CAD\163353\Technical\Workspaces\Drawings and Figures\Roadworks\Contract\163353-C2-CON-CT-PLAN-PROFILE-HURST.dwg