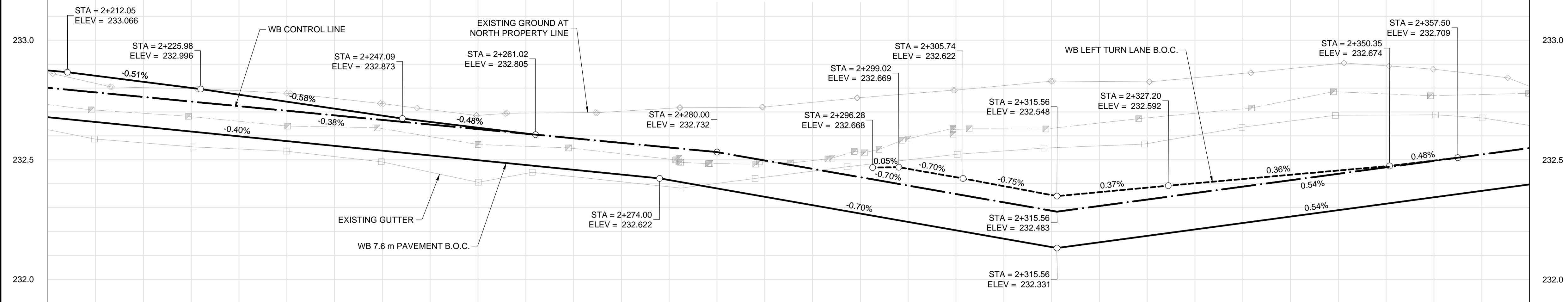
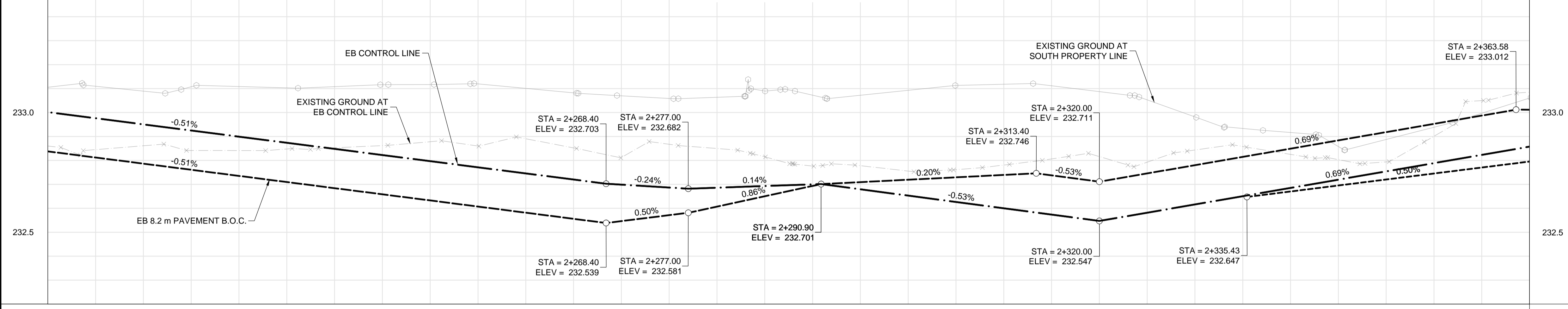


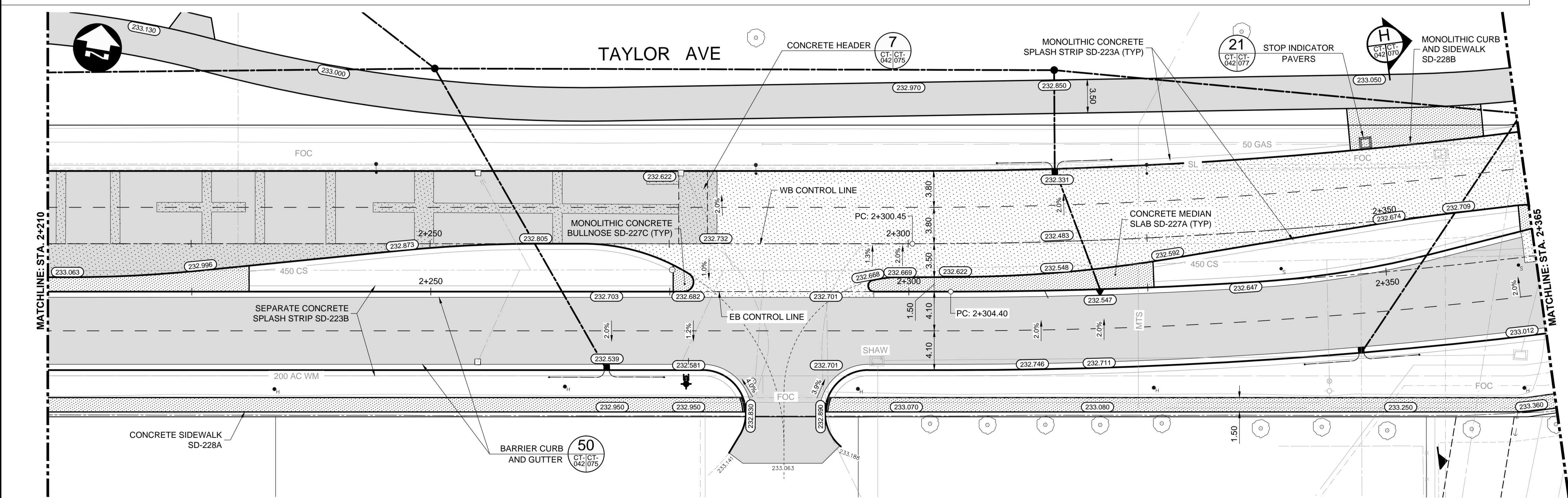
TAYLOR AVENUE WESTBOUND



TAYLOR AVENUE EASTBOUND



- CONSTRUCTION NOTES:**
- ISOLATE MISCELLANEOUS ITEMS IN NEW CONCRETE WORKS AS PER SD-228C.
 - LEGAL PLAN AND UNDERGROUND INFORMATION FROM CITY OF WINNIPEG LBIS. CONTRACTOR VERIFY ALL UNDERGROUNDS IN THE FIELD.
 - CONTRACTOR TO TAKE PRECAUTIONARY STEPS TO AVOID DAMAGE FROM CONSTRUCTION ACTIVITIES TO TREES WITHIN THE LIMITS OF CONSTRUCTION.
 - LOCATION OF EXISTING SERVICES TO BE CONFIRMED IN THE FIELD BY THE CONTRACTOR.
 - INSTALL CB LEADS AT MIN. 1.0% SLOPE OR AS DIRECTED BY CONTRACT ADMINISTRATOR.
 - FOR CB LEADS, RIP RAP AND LDS INFORMATION SEE "CU" DRAWINGS.
 - CONTRACTOR SHALL CONFIRM EXISTING LEAD INVERT ELEVATIONS PRIOR TO INSTALLATION.



METRIC
WHOLE NUMBERS INDICATE MILLIMETRES
DECIMALIZED NUMBERS INDICATE METRES

WARNING
IF POWER EQUIPMENT OR EXPLOSIVES ARE TO BE USED FOR EXCAVATION ON THIS PROJECT THE CONTRACTOR MUST:
1. NOTIFY THE GAS COMPANY OF THE PROPOSED LOCATION OF EXCAVATION.
2. TAKE PRECAUTION TO AVOID DAMAGE TO GAS COMPANY INSTALLATIONS SEE PROVINCIAL REGULATION 210/72 FOR DETAILS.
3. OBTAIN EXCAVATION PERMITS PRIOR TO CONSTRUCTION.



G:\CAD\163353\Technical\Workspaces\Engineering\Drawings and Figures\Roadworks\Contract\163353-C2-CON-CT-PLAN-PROFILE-TAYLOR.dwg

EXISTING	LEGEND-PLAN	PROPOSED	EXISTING	LEGEND-PLAN	PROPOSED	EXISTING	LEGEND-PROFILE	PROPOSED
	WATERMAIN			CONCRETE			WATERMAIN	
	HYDRANT			ASPHALT			LAND DRAINAGE SEWER	
	VALVE			PLANING			WASTE WATER SEWER	
	MANHOLE			SIDEWALK			HYDRANT	
	CATCH BASIN			PAVING STONES			VALVE	
	CURB INLET			PARTIAL DEPTH REPAIR			PROFILE	
	LAND DRAINAGE SEWER			PROPERTY LINE			NORTH/WEST GUTTER	
	WASTE WATER SEWER			DRAINAGE ARROW			SOUTH/EAST GUTTER	
	HYDRO			CURB RAMP (SD-229C)			NORTH/WEST DITCH	
	M.T.S.			DETECTABLE WARNING SURFACE TILE (SD-229AA)			SOUTH/EAST DITCH	
	GAS							

UNDERGROUND STRUCTURES

SUPV. U/G STRUCTURES DATE

LOCATION OF UNDERGROUND STRUCTURES AS SHOWN ARE BASED ON THE BEST INFORMATION AVAILABLE BUT NO GUARANTEE IS GIVEN THAT ALL EXISTING UTILITIES ARE SHOWN OR THAT THE GIVEN LOCATIONS ARE EXACT. CONFIRMATION OF EXISTENCE AND EXACT LOCATION OF ALL SERVICES MUST BE OBTAINED FROM THE INDIVIDUAL UTILITIES BEFORE PROCEEDING WITH CONSTRUCTION.

DILLON CONSULTING

DESIGNED BY RTP CHECKED BY DBW

DRAWN BY RD APPROVED BY DBW

HOR. SCALE 1:250 RELEASED FOR CONSTRUCTION

VERTICAL 1:10

0 ISSUED FOR TENDER 17/01/09 DBW

NO. REVISIONS DATE BY

ENGINEER'S SEAL

PROVINCE OF MANITOBA

D.B. WIEBE

Member 22480

REGISTERED PROFESSIONAL ENGINEER

CONSULTANT PROJECT NUMBER 16-3353

THE CITY OF WINNIPEG
PUBLIC WORKS DEPARTMENT

Waverley Street Underpass at CN Mile 3.89 Rivers Sub Contract 2: Underpass Structures, Railworks, Roadworks, Land Drainage Sewer, Pumping Station and Landscaping Works

TAYLOR AVENUE - STA. 2+210 TO 2+365 (PLAN-PROFILE)

CITY DRAWING NUMBER U-239-2016-C2-CT-042 SHEET 042 OF 081 CONSULTANT DRAWING NUMBER C2-CT-042