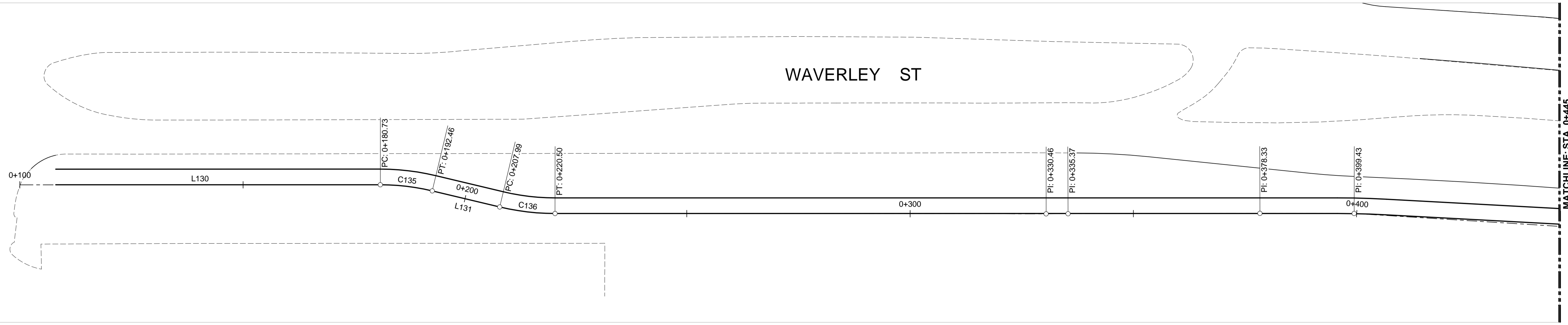
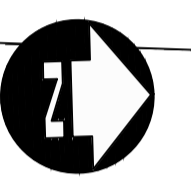


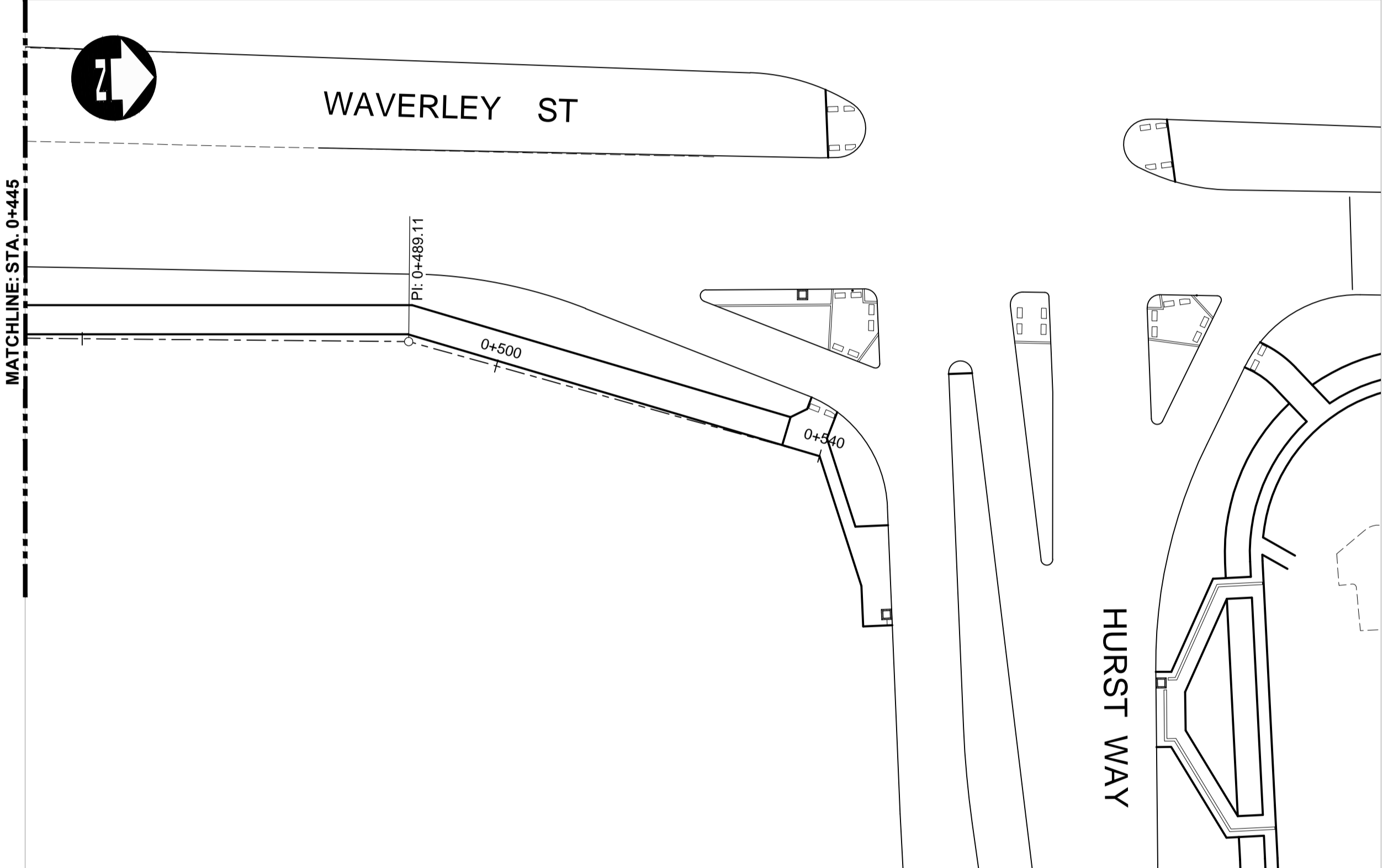
VICTOR LEWIS DR



MATCHLINE: STA. 0+445



WAVERLEY ST



HURST WAY

WAVERLEY MULTI-USE PATH (M.U.P.)						
SEGMENT	STATION (START)	STATION (END)	NORTHING (START)	EASTING (START)	NORTHING (END)	EASTING (END)
L130	0+100.000	0+180.725	5522738.868	630914.613	5522819.571	630912.744
C135	0+180.725	0+192.460	5522819.571	630912.744	5522831.227	630913.846
L131	0+192.460	0+207.986	5522831.227	630913.846	5522846.407	630917.106
C136	0+207.986	0+220.497	5522846.407	630917.106	5522858.834	630918.285

CURVE DATA					
#	R.	Δc	Tc	L.	L.C.
C135	50.000	13°26'49"	5.894	11.735	11.708
C136	53.500	13°23'54"	6.284	12.511	12.482

G:\CAD\163353\Technical\Workspaces\Engineering\Drawings and Figures\Roadworks\Contract\163353-C2-CON-CT-CONTROL-LINE-GEOMETRY-M.U.P.dwg



UNDERGROUND STRUCTURES SUPV. U/G STRUCTURES DATE <small>LOCATION OF UNDERGROUND STRUCTURES AS SHOWN ARE BASED ON THE BEST INFORMATION AVAILABLE. BUT NO GUARANTEE IS GIVEN THAT ALL EXISTING UTILITIES ARE SHOWN OR THAT THE GIVEN LOCATIONS ARE EXACT. CONFIRMATION OF EXISTENCE AND EXACT LOCATION OF ALL SERVICES MUST BE OBTAINED FROM THE INDIVIDUAL UTILITIES BEFORE PROCEEDING WITH CONSTRUCTION.</small>	B.M. ELEV.	SEE SHEET C2-CT-007 FOR CONTROL POINT INFORMATION		ENGINEER'S SEAL 	
	DESIGNED BY: RTP	CHECKED BY: DBW		DESIGNED BY: RTP	
			DRAWN BY: TJH	APPROVED BY: DBW	WAVERLEY STREET UNDERPASS AT CN MILE 3.89 RIVERS SUB CONTRACT 2: UNDERPASS STRUCTURES, RAILWORKS, ROADWORKS, LAND DRAINAGE SEWER, PUMPING STATION AND LANDSCAPING WORKS
			HOR. SCALE: 1:500	RELEASED FOR CONSTRUCTION	
			VERTICAL		SHEET 019 OF 081
0 ISSUED FOR TENDER	17/01/09	DBW			CONSULTANT DRAWING NUMBER: C2-CT-019
NO. REVISIONS	DATE	BY	DATE	DATE	
				CONSULTANT PROJECT NUMBER: 16-3353	CONTROL LINE GEOMETRY WAVERLEY MULTI-USE PATH