

SB WAVERLEY RIGHT TURN TO WB WILKES						
SEGMENT	STATION (START)	STATION (END)	NORTHING (START)	EASTING (START)	NORTHING (END)	EASTING (END)
L60	1+469.696	1+493.866	5523210.910	630827.913	5523211.382	630852.078
C37	1+493.866	1+510.735	5523211.382	630852.078	5523220.172	630865.441
L61	1+510.735	1+526.851	5523220.172	630865.441	5523234.843	630872.109
C38	1+526.851	1+548.444	5523234.843	630872.109	5523255.671	630877.354
L62	1+548.444	1+552.349	5523255.671	630877.354	5523259.567	630877.615

CURVE DATA					
#	R.	Δc	Tc	L.	L.C.
C37	15.000	64°26'06"	9.452	16.869	15.994
C38	60.000	20°37'15"	10.915	21.594	21.478

EB WILKES RIGHT TURN TO SB WAVERLEY						
SEGMENT	STATION (START)	STATION (END)	NORTHING (START)	EASTING (START)	NORTHING (END)	EASTING (END)
L69	1+111.000	1+120.197	5523181.839	630805.144	5523182.013	630814.339
C43	1+120.197	1+146.284	5523182.013	630814.339	5523176.911	630839.713
L70	1+146.284	1+174.043	5523176.911	630839.713	5523165.699	630865.107
C44	1+174.043	1+192.369	5523165.699	630865.107	5523150.977	630874.015
L71	1+192.369	1+197.620	5523150.977	630874.015	5523145.736	630873.665

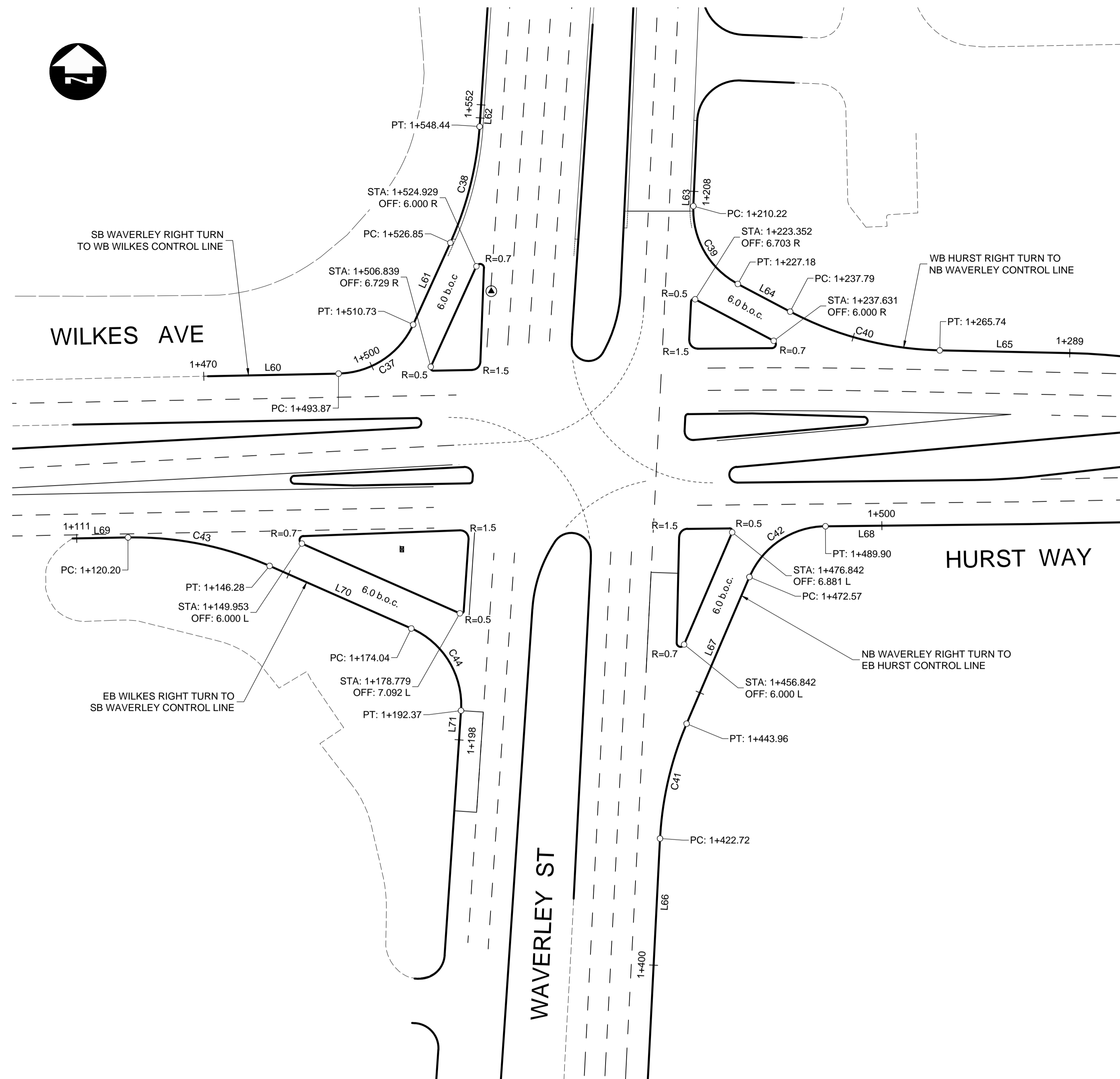
CURVE DATA					
#	R.	Δc	Tc	L.	L.C.
C43	60.000	24°54'39"	13.253	26.087	25.882
C44	15.000	70°00'00"	10.503	18.326	17.207

WB HURST RIGHT TURN TO NB WAVERLEY						
SEGMENT	STATION (START)	STATION (END)	NORTHING (START)	EASTING (START)	NORTHING (END)	EASTING (END)
L63	1+207.571	1+210.222	5523244.056	630915.774	5523241.408	630915.652
C39	1+210.222	1+227.181	5523241.408	630915.652	5523227.455	630923.623
L64	1+227.181	1+237.793	5523227.455	630923.623	5523222.494	630933.004
C40	1+237.793	1+265.735	5523222.494	630933.004	5523215.546	630959.809
L65	1+265.735	1+289.040	5523215.546	630959.809	5523215.062	630983.109

CURVE DATA					
#	R.	Δc	Tc	L.	L.C.
C39	15.000	64°46'32"	9.515	16.958	16.069
C40	60.000	26°41'00"	14.230	27.943	27.691

NB WAVERLEY RIGHT TURN TO EB HURST						
SEGMENT	STATION (START)	STATION (END)	NORTHING (START)	EASTING (START)	NORTHING (END)	EASTING (END)
L66	1+400.000	1+422.723	5523105.351	630908.526	5523128.045	630909.676
C41	1+422.723	1+443.963	5523128.045	630909.676	5523148.629	630914.443
L67	1+443.963	1+472.570	5523148.629	630914.443	5523174.927	630925.705
C42	1+472.570	1+489.902	5523174.927	630925.705	5523184.021	630939.333
L68	1+489.902	1+504.628	5523184.021	630939.333	5523184.179	630954.058

CURVE DATA					
#	R.	Δc	Tc	L.	L.C.
C41	60.000	20°16'56"	10.732	21.239	21.129
C42	15.000	66°12'15"	9.779	17.332	16.384



LEGEND	
b.o.c.	- BACK OF CURB
f.o.g.	- FACE OF 600mm WIDE CURB AND GUTTER PAN



UNDERGROUND STRUCTURES SUPV. U/G STRUCTURES DATE	B.M. ELEV. SEE SHEET C2-CT-007 FOR CONTROL POINT INFORMATION		ENGINEER'S SEAL 		THE CITY OF WINNIPEG PUBLIC WORKS DEPARTMENT
			DESIGNED BY RTP CHECKED BY DBW DRAWN BY TJH APPROVED BY DBW HOR. SCALE 1:500 RELEASED FOR CONSTRUCTION VERTICAL DATE		
LOCATION OF UNDERGROUND STRUCTURES AS SHOWN ARE BASED ON THE BEST INFORMATION AVAILABLE, BUT NO GUARANTEE IS GIVEN THAT ALL EXISTING UTILITIES ARE SHOWN OR THAT THE GIVEN LOCATIONS ARE EXACT. CONFIRMATION OF EXISTENCE AND EXACT LOCATION OF ALL SERVICES MUST BE OBTAINED FROM THE INDIVIDUAL UTILITIES BEFORE PROCEEDING WITH CONSTRUCTION.			WAYERLEY STREET UNDERPASS AT CN MILE 3.89 RIVERS SUB CONTRACT 2: UNDERPASS STRUCTURES, RAILWORKS, ROADWORKS, LAND DRAINAGE SEWER, PUMPING STATION AND LANDSCAPING WORKS		

G:\CAD\163353\Technical\Workspaces\Engineering\Drawings and Figures\Roadworks\Contract\163353-C2-CON-CT-CONTROL-LINE-GEOMETRY.dwg