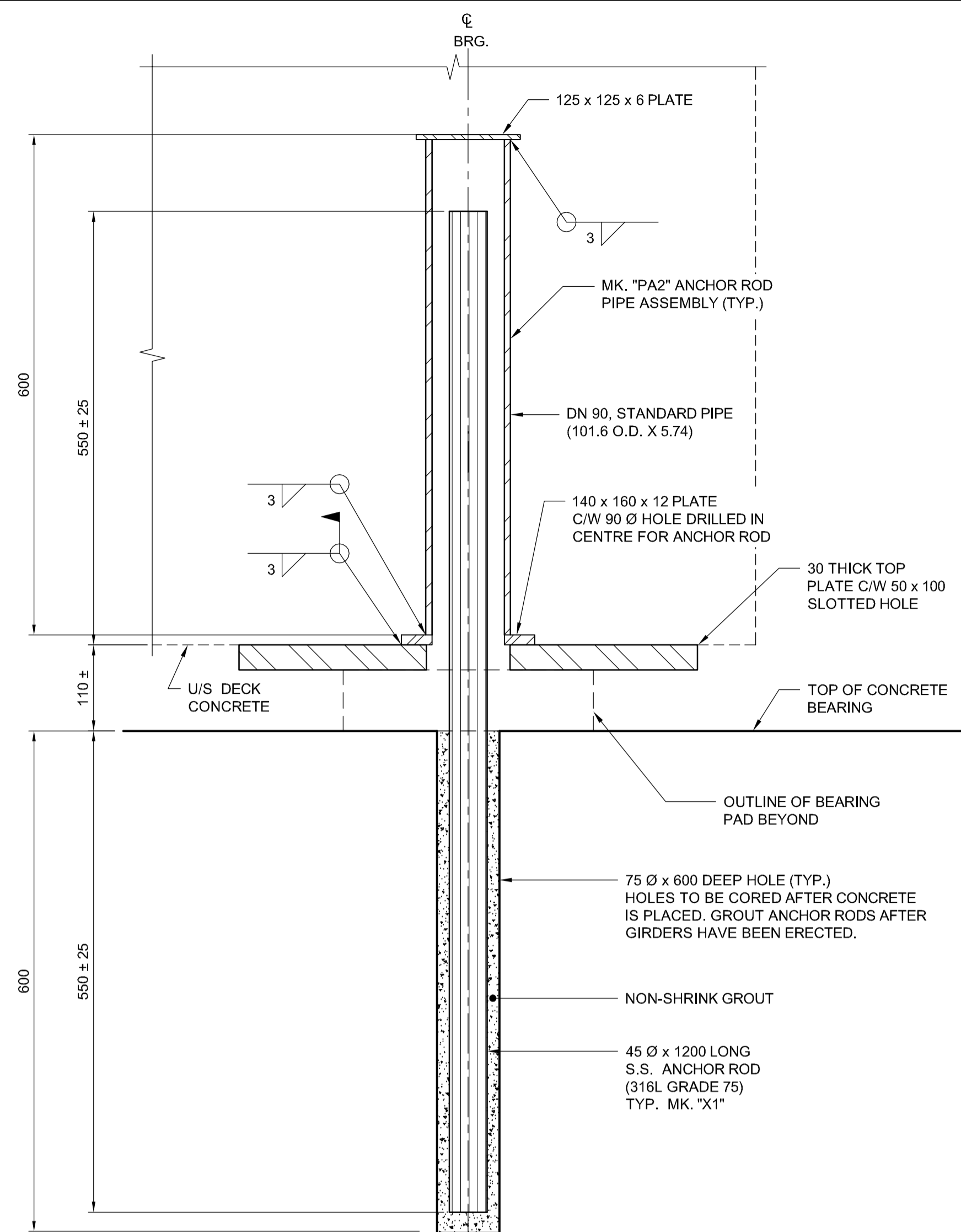


AT FIXED END

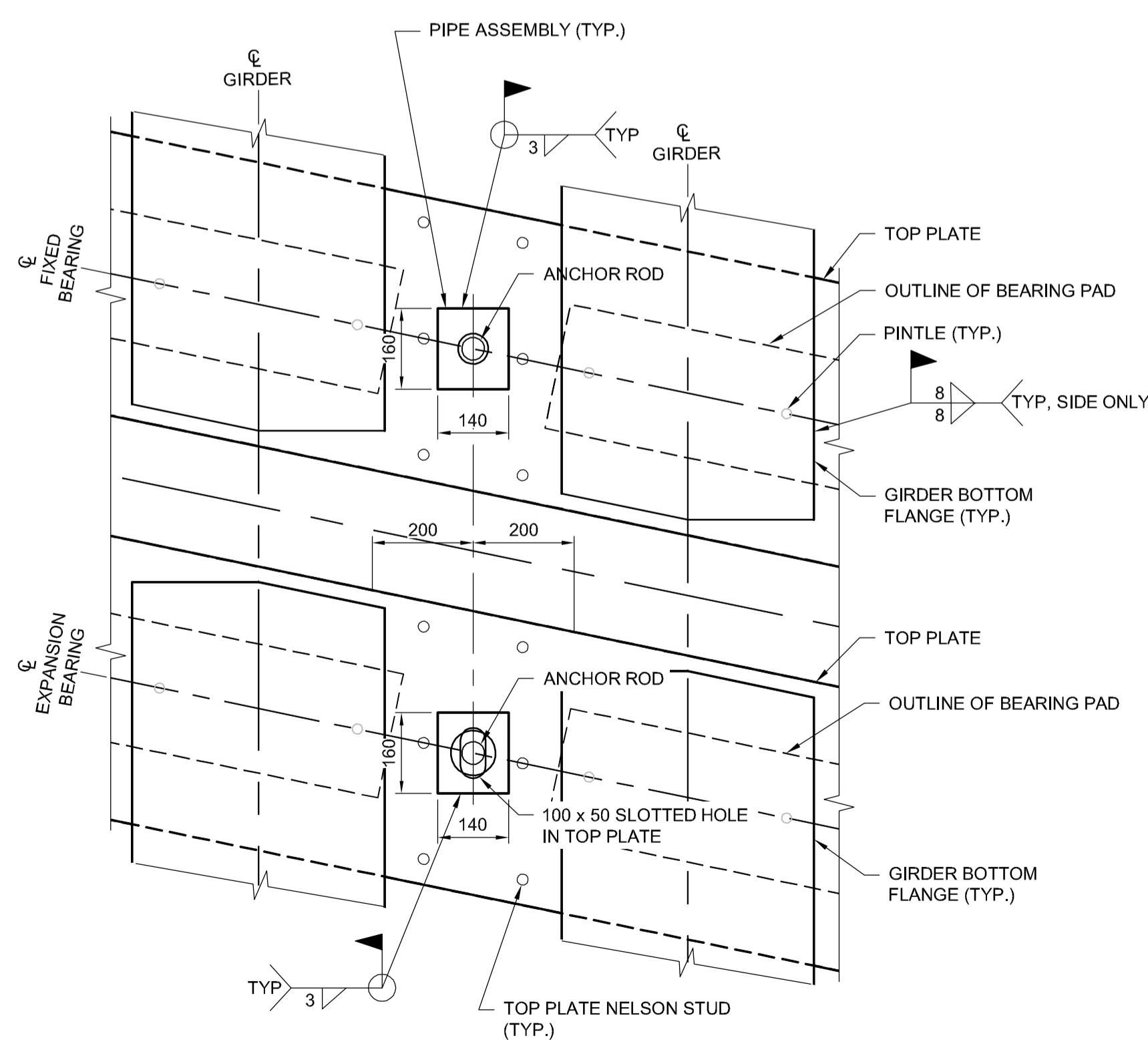


AT EXPANSION END

ANCHORAGE DETAIL  
SCALE 1:5

NOTES:

- FOR ANCHOR RODS LOCATION REFER TO SHEET 024
- GALVANIZE PIPE ASSEMBLY AFTER FABRICATION IN ACCORDANCE WITH ASTM A123 TO A NET RETENTION OF 610 g/m<sup>2</sup> UNLESS NOTED OTHERWISE.
- GALVANIZE TOP PLATE AFTER FABRICATION IN ACCORDANCE WITH ASTM A123 TO A NET RETENTION OF 610 g/m<sup>2</sup> UNLESS NOTED OTHERWISE.
- WHERE GALVANIZING IS DAMAGED, REPAIR WITH TWO COATS OF ONE COMPONENT ZINC-RICH COATING CONTAINING 96% NON-TOXIC ELECTROLYTIC ZINC POWDER (PURE TO 99.995%) AND NON-TOXIC SOLVENT.
- PRIOR TO APPLYING FIELD WELDING AT GALVANIZED SURFACES, GALVANIZING SHALL BE GROUND OFF.
- SURFACES TO RECEIVE FIELD APPLIED GALVANIZING SHALL BE CLEANED IN ACCORDANCE WITH SPECIFICATIONS.
- FIELD APPLIED GALVANIZING SHALL BE BLENDED INTO EXISTING GALVANIZING OF SURROUNDING SURFACES IN ACCORDANCE WITH SPECIFICATIONS.



TYPICAL ANCHOR LOCATION  
SCALE 1:10

BILL OF MISCELLANEOUS METAL FOR BEARINGS					
MARK	No.	DESCRIPTION	LOCATION	COMPONENT MASS	TOTAL MASS
TPF	4	TOP PLATE - 30 x 550 x 8896 (AS DETAILED) C/W 64-22 DIA. x 200 LG NELSON STUDS	SU. 1, 2, 4 & 5	1 152.12	4 608.50
TPE	4	TOP PLATE - 30 x 550 x 8896 (AS DETAILED) C/W 64-22 DIA. x 200 LG NELSON STUDS	SU. 2, 3 & 4	1 152.12	4 608.50
PA1	16	PIPE ASSEMBLY - FIXED, EACH TO BE FABRICATED FROM:	SU. 1, 2, 4 & 5		106.88
		1 - DN 50, XS PIPE 60.3 O.D. x 5.54 x 600 LG		4.49	
		1 - PL 12 x 140 x 160 (C/W 50 DIA. HOLE DRILLED IN CENTRE FOR ANCHOR ROD)		1.93	
		1 - PL 6 x 75 x 75		0.26	
PA2	16	PIPE ASSEMBLY - EXPANSION, EACH TO BE FABRICATED FROM:	SU. 2, 3 & 4		166.56
		1 - DN 90, STANDARD PIPE 101.6 O.D. x 5.74 x 600 LG		8.16	
		1 - PL 12 x 140 x 160 (C/W 90 DIA. HOLE DRILLED IN CENTRE FOR ANCHOR ROD)		1.51	
		1 - PL 6 x 125 x 125		0.74	
X1	32	ANCHOR RODS, 45 DIA. x 1200 LONG, S.S. 316L GRADE 75	SU. 1, 2, 3, 4 & 5	15.25	488.00
				TOTAL MASS (kg) = 9 978.44	



DESIGNED BY	RE	CHECKED BY	SSR
DRAWN BY	NBG	APPROVED BY	DBW
HOR. SCALE	AS SHOWN	RELEASED FOR CONSTRUCTION	
VERTICAL	AS SHOWN		
NO.	REVISIONS	DATE	BY
0	ISSUED FOR TENDER	17/01/09	RE

ENGINEER'S SEAL  
PROVINCE OF MANITOBA  
**R.B. ERIC**  
Member 22665  
REGISTERED PROFESSIONAL ENGINEER  
CONSULTANT PROJECT NUMBER  
**16-3353**

**THE CITY OF WINNIPEG**  
PUBLIC WORKS DEPARTMENT  
Waverley Street Underpass at CN Mile 3.89 Rivers Sub  
Contract 2: Underpass Structure, Railworks,  
Roadworks, Land Drainage Sewer, Pumping Station  
and Landscaping Works  
CITY DRAWING NUMBER  
U-239-2016-C2-CS-026  
SHEET 026 OF 085  
CONSULTANT DRAWING NUMBER  
C2-CS-026  
BEARING DETAILS - SHEET 2

G:\CAD\163353\Technical\Workspace\Engineering\Drawings and Figures\Structures\C2-CON-CS-BEARING DETAILS 2.dwg