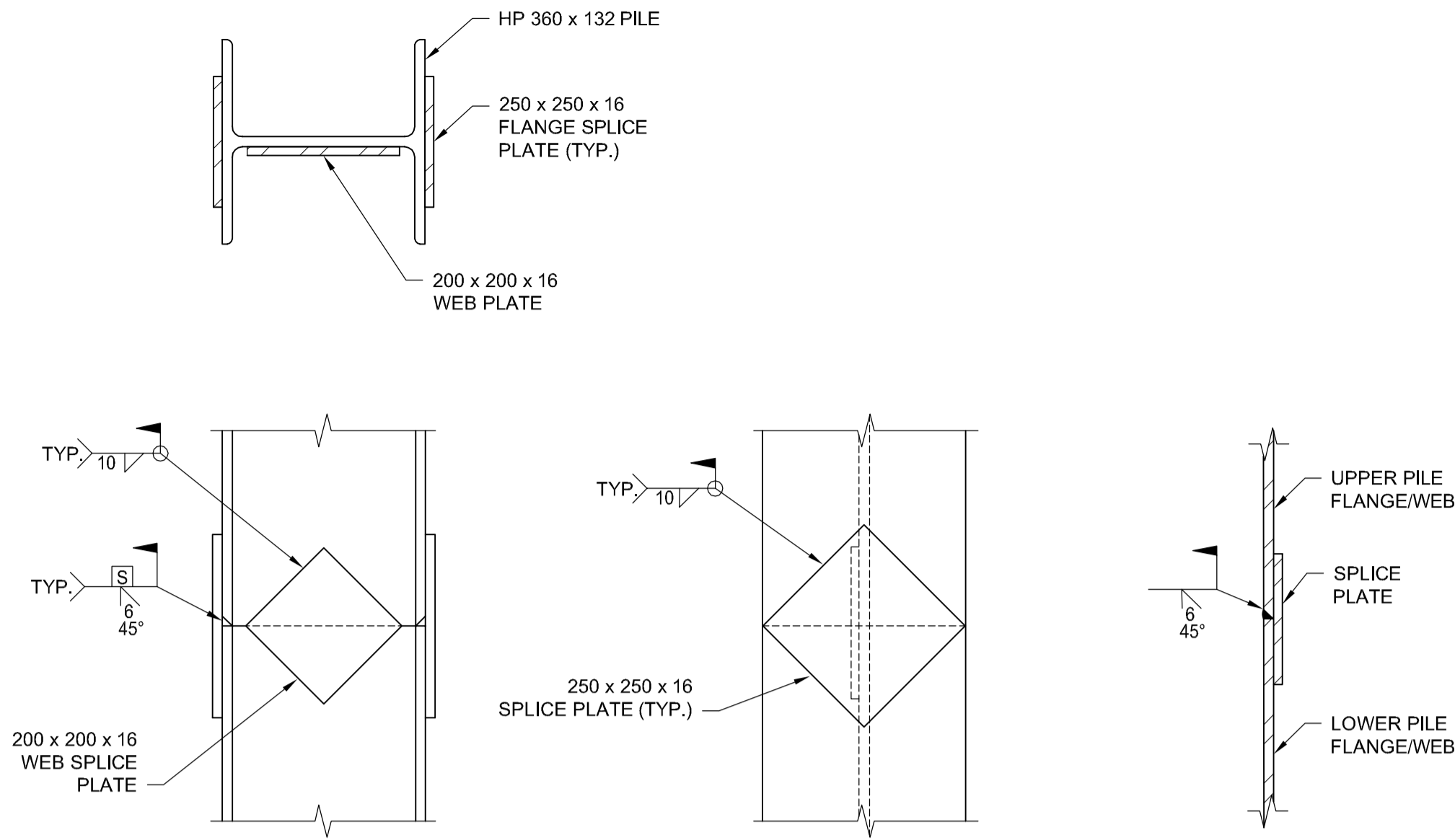


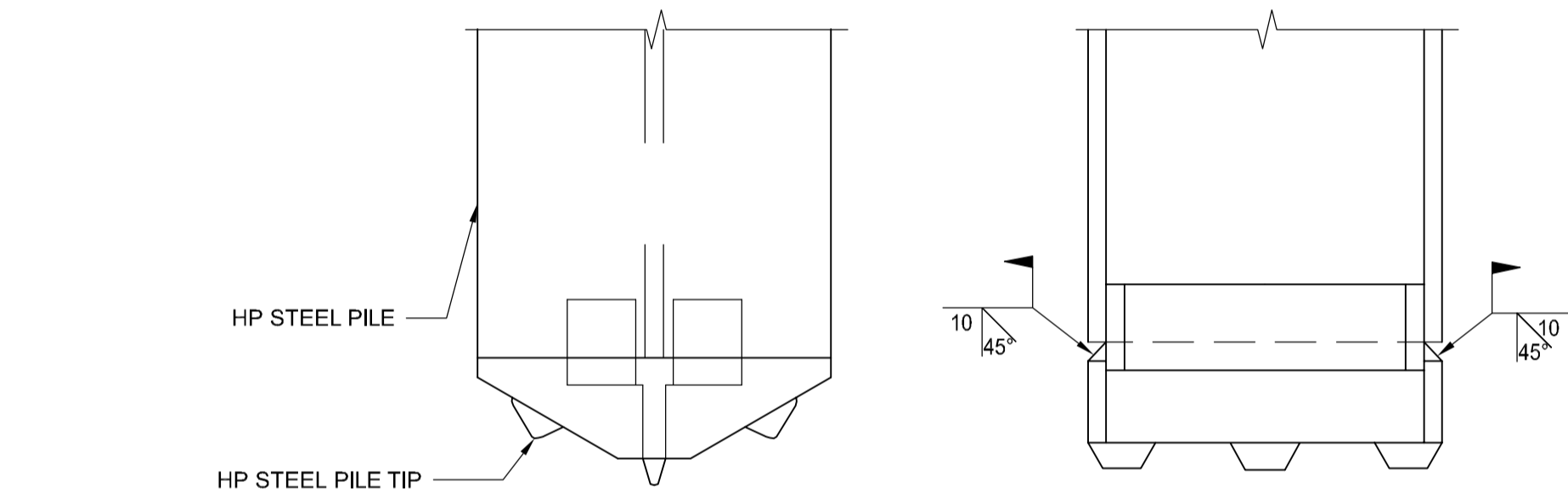
G:\CAD\163353\Technical Workspace\Engineering\Drawings and Figures\Structures\Engineering\Drawings and Figures\CON-C2-CS-PILE DETAILS 1.dwg



DETAIL OF STEEL HP PILE SPLICE
N.T.S.

STEEL HP PILE SPLICE WELDING NOTES:

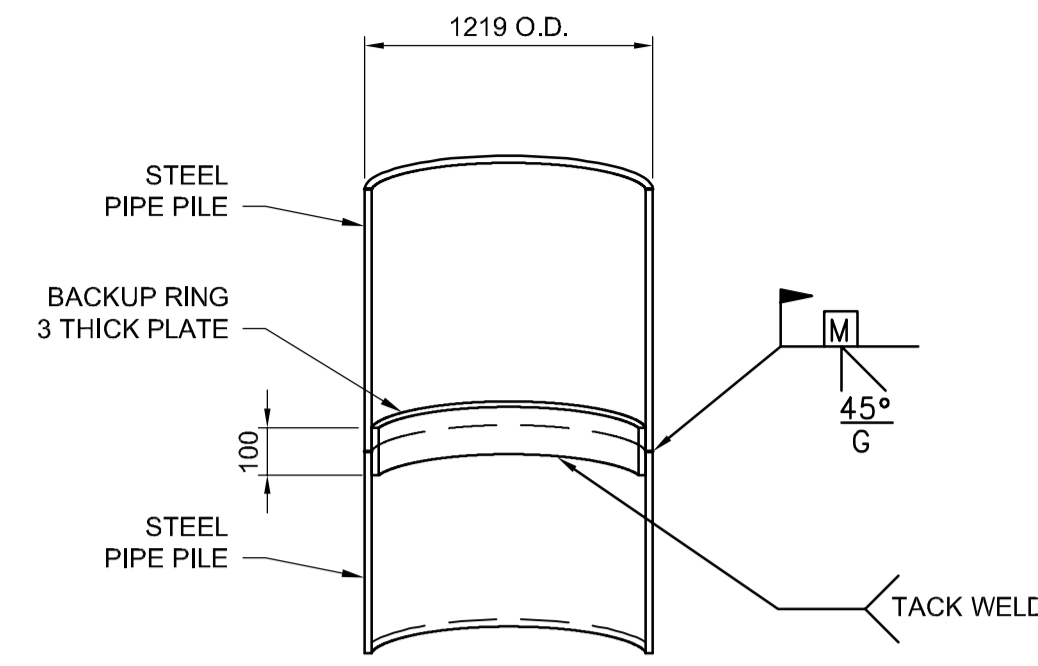
1. LOW HYDROGEN E70 (E48018 METRIC) SERIES ELECTRODE SHALL BE USED
2. THE MINIMUM ROOT PASS SHALL BE 6 mm.



DETAIL OF STEEL HP PILE TIP
N.T.S.

STEEL HP PILE TIP NOTES:

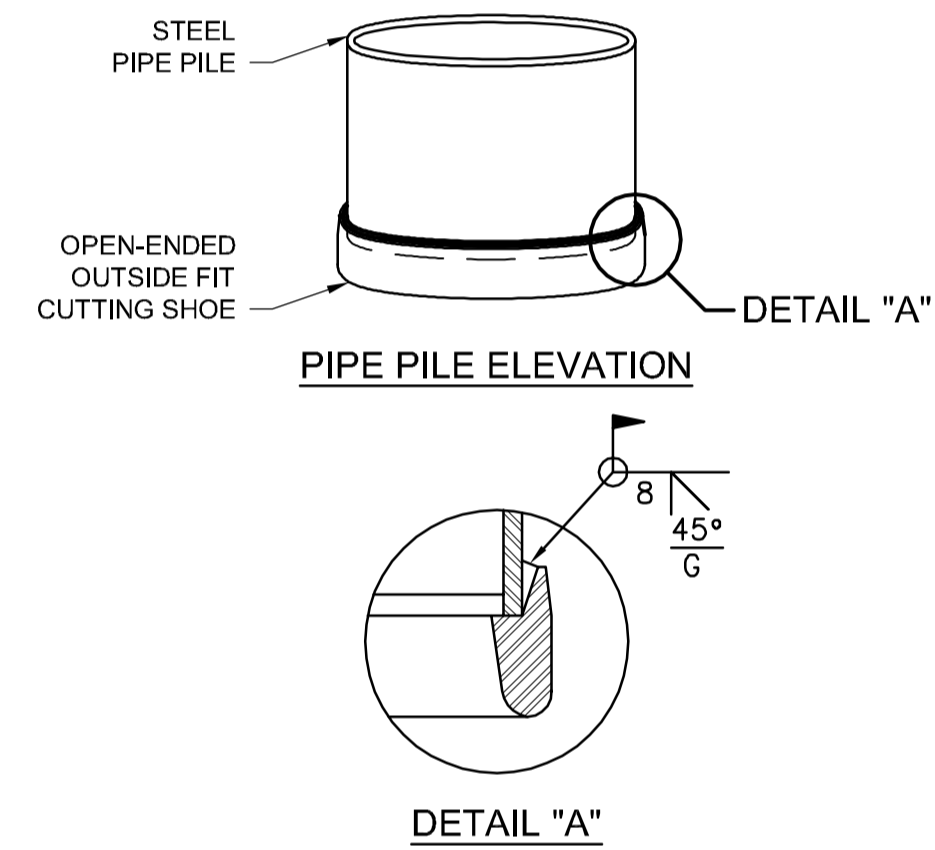
1. EDGES OF HP STEEL PILE TIP TO BE GROUND ON 45° BEVEL FOR 10 mm.
2. LOW HYDROGEN E70 (E48018 METRIC) SERIES ELECTRODES SHALL BE USED.
3. THE MINIMUM ROOT PASS SHALL BE 6 mm.



WELDING NOTES:

1. LOW HYDROGEN E70 (E48018 METRIC) SERIES ELECTRODES SHALL BE USED.
2. THE MINIMUM ROOT PASS SHALL BE 6 mm.

SECTION THROUGH PIPE PILE SPLICE
N.T.S.



STEEL PIPE PILE CUTTING SHOE DETAIL
N.T.S.

STEEL PILE SPLICING GENERAL NOTES:

1. PILE ENDS TO BE SPLICED SHALL BE FLAMED CUT USING A STEEL GUIDE TO OBTAIN A SQUARE AND EVEN CUT. BEVEL CUT SHALL BE MADE AT 45°. SPLICE PLATES SHALL BE WELDED TO THE UPPER PILE BEFORE POSITIONING. THE UPPER PILE SHALL BE POSITION ON AND THE SPLICE PLATES WELDED TO THE LOWER PILE. BUTT WELDS SHALL THE BE MADE.
2. ALL WELDING SHALL BE PERFORMED TO C.S.A. W59 BY QUALIFIED WELDERS WITH VALID "S" CLASSIFICATION CLASS "H" CERTIFICATES ISSUED BY THE CANADIAN WELDING BUREAU.
3. WHEN THE AIR TEMPERATURE IS BELOW 0°C ALL MATERIALS TO BE WELDED SHALL BE PREHEATED TO 100°C FOR A DISTANCE OF 80 mm BEYOND THE WELD AND SHALL BE SHELTERED FROM THE WIND.
4. WHEN THE AIR TEMPERATURE IS BELOW -18°C WELDING WILL NOT BE PERMITTED UNLESS SUITABLE HOARDING APPROVED BY THE ENGINEER IS PROVIDED.

BILL OF STEEL PIPE CASING				
LOCATION	DESCRIPTION	No.	ESTIMATED LENGTH (m)	ESTIMATED TOTAL LENGTH (m)
SU. 2	STEEL PIPE CASING - 1219 O.D. x 19.1 THK. - VERTICAL	3	23.00	69.00
SU. 3	STEEL PIPE CASING - 1219 O.D. x 19.1 THK. - VERTICAL	3	23.00	69.00
SU. 4	STEEL PIPE CASING - 1219 O.D. x 19.1 THK. - VERTICAL	3	23.00	69.00
SU. 2 TO SU. 4	OPEN-ENDED CUTTING SHOE FOR PIPE CASING	9		-
TOTAL LENGTH 1219 O.D. x 19.1 THK STEEL PIPE CASING				207.00 m

BILL OF STEEL H PILES				
LOCATION	DESCRIPTION	No.	ESTIMATED LENGTH (m)	ESTIMATED TOTAL LENGTH (m)
SU. 1 (ABUTMENT)	HP 360X132 - VERTICAL	8	16.00	128.00
SU. 1 (ABUTMENT)	HP 360X132 - BATTERED	8	17.00	136.00
SU. 1 (WINGWALL)	HP 360X132	2	18.00	36.00
SU. 5 (ABUTMENT)	HP 360X132 - VERTICAL	8	16.00	128.00
SU. 5 (ABUTMENT)	HP 360X132 - BATTERED	8	17.00	136.00
SU. 5 (WINGWALL)	HP 360X132	2	18.00	36.00
SU. 1 & SU. 5	HARD-BITE POINT HP-77750-B FOR HP 360 x 132 PILES	36		-
TOTAL LENGTH OF HP 360 x 132 PILES				600.00 m

STEEL H PILE ELEVATIONS

LOCATION	DESCRIPTION	PILE CUT-OFF ELEVATION (m)	ESTIMATED PILE TIP ELEVATION (m)
SU. 1 (ABUTMENT)	HP 360X132	229.605	215.00
SU. 1 (WINGWALL)	HP 360X132	232.530	215.00
SU. 5 (ABUTMENT)	HP 360X132	229.583	215.00
SU. 5 (WINGWALL)	HP 360X132	232.530	215.00

NOTE:
THE PILE AND CAISSON ELEVATIONS SHOWN ON THE DRAWINGS ARE APPROXIMATE ONLY. REFER TO THE TEST HOLE LOGS AND ALL OTHER AVAILABLE INFORMATION TO GAIN MORE KNOWLEDGE ABOUT THE SURFACE AND SUBSURFACE CONDITIONS.



NO.	REVISIONS	DATE	BY	DATE
0	ISSUED FOR TENDER	17/01/09	RE	

DILLON CONSULTING	
DESIGNED BY: RE	CHECKED BY: SSR
DRAWN BY: CGC	APPROVED BY: DBW
HOR. SCALE: AS SHOWN	RELEASED FOR CONSTRUCTION
VERTICAL: AS SHOWN	

ENGINEER'S SEAL

 CONSULTANT PROJECT NUMBER
16-3353

THE CITY OF WINNIPEG
PUBLIC WORKS DEPARTMENT

Waverley Street Underpass at CN Mile 3.89 Rivers Sub
CONTRACT 2: UNDERPASS STRUCTURE, RAILWORKS, ROADWORKS, LAND DRAINAGE SEWER, PUMPING STATION AND LANDSCAPING WORKS

CITY DRAWING NUMBER: U-239-2016-C2-CS-015
 SHEET **015** OF **085**
 CONSULTANT DRAWING NUMBER: **C2-CS-015**

FOUNDATION DETAILS - SHEET 1