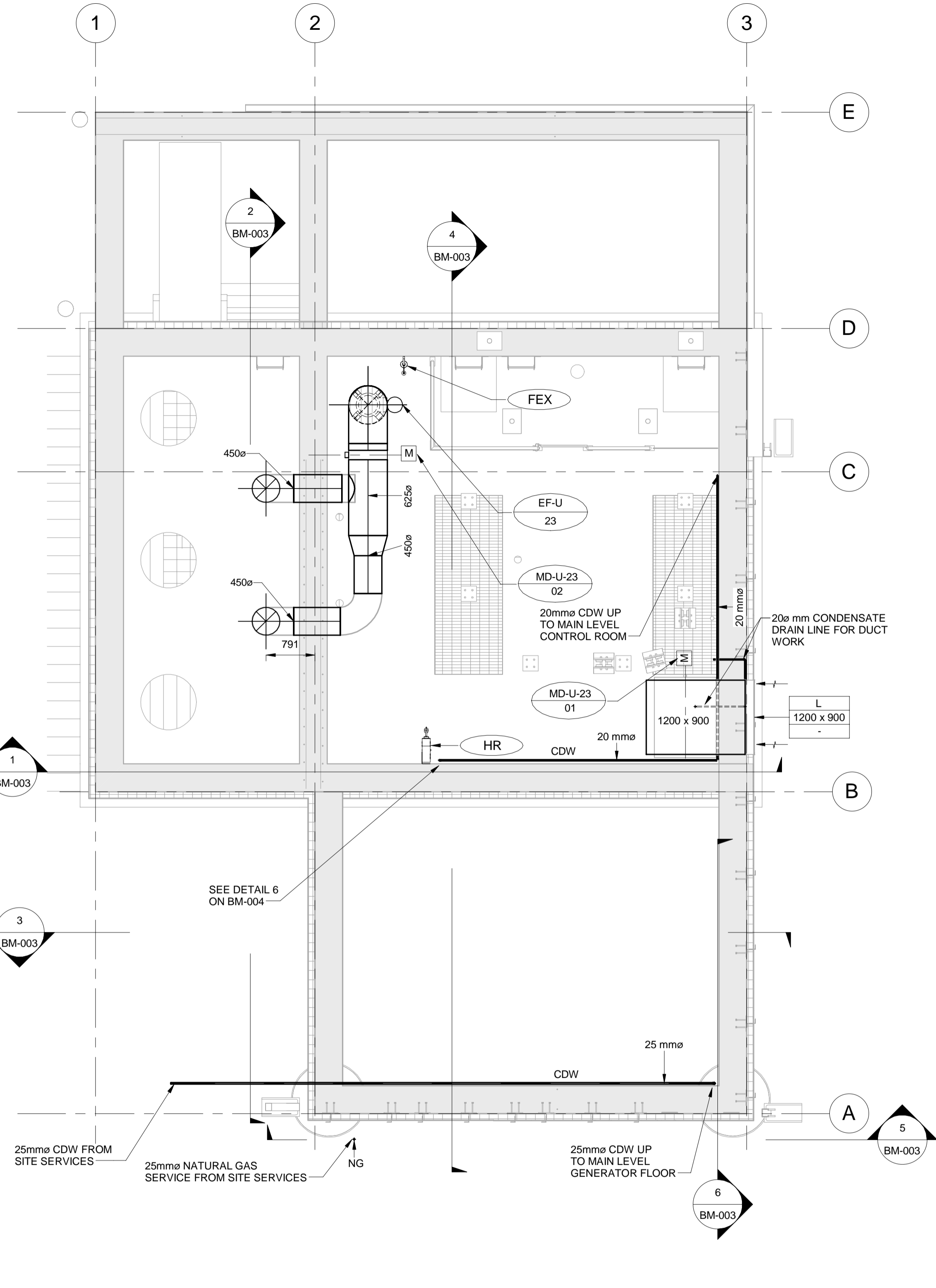


**1 MAIN LEVEL**  
 BM-002 REF: BM-003 SCALE: 1 : 50



**2 INTERMEDIATE LEVEL**  
 BM-002 REF: BM-003 SCALE: 1 : 50

P:\60321148\900-Work\910-CAD\99-SUPPORT\PROJECT\_TITLE\_BLOCKS\Title Block for Pump Station works\1633853-XTB-C1-CU.dwg

METRIC  
 WHOLE NUMBERS INDICATE MILLIMETRES  
 DECIMALIZED NUMBERS INDICATE METRES



UNDERGROUND STRUCTURES		B.M. ELEV.
SUPV. U/G STRUCTURES	DATE	
LOCATION OF UNDERGROUND STRUCTURES AS SHOWN ARE BASED ON THE BEST INFORMATION AVAILABLE BUT NO GUARANTEE IS GIVEN THAT ALL EXISTING UTILITIES ARE SHOWN OR THAT THE GIVEN LOCATIONS ARE EXACT. CONFIRMATION OF EXISTENCE AND EXACT LOCATION OF ALL SERVICES MUST BE OBTAINED FROM THE INDIVIDUAL UTILITIES BEFORE PROCEEDING WITH CONSTRUCTION.		
O	ISSUED FOR TENDER	17/01/09 DJP
NO.	REVISIONS	DATE BY DATE

<b>AECOM</b>		DESIGNED BY	GD	CHECKED BY	BP
		DRAWN BY	DJP	APPROVED BY	BP
HOR. SCALE	AS SHOWN	RELEASED FOR CONSTRUCTION			
VERTICAL		DATE	06/01/2016	DATE	

ENGINEER'S SEAL  
 PROVINCE OF MANITOBA  
**B.M. PETERSON**  
 REGISTERED PROFESSIONAL ENGINEER  
 CONSULTANT PROJECT NUMBER  
 60321148

**THE CITY OF WINNIPEG**  
 PUBLIC WORKS DEPARTMENT  
 Waverley Street Underpass at CN Mile 3.89 Rivers Sub  
 CONTRACT 2: UNDERPASS STRUCTURE, RAILWORKS,  
 ROADWORKS, LAND DRAINAGE SEWER, PUMPING STATION  
 AND LANDSCAPING WORKS  
 PUMPING STATION  
 MECHANICAL MAIN & INTERMEDIATE LEVEL  
 CITY DRAWING NUMBER  
 U-239-2016-C2-BM-002  
 SHEET 2 OF 5  
 CONSULTANT DRAWING NUMBER  
 C2-BM-002