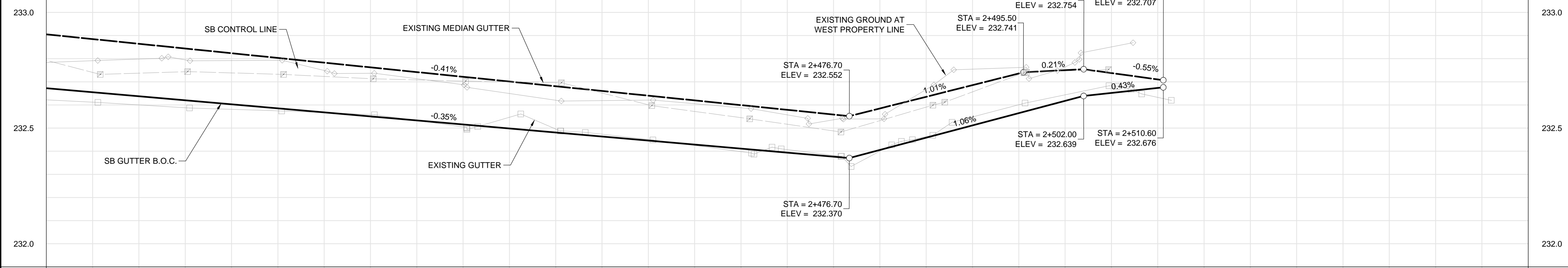
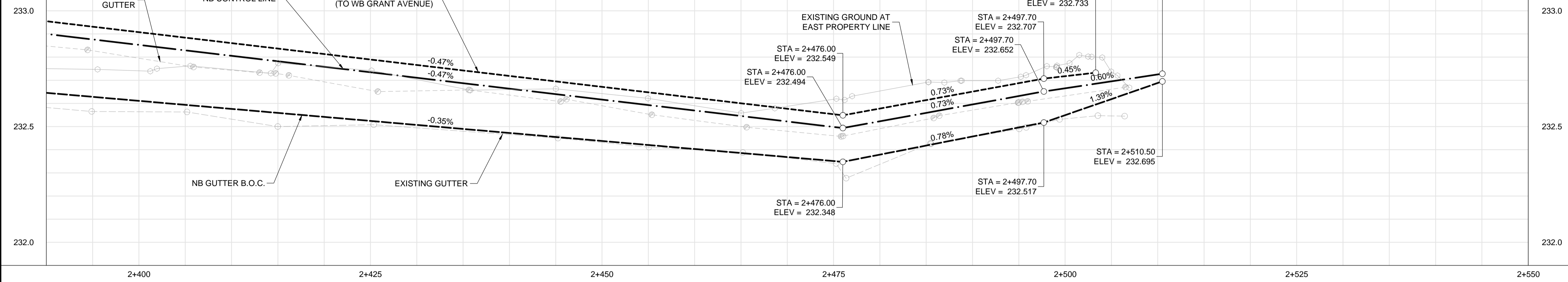


WAVERLEY STREET SOUTHBOUND

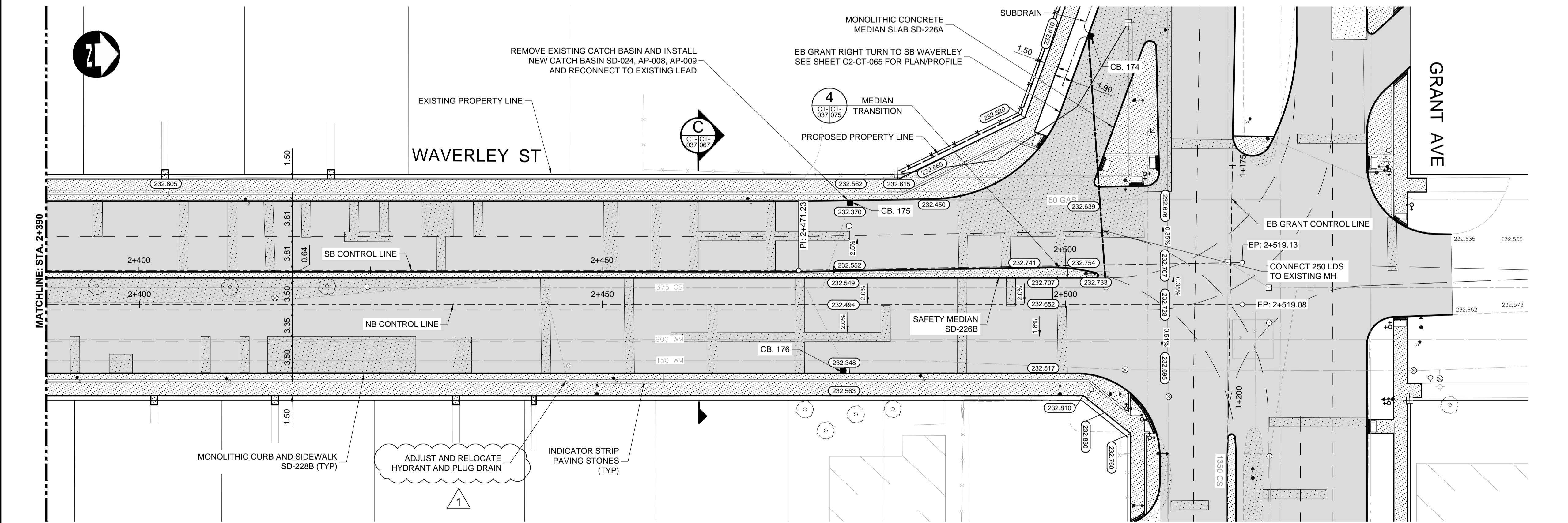


WAVERLEY STREET NORTHBOUND



- CONSTRUCTION NOTES:**
- ISOLATE MISCELLANEOUS ITEMS IN NEW CONCRETE WORKS AS PER SD-228C.
 - LEGAL PLAN AND UNDERGROUND INFORMATION FROM CITY OF WINNIPEG LBIS. CONTRACTOR VERIFY ALL UNDERGROUNDS IN THE FIELD.
 - CONTRACTOR TO TAKE PRECAUTIONARY STEPS TO AVOID DAMAGE FROM CONSTRUCTION ACTIVITIES TO TREES WITHIN THE LIMITS OF CONSTRUCTION.
 - LOCATION OF EXISTING SERVICES TO BE CONFIRMED IN THE FIELD BY THE CONTRACTOR.
 - INSTALL CB LEADS AT MIN. 1.0% SLOPE OR AS DIRECTED BY CONTRACT ADMINISTRATOR.
 - FOR CB LEADS, RIP RAP AND LDS INFORMATION SEE "CU" DRAWINGS.
 - CONTRACTOR SHALL CONFIRM EXISTING LEAD INVERT ELEVATIONS PRIOR TO INSTALLATION.

CATCH BASINS					
CB	STA	AP	RIM	BTM	INV
CB. 175	2+2476	AP-008 AP-009	232.370	230.130	230.730
CB. 176	2+475	AP-008 AP-009	232.348	230.108	230.708



APEGM
Certificate of Authorization
Dillon Consulting Limited (MB)
No. 1789 Date: 17/01/09

EXISTING	LEGEND-PLAN	PROPOSED	EXISTING	LEGEND-PLAN	PROPOSED	EXISTING	LEGEND-PROFILE	PROPOSED
150 WM	WATERMAIN	150 WM	CONCRETE	ASPHALT	150 WM	WATERMAIN	150 WM	WATERMAIN
300 LDS	HYDRANT	300 LDS	CONCRETE	PAVING STONES	300 LDS	LAND DRAINAGE SEWER	300 LDS	LAND DRAINAGE SEWER
250 WWS	VALVE	250 WWS	CONCRETE	PARTIAL DEPTH REPAIR	250 WWS	WASTE WATER SEWER	250 WWS	WASTE WATER SEWER
300 LDS	MANHOLE	300 LDS	CONCRETE	PROPERTY LINE	300 LDS	HYDRANT	300 LDS	HYDRANT
250 WWS	CATCH BASIN	250 WWS	CONCRETE	DRAINAGE ARROW	250 WWS	VALVE	250 WWS	VALVE
150 WM	CURB INLET	150 WM	CONCRETE	CURB RAMP (SD-229C)	150 WM	Q PROFILE	150 WM	Q PROFILE
300 LDS	LAND DRAINAGE SEWER	300 LDS	CONCRETE	DETECTABLE WARNING SURFACE TILE (SD-229AA)	300 LDS	NORTH/WEST GUTTER	300 LDS	NORTH/WEST GUTTER
250 WWS	WASTE WATER SEWER	250 WWS	CONCRETE		250 WWS	SOUTH/EAST GUTTER	250 WWS	SOUTH/EAST GUTTER
HYDRO	HYDRO	HYDRO	CONCRETE		HYDRO	NORTH/WEST DITCH	HYDRO	NORTH/WEST DITCH
M.T.S.	M.T.S.	M.T.S.	CONCRETE		M.T.S.	SOUTH/EAST DITCH	M.T.S.	SOUTH/EAST DITCH
100 GAS	GAS	100 GAS	CONCRETE		100 GAS		100 GAS	

UNDERGROUND STRUCTURES

SUPPLY: U/G STRUCTURES DATE

LOCATION OF UNDERGROUND STRUCTURES AS SHOWN ARE BASED ON THE BEST INFORMATION AVAILABLE. BUT NO GUARANTEE IS GIVEN THAT ALL EXISTING UTILITIES ARE SHOWN OR THAT THE GIVEN LOCATIONS ARE EXACT. CONFIRMATION OF EXISTENCE AND EXACT LOCATION OF ALL SERVICES MUST BE OBTAINED FROM THE INDIVIDUAL UTILITIES BEFORE PROCEEDING WITH CONSTRUCTION.

B.M. ELEV.

SEE SHEET C2-CT-007 FOR CONTROL POINT INFORMATION

1	ADDENDUM #7	17/03/20	DBW
0	ISSUED FOR TENDER	17/01/09	DBW

DESIGNED BY PMW

CHECKED BY RTP

DRAWN BY RD

APPROVED BY DBW

HOR. SCALE 1:250

VERTICAL 1:10

RELEASED FOR CONSTRUCTION

CONSULTANT PROJECT NUMBER 16-3353

THE CITY OF WINNIPEG PUBLIC WORKS DEPARTMENT

WAVERLEY STREET UNDERPASS AT CN MILE 3.89 RIVERS SUB CONTRACT 2: UNDERPASS STRUCTURES, RAILWORKS, ROADWORKS, LAND DRAINAGE SEWER, PUMPING STATION AND LANDSCAPING WORKS

WAVERLEY STREET - STA. 2+385 TO END (PLAN-PROFILE)

CITY DRAWING NUMBER U-239-2016-C2-CT-037

SHEET 037 **OF** 081

CONSULTANT DRAWING NUMBER C2-CT-037

G:\CAD\163353\Technical\Workspaces\Engineering\Drawings and Figures\Roadworks\Contract\163353-C2-CON-CT-PLAN-PROFILE-WAVERLEY-NORTH.dwg