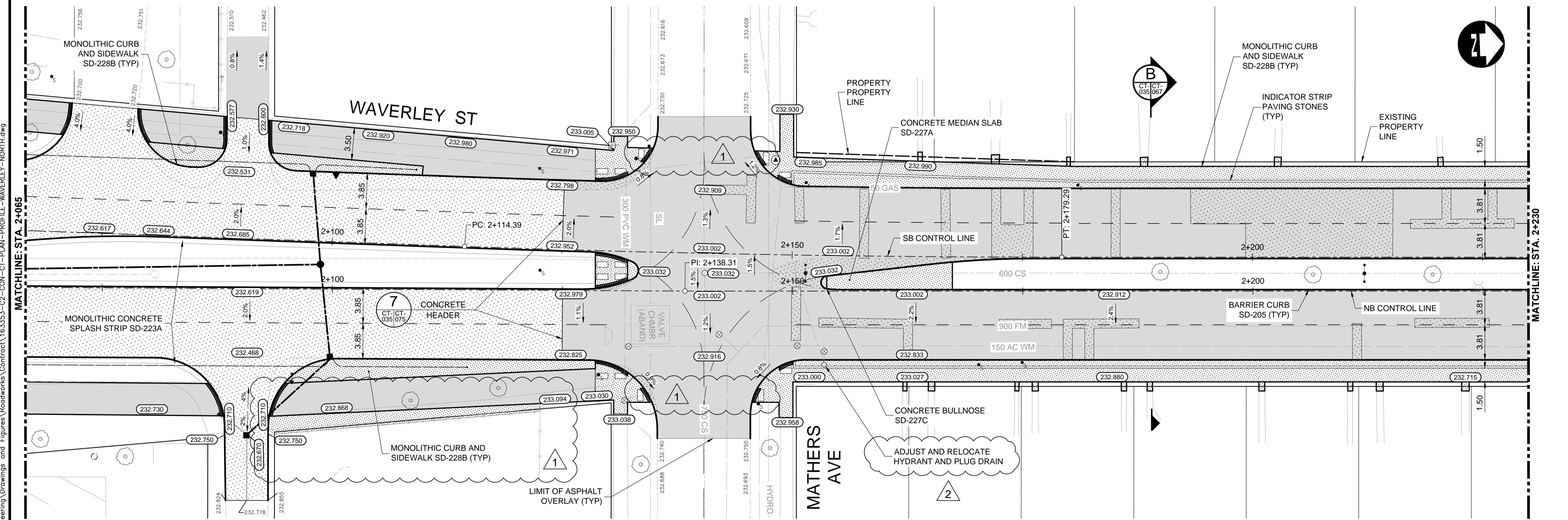


- CONSTRUCTION NOTES:**
- ISOLATE MISCELLANEOUS ITEMS IN NEW CONCRETE WORKS AS PER SD-228C.
  - LEGAL PLAN AND UNDERGROUND INFORMATION FROM CITY OF WINNIPEG LBIS. CONTRACTOR VERIFY ALL UNDERGROUNDS IN THE FIELD.
  - CONTRACTOR TO TAKE PRECAUTIONARY STEPS TO AVOID DAMAGE FROM CONSTRUCTION ACTIVITIES TO TREES WITHIN THE LIMITS OF CONSTRUCTION.
  - LOCATION OF EXISTING SERVICES TO BE CONFIRMED IN THE FIELD BY THE CONTRACTOR.
  - INSTALL CB LEADS AT MIN. 1.0% SLOPE OR AS DIRECTED BY CONTRACT ADMINISTRATOR.
  - FOR CB LEADS, RIP RAP AND LDS INFORMATION SEE "CU" DRAWINGS.
  - CONTRACTOR SHALL CONFIRM EXISTING LEAD INVERT ELEVATIONS PRIOR TO INSTALLATION.



EXISTING	LEGEND-PLAN	PROPOSED	EXISTING	LEGEND-PLAN	PROPOSED	EXISTING	LEGEND-PROFILE	PROPOSED
150 WM	WATERMAIN	150 WM	CONCRETE	ASPHALT	150 WM	WATERMAIN	150 WM	WATERMAIN
300 LDS	HYDRANT	300 LDS	ASPHALT PLANING	LAND DRAINAGE SEWER	300 LDS	LAND DRAINAGE SEWER	300 LDS	LAND DRAINAGE SEWER
250 WWS	VALVE	250 WWS	SIDEWALK	WASTE WATER SEWER	250 WWS	WASTE WATER SEWER	250 WWS	WASTE WATER SEWER
300 LDS	MANHOLE	300 LDS	PAVING STONES	HYDRANT	300 LDS	HYDRANT	300 LDS	HYDRANT
250 WWS	CATCH BASIN	250 WWS	PARTIAL DEPTH REPAIR	VALVE	250 WWS	VALVE	250 WWS	VALVE
150 WM	CURB INLET	150 WM	PROPERTY LINE	C PROFILE	150 WM	C PROFILE	150 WM	C PROFILE
300 LDS	LAND DRAINAGE SEWER	300 LDS	DRAINAGE ARROW	NORTH/WEST GUTTER	300 LDS	NORTH/WEST GUTTER	300 LDS	NORTH/WEST GUTTER
250 WWS	WASTE WATER SEWER	250 WWS	CURB RAMP (SD-229C)	SOUTH/EAST GUTTER	250 WWS	SOUTH/EAST GUTTER	250 WWS	SOUTH/EAST GUTTER
HYDRO	HYDRO	HYDRO	DETECTABLE WARNING SURFACE TILE (SD-229AA)	NORTH/WEST DITCH	HYDRO	NORTH/WEST DITCH	HYDRO	NORTH/WEST DITCH
M.T.S.	M.T.S.	M.T.S.		SOUTH/EAST DITCH	M.T.S.	SOUTH/EAST DITCH	M.T.S.	SOUTH/EAST DITCH
100 GAS	GAS	100 GAS			100 GAS		100 GAS	

**UNDERGROUND STRUCTURES**

SUPPLY: U/G STRUCTURES DATE

LOCATION OF UNDERGROUND STRUCTURES AS SHOWN ARE BASED ON THE BEST INFORMATION AVAILABLE. BUT NO GUARANTEE IS GIVEN THAT ALL EXISTING UTILITIES ARE SHOWN OR THAT THE GIVEN LOCATIONS ARE EXACT. CONFIRMATION OF EXISTENCE AND EXACT LOCATION OF ALL SERVICES MUST BE OBTAINED FROM THE INDIVIDUAL UTILITIES BEFORE PROCEEDING WITH CONSTRUCTION.

**B.M. ELEV.** SEE SHEET C2-CT-007 FOR CONTROL POINT INFORMATION

NO.	REVISIONS	DATE	BY
2	ADDENDUM #7	17/03/20	DBW
1	ADDENDUM #1	17/01/25	DBW
0	ISSUED FOR TENDER	17/01/09	DBW

**DESIGNED BY** PMW  
**CHECKED BY** RTP

**DRAWN BY** RD  
**APPROVED BY** DBW

**HOR. SCALE** 1:250  
**VERTICAL** 1:10

**RELEASED FOR CONSTRUCTION**

**CONSULTANT PROJECT NUMBER** 16-3353

**THE CITY OF WINNIPEG PUBLIC WORKS DEPARTMENT**

**WAVERLEY STREET UNDERPASS AT CN MILE 3.89 RIVERS SUB CONTRACT 2: UNDERPASS STRUCTURES, RAILWORKS, ROADWORKS, LAND DRAINAGE SEWER, PUMPING STATION AND LANDSCAPING WORKS**

**CITY DRAWING NUMBER** U-239-2016-C2-CT-035  
**SHEET** 035 **OF** 081

**CONSULTANT DRAWING NUMBER** C2-CT-035

G:\CAD\163353\Technical\Workspc\Engineering\Drawings and Figures\Roadworks\Contract\163353-C2-CON-C1-PLAN-PROFILE-WAVERLEY-NORTH.dwg