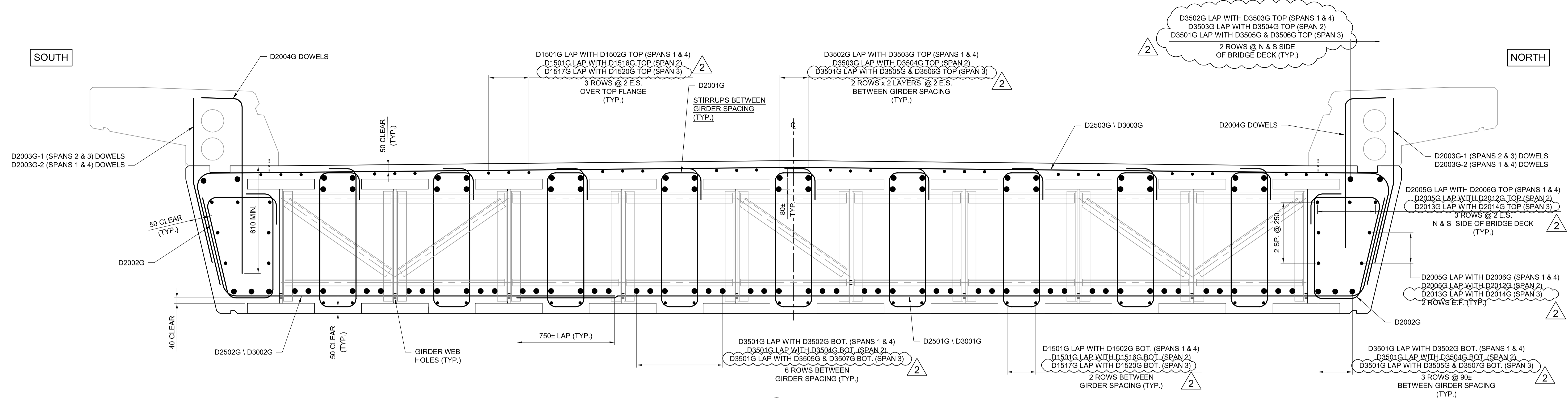
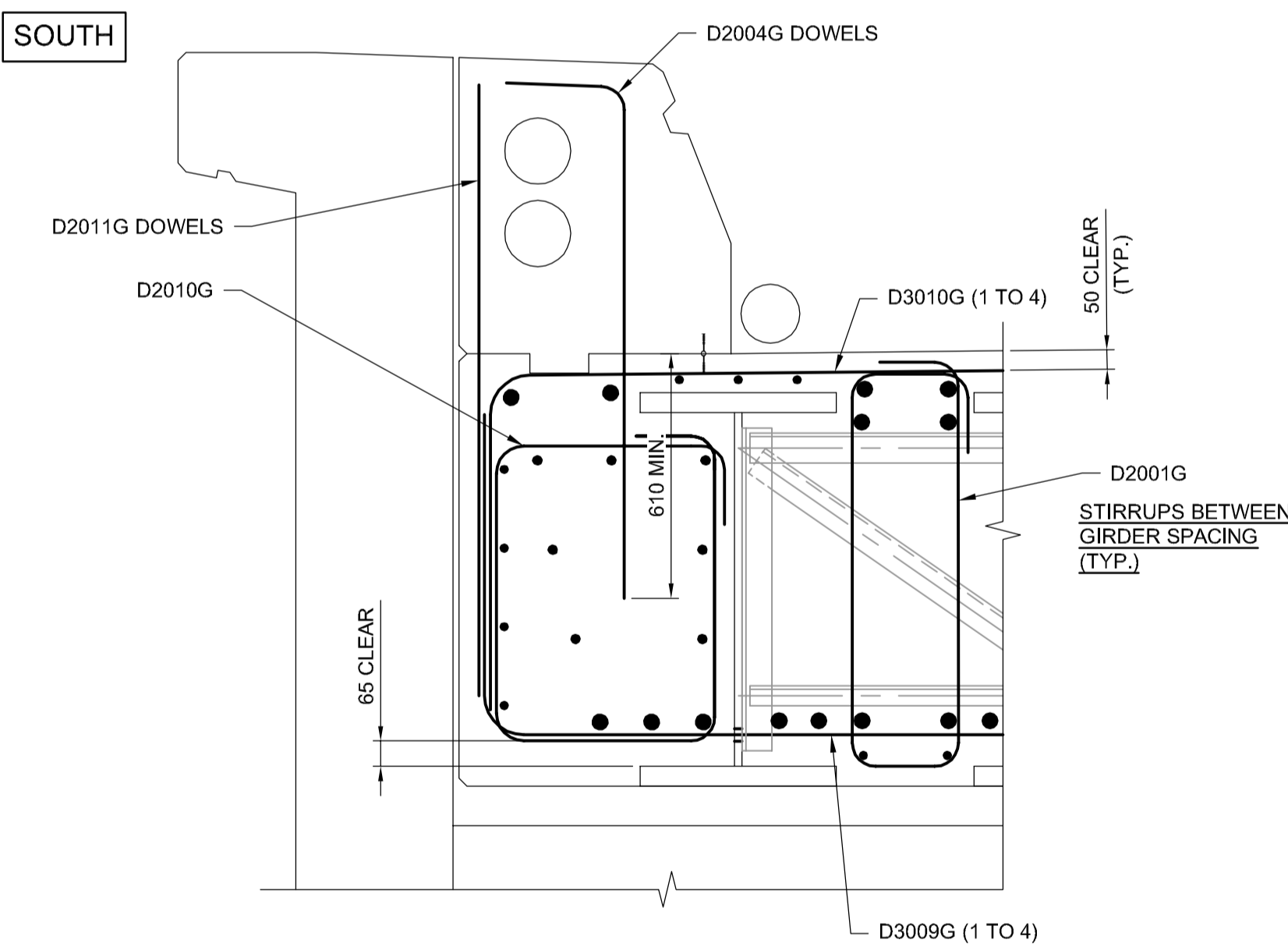


G:\CAD\163353\Technical\Workspaces\Engineering\Drawings and Figures\Structures\Contract\163353-C2-CON-CS-DECK SLAB REINFORCING 4.dwg

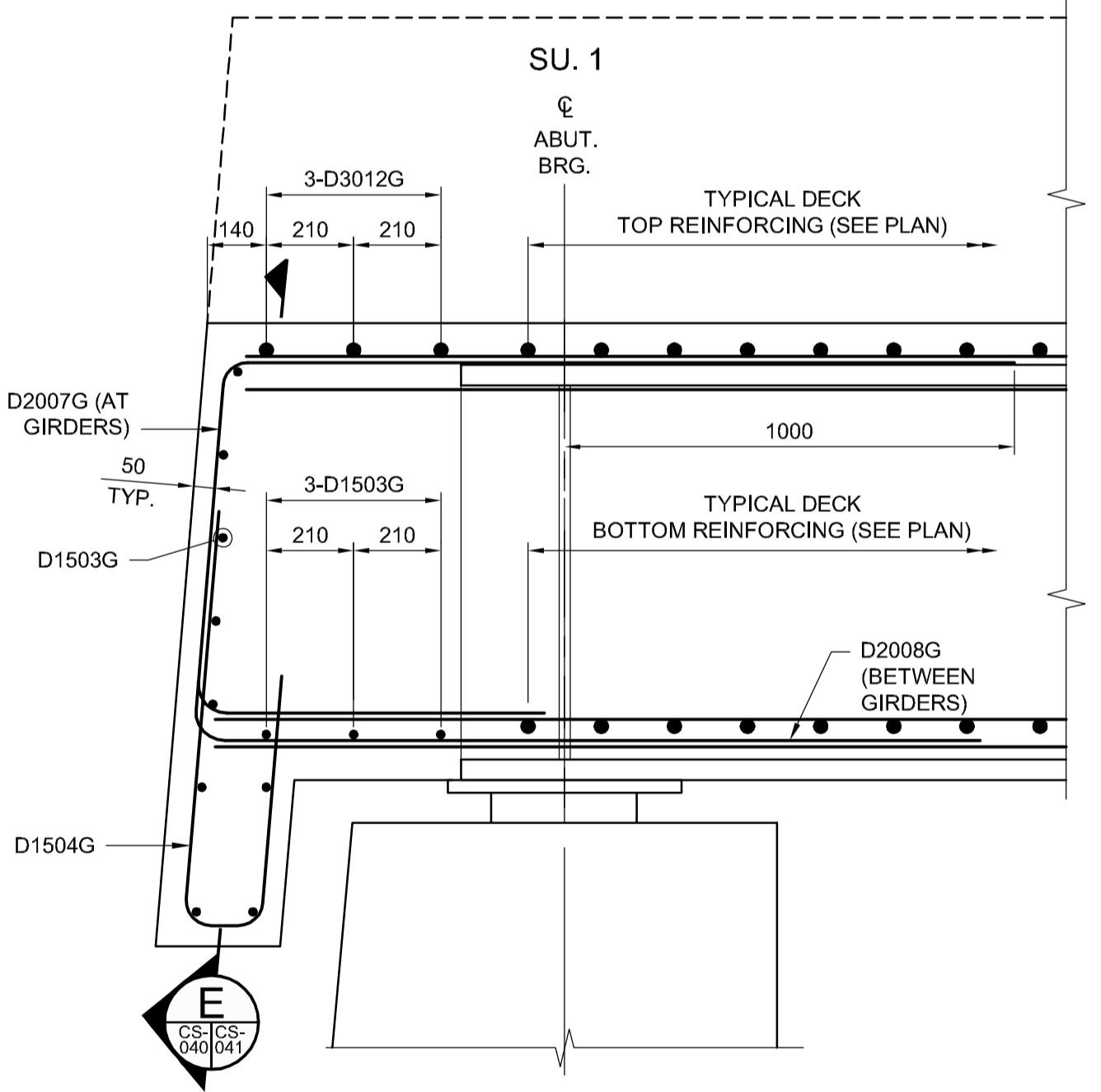


A SECTION
SCALE: 1:15

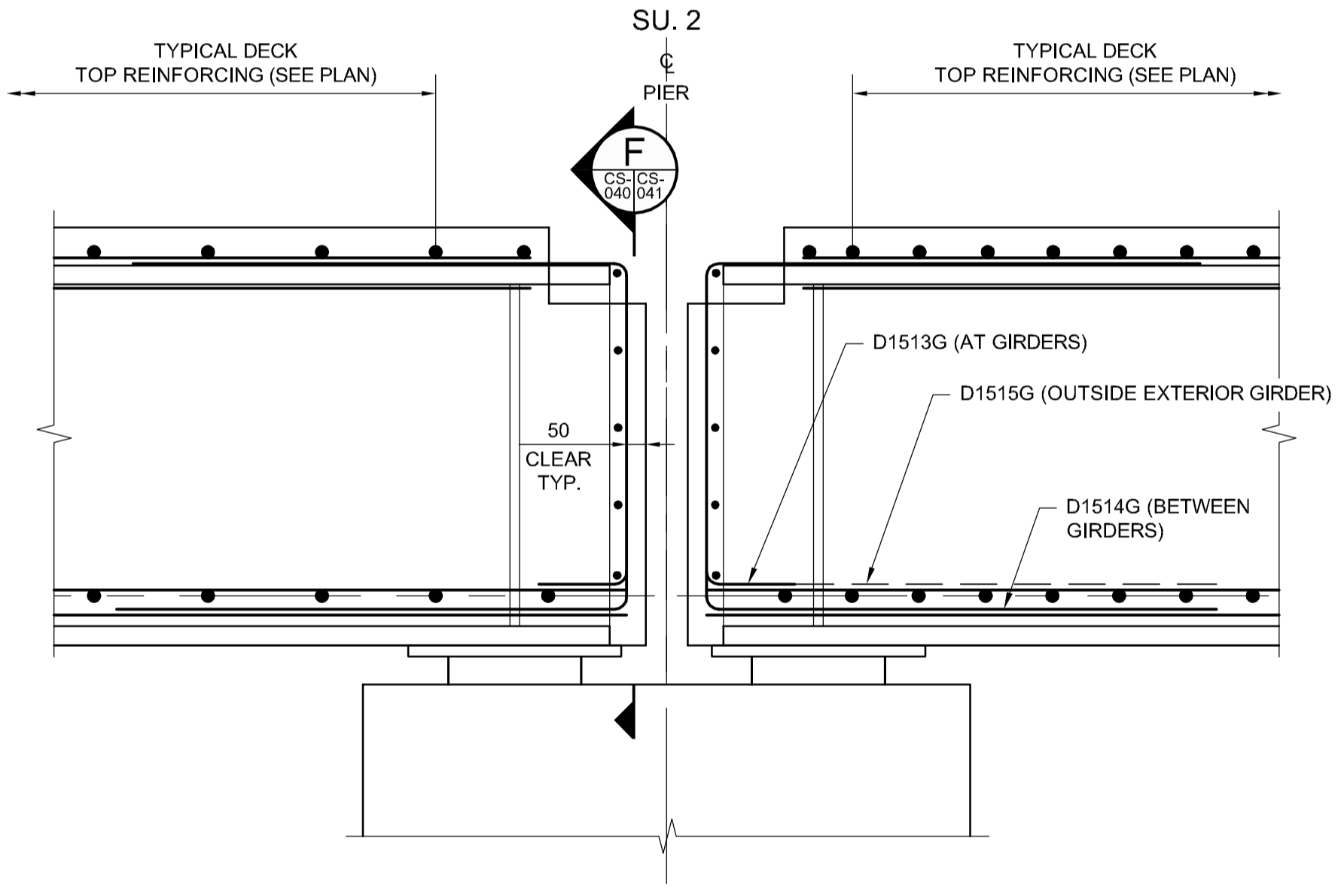
NOTE: MAINTAIN STAGGERED SPLICING TOP AND BOTTOM THROUGH OUT REBAR INSTALLATION



B SECTION
SCALE: 1:15



C SECTION
SCALE: 1:15
AT GIRDER



D SECTION
SCALE: 1:15

ALL REINFORCING CHANGED TO GALVANIZED REINFORCING STEEL

- NOTES:**
- FOR REINFORCING STEEL NOTES REFER TO SHEET C2-CS-001.
 - REINFORCING STEEL WITH MARKS ENDING WITH "G" SHALL BE GALVANIZED REINFORCING.
 - FOR CONCRETE CLEAR COVER TO REINFORCEMENT REFER TO SHEET C2-CS-001.



| NO. | REVISIONS | DATE | BY | DATE |
|-----|-------------------|----------|----|------|
| 2 | ADDENDUM #4 | 17/02/24 | RE | |
| 1 | ADDENDUM #1 | 17/01/25 | RE | |
| 0 | ISSUED FOR TENDER | 17/01/09 | RE | |

| | | | |
|-------------|----------|---------------------------|-----|
| DESIGNED BY | RE | CHECKED BY | SSR |
| DRAWN BY | NBG/CCG | APPROVED BY | DBW |
| HOR. SCALE | AS SHOWN | RELEASED FOR CONSTRUCTION | |
| VERTICAL | AS SHOWN | | |

ENGINEER'S SEAL
PROVINCE OF MANITOBA
R.B. ERIC
Member 22665
REGISTERED PROFESSIONAL ENGINEER
CONSULTANT PROJECT NUMBER
16-3353

THE CITY OF WINNIPEG
PUBLIC WORKS DEPARTMENT
Waverley Street Underpass at CN Mile 3.89 Rivers Sub
CONTRACT 2: UNDERPASS STRUCTURE, RAILWORKS,
ROADWORKS, LAND DRAINAGE SEWER, PUMPING STATION
AND LANDSCAPING WORKS
CITY DRAWING NUMBER
U-239-2016-C2-CS-040
SHEET **040** OF **085**
CONSULTANT DRAWING NUMBER
C2-CS-040