

KEYPLAN: N.T.S.

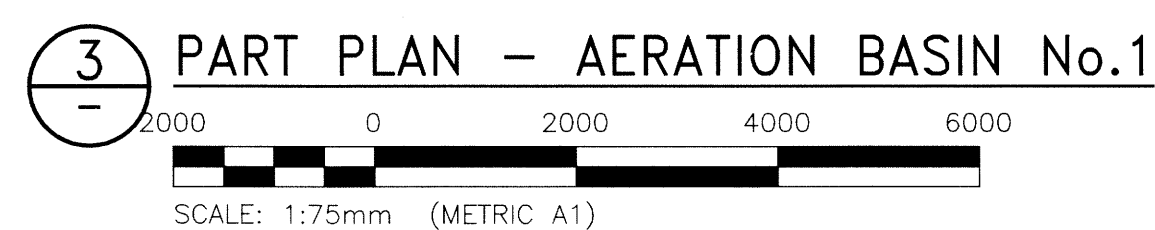
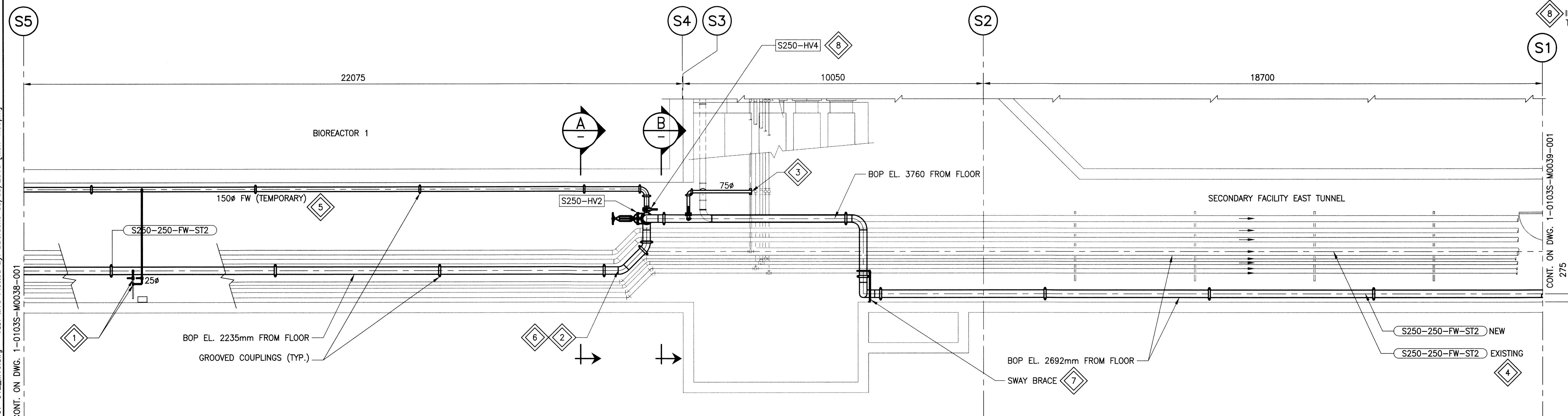
GENERAL NOTES:

1. REFER TO DRAWING M14 FOR GENERAL NOTES.

CONSTRUCTION PHASE 1

KEYNOTES:


1. CONNECT TO EXISTING 250 ϕ LINE TO FW HOSE STATION.
2. NEW 250 ϕ FW HEADER TO BE INSTALLED IN SAME LOCATION AS EXISTING HEADER AND EXISTING PIPE SUPPORTS TO BE REUSED FROM THIS POINT WESTWARD.
3. CONNECT TO EXISTING 650 ϕ FW LINE.
4. REMOVE EXISTING 250 ϕ FW HEADER.
5. FIELD ROUTE 150 ϕ TEMPORARY FW HEADER. SUPPORT HEADER ON NEW HANGERS EVERY 5m, AT CONCENTRATED LOADS AND AT CHANGES IN DIRECTION. SUPPORT PIPING ALONG BIOREACTOR 1 ON WELDED STEEL BRACKETS (ANVIL FIG. 195) FASTENED TO WALL. REMOVE PIPE SUPPORTS FOLLOWING PIPE REMOVAL.
6. NEW 250 ϕ FW HEADER TO BE INSTALLED IN NEW LOCATION c/w NEW HANGER SUPPORTS FROM THIS POINT EASTWARD. SUPPORT PIPE EVERY 6m AT CONCENTRATED LOADS AND CHANGES IN DIRECTION.
7. PROVIDE SWAY BRACE ON NEW 250 ϕ FW HEADER. REFER TO DWG. M15 FOR DETAILS.
8. INSTALL BLIND FLANGE ON VALVE FOLLOWING REMOVAL OF TEMPORARY LINE.



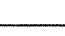


METRIC


WHOLE NUMBERS INDICATE MILLIMETRES
DECIMALIZED NUMBERS INDICATE METRES

APEGM
Certificate of Authorization
KGS Group
No. 245


		FIELD BOOK #:	
POSTED TO L.B.I.S.			
0	ISSUED FOR CONSTRUCTION	16/05/09	
NO.	REVISIONS	DATE	BY

		<div> <div> <div>DESIGNED BY</div> <div>JS</div> </div> <div>CHECKED BY</div> <div>  </div> </div>	
		<div> <div> <div>DRAWN BY</div> <div>JFS</div> </div> <div>APPROVED BY</div> <div>  </div> </div>	
<div> <div> <div>HOR. SCALE</div> <div>AS NOTED</div> </div> <div>VERTICAL</div> <div>AS NOTED</div> </div>		<div> <div>RELEASED FOR CONSTRUCTION</div> </div>	
<div> <div>DATE</div> <div>2016 02 22</div> </div>		<div> <div>DATE</div> <div>2016-05-09</div> </div>	

ENGINEER'S SEAL



M16

	THE CITY OF WINNIPEG WATER AND WASTE DEPARTMENT	
	WEWPCC FW PIPE REPLACEMENT	SHEET 2 OF 2
MECHANICAL AERATION BASIN No.1 - FW PIPING - PLAN		CITY DRAWING NUMBER 1-0103S-M0038-002