

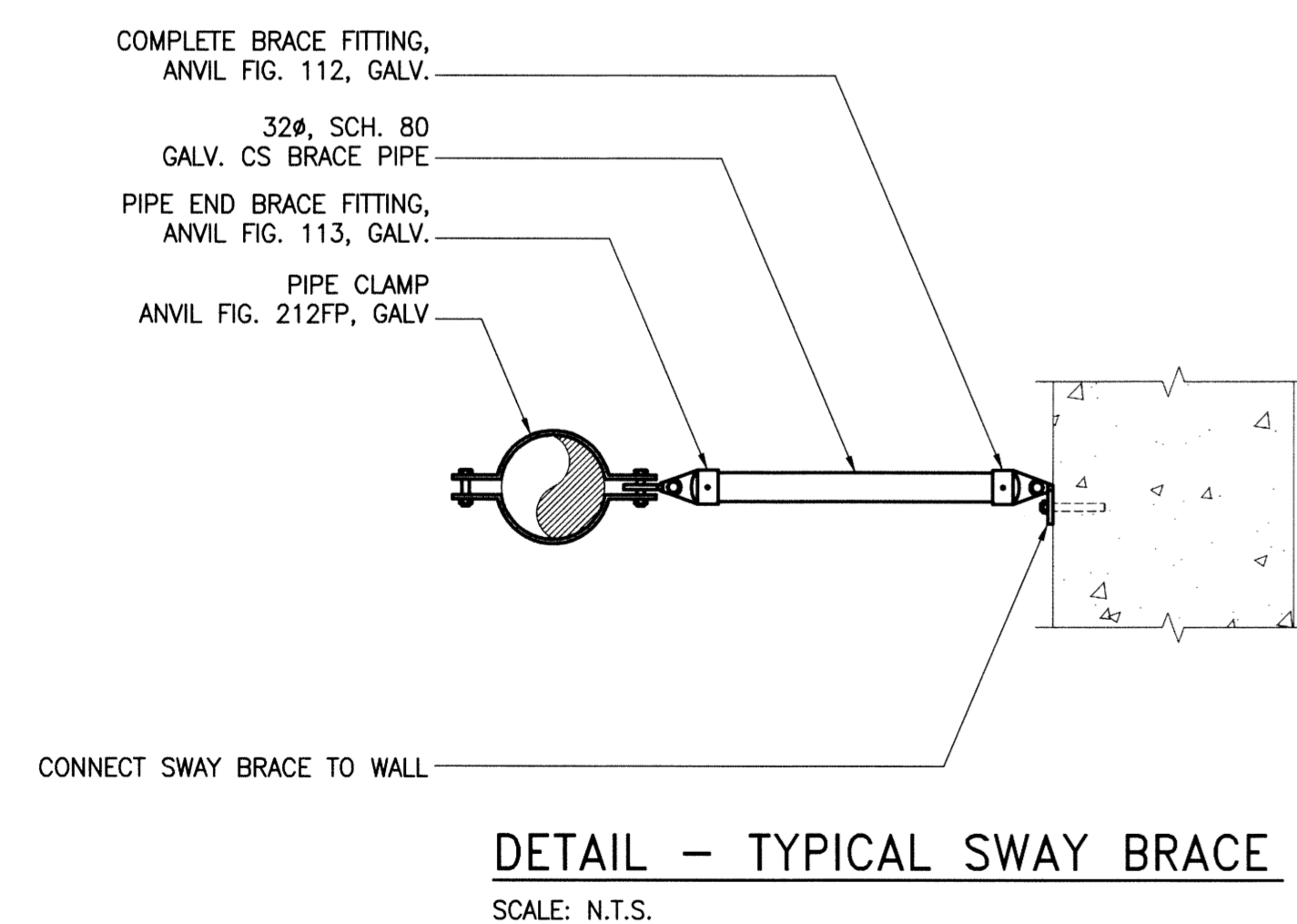
GENERAL NOTES:

1. REFER TO DRAWING M14 FOR GENERAL NOTES.

CONSTRUCTION PHASE 1

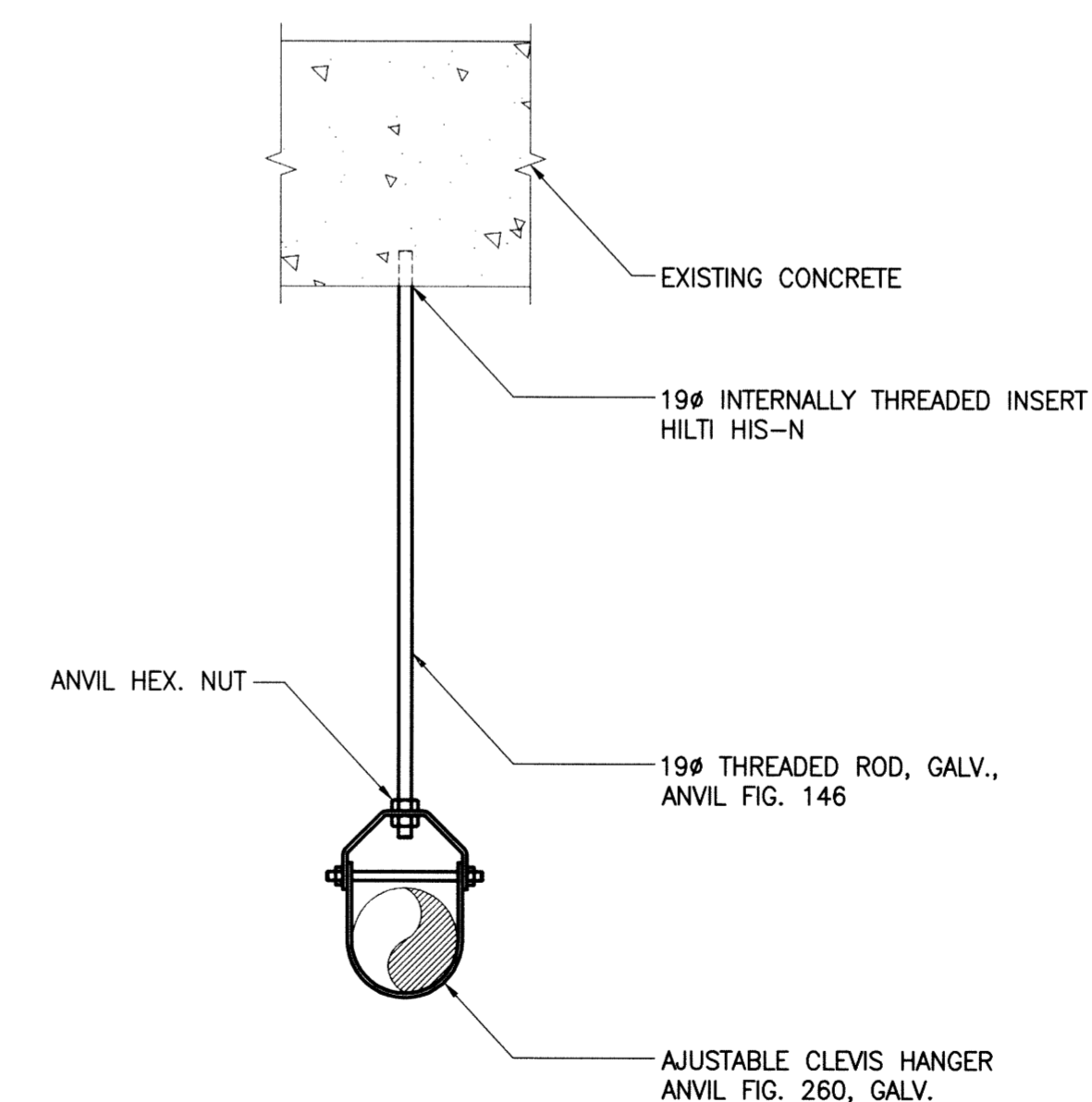
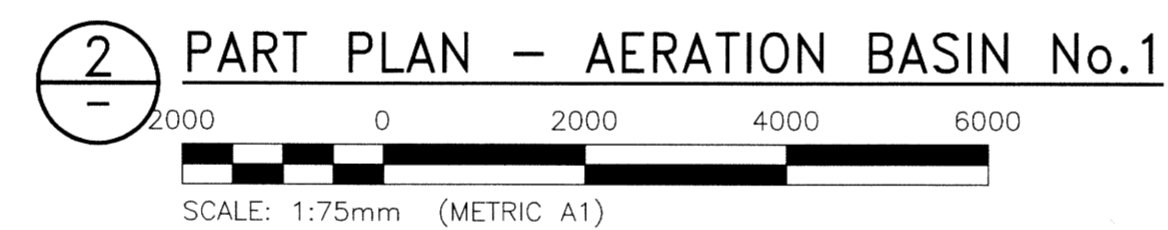
KEYNOTES:

1. CONNECT TO EXISTING 500 FW LINE.
2. CONNECT TO EXISTING 500 FW LINE UPSTREAM OF PRESSURE REGULATING VALVE.
3. INSTALL NEW 2500 FW HEADER IN SAME LOCATION AS EXISTING HEADER. REMOVE PICKUP SUPPORTS ON THE EXISTING 2500 FW HEADER BETWEEN GRID LINES S6 AND S11 AND PROVIDE TEMPORARY SUPPORT OF EXISTING PIPING. REINSTALL PICKUP SUPPORTS FOLLOWING INSTALLATION OF NEW 2500 FW HEADER.
4. FIELD ROUTE 1500 TEMPORARY FW HEADER. SUPPORT HEADER ON NEW HANGERS EVERY 5m. AT CONCENTRATED LOADS AND AT CHANGES IN DIRECTION. SUPPORT PIPING ALONG BIOREACTOR 1 ON WELDED STEEL BRACKETS (ANVIL FIG. 195) FASTENED TO WALL. REMOVE PIPE SUPPORTS FOLLOWING PIPE REMOVAL.



DETAIL - TYPICAL SWAY BRACE

SCALE: N.T.S.






DETAIL - TYPICAL PIPE HANGER

SCALE: N.T.S.

METRIC

WHOLE NUMBERS INDICATE MILLIMETRES
DECIMALIZED NUMBERS INDICATE METRES

<div></div> <div>Certificate of Authorization</div> <div>KGS Group</div> <div>No. 245</div>	FIELD BOOK #:		<div></div> <div>DESIGNED BY JS</div> <div>CHECKED BY <i>MJK</i></div> <div>DRAWN BY JFS</div> <div>APPROVED BY <i>[Signature]</i></div> <div>HOR. SCALE AS NOTED</div> <div>RELEASED FOR CONSTRUCTION</div> <div>VERTICAL AS NOTED</div> <div>DATE 2016 02 22</div> <div>DATE 2016-05-09</div>		ENGINEER'S SEAL		<div></div> <div>THE CITY OF WINNIPEG</div> <div>WATER AND WASTE DEPARTMENT</div>	
	POSTED TO LBIS				WEWPC FW PIPE REPLACEMENT			
							MECHANICAL	
							AERATION BASIN No.1 - FW PIPING - PLAN	
	0	ISSUED FOR CONSTRUCTION			16/05/09	<i>[Signature]</i>	M15	SHEET 1 OF 2
	NO.	REVISIONS			DATE	BY		CITY DRAWING NUMBER
								1-0103S-M0038-001