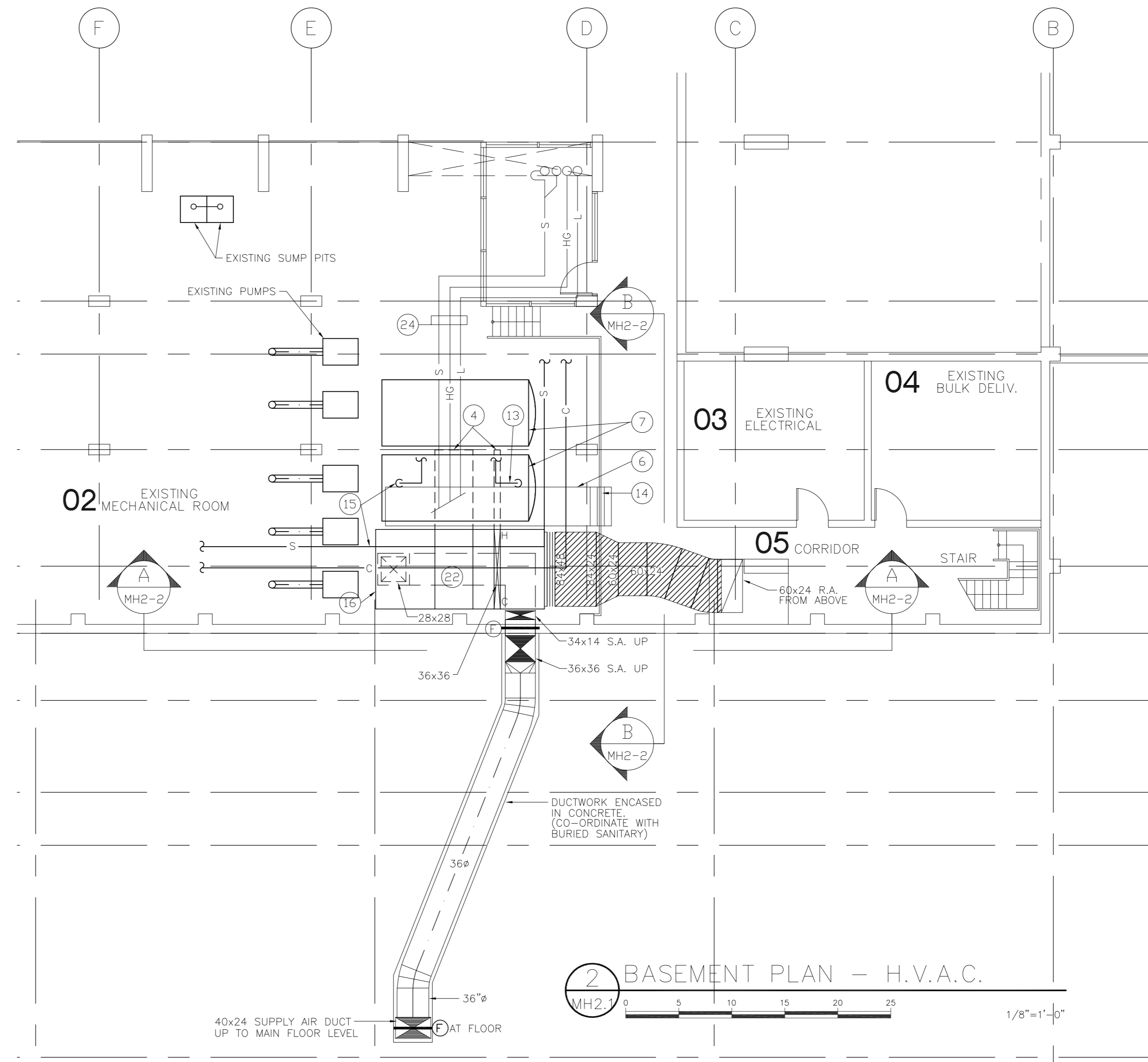


1 SECTION AT AIR INTAKE

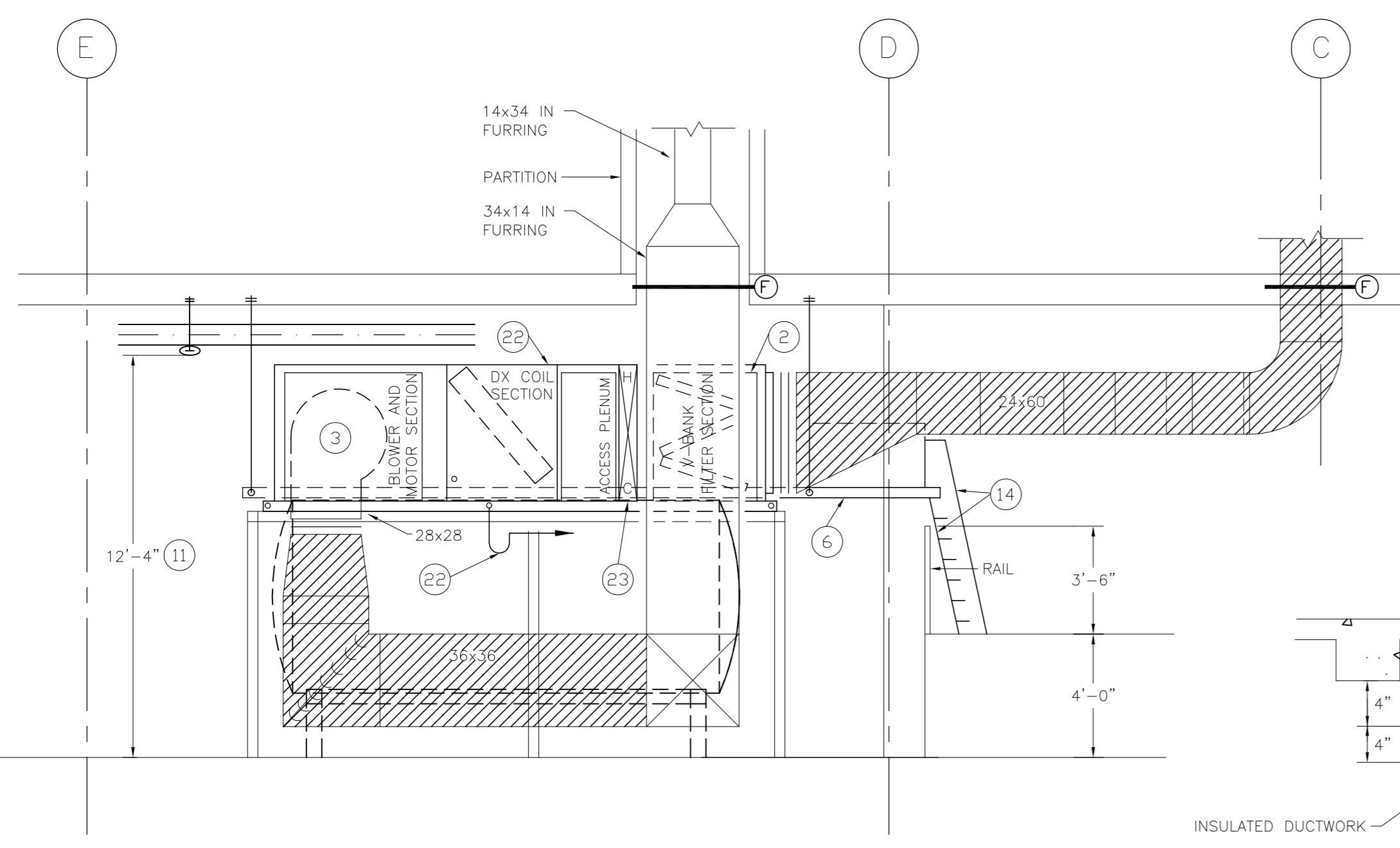
MH2.1 0 5 10 15 20 25 1/8"=1'-0"

- 1 24" LONG ACCESS SECTION
- 2 ANGLE FILTER SECTION
- 3 AHU-1 FAN SECTION
- 4 COIL REMOVAL CLEARANCE MUST CLEAR EXISTING H.W. TANK
- 5 EXISTING 8" PIPING TO REMAIN
- 6 NEW 36" WIDE SERVICE CAT WALK
- 7 EXISTING H.W. TANKS TO REMAIN
- 8 STRUCTURAL STEEL SUPPORT
- 9 PIPE RAKING 42" HIGH
- 10 HANGER FOR CAT WALK
- 11 DIMENSION TO U/S OF PIPE ROLLER
- 12 14 x 34 IN FURRING
- 13 EXISTING 8" PIPING
- 14 36" WIDE SHIPS LADDER AND RAILING
- 15 EXISTING 6" PIPING
- 16 AIR HANDLING UNIT
- 17 DUCT BURIED IN CONCRETE
- 18 FIRE DAMPER
- 19 ACCESS DOOR
- 20 54" WIDE x 96" HIGH LOUVER, AIRLOTE K664
- 21 TYPE RA-A RETURN AIR GRILLE, 48" WIDE x 84" HIGH
- 22 COOLING COIL SECTION WITH 1" CONDENSATE DRAIN, PIPE TO FLOOR DRAIN WITH DEEP SEAL TRAP
- 23 HEATING COIL SECTION
- 24 REFRIGERANT PIPING SUSPENDED AT HIGH LEVEL 2 5/8" SECTION, 1 5/8" HOT GAS LINE, 1 3/8" LIQUID LINE.
- 25 REFRIGERANT PIPE RISERS UP TO ROOF INSIDE EXISTING SHAFT C/W DOUBLE SUCTION RISER AND OIL TRAPS.
- 26 CONCRETE SLAB AND VOID FORM. SEE STRUCTURAL DRAWINGS.
- 27 SAND
- 28 LOW STRENGTH CONCRETE
- 29 36" SONOTUBE
- 30 4" SLAB WITH WIRE TIE DOWNS
- 31 PLYWOOD FORMING FOR CONCRETE DUCT TO BE REMOVED.
- 32 CONCRETE SLAB OVER PIT.



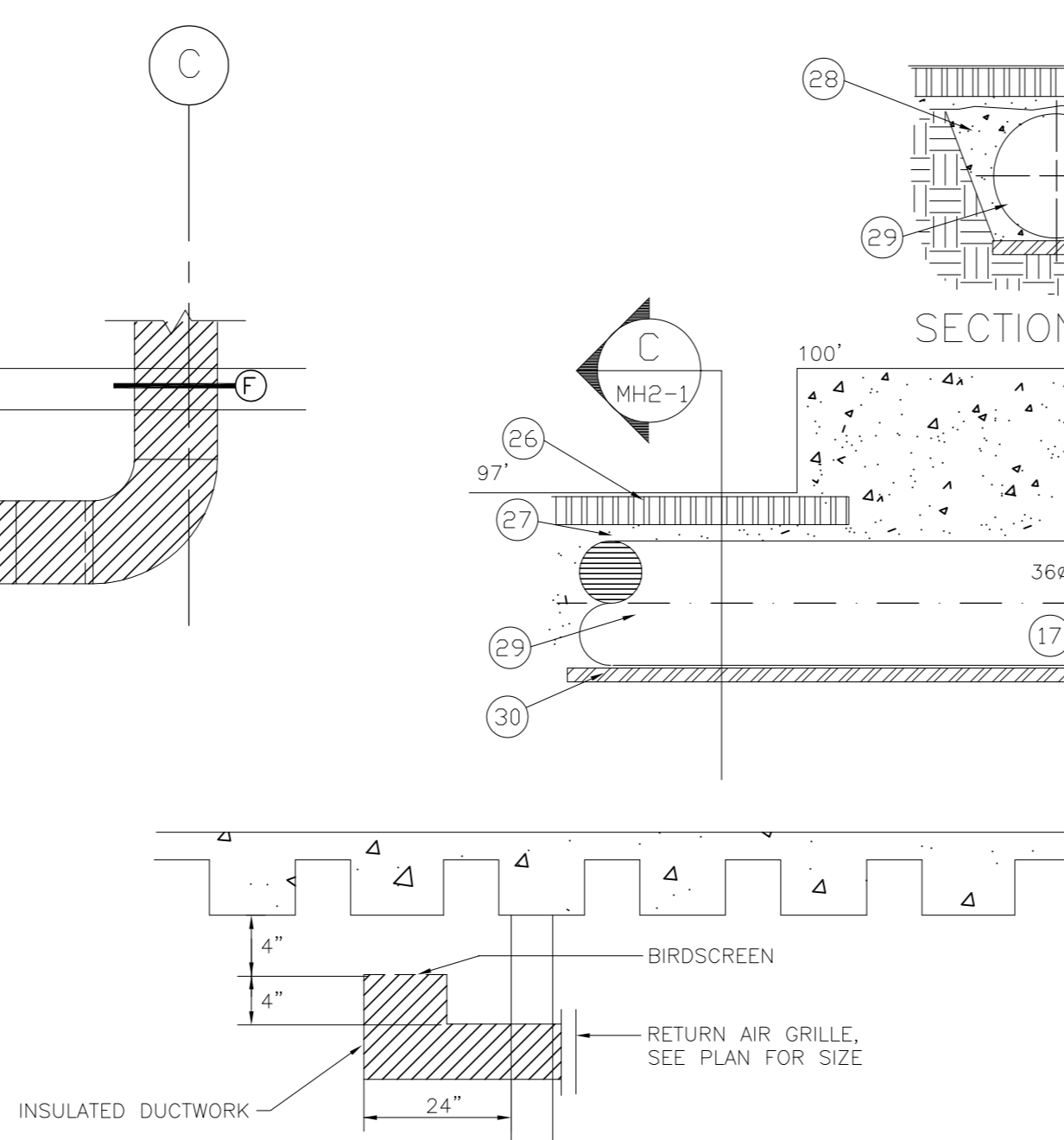
2 BASEMENT PLAN - H.V.A.C.

MH2.1 0 5 10 15 20 25 1/8"=1'-0"



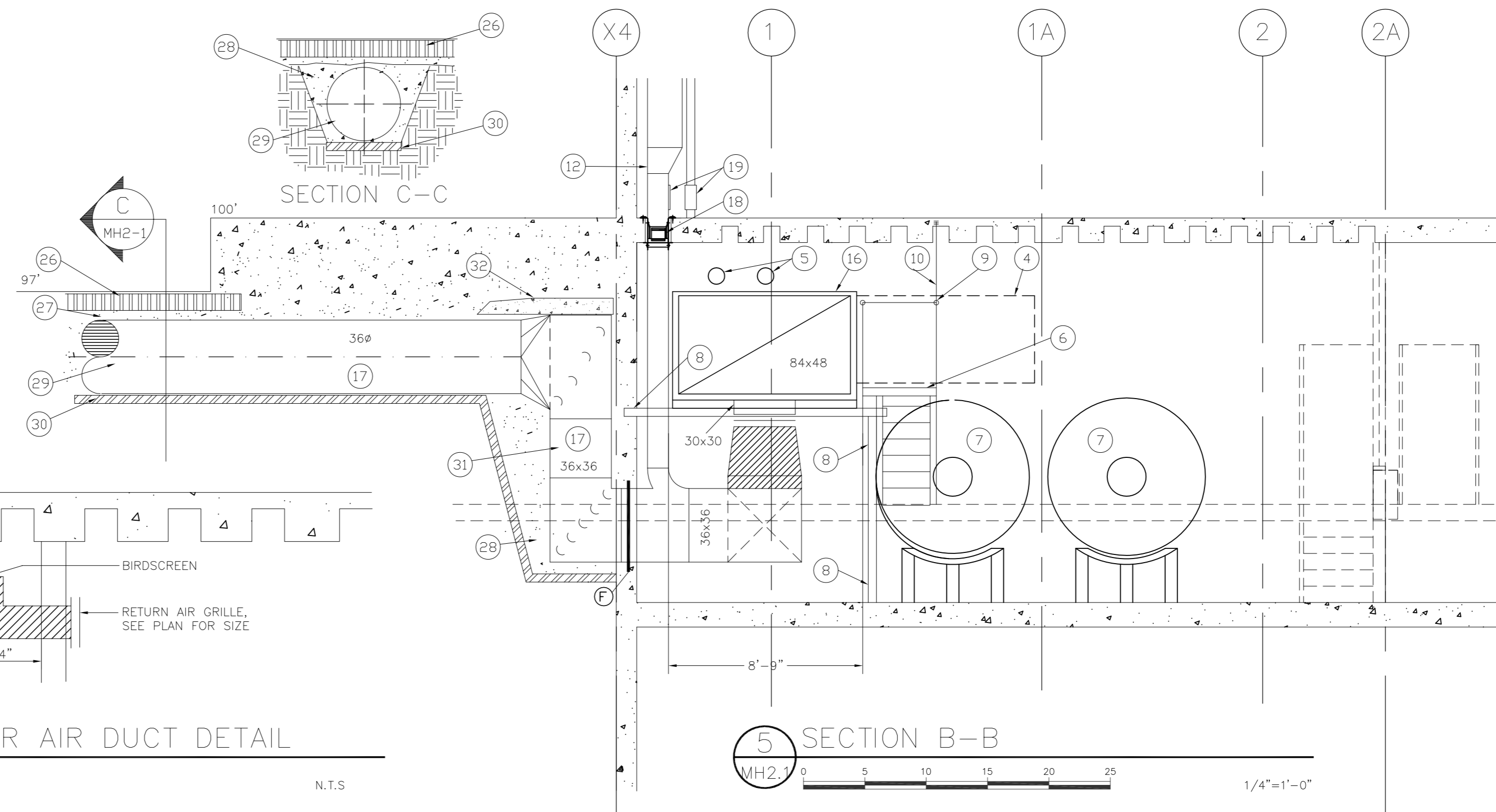
3 SECTION A-A

MH2.1 0 5 10 15 20 25 1/4"=1'-0"



3 TRANSFER AIR DUCT DETAIL

MH2.1 N.T.S.



5 SECTION B-B

MH2.1 0 5 10 15 20 25 1/4"=1'-0"

No.	Description	Date (d/m/y)	Drawn	Checked

Initiated By
JH

Designed By
RwG

Drawn By
RwG

Checked By
RwG, JH

Approved By
GC



Man-Shield
CONSTRUCTION INC.
205-698 CORYDON AVE
WINNIPEG, MANITOBA
R3M 0V7
(204) 475-4394

Smith Carter
Architects
Engineers
Planners
Interior Designers

ADDITIONS AND RENOVATIONS
TO THE PAN-AM POOL
WINNIPEG
MANITOBA

Sheet Title
MECHANICAL ROOM, SECTIONS AND AIR CONDITIONING

Scales	Date
1/8"=1'-0"	DEC. 4, 1997

File Number	Sheet Number
97126	MH2.1