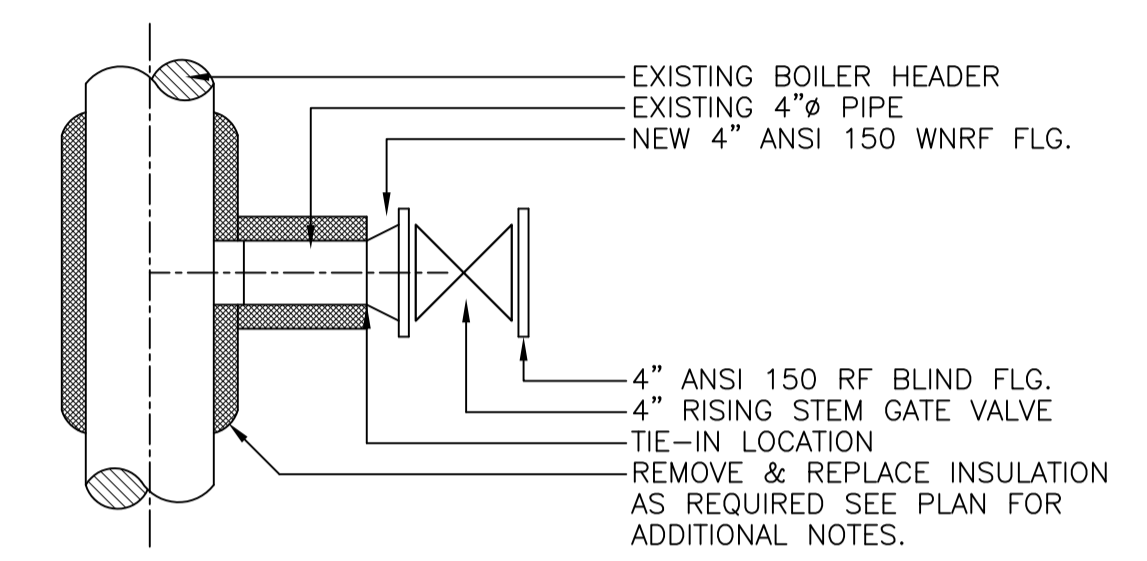
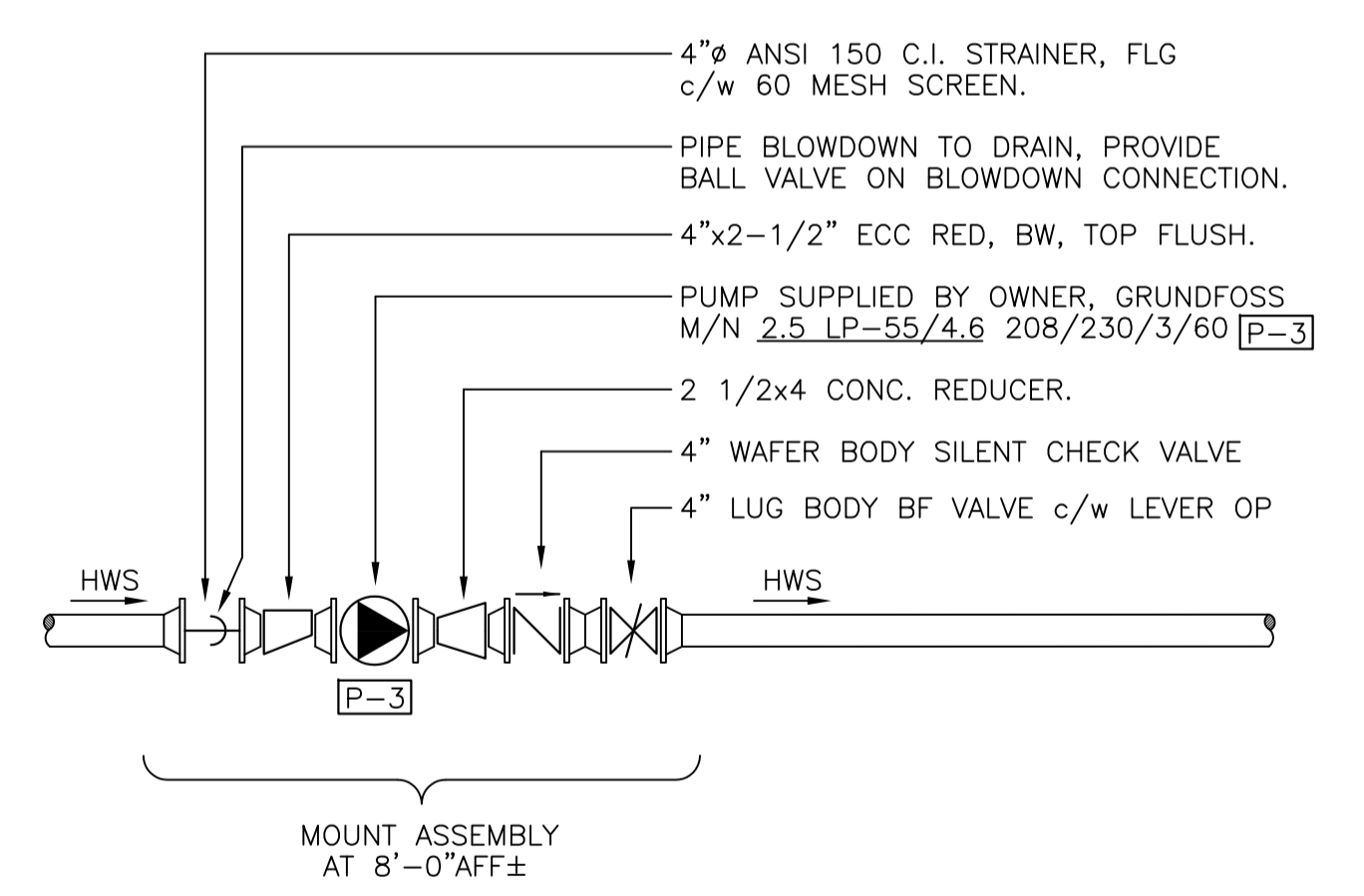


B PIPING DETAIL AT NEW TIE-INS.
N.T.S.
* TYPICAL AT 2 LOCATIONS.



1 SECTION AT EXISTING ELECTRIC BOILER.
N.T.S.
* TYPICAL AT 2 LOCATIONS.



2 SECTION AT CIRCULATOR P-3 PIPING.
N.T.S.

A PARTIAL PLAN WEST BOILER ROOM
1/4"=1'-0"

Record Drawings
These Record Drawings have been prepared utilizing the mark-up documents provided by the contractor. Accutech Engineering Inc has undertaken no independent verification of the information. The responsibility for the accuracy of the Record information rests with the contractor supplying the information.

REV.	DESCRIPTION	DWN.	APP.	DATE
3	AS BUILT DRAWING	FT	BKW	05/31/02
2	ISSUED FOR CONSTRUCTION	FT	BKW	02/01/02
1	ISSUED FOR TENDER	FT	BKW	01/25/02
0	ISSUED FOR CLIENT REVIEW	FT	BKW	01/24/02

ACCUTECH Engineering
605-287 Broadway, Winnipeg, Manitoba, Canada R3C 0R9
APPROVED BY: FT DATE: _____
DESIGNED BY: BKW
CHECKED BY: BKW
SCALE: AS NOTED JOB No. _____

CITY OF WINNIPEG
PAN AM POOL MECHANICAL RENOVATIONS
WEST BOILER ROOM
PIPING MODIFICATIONS
AM03 3
DWG. No. REV.