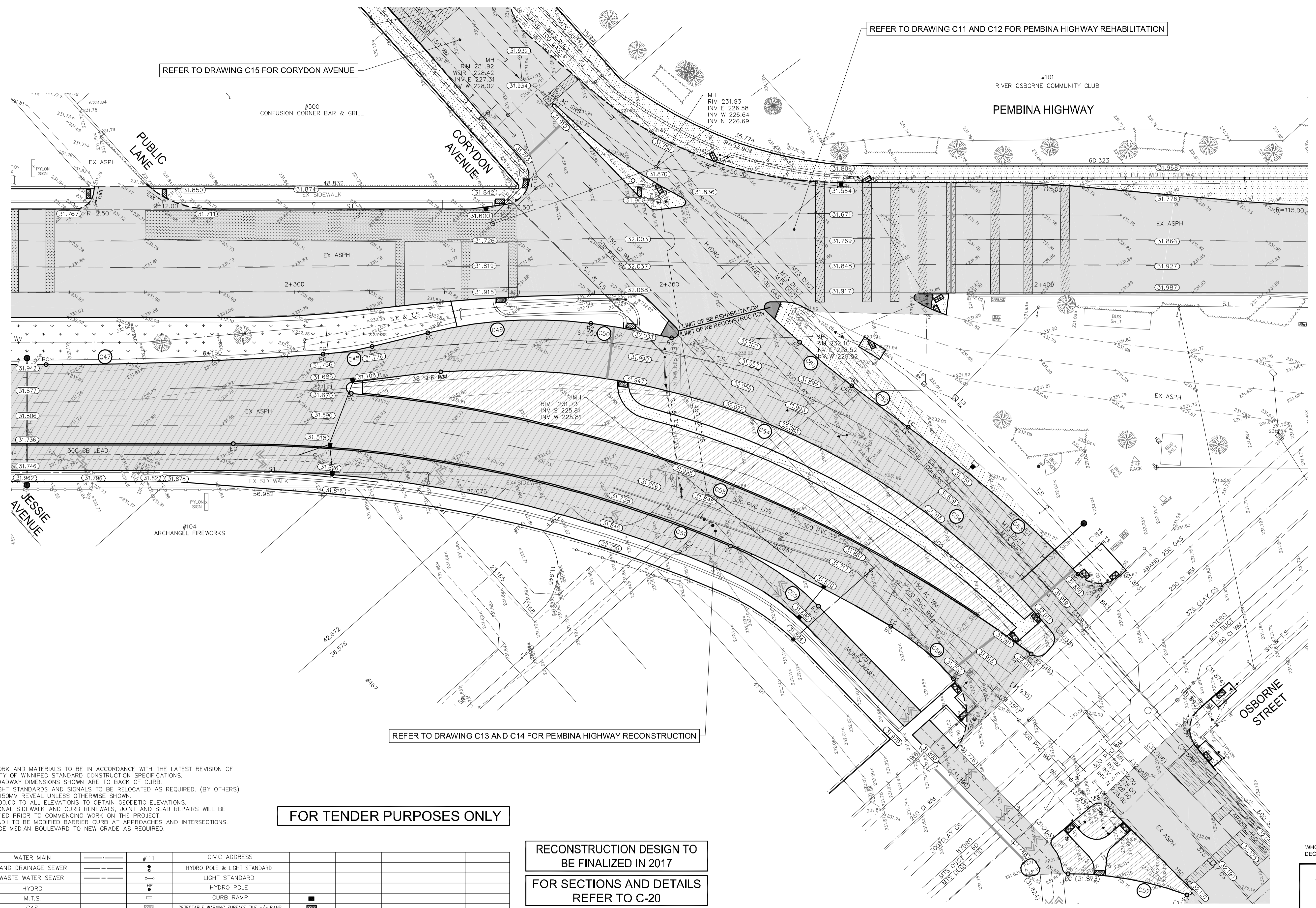


May 16, 2016 - 10:52am  
 P:\3516001-5916009-5916006 - Pembina Hwy Pavement Rehab. & Bike Lane\MM\Drawings\Construction Drawings\5916006 C17 Confusion Corner Plan Issued for Tender 20160516.dwg - Tab: STA. 2+320.08 - STA. 2+470.00



REFER TO DRAWING C15 FOR CORYDON AVENUE

REFER TO DRAWING C11 AND C12 FOR PEMBINA HIGHWAY REHABILITATION

REFER TO DRAWING C13 AND C14 FOR PEMBINA HIGHWAY RECONSTRUCTION

FOR TENDER PURPOSES ONLY

RECONSTRUCTION DESIGN TO BE FINALIZED IN 2017

FOR SECTIONS AND DETAILS REFER TO C-20

- NOTES:**
1. ALL WORK AND MATERIALS TO BE IN ACCORDANCE WITH THE LATEST REVISION OF THE CITY OF WINNIPEG STANDARD CONSTRUCTION SPECIFICATIONS.
  2. ALL ROADWAY DIMENSIONS SHOWN ARE TO BACK OF CURB.
  3. ALL LIGHT STANDARDS AND SIGNALS TO BE RELOCATED AS REQUIRED. (BY OTHERS)
  4. CURB 150MM REVEAL UNLESS OTHERWISE SHOWN.
  5. ADD 200.00 TO ALL ELEVATIONS TO OBTAIN GEODETIC ELEVATIONS.
  6. ADDITIONAL SIDEWALK AND CURB RENEWALS, JOINT AND SLAB REPAIRS WILL BE IDENTIFIED PRIOR TO COMMENCING WORK ON THE PROJECT.
  7. ALL RADII TO BE MODIFIED BARRIER CURB AT APPROACHES AND INTERSECTIONS.
  8. REGRADE MEDIAN BOULEVARD TO NEW GRADE AS REQUIRED.

EXISTING	LEGEND-PLAN	PROPOSED	EXISTING	LEGEND-PLAN	PROPOSED	EXISTING	LEGEND-PROFILE	PROPOSED
---	WATER MAIN	---	#111	CIVIC ADDRESS	---	---	---	---
---	LAND DRAINAGE SEWER	---	●	HYDRO POLE & LIGHT STANDARD	---	---	---	---
---	WASTE WATER SEWER	---	○	LIGHT STANDARD	---	---	---	---
---	HYDRO	---	HP	HYDRO POLE	---	---	---	---
---	M.T.S.	---	□	CURB RAMP	---	---	---	---
---	GAS	---	■	DETECTABLE WARNING SURFACE TILE c/w RAMP	---	---	---	---
---	SIGNALS	---	---	EDGE OF SIDEWALK	---	---	---	---
○	MANHOLE	●	---	PROPERTY LINE	---	---	---	---
□	CATCH BASIN	■	---	EDGE OF ASPHALT	---	---	---	---
△	CURB INLET	▽	---	MODIFIED BARRIER CURB	---	---	---	---
---	UTILITIES ADJUSTED	△ □ ○	---	BARRIER CURB	---	---	---	---
J	PLUG	J	---	BARRIER CURB WITH SPLASH STRIP	---	---	---	---
⊕	HYDRANT	⊕	---	TRAFFIC SIGNAL	---	---	---	---
⊕	VALVE	⊕	---	SIDEWALK	---	---	---	---
⊕	CURB STOP	⊕	---	CONCRETE SLAB REPAIR	---	---	---	---
230.99	GROUND GRADE	---	---	ASPHALT	---	---	---	---
---	PAVEMENT GRADE	(31.000)	---	CONCRETE	---	---	---	---
---	LOT GRADE	[31.000]	---	INTERLOCKING PAVING STONES	---	---	---	---
---	ANCHOR	---	---	BULLNOSE	---	---	---	---
---	EXISTING	---	---	---	---	---	---	---

**LOCATIONS APPROVED UNDERGROUND STRUCTURES**

SIGNED BY: \_\_\_\_\_ DATE: \_\_\_\_\_

SUP/UG STRUCTURES

LOCATION OF UNDERGROUND STRUCTURES AS SHOWN ARE BASED ON THE BEST INFORMATION AVAILABLE BUT NO GUARANTEE IS GIVEN THAT ALL EXISTING UTILITIES ARE SHOWN OR THAT THE GIVEN LOCATIONS ARE EXACT CONFIRMATION OF EXISTENCE AND EXACT LOCATION OF ALL SERVICES MUST BE OBTAINED FROM THE INDIVIDUAL UTILITIES BEFORE PROCEEDING

NO.	REVISIONS	DATE	BY
3	ISSUED FOR TENDER	16.MAY.16	VM
2	ISSUED TO UNDERGROUND STRUCTURES	16.MAY.16	VM
1	ISSUED FOR CLIENT REVIEW	28.APR.16	VM

**MMM GROUP**

DESIGNED BY: SQ/JP  
 CHECKED BY: VM/TP  
 DRAWN BY: HK/LT  
 APPROVED BY: VM

HOR SCALE: 1:250  
 VERTICAL: 1:10

DATE: MARCH 2016

ENGINEER'S SEAL

PROVINCE OF MANITOBA

V.M. MAROTI  
 Member  
 30809

REGISTERED PROFESSIONAL ENGINEER

**THE CITY OF WINNIPEG**  
 PUBLIC WORKS DEPARTMENT  
 ENGINEERING DIVISION

**PEMBINA HIGHWAY**  
 FROM CARTER AVENUE TO OSBORNE STREET

PAVEMENT REHABILITATION  
 INTERSECTION OF PEMBINA HIGHWAY AND CORYDON AVENUE

CITY DRAWING NUMBER: SHEET 17 OF 27

BID NO. 386-2016

**METRIC**

WHOLE NUMBERS INDICATE MILLIMETRES  
 DECIMALIZED NUMBERS INDICATE METRES

**APEGM**

Certificate of Authorization  
 MMM Group Limited  
 No. 4531