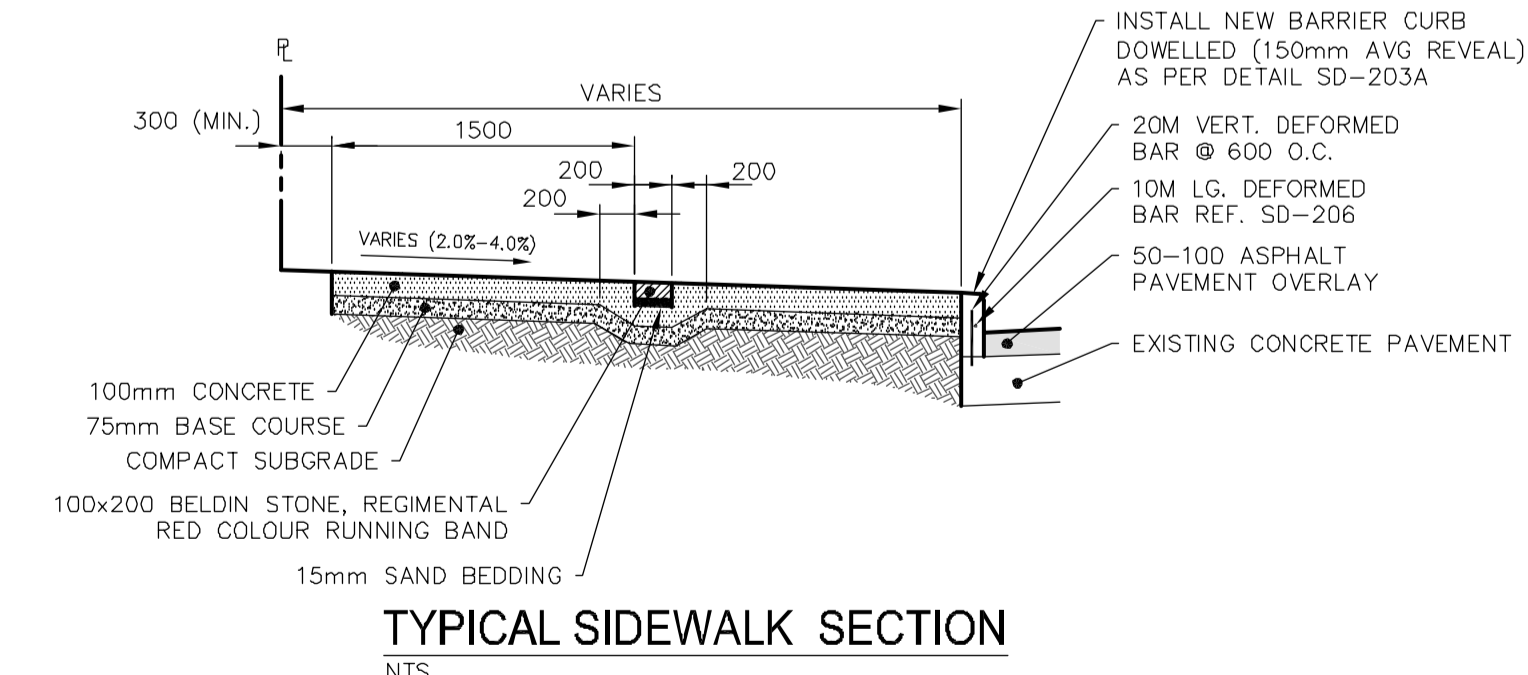
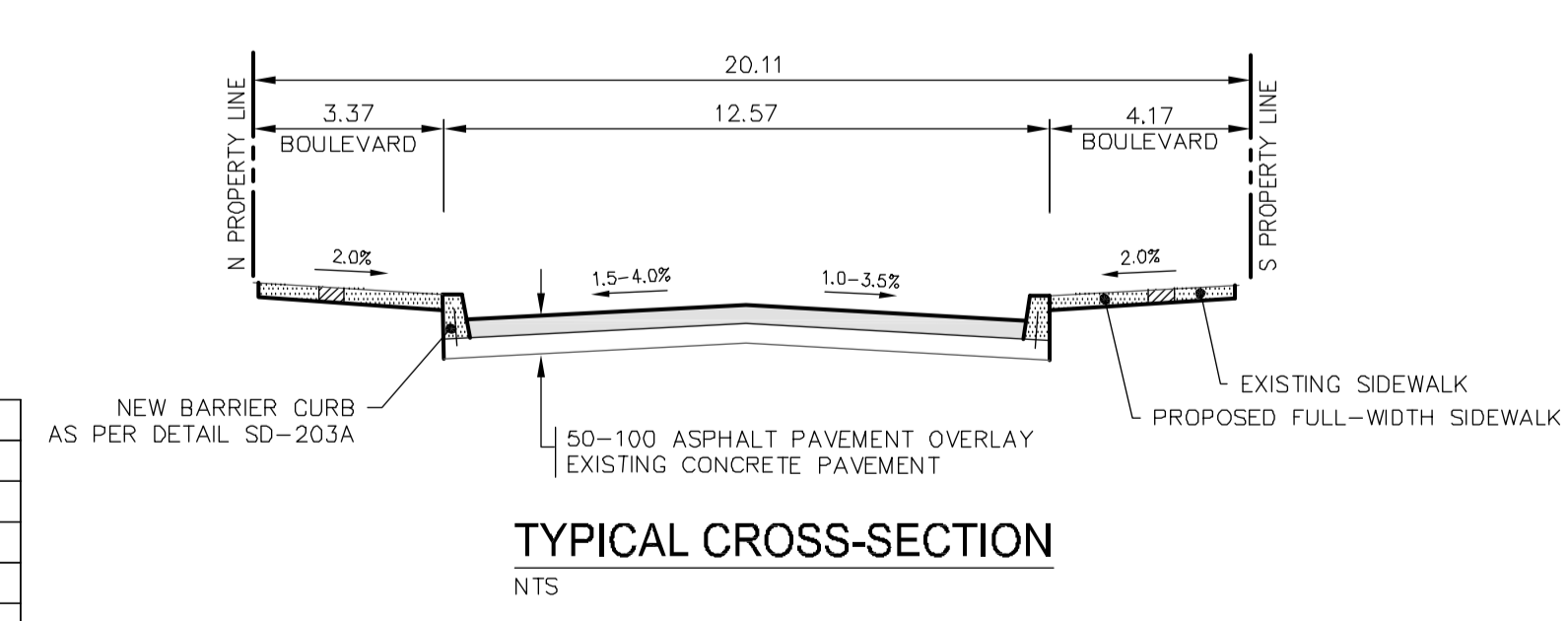


- NOTES:**
1. ALL WORK AND MATERIALS TO BE IN ACCORDANCE WITH THE LATEST REVISION OF THE CITY OF WINNIPEG STANDARD CONSTRUCTION SPECIFICATIONS.
  2. ALL ROADWAY DIMENSIONS SHOWN ARE TO BACK OF CURB.
  3. ALL LIGHT STANDARDS AND SIGNALS TO BE RELOCATED OR REMOVED AS REQUIRED. (BY OTHERS)
  4. CURB 150MM REVEAL UNLESS OTHERWISE SHOWN.
  5. ADD 200.00 TO ALL ELEVATIONS TO OBTAIN GEODETIC ELEVATIONS.
  6. ADDITIONAL SIDEWALK AND CURB RENEWALS, JOINT AND SLAB REPAIRS WILL BE IDENTIFIED PRIOR TO COMMENCING WORK ON THE PROJECT.
  7. ALL RADII TO BE MODIFIED BARRIER CURB AT APPROACHES AND INTERSECTIONS.

FOR SECTIONS AND DETAILS REFER TO C-20



EXISTING	LEGEND-PLAN	PROPOSED	EXISTING	LEGEND-PLAN	PROPOSED	EXISTING	LEGEND-PROFILE	PROPOSED
---	WATER MAIN	---	#111	CIVIC ADDRESS				
---	LAND DRAINAGE SEWER	---	●	HYDRO POLE & LIGHT STANDARD				
---	WASTE WATER SEWER	---	○	LIGHT STANDARD				
---	HYDRO	---	HP	HYDRO POLE				
---	M.T.S.	---	□	CURB RAMP				
---	GAS	---	■	DETECTABLE WARNING SURFACE TILE c/w RAMP				
---	SIGNALS	---	□	EDGE OF SIDEWALK				
○	MANHOLE	●	---	PROPERTY LINE				
□	CATCH BASIN	■	---	EDGE OF ASPHALT				
△	CURB INLET	▽	---	MODIFIED BARRIER CURB				
U	UTILITIES ADJUSTED	△	○	BARRIER CURB				
+	PLUG	+	---	EDGE OF CONCRETE				
◇	HYDRANT	◆	---	SIDEWALK				
◇	VALVE	◇	---	CONCRETE SLAB REPAIR				
+	CURB STOP	+	---	ASPHALT				
---	GROUND GRADE	---	---	MILLED SURFACE				
---	PAVEMENT GRADE	---	---	BULLNOSE				
---	LOT GRADE	---	---					
---	ANCHOR	---	---					
---	EXISTING	---	---					

**LOCATIONS APPROVED UNDERGROUND STRUCTURES**

SIGNED BY: \_\_\_\_\_ DATE: \_\_\_\_\_

LOCATION OF UNDERGROUND STRUCTURES AS SHOWN ARE BASED ON THE BEST INFORMATION AVAILABLE BUT NO GUARANTEE IS GIVEN THAT ALL EXISTING UTILITIES ARE SHOWN OR THAT THE GIVEN LOCATIONS ARE EXACT CONFIRMATION OF EXISTENCE AND EXACT LOCATION OF ALL SERVICES MUST BE OBTAINED FROM THE INDIVIDUAL UTILITIES BEFORE PROCEEDING

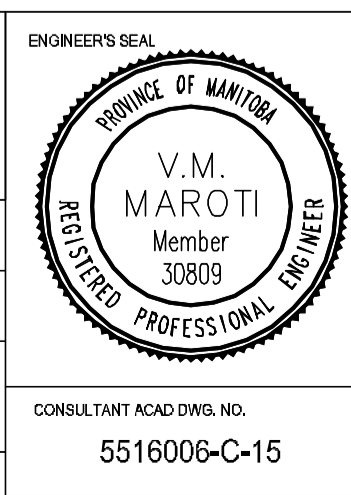
**MMM GROUP**

DESIGNED BY: SQ  
DRAWN BY: HK

CHECKED BY: VM/TP  
APPROVED BY: VM

ISSUED FOR TENDER: 16.MAY.16 VM  
ISSUED TO UNDERGROUND STRUCTURES: 16.MAY.16 VM  
ISSUED FOR CLIENT REVIEW: 28.APR.16 VM

NO. REVISIONS: \_\_\_\_\_ DATE: \_\_\_\_\_ BY: \_\_\_\_\_



**THE CITY OF WINNIPEG**  
PUBLIC WORKS DEPARTMENT  
ENGINEERING DIVISION

**CORYDON AVENUE**  
FROM NASSAU AVENUE NORTH TO PEMBINA HIGHWAY

PAVEMENT REHABILITATION  
STA. 0+85 - STA. 2+30

BID NO. 386-2016

SHEET 15 OF 27

**METRIC**  
WHOLE NUMBERS INDICATE MILLIMETRES  
DECIMALIZED NUMBERS INDICATE METRES

**APEGM**  
Certificate of Authorization  
MMM Group Limited  
No. 4531

May 16, 2016 - 10:48am  
 P:\2016\01-501099\501099\CAD\Drawings\Construction Drawings\501099\C15-C16 Corydon Plan Profiles Issued for Tender\_20160516.dwg - Tab:1