

EXISTING	LEGEND-PLAN	PROPOSED	EXISTING	LEGEND-PLAN	PROPOSED	EXISTING	LEGEND-PROFILE	PROPOSED
---	WATER MAIN	---	#111	CIVIC ADDRESS	---	---	---	---
---	LAND DRAINAGE SEWER	---	●	HYDRO POLE & LIGHT STANDARD	---	---	---	---
---	WASTE WATER SEWER	---	○	LIGHT STANDARD	---	---	---	---
---	HYDRO	---	HP	HYDRO POLE	---	---	---	---
---	M.T.S.	---	□	CURB RAMP	---	---	---	---
---	GAS	---	▨	DETECTABLE WARNING SURFACE TILE c/w RAMP	---	---	---	---
---	SIGNALS	---	●	EDGE OF SIDEWALK	---	---	---	---
○	MANHOLE	●	---	PROPERTY LINE	---	---	---	---
□	CATCH BASIN	■	---	EDGE OF ASPHALT	---	---	---	---
△	CURB INLET	▽	---	MODIFIED BARRIER CURB	---	---	---	---
⌋	UTILITIES ADJUSTED	△ □ ○	---	BARRIER CURB	---	---	---	---
⌋	PLUG	⌋	---	BARRIER CURB WITH SPLASH STRIP	---	---	---	---
⊕	HYDRANT	⊕	---	TRAFFIC SIGNAL	---	---	---	---
⊕	VALVE	⊕	---	SIDEWALK	---	---	---	---
⊕	CURB STOP	⊕	---	CONCRETE SLAB REPAIR	---	---	---	---
---	GROUND GRADE	---	---	ASPHALT	---	---	---	---
---	PAVEMENT GRADE	(31.000)	---	CONCRETE	---	---	---	---
---	LOT GRADE	[31.000]	---	INTERLOCKING PAVING STONES	---	---	---	---
---	ANCHOR	---	---	BULLNOSE	---	---	---	---
---	EXISTING	---	---	LEGEND-PLAN	---	---	---	---

FOR SECTIONS AND DETAILS REFER TO C-20

FOR TENDER PURPOSES ONLY

NOTE: These design documents are prepared solely for the use by the party with whom the design professional has entered into a contract and there are no representations of any kind made by the design professional to any party with whom the design professional has not entered into a contract.

LOCATIONS APPROVED UNDERGROUND STRUCTURES

SIGNED BY:	DATE:

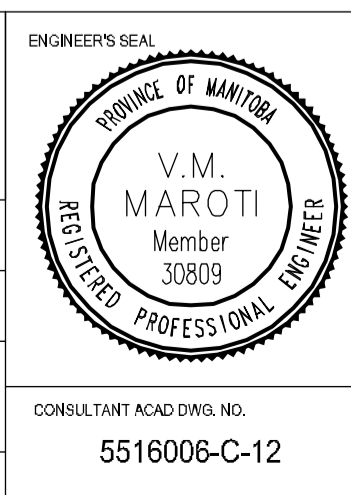
LOCATION OF UNDERGROUND STRUCTURES AS SHOWN ARE BASED ON THE BEST INFORMATION AVAILABLE BUT NO GUARANTEE IS GIVEN THAT ALL EXISTING UTILITIES ARE SHOWN OR THAT THE GIVEN LOCATIONS ARE EXACT CONFIRMATION OF EXISTANCE AND EXACT LOCATION OF ALL SERVICES MUST BE OBTAINED FROM THE INDIVIDUAL UTILITIES BEFORE PROCEEDING

NO.	REVISIONS	DATE	BY
3	ISSUED FOR TENDER	16.MAY.16	VM
2	ISSUED TO UNDERGROUND STRUCTURES	16.MAY.16	VM
1	ISSUED FOR CLIENT REVIEW	28.APR.16	VM

- NOTES:**
- ALL WORK AND MATERIALS TO BE IN ACCORDANCE WITH THE LATEST REVISION OF THE CITY OF WINNIPEG STANDARD CONSTRUCTION SPECIFICATIONS.
 - ALL ROADWAY DIMENSIONS SHOWN ARE TO BACK OF CURB.
 - ALL LIGHT STANDARDS AND SIGNALS TO BE RELOCATED OR REMOVED AS REQUIRED. (BY OTHERS)
 - CURB 150MM REVEAL UNLESS OTHERWISE SHOWN.
 - ADD 200.00 TO ALL ELEVATIONS TO OBTAIN GEODETIC ELEVATIONS.
 - ADDITIONAL SIDEWALK AND CURB RENEWALS, JOINT AND SLAB REPAIRS WILL BE IDENTIFIED PRIOR TO COMMENCING WORK ON THE PROJECT.
 - ALL RADII TO BE MODIFIED BARRIER CURB AT APPROACHES AND INTERSECTIONS.
 - REGRADE MEDIAN BOULEVARD TO NEW GRADE AS REQUIRED.

METRIC
WHOLE NUMBERS INDICATE MILLIMETRES
DECIMALIZED NUMBERS INDICATE METRES

APEGM
Certificate of Authorization
MMM Group Limited
No. 4531



THE CITY OF WINNIPEG
PUBLIC WORKS DEPARTMENT
ENGINEERING DIVISION

PEMBINA HIGHWAY
FROM CARTER AVENUE TO OSBORNE STREET

PAVEMENT REHABILITATION
SOUTHBOUND STA. 2+444 - STA. 2+582

CITY DRAWING NUMBER: SHEET 12 OF 27
BID NO. 386-2016

May 16, 2016 - 10:35am - Pembina Hwy Pavement Rehab & Bike Lane\MMW Drawings\Construction Drawings\5916006 C01-C12 Rehabilitation issued for Tender 20160516.dwg - tab:STA. 2+470.00 - STA. 2+613.54