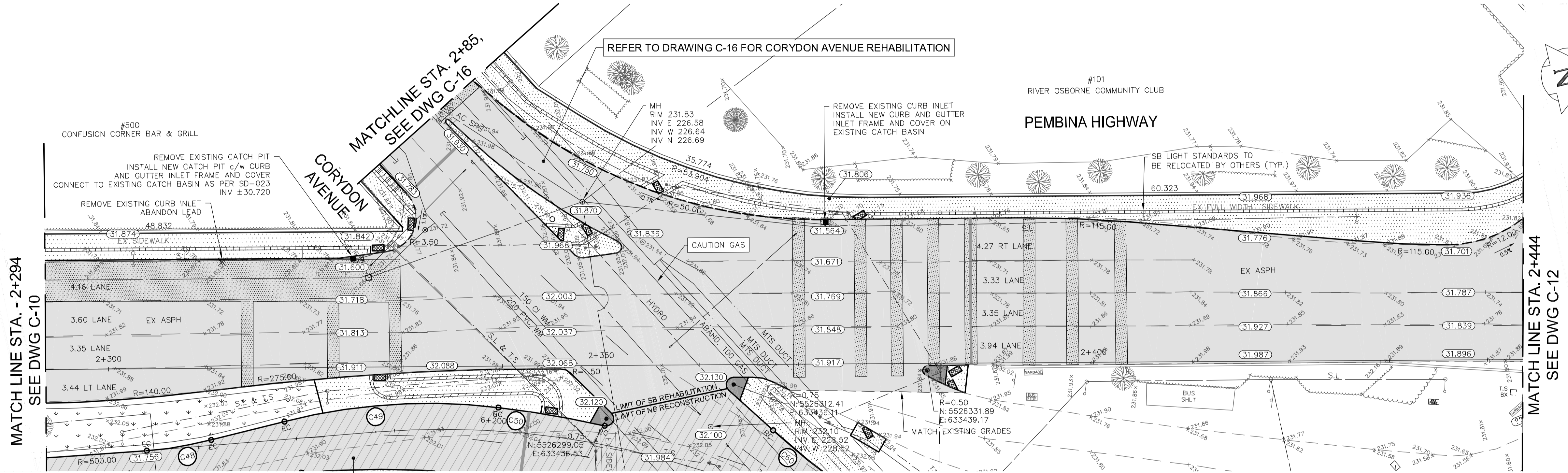


PEMBINA HIGHWAY SOUTHBOUND PROFILE

Curve #	Length
C48	9'31"12"
	40.000
	3.33
	6.65
BC	5526252.871
	633429.093
EC	5526259.496
	633429.523
C49	20'54"49"
	60.000
	11.07
	21.90
BC	5526288.633
	633432.943
EC	5526267.146
	633429.383
C50	6'03"48"
	103.500
	5.48
	10.95
BC	5526298.718
	633437.202
EC	5526288.633
	633432.943
C60	5'10"45"
	100.000
	4.52
	9.04
BC	5526315.261
	633441.526
EC	5526320.748
	633448.705



MATCH LINE STA. - 2+294
SEE DWG C-10

MATCH LINE STA. 2+444
SEE DWG C-12

EXISTING	LEGEND-PLAN	PROPOSED	EXISTING	LEGEND-PLAN	PROPOSED	EXISTING	LEGEND-PROFILE	PROPOSED
---	WATER MAIN	---	#111	CIVIC ADDRESS	---	---	---	---
---	LAND DRAINAGE SEWER	---	●	HYDRO POLE & LIGHT STANDARD	---	---	---	---
---	WASTE WATER SEWER	---	○	LIGHT STANDARD	---	---	---	---
---	HYDRO	---	HP	HYDRO POLE	---	---	---	---
---	M.T.S.	---	□	CURB RAMP	---	---	---	---
---	GAS	---	■	DETECTABLE WARNING SURFACE TILE c/w RAMP	---	---	---	---
---	SIGNALS	---	---	EDGE OF SIDEWALK	---	---	---	---
○	MANHOLE	●	---	PROPERTY LINE	---	---	---	---
□	CATCH BASIN	■	---	EDGE OF ASPHALT	---	---	---	---
△	CURB INLET	▽	---	MODIFIED BARRIER CURB	---	---	---	---
⌋	UTILITIES ADJUSTED	△ □ ○	---	BARRIER CURB	---	---	---	---
⌋	PLUG	⌋	---	BARRIER CURB WITH SPLASH STRIP	---	---	---	---
⊕	HYDRANT	⊕	---	TRAFFIC SIGNAL	---	---	---	---
⊕	VALVE	⊕	---	SIDEWALK	---	---	---	---
⊕	CURB STOP	⊕	---	CONCRETE SLAB REPAIR	---	---	---	---
---	GROUND GRADE	---	---	ASPHALT	---	---	---	---
---	PAVEMENT GRADE	---	---	CONCRETE	---	---	---	---
---	LOT GRADE	---	---	INTERLOCKING PAVING STONES	---	---	---	---
---	ANCHOR	---	---	BULLNOSE	---	---	---	---
---	EXISTING	---	---	LEGEND-PLAN	---	---	---	---

FOR SECTIONS AND DETAILS
REFER TO C-20

FOR TENDER PURPOSES ONLY

NOTES:
These design documents are prepared solely for the use by the party with whom the design professional has entered into a contract and there are no representations of any kind made by the design professional to any party with whom the design professional has not entered into a contract.

SIGNED BY:	DATE:
---	---
---	---

LOCATIONS APPROVED
UNDERGROUND STRUCTURES

G.R.M. ELEV.	BENCHMARK LOCATION	DATE	BY
232.929	LOCATED ON "O" OF OPEN ON HYDRANT, SOUTHEAST CORNER OF PEMBINA HIGHWAY AND DALY STREET NORTH	---	---

MMM GROUP

MMM Group Limited
Suite 111 - 93 Lombard Ave
Winnipeg, MB R3B 3B1
T. 204.943.3178
F. 204.943.4948
www.mmmgrouplimited.com

DESIGNED BY: SQ/JP
DRAWN BY: HK/LT
CHECKED BY: VM/TP
APPROVED BY: VM

3 ISSUED FOR TENDER 16.MAY.16 VM
2 ISSUED TO UNDERGROUND STRUCTURES 16.MAY.16 VM
1 ISSUED FOR CLIENT REVIEW 28.APR.16 VM

HOR SCALE: 1:250
VERTICAL: 1:10

DATE: MARCH 2016

PROVINCE OF MANITOBA
REGISTERED PROFESSIONAL ENGINEER
V.M. MAROTI
Member 30809

CONSULTANT A/CAD DWG. NO.
5516006-C-11

THE CITY OF WINNIPEG
PUBLIC WORKS DEPARTMENT
ENGINEERING DIVISION

PEMBINA HIGHWAY
FROM CARTER AVENUE TO OSBORNE STREET

PAVEMENT REHABILITATION
SOUTHBOUND STA. 2+294 - STA. 2+444

CITY DRAWINGS NUMBER
SHEET 11 OF 27

BID NO.
386-2016

METRIC
WHOLE NUMBERS INDICATE MILLIMETRES
DECIMALIZED NUMBERS INDICATE METRES

APEGM
Certificate of Authorization
MMM Group Limited
No. 4531

May 16, 2016 - 10:32am
 P:\5516006-5516006- Pembina Hwy Pavement Rehab. & Bike Lane\MMW Drawings\Construction Drawings\5516006 C01-C12 Rehabilitation issued for Tender 20160516.dwg - tab: STA. 2+320.08 - STA. 2+470.00