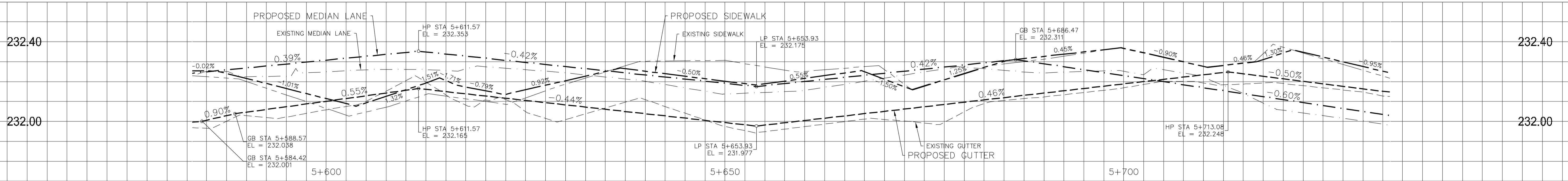
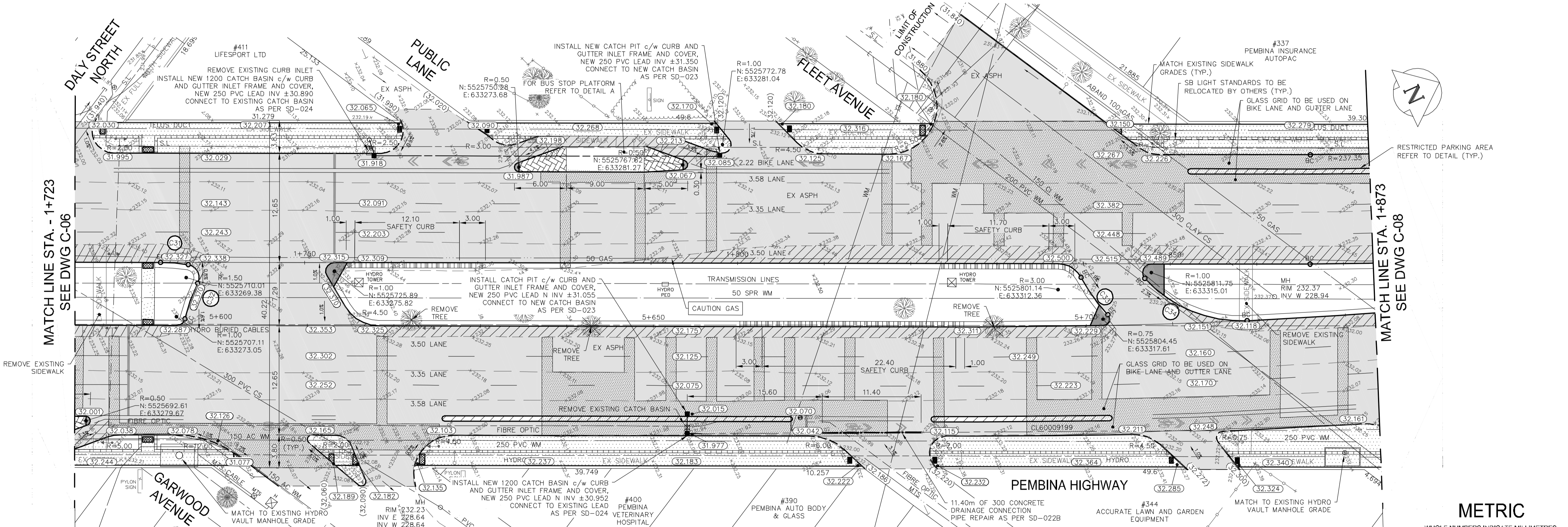


PEMBINA HIGHWAY SOUTHBOUND PROFILE



PEMBINA HIGHWAY NORTHBOUND PROFILE

Curve Table	
Curve #	Length
C31	Δ RT L
	BC
	EC
C32	Δ RT L
	BC
	EC
C33	Δ RT L
	BC
	EC
C34	Δ RT L
	BC
	EC



FOR SECTIONS AND DETAILS REFER TO C-20

FOR TENDER PURPOSES ONLY

NOTE: These design documents are prepared solely for the use by the party with whom the design professional has entered into a contract and there are no representations of any kind made by the design professional to any party with whom the design professional has not entered into a contract.

LOCATIONS APPROVED UNDERGROUND STRUCTURES

SIGNED BY:	DATE:

LOCATION OF UNDERGROUND STRUCTURES AS SHOWN ARE BASED ON THE BEST INFORMATION AVAILABLE BUT NO GUARANTEE IS GIVEN THAT ALL EXISTING UTILITIES ARE SHOWN OR THAT THE GIVEN LOCATIONS ARE EXACT CONFIRMATION OF EXISTANCE AND EXACT LOCATION OF ALL SERVICES MUST BE OBTAINED FROM THE INDIVIDUAL UTILITIES BEFORE PROCEEDING

G.R.M. ELEV.	BENCHMARK LOCATION	DATE	BY
232.929	LOCATED ON "O" OF OPEN ON HYDRANT, SOUTHEAST CORNER OF PEMBINA HIGHWAY AND DALY STREET NORTH		

MMM GROUP

DESIGNED BY: SQ/JP
 CHECKED BY: VM/TP
 DRAWN BY: HK/LT
 APPROVED BY: VM

ISSUED FOR TENDER: 16.MAY.16 VM
 ISSUED TO UNDERGROUND STRUCTURES: 16.MAY.16 VM
 ISSUED FOR CLIENT REVIEW: 28.APR.16 VM

NO. REVISIONS: 1
 DATE: MARCH 2016

PROVINCE OF MANITOBA
V.M. MAROTI
 MEMBER 30809
 REGISTERED PROFESSIONAL ENGINEER

THE CITY OF WINNIPEG
 PUBLIC WORKS DEPARTMENT
 ENGINEERING DIVISION

PEMBINA HIGHWAY
 FROM CARTER AVENUE TO OSBORNE STREET

PAVEMENT REHABILITATION
 SOUTHBOUND STA. 1+723 - STA. 1+873

CITY DRAWING NUMBER: SHEET 07 OF 27
 BID NO. 386-2016

METRIC
 WHOLE NUMBERS INDICATE MILLIMETRES
 DECIMALIZED NUMBERS INDICATE METRES

APEGM
 Certificate of Authorization
 MMM Group Limited
 No. 4531

May 16, 2016 - 10:01am
 P:\3516001-5010000-5010000 - Pembina Hwy Pavement Rehab. & Bike Lane\MM\Drawings\Construction Drawings\5010000 C01-C12 Rehabilitation issued for Tender 20160516.dwg - tab:STA. 1+750.00 - STA. 1+900.00