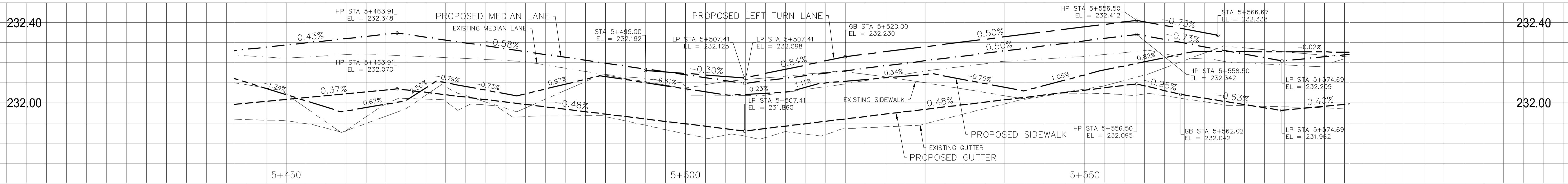
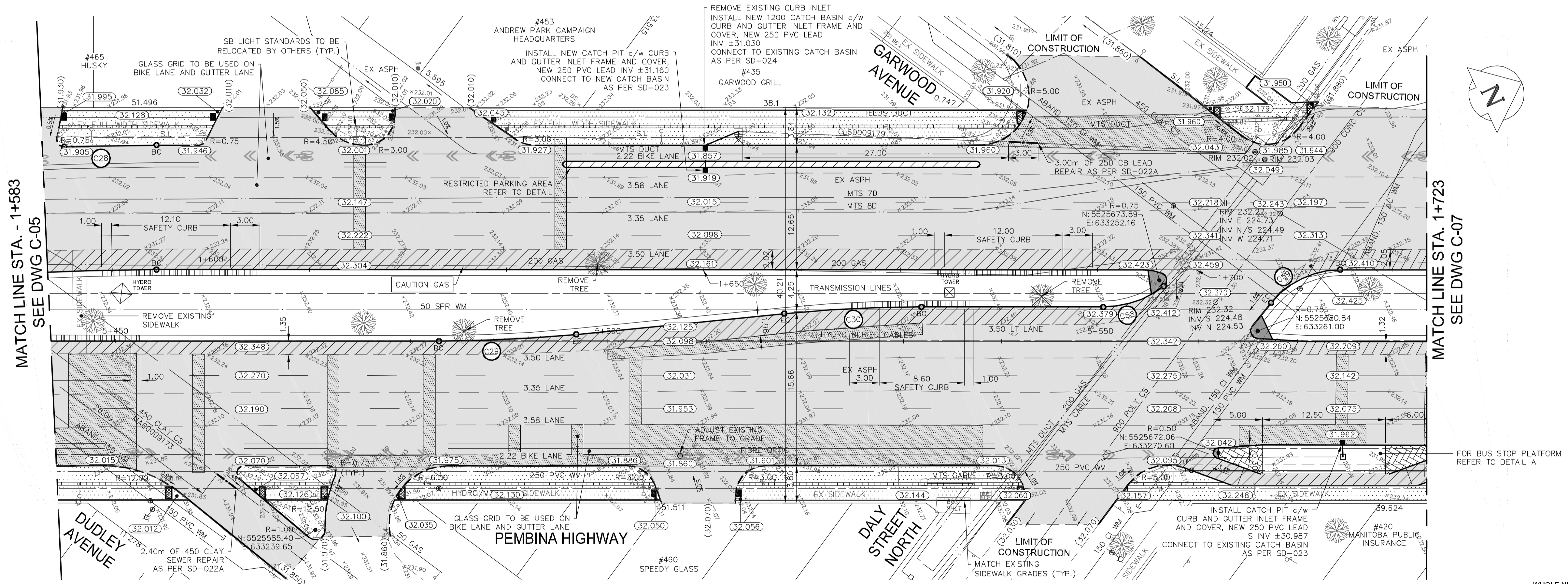


PEMBINA HIGHWAY SOUTHBOUND PROFILE



PEMBINA HIGHWAY NORTHBOUND PROFILE

Curve Table		
Curve #	Length	
C28	ARTL	2'02"27"
	BC	282.650
	EC	4.68
C29	ARTL	5'42"33"
	BC	140.000
	EC	6.98
C30	ARTL	37'58"52"
	BC	10.000
	EC	3.44
C58	ARTL	51'09"28"
	BC	9.000
	EC	4.31
C59	ARTL	5'10"28"
	BC	9.000
	EC	4.31



FOR SECTIONS AND DETAILS REFER TO C-20

FOR TENDER PURPOSES ONLY

NOTE: These design documents are prepared solely for the use by the party with whom the design professional has entered into a contract and there are no representations of any kind made by the design professional to any party with whom the design professional has not entered into a contract.

LOCATIONS APPROVED UNDERGROUND STRUCTURES

ISSUED BY: DATE: SUP/UV STRUCTURES

LOCATION OF UNDERGROUND STRUCTURES AS SHOWN ARE BASED ON THE BEST INFORMATION AVAILABLE BUT NO GUARANTEE IS GIVEN THAT ALL EXISTING UTILITIES ARE SHOWN OR THAT THE GIVEN LOCATIONS ARE EXACT CONFIRMATION OF EXISTENCE AND EXACT LOCATION OF ALL SERVICES MUST BE OBTAINED FROM THE INDIVIDUAL UTILITIES BEFORE PROCEEDING

NO.	ISSUED FOR TENDER	DATE	BY
3	ISSUED FOR TENDER	16.MAY.16	VM
2	ISSUED TO UNDERGROUND STRUCTURES	16.MAY.16	VM
1	ISSUED FOR CLIENT REVIEW	28.APR.16	VM

**MMM GROUP**  
 DESIGNED BY: SQ/JP  
 DRAWN BY: HK/LT  
 CHECKED BY: VM/TP  
 APPROVED BY: VM  
 HORIZ SCALE: 1:250  
 VERTICAL SCALE: 1:10  
 RELEASED FOR CONSTRUCTION: MARCH 2016

MMM Group Limited  
 Suite 111 - 93 Lombard Ave  
 Winnipeg, MB R3B 3B1  
 T. 204.943.3178  
 F. 204.943.4948  
 www.mmmgroup.com

PROVINCE OF MANITOBA  
**V.M. MAROTI**  
 REGISTERED PROFESSIONAL ENGINEER  
 MEMBER 30809

**THE CITY OF WINNIPEG**  
 PUBLIC WORKS DEPARTMENT  
 ENGINEERING DIVISION

**PEMBINA HIGHWAY**  
 FROM CARTER AVENUE TO OSBORNE STREET  
 PAVEMENT REHABILITATION  
 SOUTHBOUND STA. 1+583 - STA. 1+723

**METRIC**  
 WHOLE NUMBERS INDICATE MILLIMETRES  
 DECIMALIZED NUMBERS INDICATE METRES

**APEGM**  
 Certificate of Authorization  
 MMM Group Limited  
 No. 4531

May 16, 2016 - 10:01am  
 P:\3216001-5010295-5010295\Drawings\Construction\Drawings\5010295\5010295-101-C-20 Rehabilitation Issued for Tender - 20160516.dwg - tab:STA. 1+610.00 - STA. 1+750.00